

FCC Statement
This device complies with part 15 of the FCC rules. Operation is subject to the following two conditions: (1) this device may not cause harmful interference, and (2) this device must accept any interference received, including interference that may cause undesired operation.
Changes or modifications not expressly approved by the party responsible for compliance could void the user's authority to operate the equipment.
NOTE: This equipment has been tested and found to comply with the limits for a Class B digital device, pursuant to part 15 of the FCC Rules. These limits are designed to provide reasonable protection against harmful interference in a residential installation. This equipment generates uses and can radiate radio frequency energy and, if not installed and used in accordance with the instructions, may cause harmful interference to radio communications. However, there is no guarantee that interference will not occur in a particular installation. If this equipment does cause harmful interference to radio or television reception, which can be determined by turning the equipment off and on, the user is encouraged to try to correct the interference by one or more of the following measures:

- Reorient or relocate the receiving antenna.
- Increase the separation between the equipment and receiver.
- Connect the equipment into an outlet on a circuit different from that to which the receiver is connected.
- Consult the dealer or an experienced radio/TV technician for help.

The device has been evaluated to meet general RF exposure requirement. The device can be used in portable exposure condition without restriction.

WARNING:

1. Adult supervision required.
2. Do not attempt to modify the remote control in any way.
3. All the packaging material must be removed by an adult.

CAUTION:

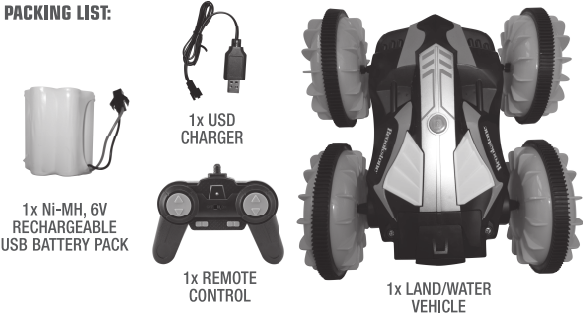
1. Do not mix old and new batteries.
2. The supply terminals are not to be short-circuited.
3. Non-rechargeable batteries are not to be charged.
4. Always remove weak or used or dead batteries from the product.
5. Do not dispose of batteries in fire, batteries may explode or leak.
6. Rechargeable batteries are to be removed from the toy before being charged.
7. Rechargeable batteries are only to be charged under adult supervision.
8. Only batteries of the same or equivalent type as recommended are to be used.
9. Do not mix Alkaline, standard (carbon-zinc), or rechargeable batteries.
10. The toy must be fully assembled in accordance with the instructions before operating.
11. Be sure to insert the batteries correctly and always follow the toy and battery manufacturers' instructions.

LAND/WATER

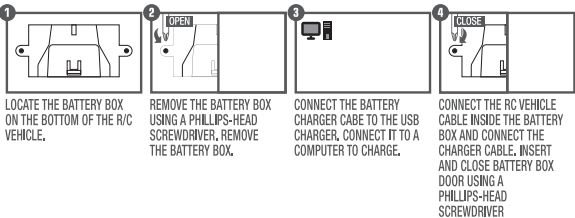
HIGH SPEED, AMPHIBIOUS STUNT R/C VEHICLE
INSTRUCTION BOOKLET

8+

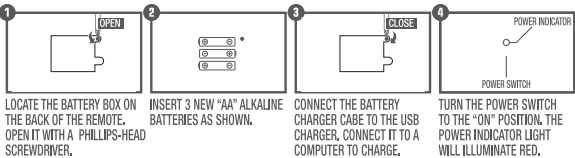
PACKING LIST:



BATTERY INSTRUCTIONS: NI-MH RECHARGEABLE USB BATTERY PACK



BATTERY INSTRUCTIONS: REMOTE CONTROL



PLAY INSTRUCTIONS:



DRAINAGE HOLE
VEHICLE WILL FILL UP WITH WATER AFTER USE IN WATER. REMOVE ACCESS WATER THROUGH THE DRAINAGE HOLE AFTER USE OF VEHICLE IN WATER, SO THAT VEHICLE CAN RE-GAIN PROPER FUNCTIONALITY & MOBILITY. THE DRAINAGE HOLE CAN BE FOUND ON THE BOTTOM OF THE VEHICLE.

FORWARD

BACKWARD

**STUNT FLIP
180°**

FORWARD

TURN LEFT

TURN RIGHT