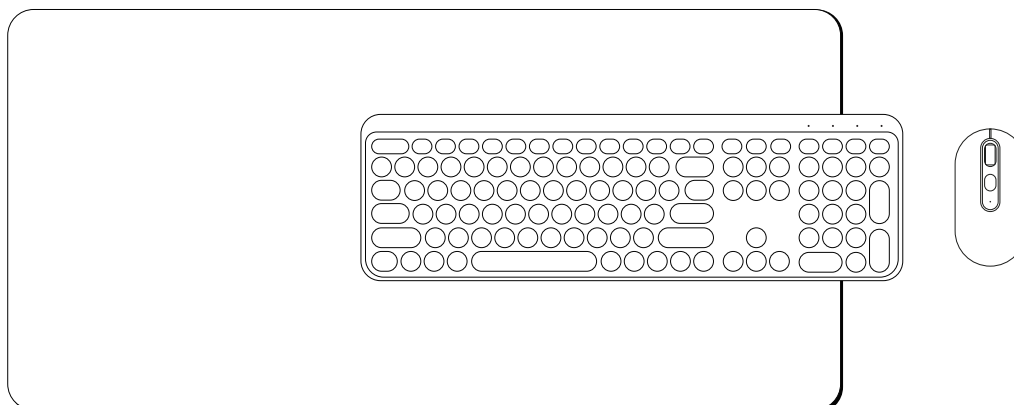


User's Manual

Version 1



Model #: 9SP135A--BL/IXQ017A-WM/J7Q003A-WM/O7Q006A-WM

Product Specifications

Includes: 1pc 2.4G keyboard, 1pc 2.4G mouse, 1pc mouse pad

Power supply: Keyboard: 2 AAA batteries(not included), Mouse: 1 AA battery(not included)

Basic information

Button working current: Max 6mA

Sleep mode: 10 minutes after no action

Wake up: Push to wake up

Sleep current: <0.1mA

Applicable equipment/system: Windows/7/8/10

Installation & Connection

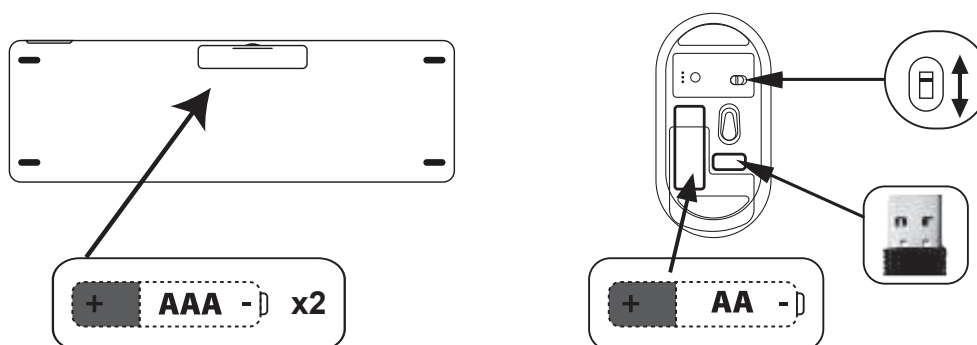
Step 1: Install Batteries

Keyboard:

Open the battery compartment cover on the bottom. Insert 2 new AAA batteries according to the polarity markings (+/-).

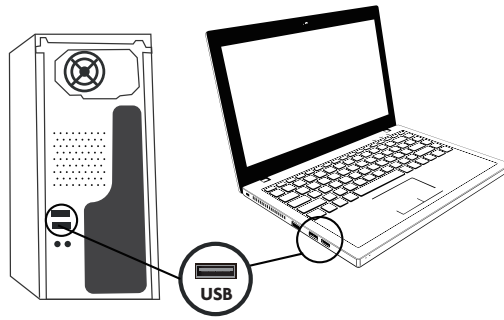
Mouse:

Open the battery compartment cover on the bottom. Insert 1 new AA battery according to the polarity markings (+/-). Remove the USB receiver from its storage slot.



Step 2: Connect the Receiver

Insert the USB receiver into a USB port on your computer (for optimal signal stability, use a rear USB port to minimize interference).



Step 3: Power On the Devices

Keyboard:

Turn on the power switch (ON/OFF) located on the top-right side of the keyboard.

Mouse:

Turn on the power switch (ON/OFF) located on the bottom of the mouse.

Pairing Instructions:

Plug the USB receiver into the USB port on your computer to use it.

*If the product does not work properly after inserting the receiver, please follow these steps to pair keyboard:

Press and hold the ESC + Q keys simultaneously for 3 seconds. The signal indicator on the top-right will slowly flash green. Unplug the USB receiver, then reinsert it into the USB port to complete pairing.

Usage Instructions

Usage Instructions

Keyboard Functions:

F1: Mute


F2: Volume -

F3: Volume +

F4: Previous Track

F5: Play/Pause

F6: Next Track

 : Calculator

 : Refresh the page

F7: Screen Brightness -

F8: Screen Brightness +

F9: Select All

F10: Copy

F11: Paste

F12: Cut

 : Search

 : Lock Screen

Mouse Functions

- Basic Operations:

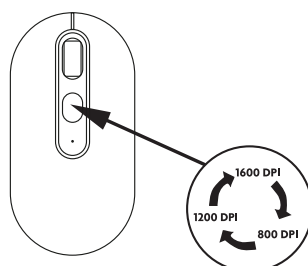
- Left-click: Select/Confirm

- Right-click: Open menu

- Scroll wheel: Scroll up/down or press (middle button function).

- DPI Switching:

Press the DPI button on the top to adjust cursor speed across 3 levels: 800DPI / 1200DPI / 1600DPI.



Maintenance & Care

- Cleaning:
Wipe the surface with a dry cloth. Avoid liquid contact.
- Battery Management:
Remove batteries if unused for extended periods to prevent leakage.

Troubleshooting

Issue&Solution

- No connection: 1. Ensure the receiver is firmly inserted. 2. Restart the device.
- Lagging/Unresponsive: 1. Use closer to the receiver. 2. Avoid wireless interference.
- Keys/clicks unresponsive: 1. Replace batteries. 2. Clean key/button contacts.
- Lost receiver: Buy a new compatible replacement.

Precautions

- Do not use in high-temperature, humid, or strong magnetic environments.
- Avoid heavy pressure or dropping the devices.
- Dispose of used batteries per local environmental regulations.
- Questions? Comments? Contact contact@culturefly.com

Do not mix old and new batteries

Do not mix alkaline, standard (carbon-zinc) , or rechargeable (ni-cad, ni-mh, etc.) batteries.

FCC Statement - 47 CFR Part 15 - Changes or modifications not expressly approved by the party responsible for compliance could void the user's authority to operate this device.

This device complies with part 15 of the FCC Rules. Operation is subject to the following two conditions: (1) This device may not cause harmful interference, and (2) this device must accept any interference received, including interference that may cause undesired operation.

This device has been tested and found to comply with the limits for a Class B digital device, pursuant to Part 15 of the FCC Rules. These limits are designed to provide reasonable protection against harmful interference in a residential installation. This device generates, uses and can radiate radio frequency energy and, if not installed and used in accordance with the instructions, may cause harmful interference to radio communications.

However, there is no guarantee that interference will not occur in a particular installation. If this device does cause harmful interference to radio or television reception, which can be determined by turning the device off and on, the user is encouraged to try to correct the interference by one or more of the following measures:

- Reorient or relocate the receiving antenna.**
- Increase the separation between the device and receiver.**
- Connect the device into an outlet on a circuit different from that to which the receiver is connected.**
- Consult the dealer or an experienced radio/TV technician for help**

Changes or modifications not expressly approved by the party responsible for compliance could void the user's authority to operate the equipment

Receiver: FCC ID: 2A2WN-JSQ33
Keyboard: FCC ID: 2A2WN-JP220
Mouse: FCC ID: 2A2WN-SB220