



MagJuice User Manual
MJ1001

Contents

Introduction	1
Key Features	2
Package Contains	3
Compatible Devices	3
Quick Guide	4
Buttons and LED Indicators	6
Specification	9
Warranty	11
Exclusion	12
IMPORTANT	13
Customer Service	14
FCC WARNING	15

Introduction

Sincerely thanks for your generous support and selecting MagJuice. This product is the world's first magnetic wireless phone charger with magnetic function, stylish design, high quality, and extended durability. It is a practical device that simplifies your charging and supports wireless charging with all Qi-enabled devices. Believe it would bring you the best emergent charging experience on-the-go.

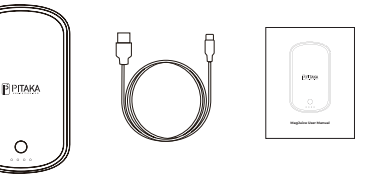
1

Key Features

- Magnetic Attach. Best Compatible with MagCase and MagCase Pro.
- Universal Compatibility: Works with all Qi-enabled devices.
- Compact & ergonomic design. Comfortable to hold in hands.
- Safe and reliable. Designed to provide overvoltage protection, under-voltage protection, over-temperature protection, overcurrent protection, short-circuit protection and FOD.

2

Package Contains:



MagJuice x1 USB TypeC Cable x1 User Manual x1

Compatible Devices

- iPhone 8/8 Plus/X/Xs/XR/Xs Max
- Samsung S7 edge /S8 /Note8 /S9 /Note9 /S10 /S10+ /S10e
- The other Qi-enabled devices

3

Quick Guide

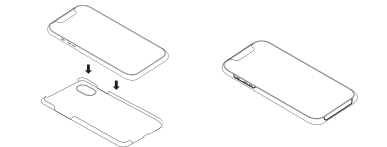
• Charge the MagJuice.

1, Use a charger with Type C connector and connect it to the MagJuice with the supplied USB TypeC Cable.

• Charge a phone with MagJuice.

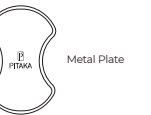
1, Get your phone ready.

1). If you are a MagCase user, put your phone into the MagCase so that it is ready to use.



4

2). If you are not using a MagCase, follow below steps to affix the supplied metal plate before using the MagJuice to charge your phone;



*Locate the metal plate supplied in the package.



*Scan below QR Code for alignment paper to help with locating the metal plate.

5

3). Attach the MagJuice to your phone with MagCase or metal plate, then press the button and it will auto align itself and charge wirelessly.



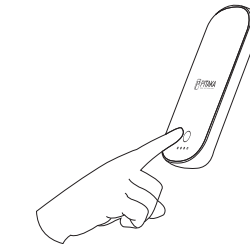
Buttons and LED Indicators



6

Buttons

- Single Click to
 - 1) Get the MagJuice ready to wireless charge your phone;
 - 2) Check the battery percentage.
- Double Click to turn off the wireless charging.



7

Led Indicators

- When clicking the button once, the LED indicators will light on as below;

Battery Percentage Indication

0% ~ 25%



25% ~ 50%



50% ~ 75%



75% ~ 100%



*Applicable only when home button is clicked

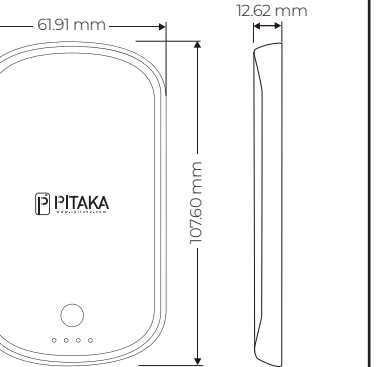
- When connecting the MagJuice with power, the LED indicators will light on based on the remaining battery and keep blinking.

- When charging your phone with the MagJuice, the LED indicators will light on based on the remaining battery.

8

Specification

Items	Specification
Width	61.91mm
Length	107.60mm
Thickness	12.62mm
Input	5V \mp 1.5A
Output	5V \mp 1.5A
Wireless Output	5W
Transmission Distance	\leq 8mm
Transmission Efficiency	75% Max
Working Frequency	110.1KHZ-205KHZ



Warranty

The PITAKA MagJuice is warranted for 12 months from the date of purchase.

The MagJuice is warranted to be free defects in materials and function under regular use for the lifetime of the product. A defect is defined as an imperfection or flaw that is produced by a manufacturing error, including malfunction of wireless charging or surface defect, etc.

This warranty is non-transferable and covers only the original end-user purchaser. PITAKA will only authorize the warranty claim if the product was purchased from the official store or authorized dealer.

MODIFICATION:

Any change or modification of this device will void the warranty.

Exclusion

Damages don't cover those resulting from abuse, not correctly maintained, alteration or misuse (including disassemble, drops), abnormal wear and tear, cosmetic damages that do not affect the functionality.

IMPORTANT

1. Do not disassemble the MagJuice or attempt to modify it in any way.
2. Do not attempt to power the MagJuice with any connector other than Type-C connector.
3. Do not attempt to replace any part of the MagJuice.
4. Do not keep the MagJuice in a high-temperature environment, including heat caused by intense sunlight or other forms of heat. Do not place it in fire or other excessively hot environments.
5. Do not throw the MagJuice in any common dustbin.
6. All parts have gone through a thorough quality assurance inspection. If you find that your MagJuice is excessively hot, is emitting odor, is deformed, abraded or is experiencing or demonstrating an abnormal phenomenon, immediately stop all product use and contact manufacturer.

7. If the MagJuice is intended by the purchaser to be used by a minor, purchasing adult agrees to provide detailed instructions and warnings to any minor prior to use. Failure to do so is the sole responsibility of the purchaser, who agrees to indemnify manufacturer for any unintended use/misuse by a minor.
8. Please charge up the MagJuice at least once for every three months to better maintain the battery life.

Customer Service

Tel: +852 9202 6223
Email: support@ipitaka.com
Web: www.ipitaka.com

FCC WARNING

This device complies with part 15 of the FCC Rules. Operation is subject to the following two conditions:
(1) this device may not cause harmful interference, and
(2) this device must accept any interference received, including interference that may cause undesired operation.

Any changes or modifications not expressly approved by the party responsible for compliance could void the user's authority to operate the equipment.

NOTE: This equipment has been tested and found to comply with the limits for a Class B digital device, pursuant to Part 15 of the FCC Rules. These limits are designed to provide reasonable protection against harmful interference in a residential installation.

This equipment generates, uses and can radiate radio

frequency energy and, if not installed and used in accordance with the instructions, may cause harmful interference to radio communications. However, there is no guarantee that interference will not occur in a particular installation.
If this equipment does cause harmful interference to radio or television reception, which can be determined by turning the equipment off and on, the user is encouraged to try to correct the interference by one or more of the following measures:
-- Reorient or relocate the receiving antenna.
-- Increase the separation between the equipment and receiver.
-- Connect the equipment into an outlet on a circuit different from that to which the receiver is connected.

-- Consult the dealer or an experienced radio/TV technician for help.

FCC RF Radiation Exposure Statement

This equipment complies with FCC RF radiation exposure limits set forth for an uncontrolled environment. This device and its antenna must not be co-located or operating in conjunction with any other antenna or transmitter. "To comply with FCC RF exposure compliance requirements, this grant is applicable to only Mobile Configurations. The antennas used for this transmitter must be installed to provide a separation distance of at least 20 cm from all persons and must not be co-located or operating in conjunction with any other antenna or transmitter." FCC ID: 2ARI5-MJ1001

