

Appendix D System check

D.1 Room: Ise Laboratory SAR#1

D.1.1 2024-04-12, 08:24

Room Temp 23.0 deg.C / Liquid Temp 23.0 deg.C

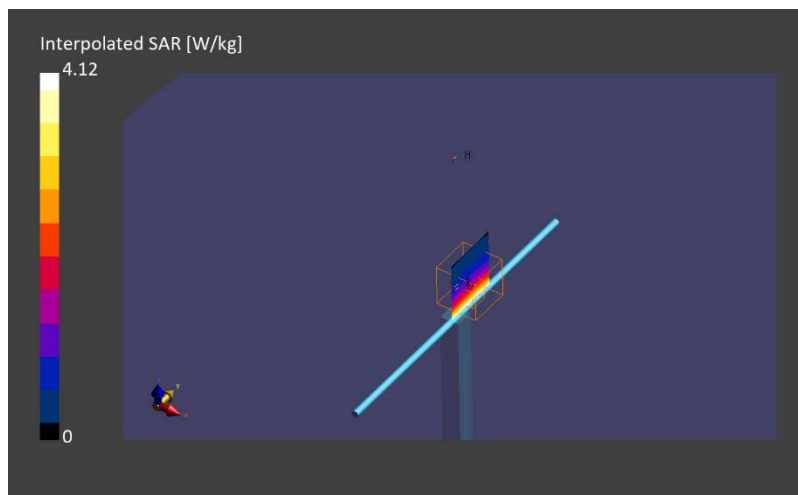
SAR1 Exposure Conditions

Phantom Section	Frequency [MHz]	Conversion Factor	TSL Permittivity	TSL Conductivity [S/m]
Flat	835.000	9.64	41.1	0.909

Hardware Setup

Phantom	TSL, Measured Date	Probe, Calibration Date	DAE, Calibration Date
ELI V5.0 (20deg probe tilt) - 1203	HBBL-600-10000 Checked: 2024-Apr-12	EX3DV4 - SN3825, 2023-07-12	DAE4 Sn1369, 2023-05-23

Scans Setup	-	-
Scan	Area Scan	Zoom Scan
Grid Extents [mm]	40.0 x 90.0	30.0 x 30.0 x 30.0
Grid Steps [mm]	10.0 x 15.0	6.0 x 6.0 x 1.5
Sensor Surface [mm]	3.0	1.4
Graded Grid	N/A	Yes
Grading Ratio	N/A	1.5
MAIA	N/A	N/A
Surface Detection	All points	VMS + 6p
Scan Method	Measured	Measured
Measurement Results	-	-
Scan	Area Scan	Zoom Scan
Date	2024-04-12, 08:18	2024-04-12, 08:24
psSAR1g [W/Kg]	2.47	2.47
psSAR10g [W/Kg]	1.62	1.59
Power Drift [dB]	-0.01	0.03
Power Scaling	Disabled	Disabled
TSL Correction	No correction	No correction
M2/M1 [%]	-	84.0
Dist 3dB Peak [mm]	-	17.9



D.1.2 2024-04-15, 13:03

Room Temp 23.0 deg.C / Liquid Temp 23.0 deg.C

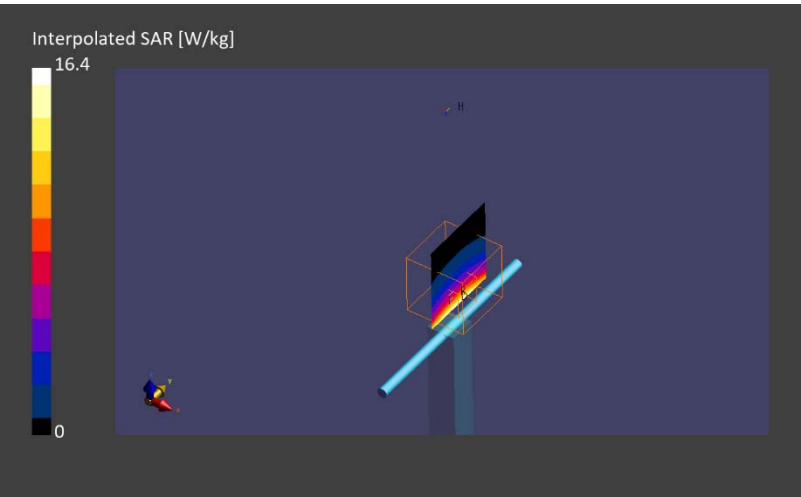
SAR1 Exposure Conditions

Phantom Section	Frequency [MHz]	Conversion Factor	TSL Permittivity	TSL Conductivity [S/m]
Flat	1750.000	8.77	38.0	1.35

Hardware Setup

Phantom	TSL, Measured Date	Probe, Calibration Date	DAE, Calibration Date
ELI V5.0 (20deg probe tilt) - 1203	HBBL-600-10000 Checked: 2024-Apr-15	EX3DV4 - SN3825, 2023-07-12	DAE4 Sn1369, 2023-05-23

Scans Setup	-	-
Scan	Area Scan	Zoom Scan
Grid Extents [mm]	40.0 x 90.0	30.0 x 30.0 x 30.0
Grid Steps [mm]	10.0 x 15.0	6.0 x 6.0 x 1.5
Sensor Surface [mm]	3.0	1.4
Graded Grid	N/A	Yes
Grading Ratio	N/A	1.5
MAIA	N/A	N/A
Surface Detection	VMS + 6p	VMS + 6p
Scan Method	Measured	Measured
Measurement Results	-	-
Scan	Area Scan	Zoom Scan
Date	2024-04-15, 12:57	2024-04-15, 13:03
psSAR1g [W/Kg]	8.60	8.38
psSAR10g [W/Kg]	4.68	4.41
Power Drift [dB]	-0.00	0.01
Power Scaling	Disabled	Disabled
TSL Correction	Positive only	Positive only
M2/M1 [%]	-	80.8
Dist 3dB Peak [mm]	-	10.8



D.1.3 2024-04-16, 16:35

Room Temp 23.0 deg.C / Liquid Temp 23.0 deg.C

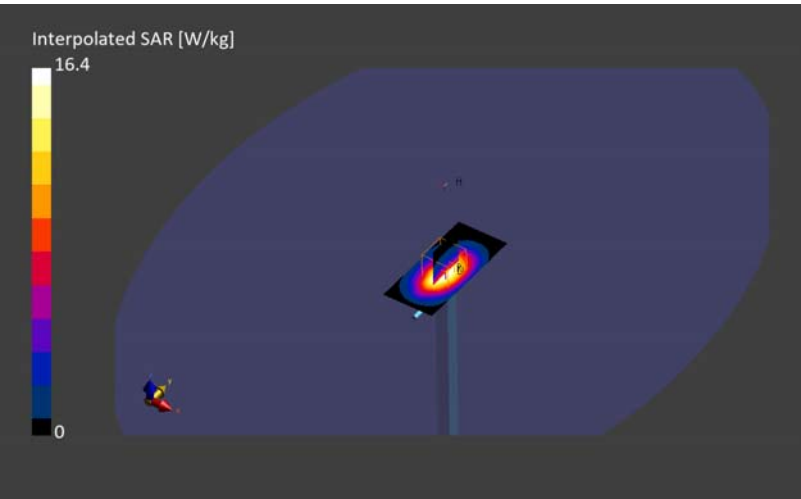
SAR1 Exposure Conditions

Phantom Section	Frequency [MHz]	Conversion Factor	TSL Permittivity	TSL Conductivity [S/m]
Flat	1750.000	8.77	37.3	1.31

Hardware Setup

Phantom	TSL, Measured Date	Probe, Calibration Date	DAE, Calibration Date
ELI V5.0 (20deg probe tilt) - 1203	HBBL-600-10000 Checked: 2024-Apr-16	EX3DV4 - SN3825, 2023-07-12	DAE4 Sn1369, 2023-05-23

Scans Setup	-	-
Scan	Area Scan	Zoom Scan
Grid Extents [mm]	40.0 x 90.0	30.0 x 30.0 x 30.0
Grid Steps [mm]	10.0 x 15.0	6.0 x 6.0 x 1.5
Sensor Surface [mm]	3.0	1.4
Graded Grid	N/A	Yes
Grading Ratio	N/A	1.5
MAIA	N/A	N/A
Surface Detection	VMS + 6p	VMS + 6p
Scan Method	Measured	Measured
Measurement Results	-	-
Scan	Area Scan	Zoom Scan
Date	2024-04-16, 16:29	2024-04-16, 16:35
psSAR1g [W/Kg]	8.76	8.55
psSAR10g [W/Kg]	4.71	4.50
Power Drift [dB]	0.01	0.02
Power Scaling	Disabled	Disabled
TSL Correction	Positive only	Positive only
M2/M1 [%]	-	81.3
Dist 3dB Peak [mm]	-	10.8



D.1.4 2024-04-17, 11:14

Room Temp 23.0 deg.C / Liquid Temp 23.0 deg.C

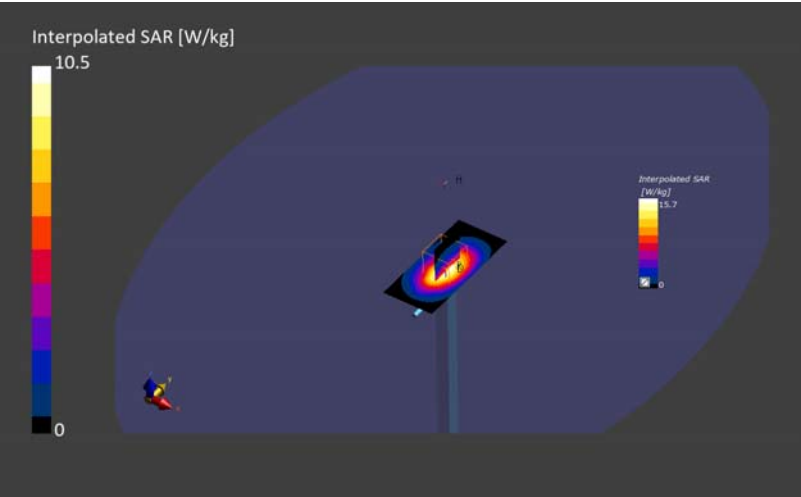
SAR1 Exposure Conditions

Phantom Section	Frequency [MHz]	Conversion Factor	TSL Permittivity	TSL Conductivity [S/m]
Flat	1750.000	8.77	37.8	1.28

Hardware Setup

Phantom	TSL, Measured Date	Probe, Calibration Date	DAE, Calibration Date
ELI V5.0 (20deg probe tilt) - 1203	HBBL-600-10000 Checked: 2024-Apr-17	EX3DV4 - SN3825, 2023-07-12	DAE4 Sn1369, 2023-05-23

Scans Setup	-	-
Scan	Area Scan	Zoom Scan
Grid Extents [mm]	40.0 x 90.0	30.0 x 30.0 x 30.0
Grid Steps [mm]	10.0 x 15.0	6.0 x 6.0 x 1.5
Sensor Surface [mm]	3.0	1.4
Graded Grid	N/A	Yes
Grading Ratio	N/A	1.5
MAIA	N/A	N/A
Surface Detection	VMS + 6p	VMS + 6p
Scan Method	Measured	Measured
Measurement Results	-	-
Scan	Area Scan	Zoom Scan
Date	2024-04-17, 11:08	2024-04-17, 11:14
psSAR1g [W/Kg]	8.73	8.40
psSAR10g [W/Kg]	4.63	4.41
Power Drift [dB]	-0.02	-0.03
Power Scaling	Disabled	Disabled
TSL Correction	Positive only	Positive only
M2/M1 [%]	-	81.2
Dist 3dB Peak [mm]	-	10.8



D.1.5 2024-04-17, 11:41

Room Temp 23.0 deg.C / Liquid Temp 23.0 deg.C

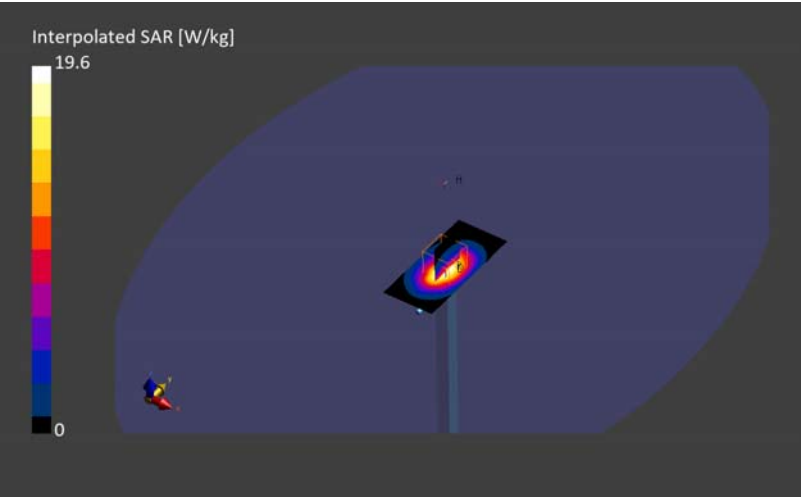
SAR1 Exposure Conditions

Phantom Section	Frequency [MHz]	Conversion Factor	TSL Permittivity	TSL Conductivity [S/m]
Flat	1950.000	8.35	37.6	1.38

Hardware Setup

Phantom	TSL, Measured Date	Probe, Calibration Date	DAE, Calibration Date
ELI V5.0 (20deg probe tilt) - 1203	HBBL-600-10000 Checked: 2024-Apr-17	EX3DV4 - SN3825, 2023-07-12	DAE4 Sn1369, 2023-05-23

Scans Setup	-	-
Scan	Area Scan	Zoom Scan
Grid Extents [mm]	40.0 x 90.0	30.0 x 30.0 x 30.0
Grid Steps [mm]	10.0 x 15.0	6.0 x 6.0 x 1.5
Sensor Surface [mm]	3.0	1.4
Graded Grid	N/A	Yes
Grading Ratio	N/A	1.5
MAIA	N/A	N/A
Surface Detection	VMS + 6p	VMS + 6p
Scan Method	Measured	Measured
Measurement Results	-	-
Scan	Area Scan	Zoom Scan
Date	2024-04-17, 11:35	2024-04-17, 11:41
psSAR1g [W/Kg]	10.1	9.84
psSAR10g [W/Kg]	5.21	5.04
Power Drift [dB]	0.02	-0.01
Power Scaling	Disabled	Disabled
TSL Correction	Positive only	Positive only
M2/M1 [%]	-	80.4
Dist 3dB Peak [mm]	-	9.7



D.1.6 2024-04-18, 14:52

Room Temp 23.0 deg.C / Liquid Temp 22.5 deg.C

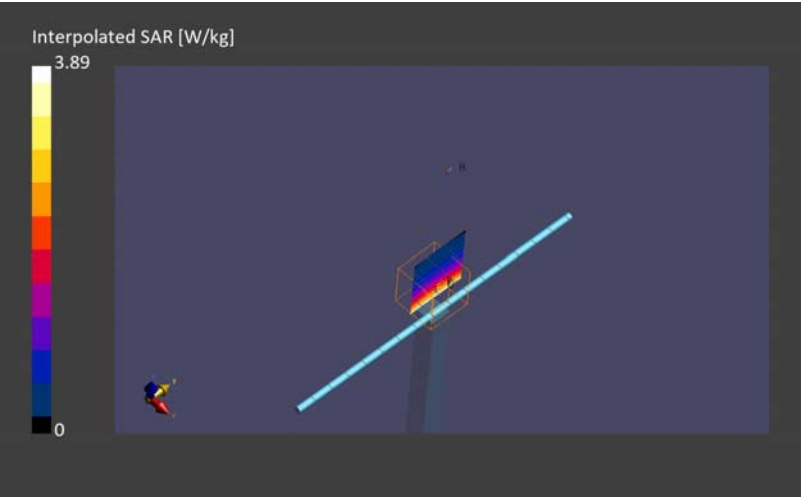
SAR1 Exposure Conditions

Frequency [MHz]	Conversion Factor	TSL Conductivity [S/m]	TSL Permittivity
835.000	9.64	0.913	40.2

Hardware Setup

Phantom	TSL, Measured Date	Probe, Calibration Date	DAE, Calibration Date
ELI V5.0 (20deg probe tilt) - 1203	HBBL-600-10000 Checked: 2024-Apr-18	EX3DV4 - SN3825, 2023-07-12	DAE4 Sn1369, 2023-05-23

Scans Setup	-	-
Scan	Area Scan	Zoom Scan
Grid Extents [mm]	40.0 x 90.0	30.0 x 30.0 x 30.0
Grid Steps [mm]	10.0 x 15.0	6.0 x 6.0 x 1.5
Sensor Surface [mm]	3.0	1.4
Graded Grid	N/A	Yes
Grading Ratio	N/A	1.5
MAIA	N/A	N/A
Surface Detection	All points	All points
Scan Method	Measured	Measured
Measurement Results	-	-
Scan	Area Scan	Zoom Scan
Date	2024-04-18, 14:43	2024-04-18, 14:52
psSAR1g [W/Kg]	2.54	2.56
psSAR10g [W/Kg]	1.68	1.66
Power Drift [dB]	0.05	-0.01
Power Scaling	Disabled	Disabled
TSL Correction	No correction	No correction
M2/M1 [%]	-	85.0
Dist 3dB Peak [mm]	-	15.6



D.1.7 2024-04-18, 16:26

Room Temp 23.0 deg.C / Liquid Temp 22.5 deg.C

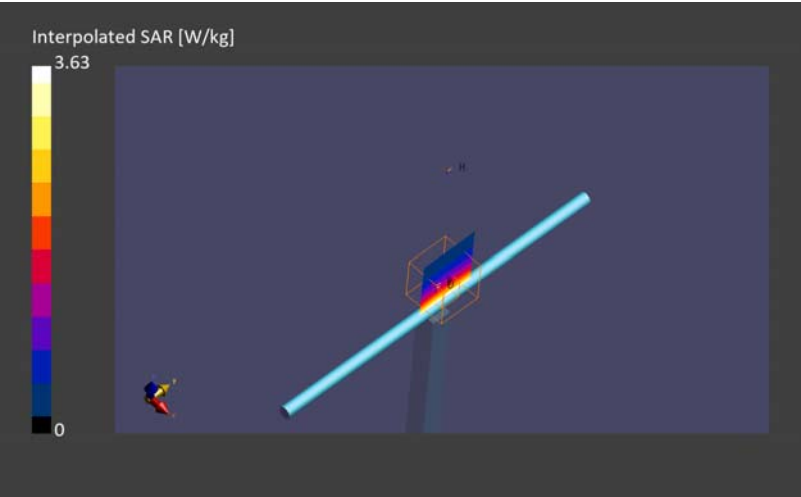
SAR1 Exposure Conditions

Frequency [MHz]	Conversion Factor	TSL Conductivity [S/m]	TSL Permittivity
750.000	9.79	0.884	40.5

Hardware Setup

Phantom	TSL, Measured Date	Probe, Calibration Date	DAE, Calibration Date
ELI V5.0 (20deg probe tilt) - 1203	HBBL-600-10000 Checked: 2024-Apr-18	EX3DV4 - SN3825, 2023-07-12	DAE4 Sn1369, 2023-05-23

Scans Setup	-	-
Scan	Area Scan	Zoom Scan
Grid Extents [mm]	40.0 x 90.0	30.0 x 30.0 x 30.0
Grid Steps [mm]	10.0 x 15.0	6.0 x 6.0 x 1.5
Sensor Surface [mm]	3.0	1.4
Graded Grid	N/A	Yes
Grading Ratio	N/A	1.5
MAIA	N/A	N/A
Surface Detection	VMS + 6p	VMS + 6p
Scan Method	Measured	Measured
Measurement Results	-	-
Scan	Area Scan	Zoom Scan
Date	2024-04-18, 16:21	2024-04-18, 16:26
psSAR1g [W/Kg]	2.32	2.26
psSAR10g [W/Kg]	1.55	1.47
Power Drift [dB]	0.01	0.02
Power Scaling	Disabled	Disabled
TSL Correction	No correction	No correction
M2/M1 [%]	-	85.9
Dist 3dB Peak [mm]	-	20.5



D.1.8 2024-04-19, 12:12

Room Temp 23.0 deg.C / Liquid Temp 22.5 deg.C

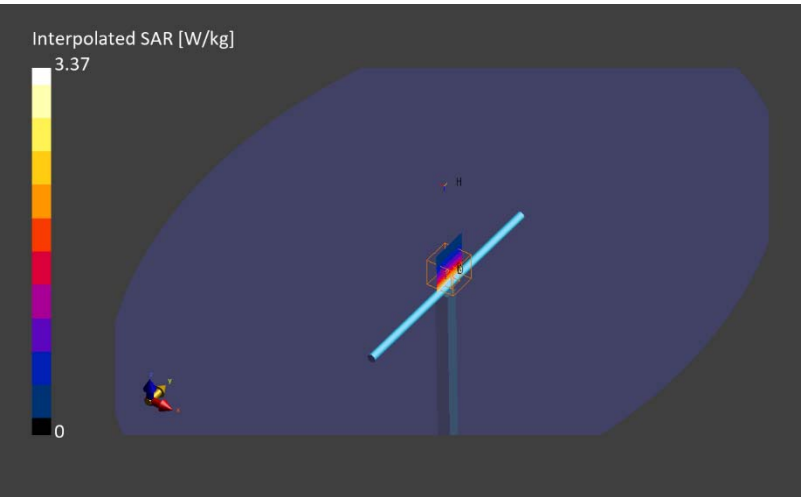
SAR1 Exposure Conditions

Phantom Section	Frequency [MHz]	Conversion Factor	TSL Permittivity	TSL Conductivity [S/m]
Flat	750.000	9.79	40.5	0.874

Hardware Setup

Phantom	TSL, Measured Date	Probe, Calibration Date	DAE, Calibration Date
ELI V5.0 (20deg probe tilt) - 1203	HBBL-600-10000 Checked: 2024-Apr-19	EX3DV4 - SN3825, 2023-07-12	DAE4 Sn1369, 2023-05-23

Scans Setup	-	-
Scan	Area Scan	Zoom Scan
Grid Extents [mm]	40.0 x 90.0	30.0 x 30.0 x 30.0
Grid Steps [mm]	10.0 x 15.0	6.0 x 6.0 x 1.5
Sensor Surface [mm]	3.0	1.4
Graded Grid	N/A	Yes
Grading Ratio	N/A	1.5
MAIA	N/A	N/A
Surface Detection	All points	All points
Scan Method	Measured	Measured
Measurement Results	-	-
Scan	Area Scan	Zoom Scan
Date	2024-04-19, 12:03	2024-04-19, 12:12
psSAR1g [W/Kg]	2.20	2.16
psSAR10g [W/Kg]	1.48	1.42
Power Drift [dB]	-0.19	0.00
Power Scaling	Disabled	Disabled
TSL Correction	No correction	No correction
M2/M1 [%]	-	86.2
Dist 3dB Peak [mm]	-	> 15.0



D.1.9 2024-04-19, 13:15

Room Temp 23.0 deg.C / Liquid Temp 22.5 deg.C

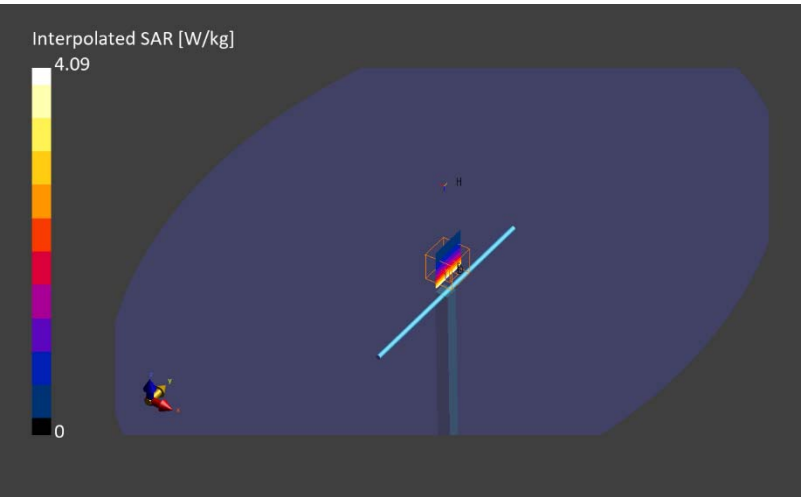
SAR1 Exposure Conditions

Phantom Section	Frequency [MHz]	Conversion Factor	TSL Permittivity	TSL Conductivity [S/m]
Flat	835.000	9.64	40.1	0.902

Hardware Setup

Phantom	TSL, Measured Date	Probe, Calibration Date	DAE, Calibration Date
ELI V5.0 (20deg probe tilt) - 1203	HBBL-600-10000 Checked: 2024-Apr-19	EX3DV4 - SN3825, 2023-07-12	DAE4 Sn1369, 2023-05-23

Scans Setup	-	-
Scan	Area Scan	Zoom Scan
Grid Extents [mm]	40.0 x 90.0	30.0 x 30.0 x 30.0
Grid Steps [mm]	10.0 x 15.0	6.0 x 6.0 x 1.5
Sensor Surface [mm]	3.0	1.4
Graded Grid	N/A	Yes
Grading Ratio	N/A	1.5
MAIA	N/A	N/A
Surface Detection	VMS + 6p	VMS + 6p
Scan Method	Measured	Measured
Measurement Results	-	-
Scan	Area Scan	Zoom Scan
Date	2024-04-19, 13:09	2024-04-19, 13:15
psSAR1g [W/Kg]	2.66	2.59
psSAR10g [W/Kg]	1.76	1.68
Power Drift [dB]	0.03	-0.01
Power Scaling	Disabled	Disabled
TSL Correction	No correction	No correction
M2/M1 [%]	-	86.6
Dist 3dB Peak [mm]	-	19.7



D.1.10 2024-04-21, 11:37

Room Temp 23.0 deg.C / Liquid Temp 23.0 deg.C

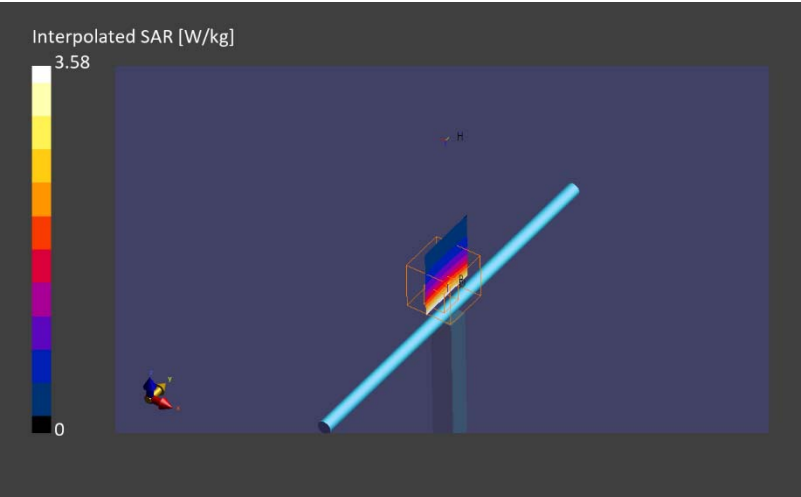
SAR1 Exposure Conditions

Phantom Section	Frequency [MHz]	Conversion Factor	TSL Permittivity	TSL Conductivity [S/m]
Flat	750.000	9.79	42.4	0.890

Hardware Setup

Phantom	TSL, Measured Date	Probe, Calibration Date	DAE, Calibration Date
ELI V5.0 (20deg probe tilt) - 1203	HBBL-600-10000 Checked: 2024-Apr-21	EX3DV4 - SN3825, 2023-07-12	DAE4 Sn1369, 2023-05-23

Scans Setup	-	-
Scan	Area Scan	Zoom Scan
Grid Extents [mm]	40.0 x 90.0	30.0 x 30.0 x 30.0
Grid Steps [mm]	10.0 x 15.0	6.0 x 6.0 x 1.5
Sensor Surface [mm]	3.0	1.4
Graded Grid	N/A	Yes
Grading Ratio	N/A	1.5
MAIA	N/A	N/A
Surface Detection	All points	All points
Scan Method	Measured	Measured
Measurement Results	-	-
Scan	Area Scan	Zoom Scan
Date	2024-04-21, 11:28	2024-04-21, 11:37
psSAR1g [W/Kg]	2.32	2.27
psSAR10g [W/Kg]	1.54	1.47
Power Drift [dB]	-0.20	-0.02
Power Scaling	Disabled	Disabled
TSL Correction	No correction	No correction
M2/M1 [%]	-	86.3
Dist 3dB Peak [mm]	-	19.0



D.1.11 2024-04-21, 11:58

Room Temp 23.0 deg.C / Liquid Temp 23.0 deg.C

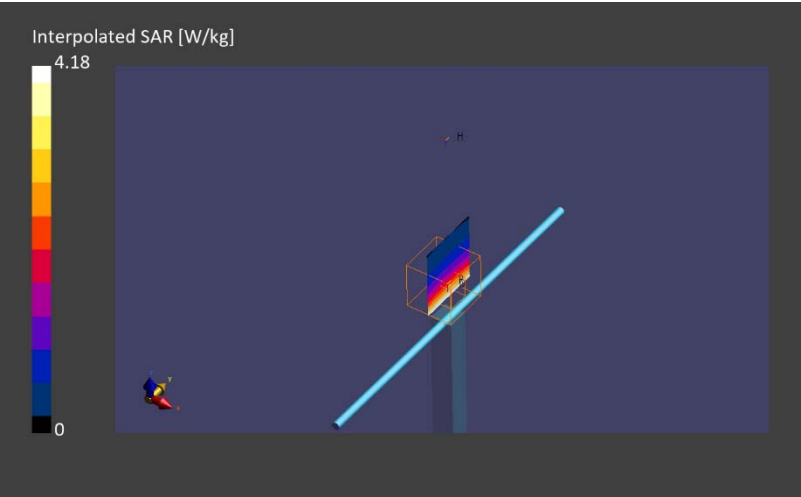
SAR1 Exposure Conditions

Phantom Section	Frequency [MHz]	Conversion Factor	TSL Permittivity	TSL Conductivity [S/m]
Flat	835.000	9.64	42.1	0.918

Hardware Setup

Phantom	TSL, Measured Date	Probe, Calibration Date	DAE, Calibration Date
ELI V5.0 (20deg probe tilt) - 1203	HBBL-600-10000 Checked: 2024-Apr-21	EX3DV4 - SN3825, 2023-07-12	DAE4 Sn1369, 2023-05-23

Scans Setup	-	-
Scan	Area Scan	Zoom Scan
Grid Extents [mm]	40.0 x 90.0	30.0 x 30.0 x 30.0
Grid Steps [mm]	10.0 x 15.0	6.0 x 6.0 x 1.5
Sensor Surface [mm]	3.0	1.4
Graded Grid	N/A	Yes
Grading Ratio	N/A	1.5
MAIA	N/A	N/A
Surface Detection	All points	All points
Scan Method	Measured	Measured
Measurement Results	-	-
Scan	Area Scan	Zoom Scan
Date	2024-04-21, 11:49	2024-04-21, 11:58
psSAR1g [W/Kg]	2.56	2.62
psSAR10g [W/Kg]	1.69	1.69
Power Drift [dB]	0.03	0.02
Power Scaling	Disabled	Disabled
TSL Correction	No correction	No correction
M2/M1 [%]	-	85.3
Dist 3dB Peak [mm]	-	19.0



D.1.12 2024-04-22, 11:17

Room Temp 22.0 deg.C / Liquid Temp 22.0 deg.C

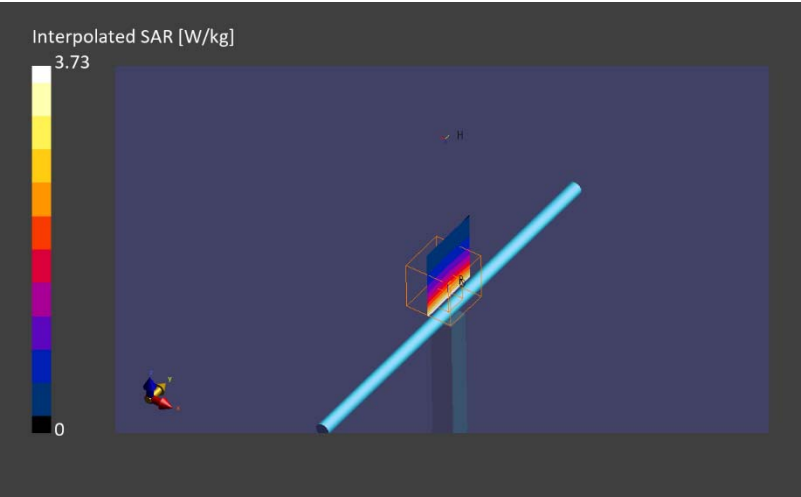
SAR1 Exposure Conditions

Phantom Section	Frequency [MHz]	Conversion Factor	TSL Permittivity	TSL Conductivity [S/m]
Flat	750.000	9.79	43.2	0.912

Hardware Setup

Phantom	TSL, Measured Date	Probe, Calibration Date	DAE, Calibration Date
ELI V5.0 (20deg probe tilt) - 1203	HBBL-600-10000 Checked: 2024-Apr-22	EX3DV4 - SN3825, 2023-07-12	DAE4 Sn1369, 2023-05-23

Scans Setup	-	-
Scan	Area Scan	Zoom Scan
Grid Extents [mm]	40.0 x 90.0	30.0 x 30.0 x 30.0
Grid Steps [mm]	10.0 x 15.0	6.0 x 6.0 x 1.5
Sensor Surface [mm]	3.0	1.4
Graded Grid	N/A	Yes
Grading Ratio	N/A	1.5
MAIA	N/A	N/A
Surface Detection	All points	All points
Scan Method	Measured	Measured
Measurement Results	-	-
Scan	Area Scan	Zoom Scan
Date	2024-04-22, 11:08	2024-04-22, 11:17
psSAR1g [W/Kg]	2.33	2.33
psSAR10g [W/Kg]	1.56	1.52
Power Drift [dB]	0.04	-0.01
Power Scaling	Disabled	Disabled
TSL Correction	No correction	No correction
M2/M1 [%]	-	85.8
Dist 3dB Peak [mm]	-	19.0



D.1.13 2024-04-22, 10:29

Room Temp 22.0 deg.C / Liquid Temp 22.0 deg.C

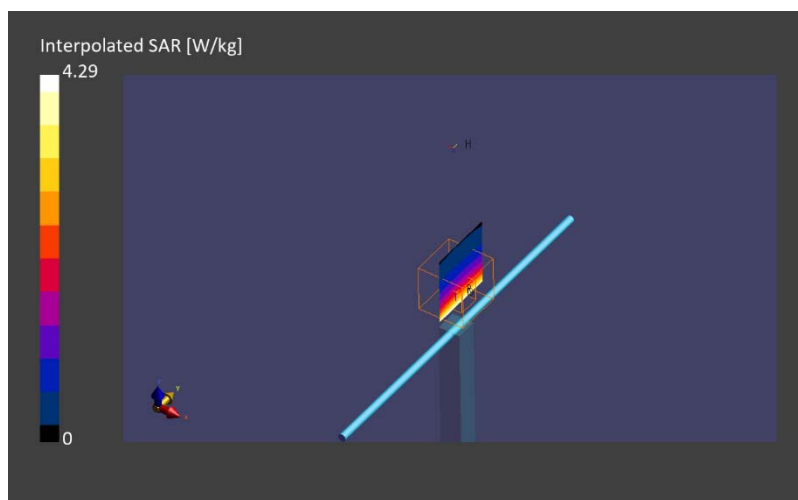
SAR1 Exposure Conditions

Phantom Section	Frequency [MHz]	Conversion Factor	TSL Permittivity	TSL Conductivity [S/m]
Flat	835.000	9.64	42.8	0.941

Hardware Setup

Phantom	TSL, Measured Date	Probe, Calibration Date	DAE, Calibration Date
ELI V5.0 (20deg probe tilt) - 1203	HBBL-600-10000 Checked: 2024-Apr-22	EX3DV4 - SN3825, 2023-07-12	DAE4 Sn1369, 2023-05-23

Scans Setup	-	-
Scan	Area Scan	Zoom Scan
Grid Extents [mm]	40.0 x 90.0	30.0 x 30.0 x 30.0
Grid Steps [mm]	10.0 x 15.0	6.0 x 6.0 x 1.5
Sensor Surface [mm]	3.0	1.4
Graded Grid	N/A	Yes
Grading Ratio	N/A	1.5
MAIA	N/A	N/A
Surface Detection	All points	VMS + 6p
Scan Method	Measured	Measured
Measurement Results	-	-
Scan	Area Scan	Zoom Scan
Date	2024-04-22, 10:23	2024-04-22, 10:29
psSAR1g [W/Kg]	2.57	2.58
psSAR10g [W/Kg]	1.71	1.65
Power Drift [dB]	0.07	0.00
Power Scaling	Disabled	Disabled
TSL Correction	No correction	No correction
M2/M1 [%]	-	84.3
Dist 3dB Peak [mm]	-	17.0



D.1.14 2024-04-23, 10:51

Room Temp 22.0 deg.C / Liquid Temp 22.0 deg.C

UID CW, 0--

SAR1 Exposure Conditions

Phantom Section	Frequency [MHz]	Conversion Factor	TSL Permittivity	TSL Conductivity [S/m]
Flat	750.000	9.79	42.5	0.899

Hardware Setup

Phantom	TSL, Measured Date	Probe, Calibration Date	DAE, Calibration Date
ELI V5.0 (20deg probe tilt) - 1203	HBBL-600-10000 Checked: 2024-Apr-21	EX3DV4 - SN3825, 2023-07-12	DAE4 Sn1369, 2023-05-23

Scans Setup	-	-
Scan	Area Scan	Zoom Scan
Grid Extents [mm]	40.0 x 90.0	30.0 x 30.0 x 30.0
Grid Steps [mm]	10.0 x 15.0	6.0 x 6.0 x 1.5
Sensor Surface [mm]	3.0	1.4
Graded Grid	N/A	Yes
Grading Ratio	N/A	1.5
MAIA	N/A	N/A
Surface Detection	All points	VMS + 6p
Scan Method	Measured	Measured
Measurement Results	-	-
Scan	Area Scan	Zoom Scan
Date	2024-04-23, 10:45	2024-04-23, 10:51
psSAR1g [W/Kg]	2.27	2.22
psSAR8g [W/Kg]	1.60	1.52
psSAR10g [W/Kg]	1.51	1.44
Power Drift [dB]	-0.00	-0.00
Power Scaling	Disabled	Disabled
TSL Correction	No correction	No correction
M2/M1 [%]	-	86.1
Dist 3dB Peak [mm]	-	19.7



D.1.15 2024-04-23, 11:52

Room Temp 22.0 deg.C / Liquid Temp 22.0 deg.C

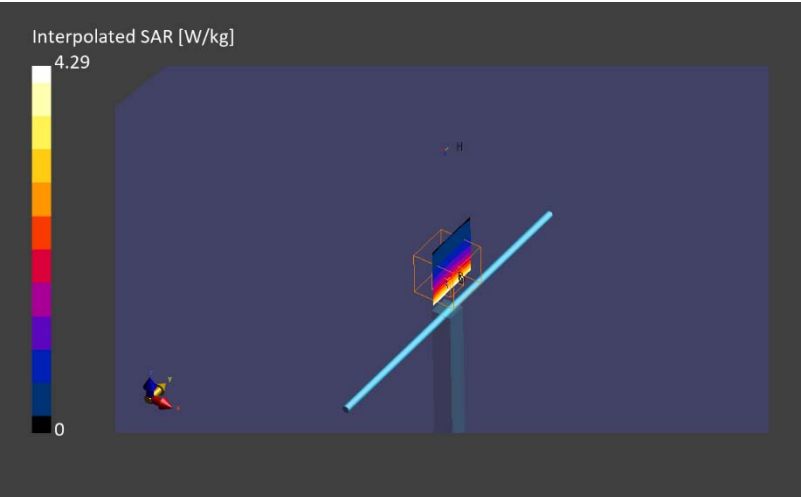
SAR1 Exposure Conditions

Phantom Section	Frequency [MHz]	Conversion Factor	TSL Permittivity	TSL Conductivity [S/m]
Flat	835.000	9.64	42.2	0.927

Hardware Setup

Phantom	TSL, Measured Date	Probe, Calibration Date	DAE, Calibration Date
ELI V5.0 (20deg probe tilt) - 1203	HBBL-600-10000 Checked: 2024-Apr-21	EX3DV4 - SN3825, 2023-07-12	DAE4 Sn1369, 2023-05-23

Scans Setup	-	-
Scan	Area Scan	Zoom Scan
Grid Extents [mm]	40.0 x 90.0	30.0 x 30.0 x 30.0
Grid Steps [mm]	10.0 x 15.0	6.0 x 6.0 x 1.5
Sensor Surface [mm]	3.0	1.4
Graded Grid	N/A	Yes
Grading Ratio	N/A	1.5
MAIA	N/A	N/A
Surface Detection	VMS + 6p	VMS + 6p
Scan Method	Measured	Measured
Measurement Results	-	-
Scan	Area Scan	Zoom Scan
Date	2024-04-23, 11:46	2024-04-23, 11:52
psSAR1g [W/Kg]	2.60	2.55
psSAR8g [W/Kg]	1.82	1.74
psSAR10g [W/Kg]	1.72	1.65
Power Drift [dB]	0.03	0.00
Power Scaling	Disabled	Disabled
TSL Correction	No correction	No correction
M2/M1 [%]	-	84.6
Dist 3dB Peak [mm]	-	21.3



D.1.16 2024-04-24, 09:34

Room Temp 22.0 deg.C / Liquid Temp 22.0 deg.C

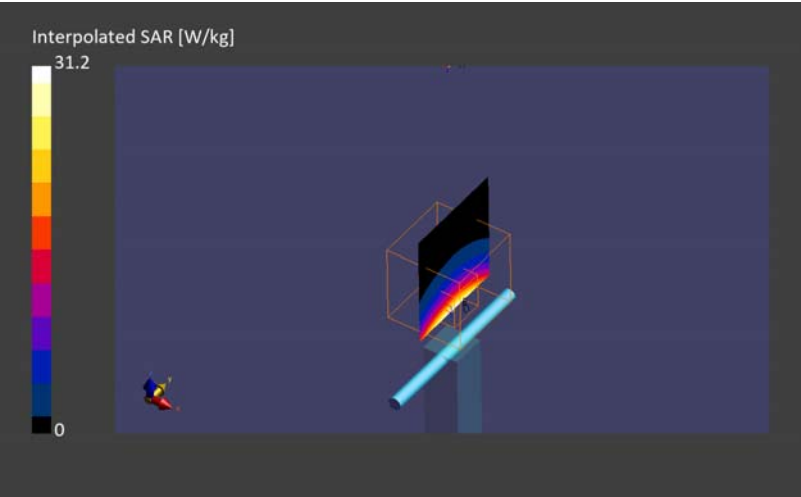
SAR1 Exposure Conditions

Phantom Section	Frequency [MHz]	Conversion Factor	TSL Permittivity	TSL Conductivity [S/m]
Flat	2600.000	7.47	39.0	1.91

Hardware Setup

Phantom	TSL, Measured Date	Probe, Calibration Date	DAE, Calibration Date
ELI V5.0 (20deg probe tilt) - 1203	HBBL-600-10000 Checked:2024-Apr-24	EX3DV4 - SN3917, 2023-05-23	DAE4 Sn1369, 2023-05-23

Scans Setup		-	-
Scan	Area Scan	Zoom Scan	
Grid Extents [mm]	40.0 x 80.0	30.0 x 30.0 x 30.0	
Grid Steps [mm]	10.0 x 10.0	5.0 x 5.0 x 1.5	
Sensor Surface [mm]	3.0	1.4	
Graded Grid	N/A	Yes	
Grading Ratio	N/A	1.5	
MAIA	N/A	N/A	
Surface Detection	VMS + 6p	VMS + 6p	
Scan Method	Measured	Measured	
Measurement Results		-	-
Scan	Area Scan	Zoom Scan	
Date	2024-04-24, 09:27	2024-04-24, 09:34	
psSAR1g [W/Kg]	15.0	14.6	
psSAR10g [W/Kg]	6.70	6.60	
Power Drift [dB]	-0.01	-0.01	
Power Scaling	Disabled	Disabled	
TSL Correction	No correction	No correction	
M2/M1 [%]	-	80.0	
Dist 3dB Peak [mm]	-	9.1	



D.1.17 2024-04-24, 17:04

Room Temp 22.0 deg.C / Liquid Temp 22.0 deg.C

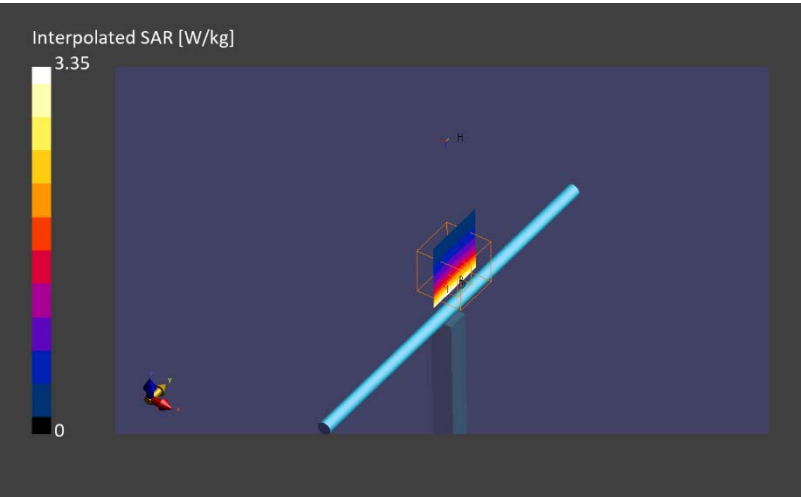
SAR1 Exposure Conditions

Phantom Section	Frequency [MHz]	Conversion Factor	TSL Permittivity	TSL Conductivity [S/m]
Flat	750.000	10.09	41.4	0.897

Hardware Setup

Phantom	TSL, Measured Date	Probe, Calibration Date	DAE, Calibration Date
ELI V5.0 (20deg probe tilt) - 1203	HBBL-600-10000 Checked: 2024-Apr-24	EX3DV4 - SN3917, 2023-05-23	DAE4 Sn1369, 2023-05-23

Scans Setup	-	-
Scan	Area Scan	Zoom Scan
Grid Extents [mm]	40.0 x 90.0	30.0 x 30.0 x 30.0
Grid Steps [mm]	10.0 x 15.0	6.0 x 6.0 x 1.5
Sensor Surface [mm]	3.0	1.4
Graded Grid	N/A	Yes
Grading Ratio	N/A	1.5
MAIA	N/A	N/A
Surface Detection	VMS + 6p	VMS + 6p
Scan Method	Measured	Measured
Measurement Results	-	-
Scan	Area Scan	Zoom Scan
Date	2024-04-24, 16:59	2024-04-24, 17:04
psSAR1g [W/Kg]	2.28	2.21
psSAR10g [W/Kg]	1.53	1.44
Power Drift [dB]	0.01	0.01
Power Scaling	Disabled	Disabled
TSL Correction	No correction	No correction
M2/M1 [%]	-	88.4
Dist 3dB Peak [mm]	-	> 15.0



D.1.18 2024-04-24, 16:44

Room Temp 22.0 deg.C / Liquid Temp 22.0 deg.C

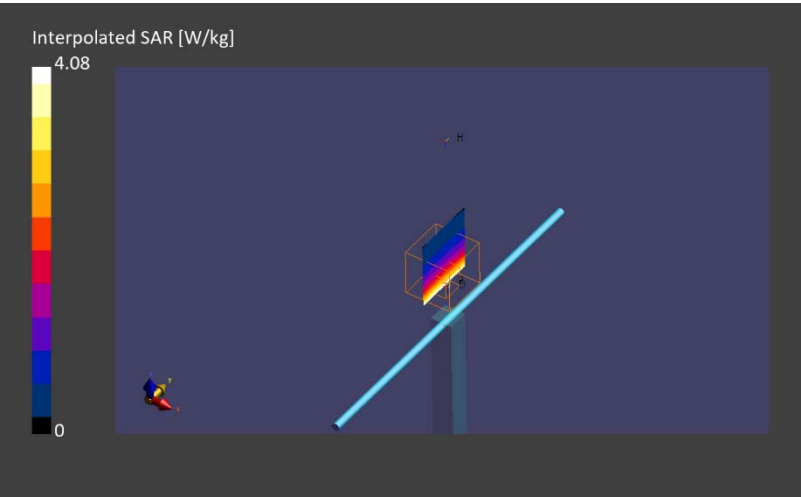
SAR1 Exposure Conditions

Phantom Section	Frequency [MHz]	Conversion Factor	TSL Permittivity	TSL Conductivity [S/m]
Flat	835.000	10.04	41.0	0.929

Hardware Setup

Phantom	TSL, Measured Date	Probe, Calibration Date	DAE, Calibration Date
ELI V5.0 (20deg probe tilt) - 1203	HBBL-600-10000 Checked: 2024-Apr-24	EX3DV4 - SN3917, 2023-05-23	DAE4 Sn1369, 2023-05-23

Scans Setup	-	-
Scan	Area Scan	Zoom Scan
Grid Extents [mm]	40.0 x 90.0	30.0 x 30.0 x 30.0
Grid Steps [mm]	10.0 x 15.0	6.0 x 6.0 x 1.5
Sensor Surface [mm]	3.0	1.4
Graded Grid	N/A	Yes
Grading Ratio	N/A	1.5
MAIA	N/A	N/A
Surface Detection	VMS + 6p	VMS + 6p
Scan Method	Measured	Measured
Measurement Results	-	-
Scan	Area Scan	Zoom Scan
Date	2024-04-24, 16:39	2024-04-24, 16:44
psSAR1g [W/Kg]	2.57	2.54
psSAR10g [W/Kg]	1.69	1.64
Power Drift [dB]	0.04	0.02
Power Scaling	Disabled	Disabled
TSL Correction	No correction	No correction
M2/M1 [%]	-	85.9
Dist 3dB Peak [mm]	-	> 15.0



D.1.19 2024-04-25, 15:09

Room Temp 22.0 deg.C / Liquid Temp 21.5 deg.C

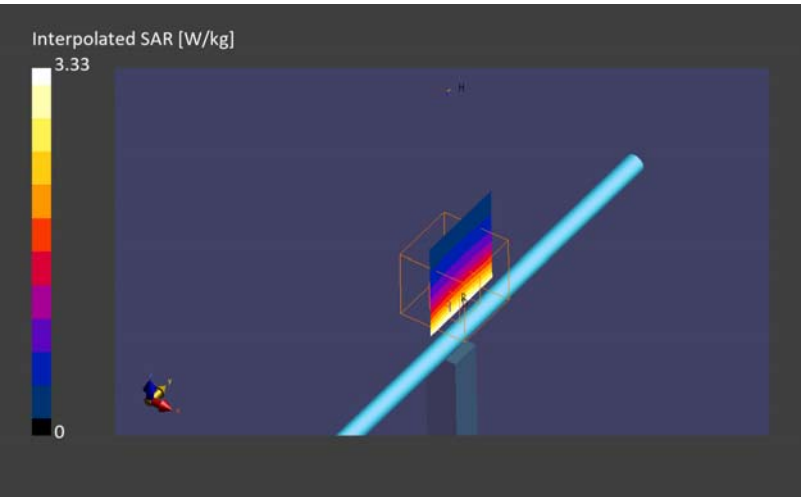
SAR1 Exposure Conditions

Phantom Section	Frequency [MHz]	Conversion Factor	TSL Permittivity	TSL Conductivity [S/m]
Flat	750.000	10.09	40.4	0.892

Hardware Setup

Phantom	TSL, Measured Date	Probe, Calibration Date	DAE, Calibration Date
ELI V5.0 (20deg probe tilt) - 1203	HBBL-600-10000 Checked: 2024-Apr-25	EX3DV4 - SN3917, 2023-05-23	DAE4 Sn1369, 2023-05-23

Scans Setup	-	-
Scan	Area Scan	Zoom Scan
Grid Extents [mm]	40.0 x 90.0	30.0 x 30.0 x 30.0
Grid Steps [mm]	10.0 x 15.0	6.0 x 6.0 x 1.5
Sensor Surface [mm]	3.0	1.4
Graded Grid	N/A	Yes
Grading Ratio	N/A	1.5
MAIA	N/A	N/A
Surface Detection	VMS + 6p	VMS + 6p
Scan Method	Measured	Measured
Measurement Results	-	-
Scan	Area Scan	Zoom Scan
Date	2024-04-25, 15:03	2024-04-25, 15:09
psSAR1g [W/Kg]	2.33	2.24
psSAR10g [W/Kg]	1.55	1.47
Power Drift [dB]	0.01	0.03
Power Scaling	Disabled	Disabled
TSL Correction	No correction	No correction
M2/M1 [%]	-	89.2
Dist 3dB Peak [mm]	-	19.7



D.1.20 2024-04-25, 16:01

Room Temp 22.0 deg.C / Liquid Temp 21.5 deg.C

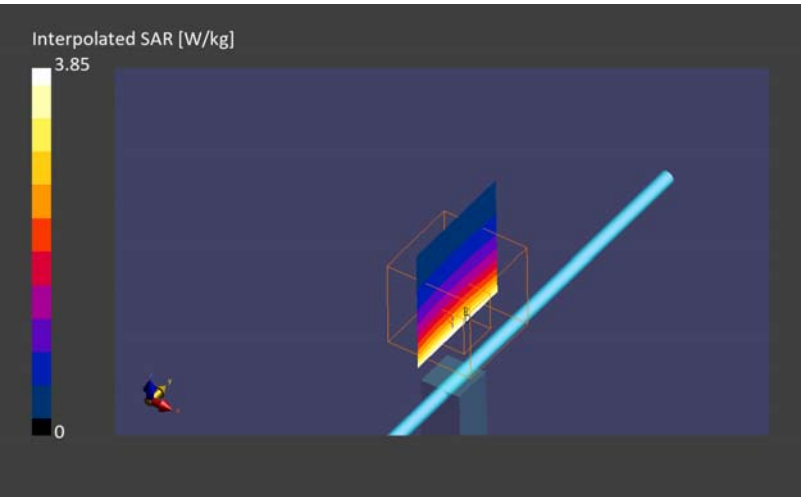
SAR1 Exposure Conditions

Phantom Section	Frequency [MHz]	Conversion Factor	TSL Permittivity	TSL Conductivity [S/m]
Flat	835.000	10.04	40.0	0.922

Hardware Setup

Phantom	TSL, Measured Date	Probe, Calibration Date	DAE, Calibration Date
ELI V5.0 (20deg probe tilt) - 1203	HBBL-600-10000 Checked: 2024-Apr-25	EX3DV4 - SN3917, 2023-05-23	DAE4 Sn1369, 2023-05-23

Scans Setup	-	-
Scan	Area Scan	Zoom Scan
Grid Extents [mm]	40.0 x 90.0	30.0 x 30.0 x 30.0
Grid Steps [mm]	10.0 x 15.0	6.0 x 6.0 x 1.5
Sensor Surface [mm]	3.0	1.4
Graded Grid	N/A	Yes
Grading Ratio	N/A	1.5
MAIA	N/A	N/A
Surface Detection	VMS + 6p	VMS + 6p
Scan Method	Measured	Measured
Measurement Results	-	-
Scan	Area Scan	Zoom Scan
Date	2024-04-25, 15:56	2024-04-25, 16:01
psSAR1g [W/Kg]	2.51	2.44
psSAR10g [W/Kg]	1.66	1.60
Power Drift [dB]	0.01	-0.00
Power Scaling	Disabled	Disabled
TSL Correction	No correction	No correction
M2/M1 [%]	-	86.5
Dist 3dB Peak [mm]	-	> 15.0



D.1.21 2024-04-29, 07:30

Room Temp 22.0 deg.C / Liquid Temp 22.0 deg.C

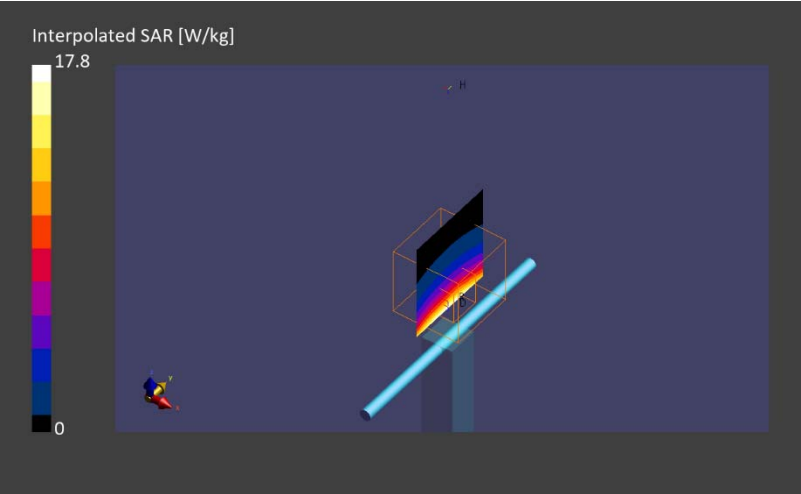
SAR1 Exposure Conditions

Phantom Section	Frequency [MHz]	Conversion Factor	TSL Permittivity	TSL Conductivity [S/m]
Flat	1750.000	8.49	40.1	1.37

Hardware Setup

Phantom	TSL, Measured Date	Probe, Calibration Date	DAE, Calibration Date
ELI V5.0 (20deg probe tilt) - 1203	HBBL-600-10000 Checked: 2024-Apr-29	EX3DV4 - SN3917, 2023-05-23	DAE4 Sn1369, 2023-05-23

Scans Setup	-	-
Scan	Area Scan	Zoom Scan
Grid Extents [mm]	40.0 x 90.0	30.0 x 30.0 x 30.0
Grid Steps [mm]	10.0 x 15.0	6.0 x 6.0 x 1.5
Sensor Surface [mm]	3.0	1.4
Graded Grid	N/A	Yes
Grading Ratio	N/A	1.5
MAIA	N/A	N/A
Surface Detection	VMS + 6p	VMS + 6p
Scan Method	Measured	Measured
Measurement Results	-	-
Scan	Area Scan	Zoom Scan
Date	2024-04-29, 07:24	2024-04-29, 07:30
psSAR1g [W/Kg]	9.57	9.36
psSAR10g [W/Kg]	5.11	4.95
Power Drift [dB]	0.02	0.02
Power Scaling	Disabled	Disabled
TSL Correction	No correction	No correction
M2/M1 [%]	-	82.1
Dist 3dB Peak [mm]	-	10.8



D.1.22 2024-04-29, 08:02

Room Temp 22.0 deg.C / Liquid Temp 22.0 deg.C

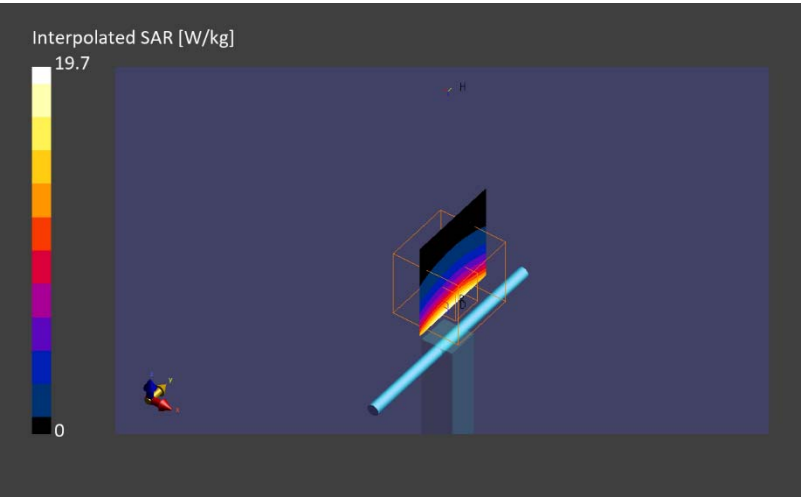
SAR1 Exposure Conditions

Phantom Section	Frequency [MHz]	Conversion Factor	TSL Permittivity	TSL Conductivity [S/m]
Flat	1900.000	8.21	39.8	1.46

Hardware Setup

Phantom	TSL, Measured Date	Probe, Calibration Date	DAE, Calibration Date
ELI V5.0 (20deg probe tilt) - 1203	HBBL-600-10000 Checked: 2024-Apr-29	EX3DV4 - SN3917, 2023-05-23	DAE4 Sn1369, 2023-05-23

Scans Setup	-	-
Scan	Area Scan	Zoom Scan
Grid Extents [mm]	40.0 x 90.0	30.0 x 30.0 x 30.0
Grid Steps [mm]	10.0 x 15.0	6.0 x 6.0 x 1.5
Sensor Surface [mm]	3.0	1.4
Graded Grid	N/A	Yes
Grading Ratio	N/A	1.5
MAIA	N/A	N/A
Surface Detection	VMS + 6p	VMS + 6p
Scan Method	Measured	Measured
Measurement Results	-	-
Scan	Area Scan	Zoom Scan
Date	2024-04-29, 07:57	2024-04-29, 08:02
psSAR1g [W/Kg]	10.7	10.3
psSAR10g [W/Kg]	5.53	5.31
Power Drift [dB]	0.00	0.01
Power Scaling	Disabled	Disabled
TSL Correction	No correction	No correction
M2/M1 [%]	-	82.5
Dist 3dB Peak [mm]	-	9.9



D.1.23 2024-04-30, 08:01

Room Temp 22.5 deg.C / Liquid Temp 22.5 deg.C

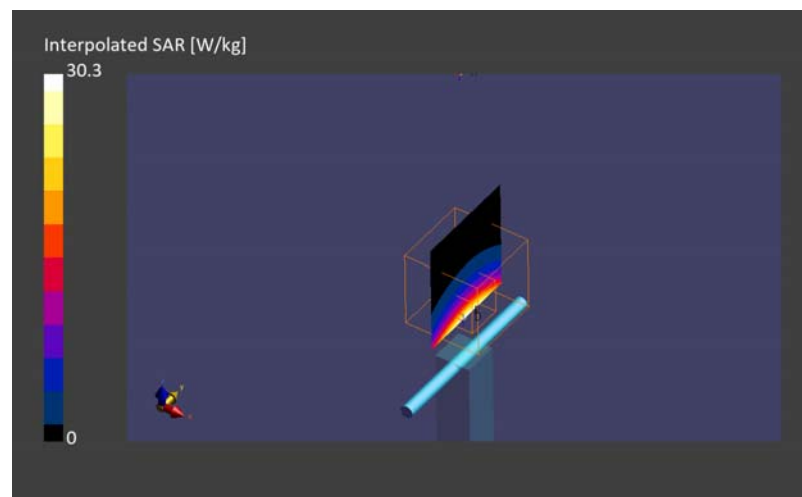
SAR1 Exposure Conditions

Phantom Section	Frequency [MHz]	Conversion Factor	TSL Permittivity	TSL Conductivity [S/m]
Flat	2600.000	7.47	39.1	2.01

Hardware Setup

Phantom	TSL, Measured Date	Probe, Calibration Date	DAE, Calibration Date
ELI V5.0 (20deg probe tilt) - 1203	HBBL-600-10000 Checked: 2024-Apr-30	EX3DV4 - SN3917, 2023-05-23	DAE4 Sn1369, 2023-05-23

Scans Setup	-	-
Scan	Area Scan	Zoom Scan
Grid Extents [mm]	40.0 x 80.0	30.0 x 30.0 x 30.0
Grid Steps [mm]	10.0 x 10.0	5.0 x 5.0 x 1.5
Sensor Surface [mm]	3.0	1.4
Graded Grid	N/A	Yes
Grading Ratio	N/A	1.5
MAIA	N/A	N/A
Surface Detection	VMS + 6p	VMS + 6p
Scan Method	Measured	Measured
Measurement Results	-	-
Scan	Area Scan	Zoom Scan
Date	2024-04-30, 07:54	2024-04-30, 08:01
psSAR1g [W/Kg]	13.8	13.6
psSAR10g [W/Kg]	6.18	6.07
Power Drift [dB]	-0.02	0.03
Power Scaling	Disabled	Disabled
TSL Correction	No correction	No correction
M2/M1 [%]	-	78.4
Dist 3dB Peak [mm]	-	9.1



D.2 Room: Ise Laboratory SAR#2

D.2.1 2024-04-25, 09:49
Room Temp 24.0 deg.C / Liquid Temp 23.5 deg.C

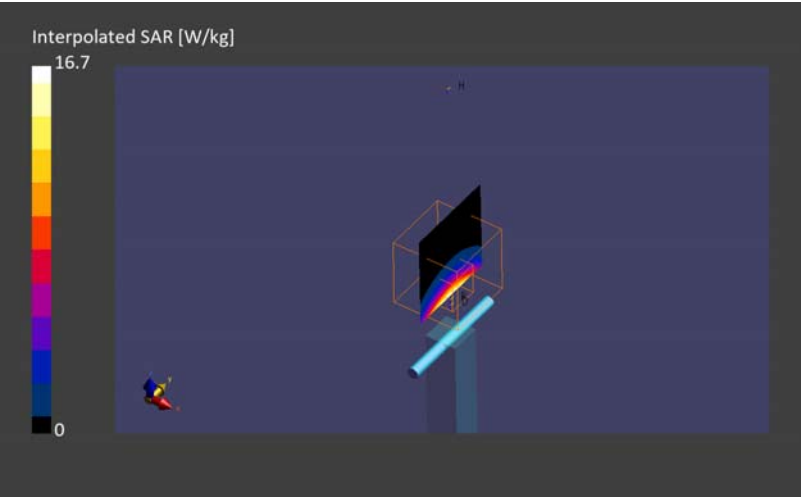
SAR2 Exposure Conditions

Phantom Section	Frequency [MHz]	Conversion Factor	TSL Permittivity	TSL Conductivity [S/m]
Flat	3500.000	6.71	38.5	2.67

Hardware Setup

Phantom	TSL, Measured Date	Probe, Calibration Date	DAE, Calibration Date
ELI V5.0 (20deg probe tilt) - 1207	HBBL-600-10000 Checked: 2024-Apr-25	EX3DV4 - SN3825, 2023-07-12	DAE4 Sn1372, 2024-03-12

Scans Setup	-	-
Scan	Area Scan	Zoom Scan
Grid Extents [mm]	40.0 x 80.0	28.0 x 28.0 x 28.0
Grid Steps [mm]	10.0 x 10.0	5.0 x 5.0 x 1.4
Sensor Surface [mm]	3.0	1.4
Graded Grid	N/A	Yes
Grading Ratio	N/A	1.5
MAIA	N/A	N/A
Surface Detection	VMS + 6p	VMS + 6p
Scan Method	Measured	Measured
Measurement Results	-	-
Scan	Area Scan	Zoom Scan
Date	2024-04-25, 09:42	2024-04-25, 09:49
psSAR1g [W/Kg]	6.44	6.60
psSAR10g [W/Kg]	2.44	2.50
Power Drift [dB]	0.02	0.02
Power Scaling	Disabled	Disabled
TSL Correction	Positive only	Positive only
M2/M1 [%]	-	76.6
Dist 3dB Peak [mm]	-	8.6



D.2.2 2024-04-26, 11:51

Room Temp 22.0 deg.C / Liquid Temp 21.5 deg.C

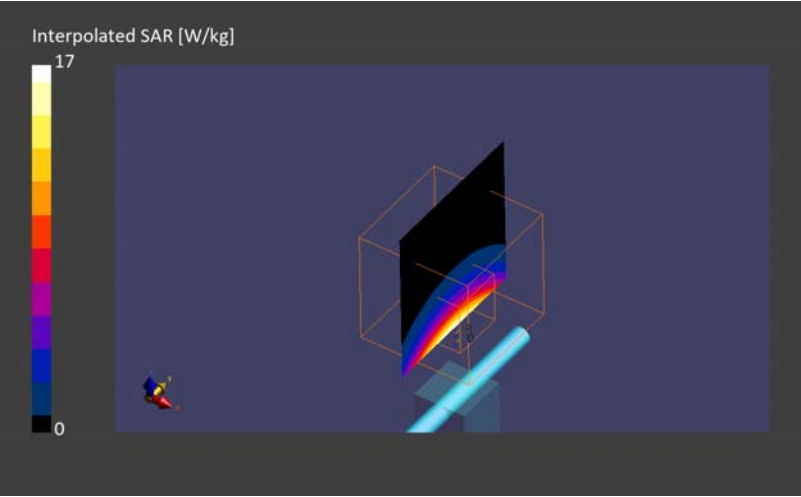
SAR2 Exposure Conditions

Phantom Section	Frequency [MHz]	Conversion Factor	TSL Permittivity	TSL Conductivity [S/m]
Flat	3500.000	6.71	38.0	2.66

Hardware Setup

Phantom	TSL, Measured Date	Probe, Calibration Date	DAE, Calibration Date
ELI V5.0 (20deg probe tilt) - 1207	HBBL-600-10000 Checked: 2024-Apr-26	EX3DV4 - SN3825, 2023-07-12	DAE4 Sn1372, 2024-03-12

Scans Setup	-	-
Scan	Area Scan	Zoom Scan
Grid Extents [mm]	40.0 x 80.0	28.0 x 28.0 x 28.0
Grid Steps [mm]	10.0 x 10.0	5.0 x 5.0 x 1.4
Sensor Surface [mm]	3.0	1.4
Graded Grid	N/A	Yes
Grading Ratio	N/A	1.5
MAIA	N/A	N/A
Surface Detection	VMS + 6p	VMS + 6p
Scan Method	Measured	Measured
Measurement Results	-	-
Scan	Area Scan	Zoom Scan
Date	2024-04-26, 11:44	2024-04-26, 11:51
psSAR1g [W/Kg]	6.69	6.62
psSAR10g [W/Kg]	2.52	2.50
Power Drift [dB]	0.02	-0.08
Power Scaling	Disabled	Disabled
TSL Correction	Positive only	Positive only
M2/M1 [%]	-	75.6
Dist 3dB Peak [mm]	-	8.6



D.3 Room: Ise Laboratory SAR#3

D.3.1 2024/04/23 7:55:42

Communication System info

Communication System: UID 0, #CW (0)

Communication System Band: D1900 (1900.0 MHz) Duty Cycle: 1:1

Measurement Standard: DASY5 (IEEE/IEC/ANSI C63.19-2007)

Probe info:

Probe: EX3DV4 - SN3917 / Calibrated: 2023/05/23

ConvF(8.21, 8.21, 8.21) @ 1900 MHz

Medium parameters used: $f = 1900$ MHz; $\sigma = 1.398$ S/m; $\epsilon_r = 39.555$; $\rho = 1000$ kg/m³

Sensor-Surface: 1.4mm (Mechanical Surface Detection), Sensor-Surface: 0mm (Fix Surface)

DAE info:

Electronics: DAE4 Sn509 / Calibrated: 2023/08/04

Phantom info:

Phantom: ELI v4.0 (20deg probe tilt)/Phantom section: Flat Section

Type: QDOVA001BB

Serial: TP:1045

Software info DASY52 52.10.4(1535) SEMCAD X 14.6.14(7501)

Pin/250mW/Area Scan (61x61x1): Interpolated grid: dx=1.500 mm, dy=1.500 mm

Maximum value of SAR (interpolated) = 16.0 W/kg

Pin/250mW/Zoom Scan (7x7x7)/Cube 0: Measurement grid: dx=5mm, dy=5mm, dz=5mm

Reference Value = 107.3 V/m; Power Drift = 0.01 dB

Peak SAR (extrapolated) = 18.4 W/kg

SAR(1 g) = 9.91 W/kg; SAR(10 g) = 5.17 W/kg

Smallest distance from peaks to all points 3 dB below = 10 mm

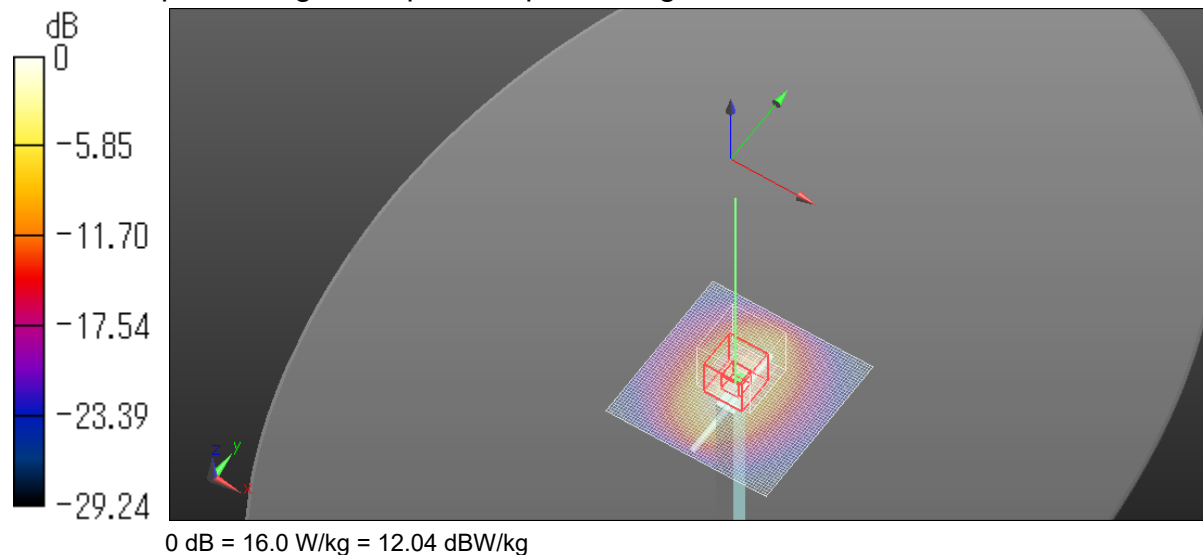
Ratio of SAR at M2 to SAR at M1 = 54.2%

Maximum value of SAR (measured) = 15.4 W/kg

Pin/250mW/Z Scan (1x1x31): Measurement grid: dx=20mm, dy=20mm, dz=5mm

Maximum value of SAR (measured) = 8.34 W/kg

Room Temp 22.5 deg.C / Liquid Temp 22.5 deg.C



SAR(x,y,z,f0)

