

1

2

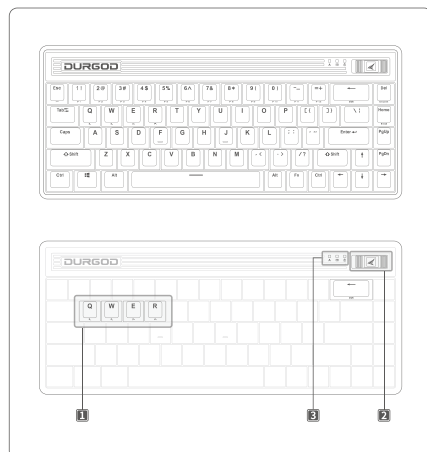
3

4

5

6

ABOUT DEVICE



01 / SHORTCUT KEYS

	Fn + Q	Switch to Bluetooth device 1
	Fn + W	Switch to Bluetooth device 2
	Fn + E	Switch to 2.4GHz wireless connection mode
	Fn + R	Switch to USB connection mode
	Fn + Backspace	Invoke the on-board configuration profile

02 / WIRELESS SWITCH



03 / INDICATOR LIGHTS

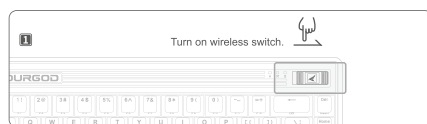
Indicator Light	Normal Indicator Status *	Wireless Connection Status Indicator **
	Cass lock indicator	Bluetooth device 1 connection status indicator
	Configuration profile indicator	Bluetooth device 2 connection status indicator
	Battery indicator	2.4GHz wireless connection status indicator

- * When FUSION is successfully connected and functions normally, the indicators lights should also work normally.
- ** When FUSION pairing is available, the corresponding indicator light flashes quickly.
- When FUSION is paired but cannot connect, the corresponding indicator light flashes slowly. Please check if the device to be connected is functioning normally.
- When FUSION is successfully connected, the corresponding indicator light will be on for 3 seconds and then revert back to the normal indicator status.

CONNECTION SPECIFICATIONS

KEYBOARD	
BLUETOOTH	Frequency range:2402MHz-2480MHz Transmitter power: < 1dBm
2.4GHz WIRELESS	Frequency range:2402MHz-2480MHz Transmitter power: < 3.5dBm
RECEIVER	
2.4GHz WIRELESS	Frequency range:2402MHz-2480MHz Transmitter power: < 3.5dBm

BLUETOOTH CONNECTION

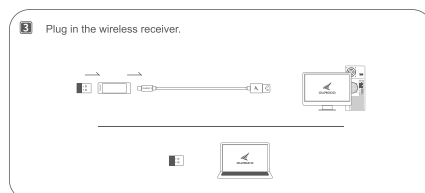
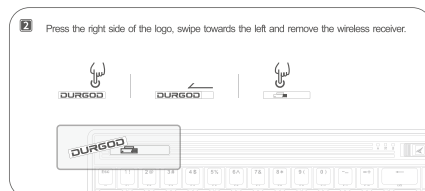
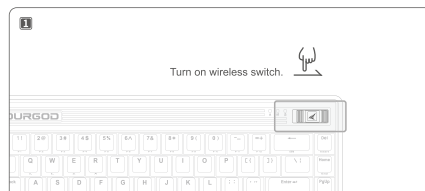


- 1. Bluetooth 1
- 2. Bluetooth 2

Enter Bluetooth mode by pressing FN+Q/W.

The corresponding indicator light flashes quickly upon initial use. Search for FUSION on a device that supports Bluetooth low energy technology and complete the pairing according to the on-device prompts. The corresponding indicator light will be on for 3 seconds and then revert back to the normal indicator status. If re-pairing is needed, long press FN+Q/W for 3 seconds until the indicator light flashes quickly, and then users can proceed with re-pairing.

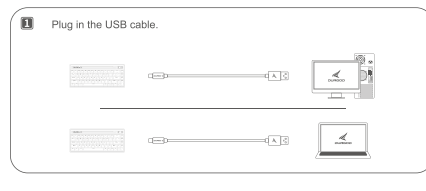
2.4GHz WIRELESS CONNECTION



- 1. Bluetooth 1
- 2. Bluetooth 2

Press FN+E to enter 2.4GHz wireless connection mode, after which the device will connect automatically. The indicator light will be on for 3 seconds and then revert back to the normal indicator status.

USB WIRED CONNECTION



- 1. USB 1
- 2. USB 2

Press FN+R to enter USB wired connection mode.

LEARN MORE

Check out www.durgod.com and download "Durgod Zeus Engine" to get:

- The latest firmware updates
- Entire key customization
- Macro editing function
- On-board and cloud storage of configuration profiles
- The latest information on Durgod products



Zhuohai Hoki Technology Co., Ltd.
Room 801, Building A, Hoki Technology & Industry Park, Xiangzhou District, Zhuhai City, China
Service Email: sales@durgod.com Support Email: support@durgod.com

Copyright © 2017 Zhuohai Hoki Technology Co., Ltd. All rights reserved. All copyrights or trademarks are the property of their respective owners. This manual is for reference only and does not constitute any form of contract.

REGULATORY AND COMPLIANCE INFORMATION

FCC STATEMENT

This equipment has been tested and found to comply with the limits for a Class B digital device, pursuant to part 15 of the FCC Rules. These limits are designed to provide reasonable protection against harmful interference in a residential installation. This equipment generates uses and can radiate radio frequency energy and, if not installed and used in accordance with the instructions, may cause harmful interference to radio communication. However, there is no guarantee that interference will not occur in a particular installation. If this equipment does cause harmful interference to radio or television reception, which can be determined by turning the equipment off and on, the user is encouraged to try to correct the interfere by one or more of the following measures:

- Reorient or relocate the receiving antenna.
- Increase the separation between the equipment and receiver.
- Connect the equipment into an outlet on a circuit different from that to which the receiver is connected.
- Consult the dealer or an experienced radio/TV technician for help.

FCC Radiation Exposure Statement

This device complies with FCC radiation exposure limits set forth for an uncontrolled environment and it also complies with Part 15 of the FCC RF Rules. This equipment must not be co-located or operating in conjunction with any other antenna or transmitter. End-users and installers must be provide with antenna installation instructions and consider removing the no collocation statement.

This device complies with Part 15 of the FCC Rules. Operation is subject to the following two conditions:

- (1) This device may not cause harmful interference, and
- (2) This device must accept any interference received, including interference that may cause undesired operation.

CAUTION!

Any changes or modifications not expressly approved by the party responsible for compliance could void the user's authority to operate the equipment.

STATEMENT OF COMPLIANCE WITH EU DIRECTIVE

Hereby, Zhuohai Hoki Technology LTD.,CO declares that the radio equipment type DURGOD K230 Wireless Mechanical Keyboard is in compliance with Directive 2014/53/EU. The full text of the EU declaration of conformity is available at the following internet address: <http://www.durgod.com>

CAUTION:

- (1) Risk of fire or explosion or defeat the safeguard of equipment if the battery is replaced by an incorrect type. Replace only with the same or equivalent type.
- (2) Disposal of a battery into fire or a hot oven, or mechanically crushing or cutting of a battery, that can result in an explosion.
- (3) High or low extreme temperatures or low air pressure at high altitude that the battery can be subjected to during use, storage or transportation.
- (4) Leaving the battery in an extremely high temperature and/or low air pressure surrounding environment that can result in an explosion or the leakage of flammable liquid or gas.

保修服务卡

产品型号	
购买日期	
用户姓名	
联系电话	
通讯地址/邮编	
产品S/N码	

质量检验合格



厂商:珠海市学思电子科技有限公司
地址:珠海市香洲区南屏科技园屏北一路6号南翔丰大厦8楼

保修服务指南

感谢您对DURGOD(杜伽)的信任与支持

DURGOD将为您提供一年的产品免费保修服务,请勿擅自涂改本保修服务卡,以维护您的合法权益。如需服务或技术支持,请咨询相关经销商或与我们联系。

我们承诺

对保修期间内在保修服务范围内的产品,DURGOD将按照本服务政策进行维修。更换或退货在合理的时间免费为您恢复产品的正常使用功能;对超出保修期和保修服务范围之外的产品,DURGOD将按照本服务政策提供有偿维修服务。

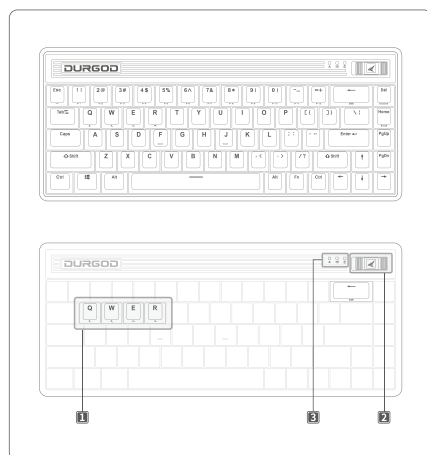
保修服务时须提供

- 申请保修的DURGOD产品或附件。
- 有效的购买凭证。

质保不包含一下原因导致的问题和损坏:

- 产品正常使用磨损。
- 由于人为原因造成的损坏,包括但不限于因跌落、挤压、碰撞造成的损坏,因液体泼洒、化学品腐蚀、异物进入内部造成的损坏。
- 因使用、保养、维护不当造成的损坏。
- 产品被任何未经授权方拆除、维修、批号去除、涂改至难以辨认等。
- 产品超出保修期。
- 因不可抗力损坏。

了解设备



01 / 快捷键

	Fn + Q	切换蓝牙设备 1
	Fn + W	切换蓝牙设备 2
	Fn + E	切换2.4G无线模式
	Fn + R	切换USB模式
	Fn + Backspace	调用板载配置文件

02 / 无线开关



03 / 指示灯

指示灯	正常指示状态 *	无线功能状态 **
	大小写指示灯	蓝牙设备1 连接状态指示灯
	配置文件指示灯	蓝牙设备2 连接状态指示灯
	电量指示灯	2.4G 无线连接状态指示灯

- * 当FUSION成功连接设备并有正常使用时,指示灯进入正常指示状态。
- ** 对应连接模式在已配对设备无法连接状态时,指示灯闪烁。
- 对应连接模式在已配对设备无法连接状态时,指示灯闪烁,此时请检查对应的连接设备是否正常工作。
- 对应连接模式在连接上时,指示灯常亮3秒后,进入正常指示状态。

连接参数

键盘	
蓝牙	频率范围:2402MHz-2480MHz 发射功率:< 1dBm
2.4GHz无线	频率范围:2402MHz-2480MHz 发射功率:< 3.5dBm
接收器	
2.4GHz无线	频率范围:2402MHz-2480MHz 发射功率:< 3.5dBm

蓝牙设备连接

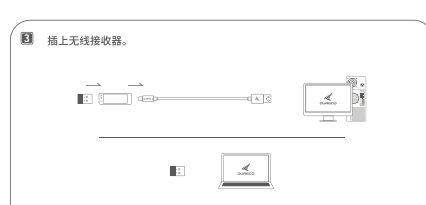
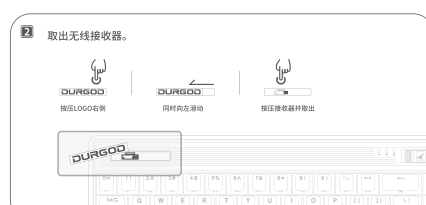


- 1. Bluetooth 1
- 2. Bluetooth 2

FN+Q / W进入蓝牙模式。

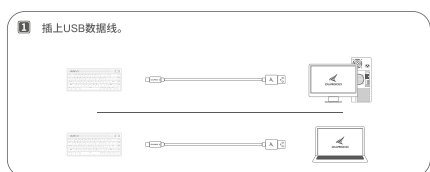
将设备接入蓝牙模式,对应的指示灯快闪。在支持蓝牙低功耗技术的设备上连接设备,根据设备提示完成配对,对应指示灯常亮3秒后恢复正常指示状态。如需重新配对,长按FN+Q/W 3秒直至对应指示灯快闪,则可重新进行配对。

2.4G 无线连接



将设备接入2.4G无线模式,设备自动完成连接,对应指示灯常亮3秒后恢复正常指示状态。

USB有线连接



- 1. USB 1
- 2. USB 2

FN+R进入USB模式。

获取更多

访问[Http://www.durgod.com](http://www.durgod.com),下载DURGOD ZEUS ENGINE,您将获得:

- 最新的固件升级
- 全键自定义
- 宏编程功能
- 配置文件云端存储与云存储
- 最新的产品资讯



珠海市学思电子科技有限公司
珠海市香洲区南屏科技园屏北一路6号南翔丰大厦8楼
客服电话:400-078-3333
邮箱地址: sales@durgod.com 技术支持: support@durgod.com

版权所有 © 2017 珠海市学思电子科技有限公司。保留一切权利。未经授权擅自复制或传播本手册内容,属于侵权行为,将依法追究法律责任。

六折页 含保修卡

尺寸: 68X125(h)mm

