

Label size = 1.50" x 1.00"

### Schlage Lock Company

#### Model # FE789WB

This device complies with Part 15 of the FCC Rules.

Operation is subject to the following two conditions:

- 1) this device may not cause harmful interference, and
- 2) this device must accept any interference received, including interference that may cause undesired operation.

FCC ID: XPB-SMLEVER  
IC: 8053B-SMLEVER



### Schlage Lock Company

#### Model # FE789WBC

This device complies with Part 15 of the FCC Rules.

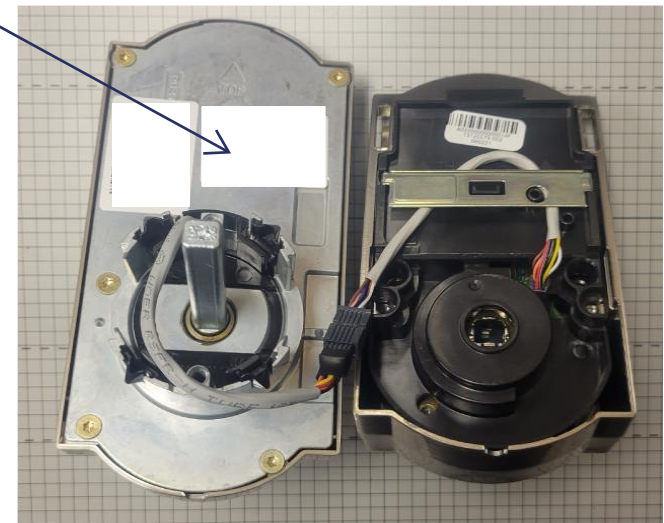
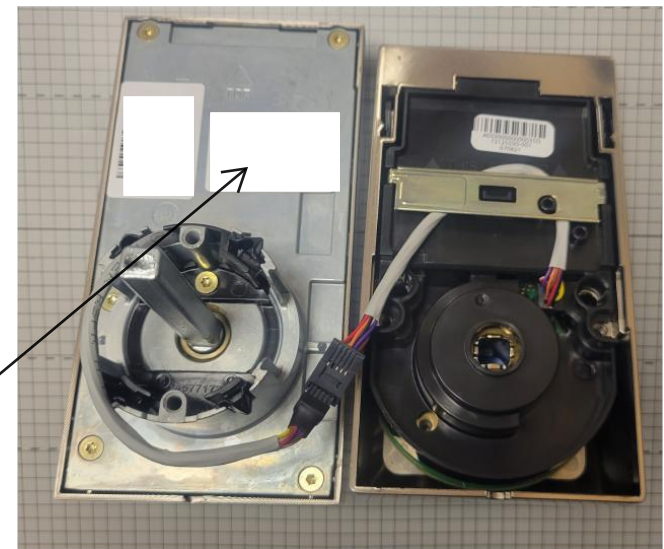
Operation is subject to the following two conditions:

- 1) this device may not cause harmful interference, and
- 2) this device must accept any interference received, including interference that may cause undesired operation.

FCC ID: XPB-SMLEVER  
IC: 8053B-SMLEVER



**LABEL LOCATION**



Printing: 1-color ■ Black

Revision History						Revision Description: B> Updated FCC ID and IC							
A	B	C	D	E	F								
089027	093829	EC #	EC #	EC #	EC #								
Material  See part number 23539778						Edited By		Approved By		EC Number	Release Date		
Notes 1. Use blank label number 23539778. 2. Characters in <b>red font</b> are variable content that will need to be determined by manufacturing.						Title Label, FE789, Outside							
						Creation Date 02-15-21		Number 47378642				Revision B	
						Created By D Salvetti		Activity 3899 Hancock Expwy Security, CO 80911		Schlage Lock Company Copyright © 2022			
						Software: Illustrator CC							