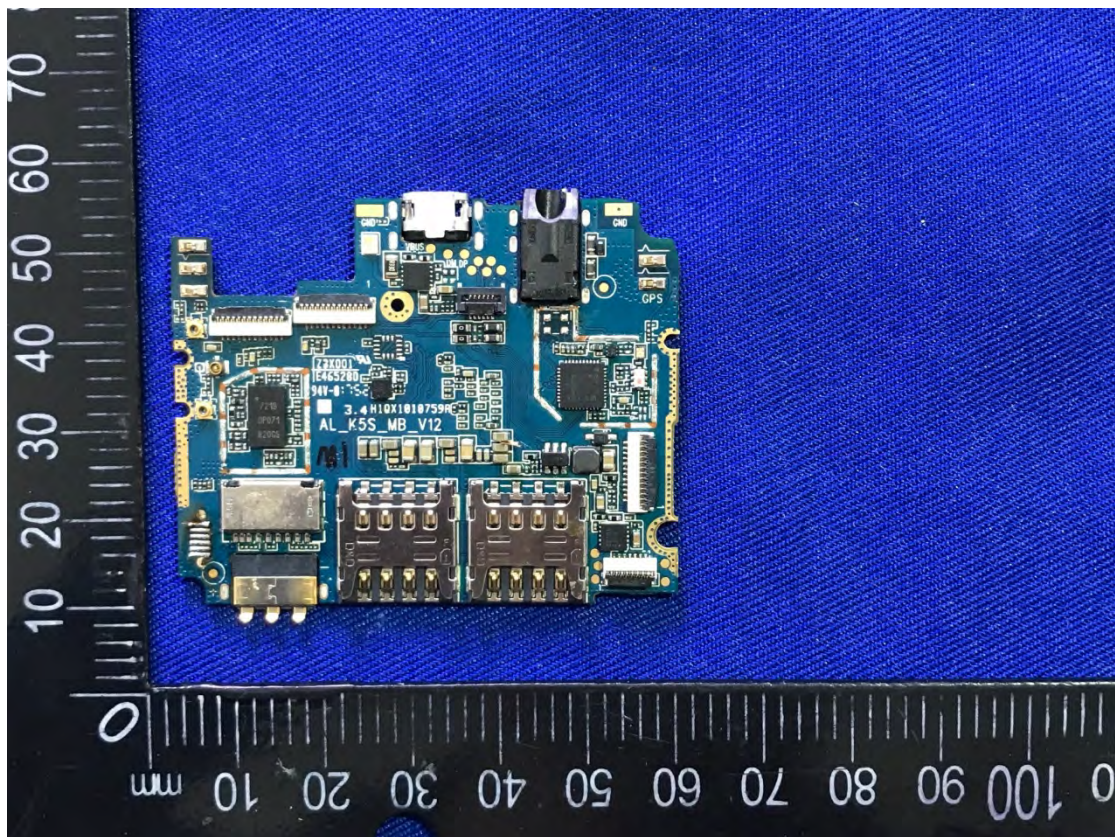
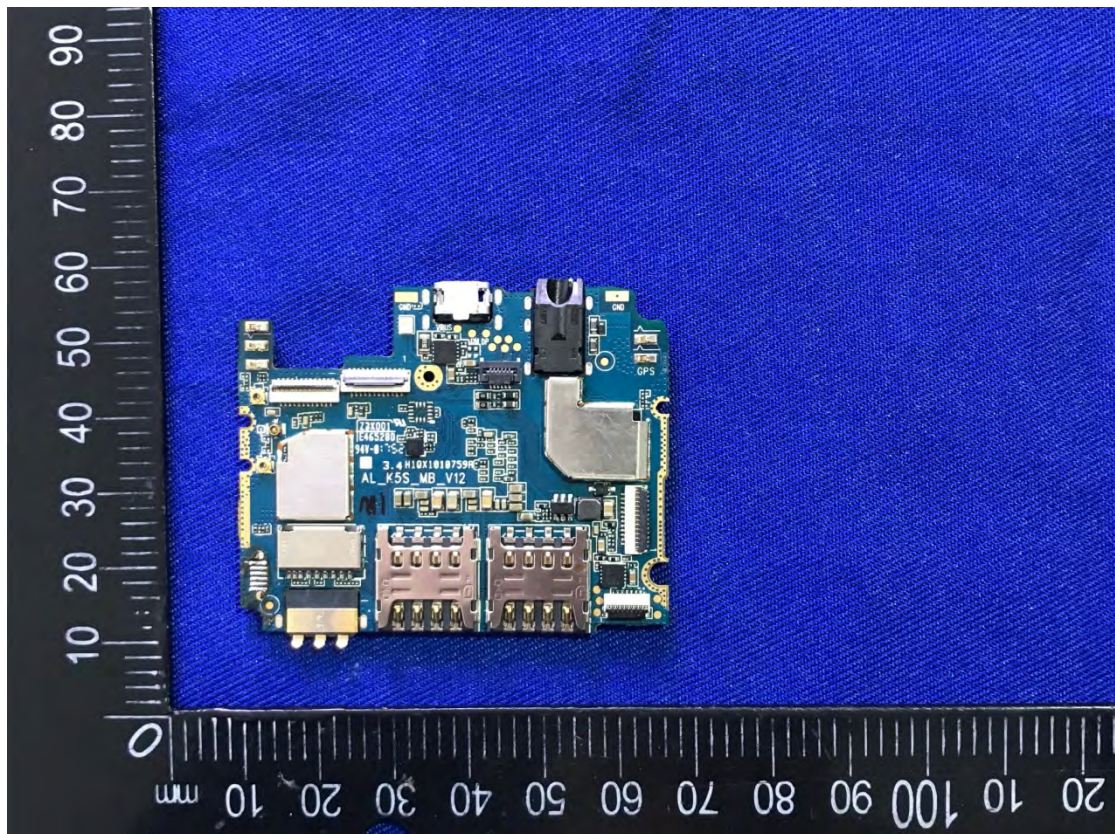


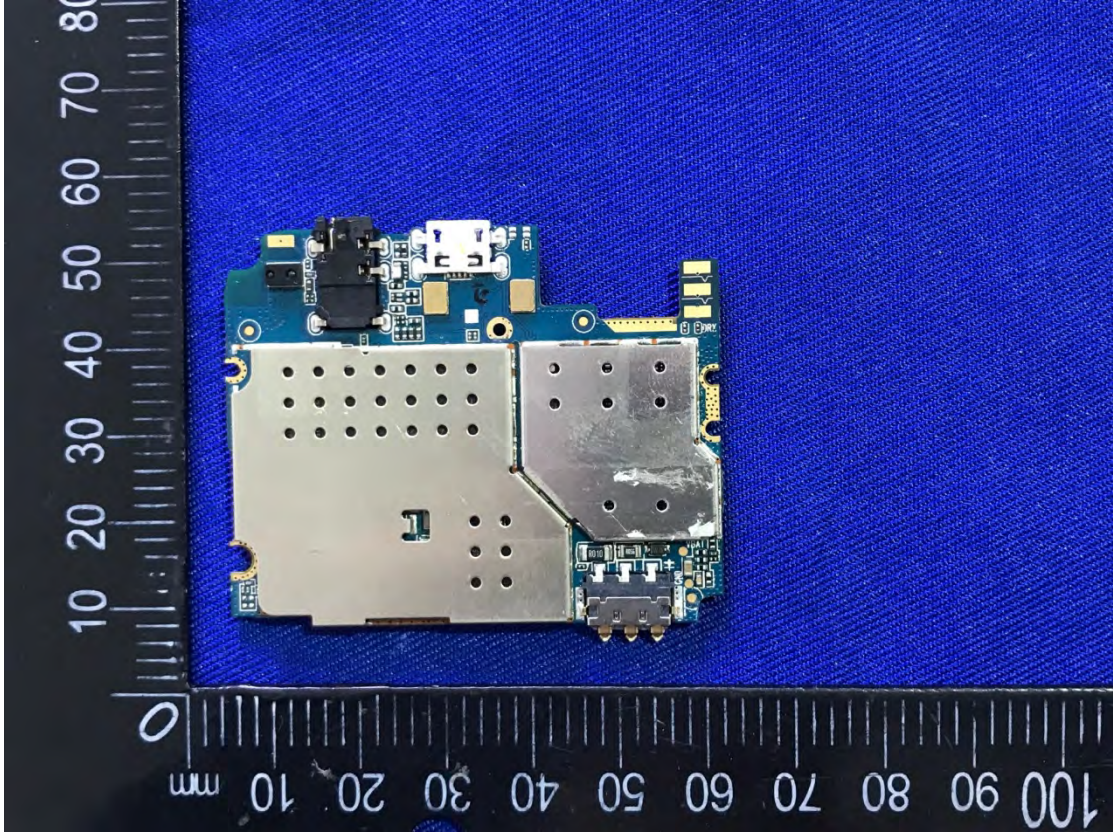
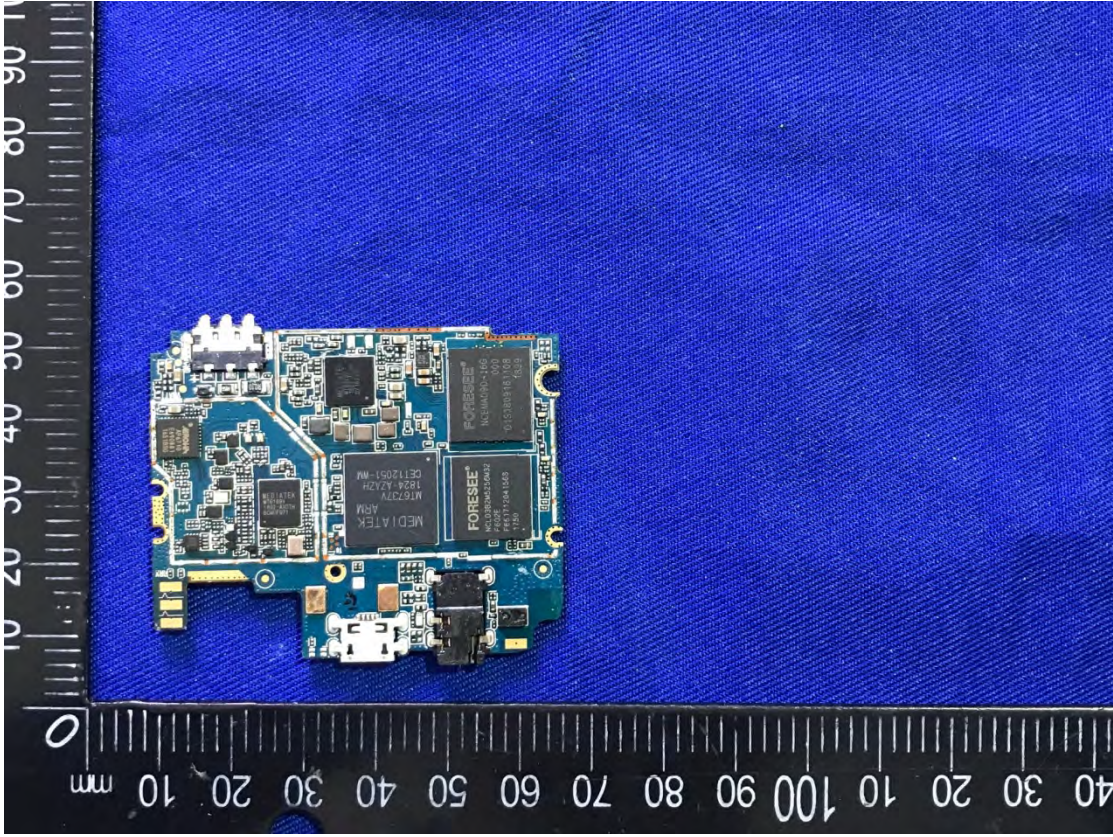
## EXHIBIT C – EUT INTERNAL PHOTOGRAPHS



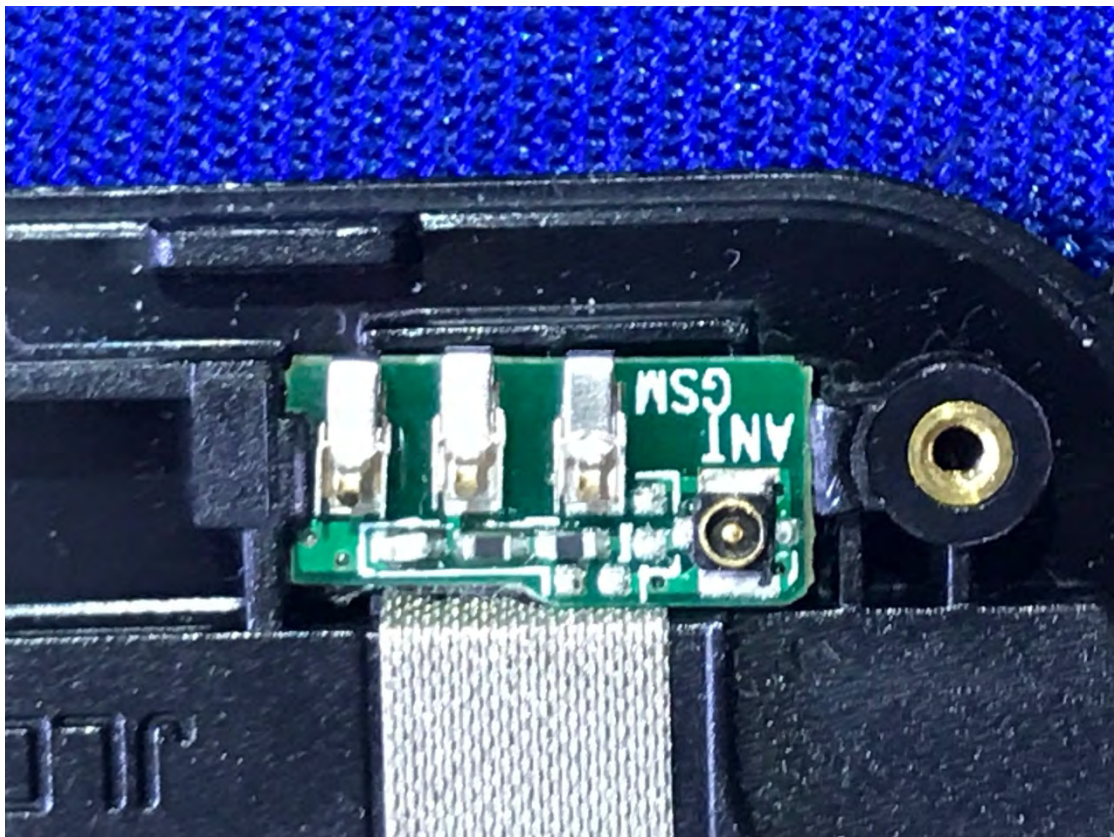
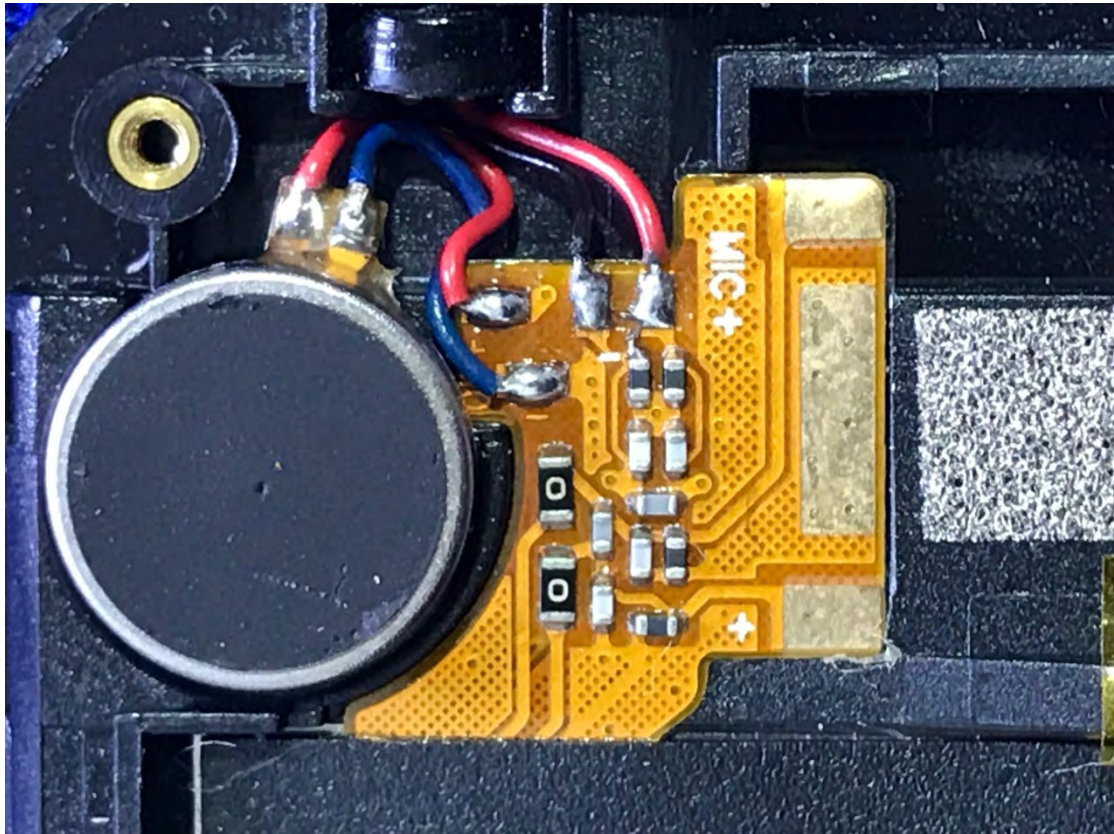














A close-up photograph of a MediaTek MT6737V processor mounted on a blue printed circuit board (PCB). The processor is a dark, square chip with the following text printed on it: "MEDIATEK", "ARM", "MT6737V", "1824-AZAZH", and "CET12051-WM". To the left of the processor, a black component is labeled "FORESEE®". To the right, another black component is labeled "MEDIATEK", "MT6169V", "1802-AXDTH", and "BCMCF971". The PCB features various other components, including capacitors, resistors, and a yellow circular pad at the top. A silver solder joint is visible on the right side of the processor.

A close-up photograph of the bottom edge of a black mobile phone. The phone is resting on a blue, textured fabric surface. The bottom edge features a silver-colored metal plate with two circular ports on the left and a rectangular speaker grille on the right. Printed on the metal plate are the technical specifications: "GSM850/2/4/5&FDD2/4/5/12/25/20/41" and "WCDMA0/1/10-V1.0".

GSM850/2/4/5&FDD2/4/5/12/25/20/41  
WCDMA0/1/10-V1.0



**LTE DIV Antenna View**

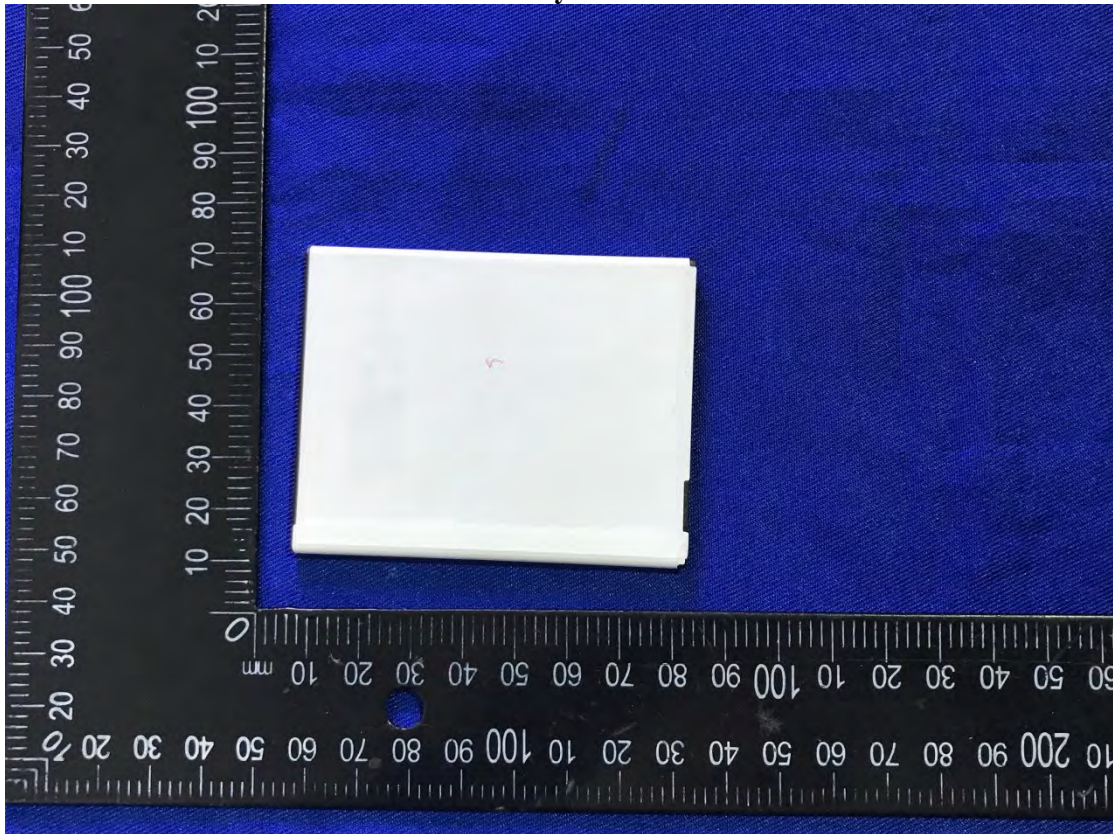


**BT&WIFI&GPS Antenna View**





Battery View



Battery Label View

