

## Knowledge of HD III

The HD III works as a vehicle communication interface device, which is used to read the vehicle data and then send it to the diagnostic tool via Bluetooth /Wi-Fi communication or USB connection. The LED indicators enable you to easily identify the working status of the HD III.

### Technical parameters:

- Working voltage: 9-36VDC
- Working temp.: -10°C-55°C
- Wi-Fi module: HLK-RM08K
  - Frequency range: 2412-2472MHz
  - Transmit power: 19.29dBm
- Bluetooth module: YG-218M-A2
  - Frequency range: 2402-2480MHz
  - Transmit power: 16.62dBm

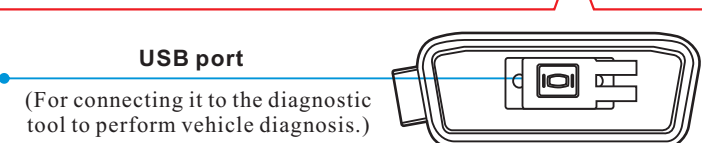
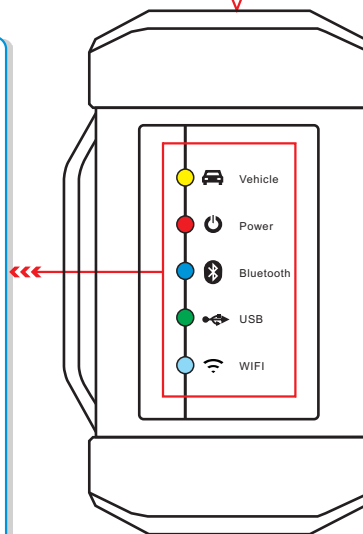
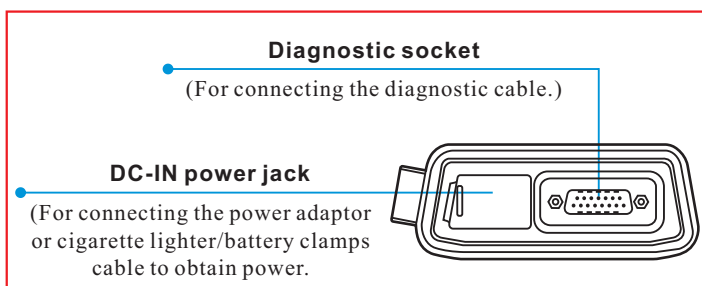
Frequency ranges of Bluetooth and Wi-Fi can be used in Europe without restriction.

### LED Indicators

Displays the working status. It is defined as follows:

1. **Vehicle:** While the HD III is communicating with the vehicle, the indicator lights up and flashes. Otherwise, it will not illuminate.
2. **Power:** It illuminates solid red when the HD III is powered on.
3. **Bluetooth:** Blue indicates the HD III is working in Bluetooth mode.
4. **USB:** It lights up when the HD III is connected to the diagnostic tool via USB cable.
5. **Wi-Fi:**
  - Blue indicates the HD III is in wireless AP(access point) mode and works as a Wi-Fi hotspot.
  - When the HD III works in wireless client mode, it illuminates Blue & red.

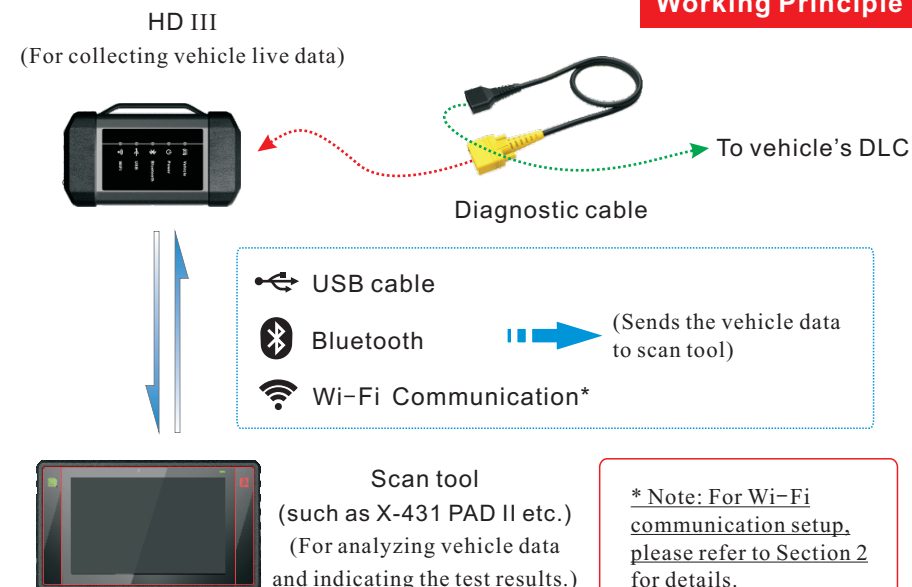
Note: Before plugging/unplugging the diagnostic cable or adaptor cable, please turn the ignition off first.



## Accessory Checklist

HD III	Diagnostic cable	USB cables
(For accessing vehicle live data)	(To connect the HD III and diagnostic tool to perform vehicle diagnosis.)	(To connect the HD III to the diagnostic tool with different type of USB port.)
Cigarette lighter	Battery clamps cable	Adaptor cable kit
(To supply power to the HD III through connection to cigarette lighter receptacle.)	(To supply power to the HD III through connection to vehicle's battery.)	(For different vehicle diagnostic socket, it may be necessary to use one of the adaptor cables included within the kit.)
Power adaptor	Password envelope	
(To supply power to the HD III through AC outlet.)	(A piece of paper bearing S/N and Activation Code, which is needed for your registration.)	

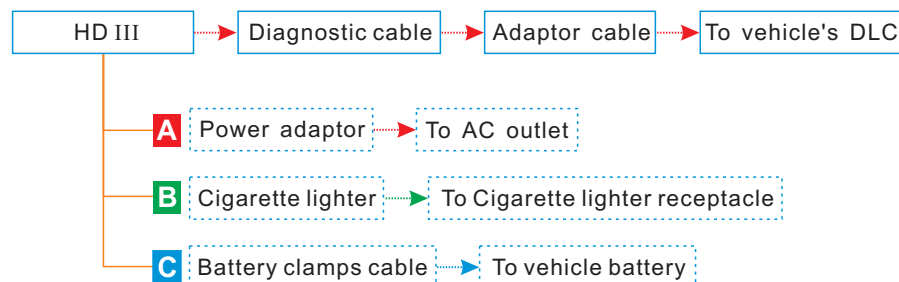
## Working Principle



## 1 Vehicle Connection

1. Locate the vehicle's DLC: The DLC (Data Link Connector) is typically a connector where diagnostic code readers interface with the vehicle's on-board computer. The DLC location varies from vehicle to vehicle. It is generally located in driver's cab. If no DLC is found, please refer to Automobile Repair Manual.
2. Switch the ignition on.
3. For vehicles equipped with OBD II management system, plug one end of the diagnostic cable into the vehicle's DLC, and the other end into the diagnostic socket of the HD III, and then tighten the captive screws.

For vehicles not equipped with OBD II management system, it is necessary to use the corresponding adaptor cable, and then follow one of the methods below to make connection:



4. To perform vehicle diagnosis via USB cable, connect the B-shaped terminal of the USB cable to the HD III and other end to the USB port of the scan tool.

## 2 Wi-Fi Communication Setup

To establish the Wi-Fi communication between the HD III and scan tool, proceed the following steps:

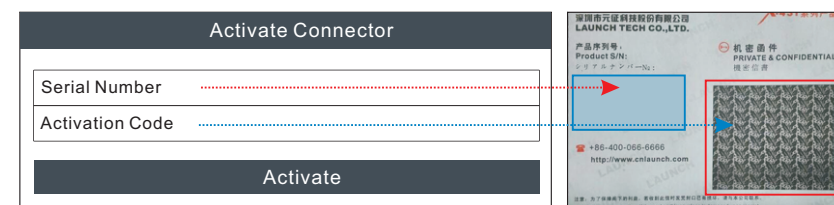
1. Follow the steps mentioned in Section 1 to make connection.
2. Power the scan tool on and launch the application.
3. After logging successfully, tap -> "Profile" -> "Connector communication manager" -> select "Use Wi-Fi communication", a pull-down option list appears:
  - Work as Wi-Fi hotspot: Once enabled, the HD III and scan tool forms a LAN network to make communication. In this case, the scan tool can not surf the Internet.
  - Work as network adaptor: Once enabled, a Wi-Fi connection dialog box appears. Input the Wi-Fi network name and access password until it is properly connected. In this case, the scan tool can surf the Internet and communicate with HD III.

## 3 Activate HD III & Download Software

If you had a diagnostic tool of 12V passenger car configuration and intend to experience the diagnosis of commercial vehicles, follow the steps described below to activate the HD III:

Note: Please make sure that the diagnostic tool is properly connected to the Internet before proceeding this step.

1. Launch the application, then tap -> "Profile" / "My Data" -> "Activate Connector".

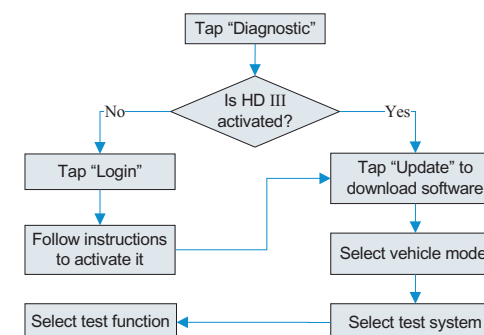


2. Input the Product S/N and Activation Code, which can be obtained from the included Password Envelope, then tap "Activate" to activate the HD III.
3. Tap "Update" to enter update center, tap "Update" to download and install it.

## 4 Start Diagnostics

Follow the sequence below to start a new diagnostic session.

Note: Pictures illustrated herein are for reference purpose only and this Quick Start Guide is subject to change without prior written notice.



1. Manufacturers shall ensure that radio equipment shall be so constructed that it can be operated in at least one Member State without infringing applicable requirements on the use of radio spectrum.
2. In cases of restrictions on putting into service or of requirements for authorisation of use, information available on the packaging shall allow the identification of the Member States or the geographical area within a Member State where restrictions on putting service or requirements for authorisation of use exist. Such information shall be completed in the restrictions accompanying the radio equipment. The Commission may adopt implementing acts specifying how to present that information. Those implementing acts shall be adopted in accordance with the advisory procedure referred to in Article 45(2).

## **FCC Warning:**

Any changes or modifications not expressly approved by the party responsible for compliance could void the user's authority to operate the equipment.

This device complies with Part 15 of the FCC Rules. Operation is subject to the following two conditions:

- (1) This device may not cause harmful interference, and
- (2) This device must accept any interference received, including interference that may cause undesired operation.

Note: This equipment has been tested and found to comply with the limits for a Class B digital device, pursuant to part 15 of the FCC Rules. These limits are designed to provide reasonable protection against harmful interference in a residential installation. This equipment generates, uses and can radiate radio frequency energy and, if not installed and used in accordance with the instructions, may cause harmful interference to radio communications. However, there is no guarantee that interference will not occur in a particular installation. If this equipment does cause harmful interference to radio or television reception, which can be determined by turning the equipment off and on, the user is encouraged to try to correct the interference by one or more of the following measures:

- Reorient or relocate the receiving antenna.
- Increase the separation between the equipment and receiver.
- Connect the equipment into an outlet on a circuit different from that to which the receiver is connected.
- Consult the dealer or an experienced radio/TV technician for help.

This equipment complies with FCC radiation exposure limits set forth for an uncontrolled environment. This equipment should be installed and operated with minimum distance 20cm between the radiator & your body.

.文档大小：原始文档为A4纸张（宽297mm x 高210mm），按照1:1输出

材质要求：157G双铜

印刷要求：彩色印刷