

Dimmer Switch User Guide

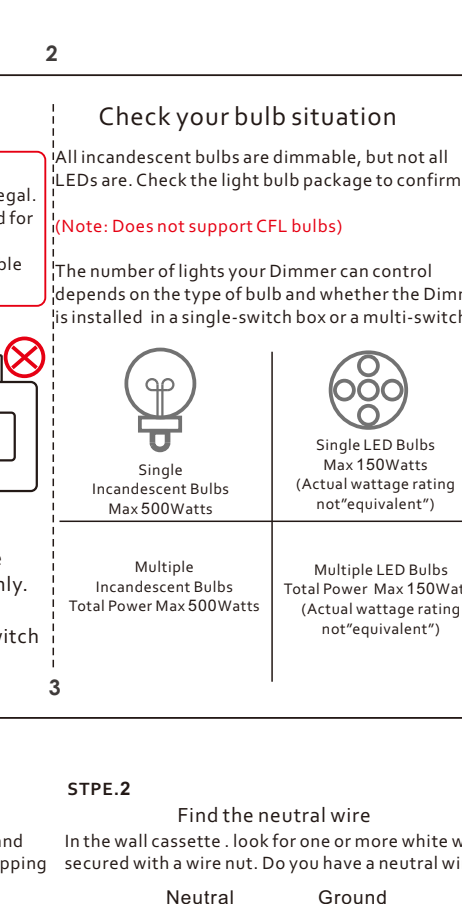
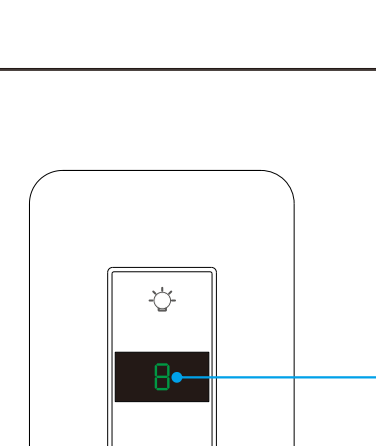
KS-7011

Notes Before Installation

1. Wi-Fi Only support a 2.4GHz network (802.11b/g/n)
2. Only support one way/single pole circuit, Not compatible with 3-way
3. Neutral wire Required.
4. Basic electrical wiring knowledge or experience required, or please consult a professional electrician
5. Never connect the neutral wire to any switch wires
6. ON/OFF Button also can be used as reset button, long press to reset your dimmer switch to factory defaults. Only do this if you are sure you want to erase all your settings

2

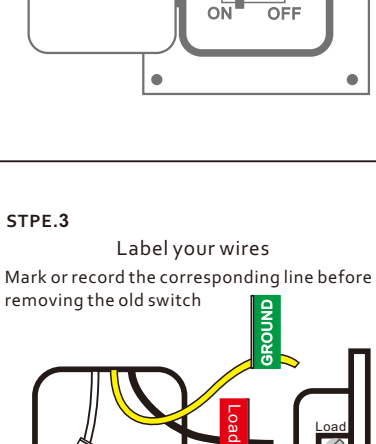
Smart Home



Specifications

Type	Dimmer Switch
Model	KS-7011
Power supply mode	Neutral+Live Wire
Rated Voltage	AC120V 60Hz
Rated Power	INC 600W LED 150W
Wireless Frequency	2412-2480GHz
Wireless Standard	IEEE802.11 b/g/n
Product Size	Face plate: 123mmx44mmx4.5mm Product: 104x42x29mmx4.0mm 17x1.8 33x0.5

1



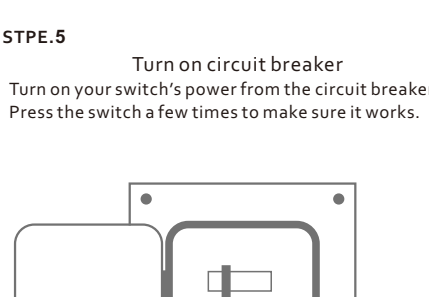
Digital Display Meaning

Status	Description
I...H	Represents the brightness level ("I" :Represents the minimum brightness) ("H" :Represents the maximum brightness)
8	Rapidly blink means you are in "Default Mode"
A	Slowly blink means you are in "AP Mode"
L	Represents successful connection
-	Represents failure connection
0	Represents power OFF

2

Before you install

WARNING! RISK OF ELECTRIC SHOCK.
Incorrect installation could be dangerous or illegal. Multiple breakers may need to be de-energized for safe installation. Please call a professional electrician if you are unfamiliar or uncomfortable with electrical work.

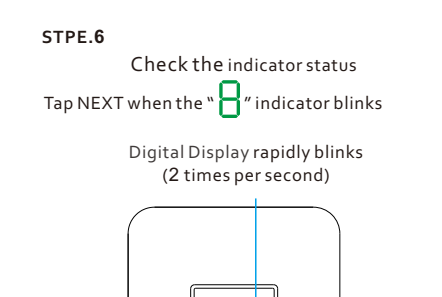


Make sure your wiring is compatible. The Dimmer replaces single-pole switches only. If your light can be turned on from two different wall switches, that's a 3-way switch and this Dimmer is not compatible

3

Check your bulb situation

All incandescent bulbs are dimmable, but not all LEDs are. Check the light bulb package to confirm
(Note: Does not support CFL bulbs)



3

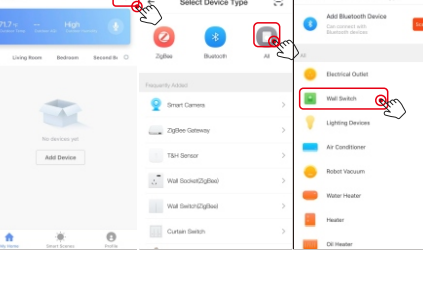
Installation Guide

STPE.1 Turn off circuit breaker
Find your light's control in your circuit breaker and turn it off. Then make sure the power is off by flipping your switch a few times.



STPE.2

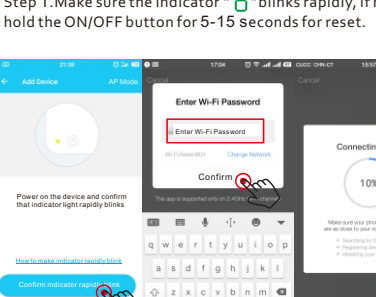
Find the neutral wire
In the wall cassette, look for one or more white wires secured with a wire nut. Do you have a neutral wire?



4

STPE.3

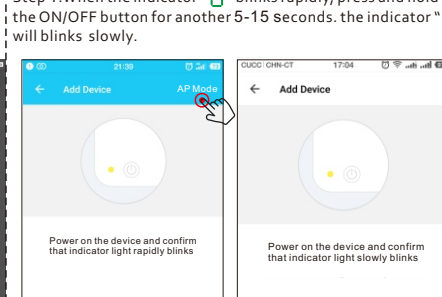
Label your wires
Mark or record the corresponding line before removing the old switch



Usually:
White represents the neutral line
Black represents the fire line
Green or yellow or a single bare copper wire representing the ground wire
The above is for reference only and cannot be used as a standard.

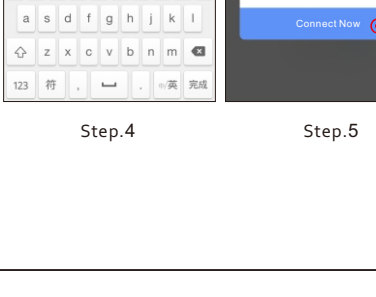
STPE.4

Install switch
Use wire-nuts to connect the switch wires to your home wires, following the diagram. Be careful to match line and load wires. Then remove the stickers, screw the switch into the wall. And attach the faceplate.



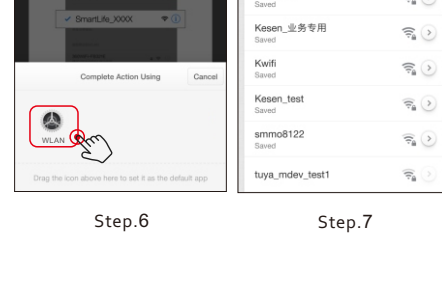
5

STPE.5 Turn on circuit breaker
Turn on your switch's power from the circuit breaker. Press the switch a few times to make sure it works.



STPE.6

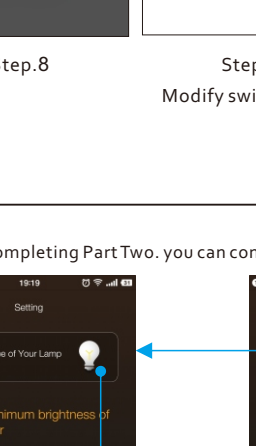
Check the indicator status
Tap NEXT when the " " indicator blinks



6

Install the "Smart Life" APP

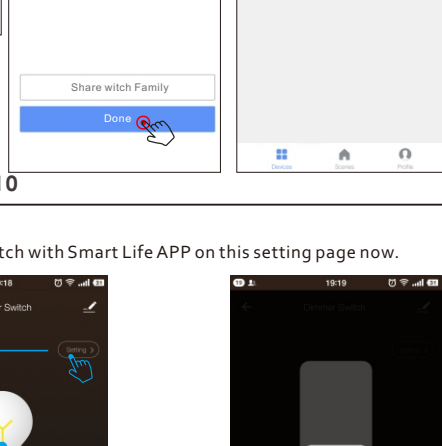
Step A: Find out "Smart Life" app in Apple app store, Google Play, or scan the QR code below and install it.



The free app "Smart Life" is compatible with mobile devices the support IOS8.0 above, Android 4.4 above

Step B: Enter the register interface, input the email address/phone number for getting the verification code to register an account. Please just login if you already have a Smart Life account.

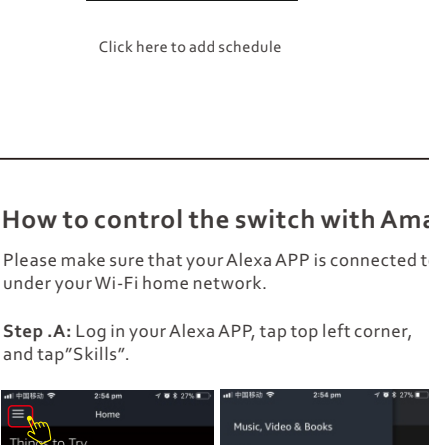
Step C: Add the switch to Smart Life APP
Note: This smart switch can only support 2.4G network and cannot work with 5.0G network. please check if your home network is 2.4G and make sure that your phone has been connected to your Wi-Fi home network
(a) Tap "+" button on top right corner to add device, the tap "Wall switch" to enter next page.



7

Default Mode(Recommend)

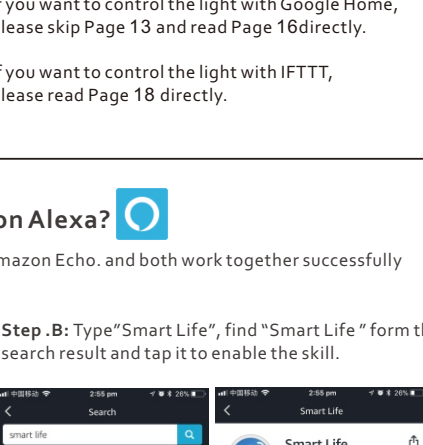
Indicator light " " rapidly blinks (2 times per second)
Step 1. Make sure the indicator " " blinks rapidly, if not, hold the ON/OFF button for 5-15 seconds for reset.



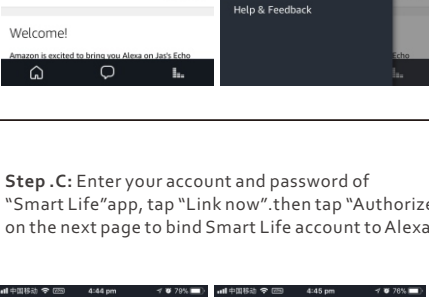
Note: When finish the default mode please go directly to Step.9

AP Mode(Alternative)

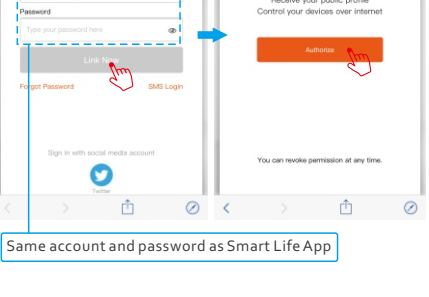
Indicator light " " slowly blinks (1 time every 3 second)
Step 1. When the indicator " " blinks rapidly, press and hold the ON/OFF button for another 5-15 seconds. the indicator " " will blink slowly.



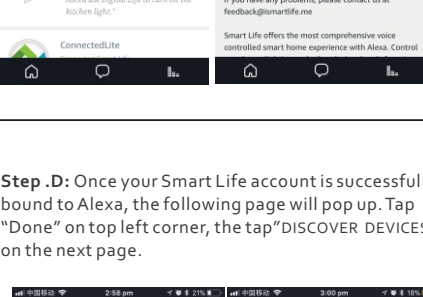
8



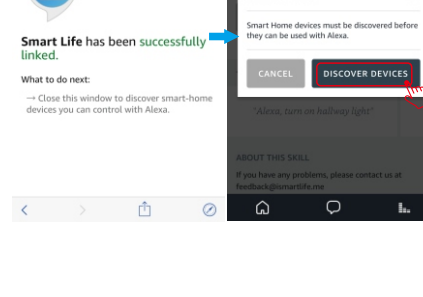
Step.4



Step.5

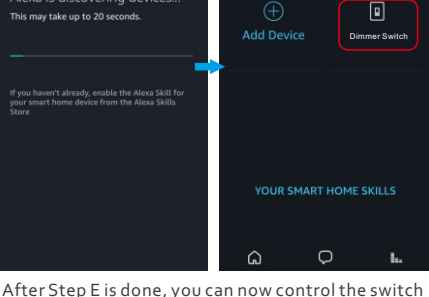


Step.6

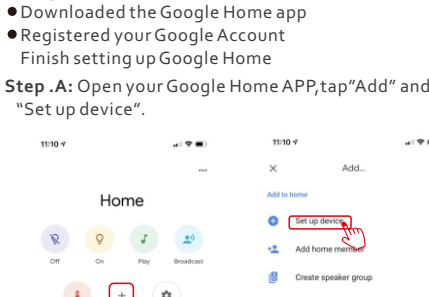


Step.7

9



Step.8

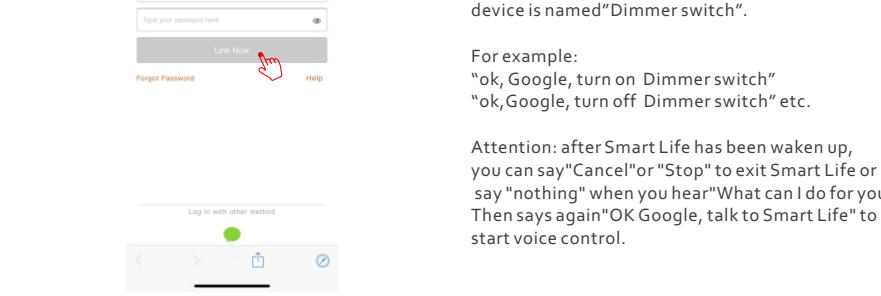


Step.9

Modify switch name

10

After completing Part Two, you can control the switch with Smart Life APP on this setting page now.



Click here to Locked set

Click here select type of your lamp

Try ON/OFF on the app to control the dimmer switch.

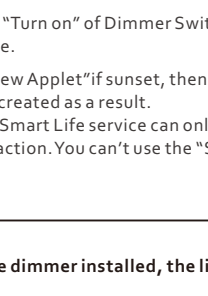
Click here to enter the dimming menu

Slide here to adjust the brightness

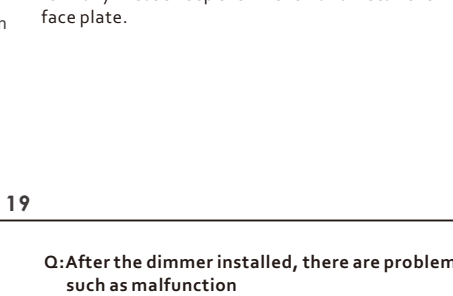
Slide here set the minimum brightness of the dimmer

11

Try timer function to easily set up schedule to turn ON/OFF dimmer switch.



Click here to add schedule



Note:
If you want to control the light with Amazon Alexa, please continue to read Page 13.
If you want to control the light with Google Home, please skip Page 13 and read Page 16 directly.
If you want to control the light with IFTTT, please read Page 18 directly.

12

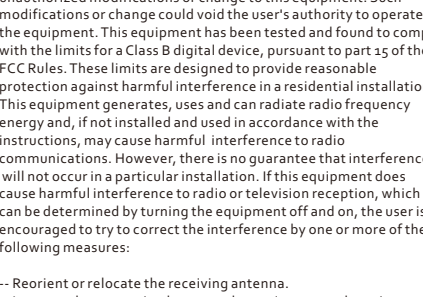
How to control the switch with Amazon Alexa?

Please make sure that your Alexa APP is connected to Amazon Echo. and both work together successfully under your Wi-Fi home network.

Step .A: Log in your Alexa APP, tap top left corner, and tap "Skills".



Step .B: Type "Smart Life", find "Smart Life" form the search result and tap it to enable the skill.



13

Step .C: Enter your account and password of "Smart Life" app, tap "Link now" then tap "Authorize" on the next page to bind Smart Life account to Alexa

Step .D: Once your Smart Life account is successfully bound to Alexa, the following page will pop up. Tap "Done" on top left corner, the tap "DISCOVER DEVICES" on the next page.

14

Step .E: Wait a few seconds for Alexa to detect the switch from Smart Life app. and you will find the device named "Dimmer Switch" has been paired to Alexa App from "Smart Life" APP.

After Step E is done, you can now control the switch with Alexa app on this setting page.

15

How to control the switch with Google Home?

Preparation:
● Downloaded the Google Home app
● Registered your Google Account
● Finish setting up Google Home
Step .A: Open your Google Home APP, tap "Add" and "Set up device".

Step .B: Tap "Have something already set up?"

Step .C: Search for "Smart Life" and add it

16

Step .D: Enter your account and password of "Smart Life" app, tap "Link now" then tap "Authorize" on the next page to bind Smart Life account to Google Home.

Step .E Now you are able to control the switch via Google Home.

Try these commands and see what happens by asking Google
ok, Google, turn on "device name"
ok, Google, turn off "device name"

Note: The device name is the one you give to the switch on "Smart Life" App. In this user guide, the device is named "Dimmer switch".

For example:
"ok, Google, turn on Dimmer switch"
"ok, Google, turn off Dimmer switch" etc.

Attention: after Smart Life has been waken up, you can say "Cancel" or "Stop" to exit Smart Life or say "nothing" when you hear "What can I do for you". Then says again "Ok Google, talk to Smart Life" to start voice control.

17

How to control the switch with IFTTT?

Step .A: Visit the IFTTT official website on your PC and sign in with your IFTTT account.
Note: You can also use IFTTT app and follow similar steps to connect your device to the IFTTT. In this FAQ we take the website setting method for example.

Step .B: "Search" for "Smart Life", and then click "Smart Life" service.

Step .C: Click "Link Now", then login your Smart Life ID and then tap "Link Now".

Step .D: Successfully connect your IFTTT account to your Smart Life ID. You are ready to enjoy the IFTTT service of the product now.

Instructions: 2 methods to use IFTTT with the product.

Method 1: On Smart Life service page, choose an existing Applet you need, turn on it and then finish the configuration.

Method 2: Create a new Applet on your own. Click My Applets" at the top and then click "New Applet" at the right top corner of the webpage to create a new Applet.

Step .A: Create a Trigger.
Tap "this" to choose a Trigger. You can search for "Weather Underground" to choose a Trigger.

18

Step .B: Create an Action.
Tap "this" to choose a Trigger. You can search for "Smart Life" to choose a Smart Life Action.

We select "Turn on" of Dimmer Switch as "The Action In this case.

Step .C: New Applet"if sunset, then turn on light switch" is created as a result.
Note: The Smart Life service can only works when create an action. You can't use the "Smart Life" as a Trigger.

FAQ

Q: Why the switch work at first time, but not working when i control again?

A: Please operate as follow:

Step one: Please adjust the brightness to "I" level on the touch panel, turn off the switch. Put the DIP Switch to "Middle" Level, turn switch ON. If the lamps are working, switch can be used dimming function. Please keep "Middle level" and install the face plate.

Step two: According to step one, if the lamps still not working, Please adjust the brightness to "I" level again and turn off the switch. Continue put the DIP switch to "B" Level. Turn on the switch. If the lamps are working well, the dimmer can be controlled normally. Please keep the "B" Level "and install the face plate.

Q: After dimmer installed, failure to pair APP

A: 1. Is the position of the installed dimmer covered by Wi-Fi? Or is it far from the router? or the signal is weak? Make sure that the position where the dimmer is installed can receive the Wi-Fi signal normally.

2. Please confirm that the entered Wi-Fi password is correct.

3. Please confirm that the Wi-Fi router is 2.4GHz. (Device does not support 5GHz)

4. If all the above information are correct but still failure to get connected, please re-pair with AP mode.

20

English 7.3.2(a)

TO REDUCE THE RISK OF OVERHEATING AND POSSIBLE DAMAGE TO OTHER EQUIPMENT, DO NOT INSTALL TO CONTROL A RECEPTACLE, A MOTOR OPERATED APPLIANCE, OR A TRANSFORMER SUPPLIED APPLIANCE

FCC NOTE :

This device complies with Part 15 of the FCC Rules. Operation is subject to the following two conditions:

(1) this device may not cause harmful interference,

(2) this device must accept any interference received, including interference that may cause undesired operation. The manufacturer is not responsible for any radio or television interference caused by unauthorized modifications or changes to this equipment. Such modifications or changes could void the user's authority to operate the equipment. This equipment has been tested and found to comply with the limits for a Class B digital device, pursuant to part 15 of the FCC Rules. These limits are designed to provide reasonable protection against harmful interference in a residential installation. This equipment generates, uses and can radiate radio frequency energy and, if not installed and used in accordance with the instructions, may cause harmful interference to radio communications. However, there is no guarantee that interference will not occur in a particular installation. If this equipment does cause harmful interference to radio or television reception, which can be determined by turning the equipment off and on, the user is encouraged to try to correct the interference by one or more of the following measures:

-- Reorient or relocate the receiving antenna.

-- Increase the separation between the equipment and receiver.

-- Connect the equipment into an outlet on a circuit different from that to which the receiver is connected.

-- Consult the dealer or an experienced radio/TV technician for help.

RF warning statement: To maintain compliance with FCC's RF exposure guidelines, this equipment should be installed and operated with a minimum distance of 20cm between the radiator and your body.

21