

Getting Started

1

IMPORTANT

Long condition the battery. Refer to the Battery Charger User Guide.

2

Install the Antenna

3

Install the Battery

4

Turn on radio then adjust speaker volume.

5

Make a call

Radio Configuration

Your Tait Orca radio has been configured for your requirements by your authorised Tait Dealer or your company administrator. Therefore, some functions will vary in operation or will not be available. The configuration information can be written onto this User Guide. For more information on trunking call functions, contact your Network Operator.

Batteries

Use Tait Orca 5000 NiCd/NiMH batteries or Tait Orca Elan/Excel/Eclipse NiCd/NiMH batteries. For more information on batteries, refer to the Battery User Guide.

IMPORTANT

Do not put Tait Orca 5000 batteries into older battery chargers. Tait Orca 5000 NiCd/NiMH batteries are ONLY for Tait Orca battery chargers with software version 2.07+.

Parts

If any parts are damaged or missing, report this to your authorised Tait dealer immediately.

©Tait Electronics Limited

www.taitworld.com/orca

100% Synthetic Paper: Waterproof, Strong, Chemical Resistant, Recyclable. Solvent based ink.

Printed in New Zealand

M50TK-000-00-050

Making Calls

Normal mode

Illustration shows the recommended method for use in normal mode. Use the upper microphone to speak.

Handset mode

Illustration shows the recommended method for use in handset mode. Use the lower microphone to speak.

Keypad

Dial the number (5040 radios only)

Example: 159 307823

1 2 ABC 3 DEF 4 GHI 5 JKL 6 MNO 7 PQRS 8 TUV 9 WXYZ * 0 #

To make the call, short press: #

Short press Long press

16-way Selector

The selector uses the presets numbered 1 to 16

Example: 159 PETER

To make the call, short press: #

Short press Long press

Menu

Use the Menu to make a call

Long press

Example: MENU PETER

Select the Destination

Example: MENU PETER

To make the call, short press: #

Short press Long press

Function Keys

Use a short press or a long press to operate the function keys 1, 2, and 3.

Function Key 1

Function Key 2

Press PTT to talk. Release PTT to listen.

Function Key 3 or Action List

External Function Keys 1 and 2

Call Information

GO

Go. Call accepted. Press PTT to Talk. Release PTT to listen.

QUEUED

Queued. Recipient has queued your call.

ENGAGED

Engaged. Recipient is busy.

SYS BUSY

System is busy.

NOT HOME

Recipient has turned radio off. Recipient is in Quiet mode (do not disturb). Recipient is out of range.

WAIT

Wait. System is busy but will connect you as soon as possible.

UNAVAIL

Unavailable. Call is not permitted.

UNOBTAIN

Unobtainable. Number is not supported.

ACCEPTED

Accepted. Call has been accepted.

QUIET

Quiet. Do not disturb.

CALLBACK

Callback. Return call by pressing PTT or Menu.

CAR9

Preset call numbers with label

208

Preset call number without label OR same fleet but not set as a preset call on your radio

0 FLEET

Call is from different fleet

PHONE

Call is from PSTN

PABX

Call is from PABX

CL1/3

CL = Call
SCL = Status
MCL = Message

LOCKON

Lockon.
Keylock is on.
Long press to unlock

ENTER CODE

Enter Security PIN using keypad (personal identification number).

Phonetic Alphabet

Alpha A
Bravo B
Charlie C
Delta D
Echo E
Foxtrot F
Golf G
Hotel H
India I
Juliet J
Kilo K
Lima L
Mike M
November N
Oscar O
Papa P
Quebec Q
Romeo R
Sierra S
Tango T
Uniform U
Victor V
Whisky W
X-ray X
Yankee Y
Zulu Z

Status Label

Send a status label to a user or the despatcher (not a group)

1 Long press DATA ENTRY

2 Short press SELECT STATUS

3 Select the Status Label

Example: AT LUNCH

4 Short press to immediately send to despatcher

4 Short press Enter radio number e.g. 211

4 Short press Select the Destination

Example: JOHN

To make the call, short press: #

To make the call, short press: #

To make the call, short press: #

Battery 100% charged

Battery 60% charged

Battery Low

DTMF Mode on

Monitor Mode on

Scroll

Handset Mode on

Call Timer

A call is in the Queue

Transmit at normal power

Transmit at low power Max.1W

Access to trunking network

No access to trunking network, or unauthorised site, or out of signal range.

Signal strength indicator. Also for contrast indication.

Antenna

Function Key 1

Function Key 2

Press to Talk (PTT) or Send (make call)

Function Key 3 or Action List

Control or Traffic Channel

Conventional Mode

Queue: Call # of # (20 maximum)

Caller ID

16-way Selector

On/Off and Volume

LED

Speaker

Normal Microphone

Menu scroll keys: Backwards Forwards

Display

Clear, Cancel or Back in Menu

Menu, Select, Toggle (A/B) or Send (make call)

Alphanumeric Keypad

Send (make call)

Manual Dialling

Handset Microphone

Menu

MENU

Long press for Menu or exit Menu. When in Menu, short press to Select or to Toggle a function e.g. on / off

Menu scroll keys: Forwards and Backwards

QUEUED CALLS

Clear, Cancel or Back in Menu. Delete queued calls.

Scroll in list: (a) Return call (b) Read status / message (b) Delete call (automatic if return call)

SELECT PRESET

Select from list: who to call, status call, radio setting, radio mode.

GROUP 1 RADIO 56... Presets display alphabetically

DATA ENTRY

SELECT STATUS → Select status from list of status labels: LUNCH BACKIN15 AT SITE1...

USER SETTINGS

HANDSET → Handset mode: on/off

LOW PWR → Transmit at low power: on/off

KEYLOCK → Keypad lock: on/off. Long press to unlock

SQUELCH → Squelch: city/country

DTMF → Dual Tone Multifrequency (DTMF) mode: on/off

QUEUE → Queue incoming calls: on/off. Maximum 20 calls

QUIET → Quiet. Do not disturb: on/off

DYN PWR → Dynamic power control: on/off (MPT1327)

PTTLOCK → PTT Lock. PTT is locked.

ALERT SETTINGS

TONES → Tones. Beeps: on/off

LEVEL → Level. Beep volume: high/low

KEYTONE → Keytone. Keypress beeps: on/off

DISPLAY SETTINGS

NIGHT → Night use mode: on/off

ADJUST CONTRAST → Adjust contrast of display

ADV SETTINGS

SELECT SITE → Select Site (control channel) from list: 123 156...

RESUMING Resuming normal signal hunting

SELECT NETWORK → Select Network from list: NETWORK1...

VERSION Select version from list: SW VER Software MAIN DB Database HW VER Hardware CAL DB Calibration

Modes

Dynamic Power Control MPT1327

Automatically reduces the transmit power in high signal strength areas.

Conventional Mode

Radio to radio

Handset mode LED slowly flashes red and green. Handset icon is displayed.

Monitor mode In conventional mode, listen to all traffic and all groups on a channel.

Group Calls

Broadcast Call – Group members can listen but not respond.

Conference Call – Group members can listen and respond.

A user can be assigned to some groups, all groups or no groups.

Trunked – Permanent groups are set by the trunking system. Persons are assigned when the radio is configured.

Temporary Groups

A user can become a member of a group temporarily by selecting the group or when the despatcher assigns the user to a group.

Group Call Limitations

Sender has no indication of how many group members have received the call. No connection acknowledgment. Need the recipient to acknowledge by voice.

Radios that are off, out of range, or engaged will not receive.

Group Numbering Scheme

User's have an individual ID plus membership in none, some or all of the Group IDs.

Group Types

User Selectable Group

Scan Group

User Selectable plus Scan Group

Permanent Group

Dynamic Group

Manual Group Select

Manual Group Select

Users can select the groups that they want to be assigned to using the 16-way selector.

Group Select

The despatcher controls which groups the user is assigned to. This feature can be dependent or independent of the position of the 16-way selector, so that group control from the despatcher can be ignored or accepted.

Radio Configuration

Presets

Write your settings

0 50

1 51

2 52

3 53

4 54

5 55

6 56

7 57

8 58

9 59

10 60

11 61

12 62

13 63

14 64

15 65

16 66

17 67

18 68

19 69

20 70

21 71

22 72

23 73

24 74

25 75

26 76

27 77

28 78

29 79

30 80

31 81

32 82

33 83

34 84

35 85

36 86

37 87

38 88

39 89

40 90

41 91

42 92

43 93

44 94

45 95

46 96

47 97

48 98

49 99

F3 Action List

1

2

3

Status Labels

1 16

2 17

3 18

4 19

5 20

6 21

7 22

8 23

9 24

10 25

11 26

12 27

13 28

14 29

15 30

Radio Identification

network # group # radio #

Group Information

Emergency Call Numbers

Radio Configuration

Write your settings

Short Press Long Press

Short press is less than 1 second

Long press is more than 1 second

Note: Function keys use a toggle action (A/B)

F1

F2

F3

External

Disabled

Tones – Beep on / off

Dynamic Power Control on / off

Preset Call #1

Preset Call #2

Select Site (control channel) – 5040 only

Clear

Do Not Disturb (DND) on / off

Adjust Contrast of Display

Backlighting on / off

Night Use Mode on / off

Handset Mode on / off

Transmit at Low Power on / off

Monitor on / off

Keypad Lock on / off to unlock

DTMF mode on / off – 5040 radio only

Handset Mode

Volume

Inactivity seconds =

16-way Selector

The selector uses the presets numbered 1 to 16.

1 9

2 10

3 11

4 12

5 13

6 14

7 15

8 16

Trunking Call Functions

Common Trunking Functions		N = Number
Dialling String	Function	
*0 #	Request base despatcher to call you back	
#0 #	Cancel	
*0*NNN #	Request another despatcher to call you back	
#0*NNN #	Cancel	
*0SS*NN #	Status call. SS = status 01 to 30	
*0PP*NNN #	Status label to despatcher. PP = preset 00–99	
*1*NN #	Conference call to group NN	
*11*NN #	Broadcast call to group NN	
*31*NN #	Non-prescribed data calls	
*41*NN #	Divert own calls to radio NN	
#41 #	Cancel	
*41*0NN... #	Divert own calls to PSTN NN	
#41 #	Cancel	
*44*NN*MM #	Divert third party calls from NN to MM	
#44*NN #	Cancel	
*48 #	Queue incoming calls	
#48 #	Cancel	
*49 #	Quiet. Do not disturb	
#49 #	Cancel	
*700 #	Display the name of the current network	
*701 #	Change to network 1 to 4 (701 702 703 704)	
*8*NN #	Priority call to radio NN	
*8*1*9NN #	Priority conference call to group NN	
*9*NN #	Emergency call to radio NN	
*9*1*9N #	Emergency conference call to group NN	
*N*NN #	Abbreviated dialling codes 1–49	
#45 #	Cancel call divert from other user	
MPT1343 Common Call Setup		
Dialling String	Call To	Example
0	PSTN number	0 03 3583399 #
20 to 89	Radio in same fleet as you	23 #
200 to 899	Radio in same fleet as you	234 #
2001 to 6050	Radio in another fleet with same prefix as you	3078 23 # or 3078 234 #
200 to 327	Radio in another fleet with different prefix to you	300 3078 23 #
90 to 99	Group in same fleet as you	92 #
900 to 999	Group in same fleet as you	923 #

ANN Fleet Calls		
Fleet Size	Call To	Example
Large	Radio 234 in Fleet 1 with same prefix as you	7 1 234 #
	Radio 235 in Fleet 2 with different prefix i.e. 32	7 32 2 235 #
Medium	Radio 23 in Fleet 51 with same prefix as you	7 51 23 #
	Radio 23 in Fleet 52 with different prefix i.e. 126	7 126 52 23 #
Small	Radio 23 in Fleet 80 with same prefix as you	7 (8or9) 80 23 #
	Radio 23 in Fleet 81 with different prefix to you i.e. 3	9 3 81 23 #

LMS Dialling		
Call Type	Call To	Example
Own fleet	Radio 213 in Fleet 34 in same fleet as you	213 #
Interfleet	Radio 215 in Fleet 36 (another fleet)	36 215 #
Interprefix	Radio 217 in Fleet 38 (another fleet) of Prefix 202	202 38 217 #

Preset Numbers		
Dialling String	To	Example
0 then 0 to 99 #	Preset strings (leading zero)	069 #

Conventional Channels		
Dialling String	To	Example
101 to 110 #	Conventional channels	106 #

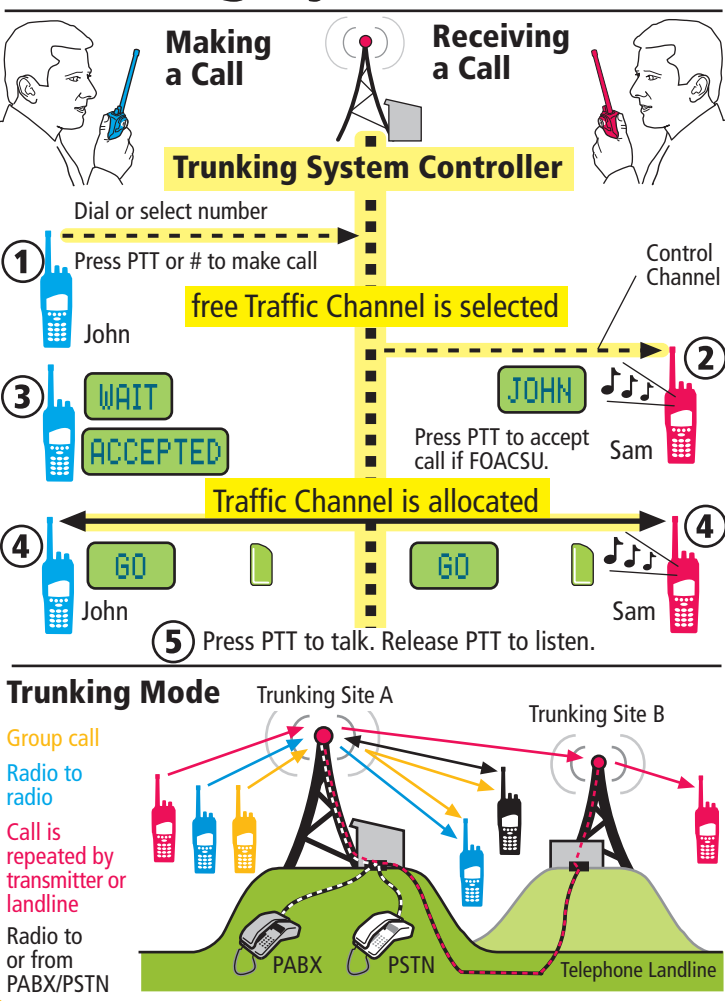
Performance

- To maintain the optimum performance of the radio:**
- ◆ Use only the supplied antenna.
 - ◆ Use only the radio and accessories for their design purpose.
 - ◆ Use only accessories that are approved by Tait Electronics Ltd.
 - ◆ Avoid high temperatures. If the temperature exceeds 80°C (176°F) the radio will make two short high-pitched beeps and will not work. Temperatures above 90°C (194°F) cause permanent damage to the radio.
- To maintain the optimum performance of the battery:**
- ◆ Short condition the battery weekly.
 - ◆ Long condition the battery only for the following conditions: on first use, if performance is poor, and after more than two weeks of storage.
 - ◆ Turn the radio off when it is unattended for long periods.
 - ◆ Avoid extreme temperatures as they damage the cell chemicals. The ideal temperature range is 15° to 25°C (59° to 77°F).
 - ◆ Clean electrical contacts of the battery and charger weekly, using a clean dry Q-tip™ / cotton bud.
 - ◆ Use only Tait Orca 5000 series battery chargers with software version 2.07+.

Recycle

Recycle batteries that are of no use.
Contact your authorised Tait dealer for advice.

Trunking System



Looking after your Radio

- ◆ Your radio does not require routine maintenance. However, it is a sophisticated electronic device and should be treated with care.
- ◆ Clean the radio, accessories and charger weekly using a clean dry lint-free cloth. When cleaning, do not use solvents, detergents, alcohol, aerosol sprays or petroleum-based products.
- ◆ Clean the electrical contacts on the battery and charger weekly, using a clean dry Q-tip™/cotton bud.
- ◆ Do not put the radio and accessories in fluids.
- ◆ Do not drop the radio onto hard surfaces, place it down carefully.
- ◆ Do not use if the radio, antenna or accessories are damaged.
- ◆ Repairs and modifications must only be carried out by a Tait approved dealer.

Troubleshooting

If the display is blank after turning on the radio and the radio turns itself off automatically after a few minutes, it is likely there is no power.

Battery is low. Charge the battery.

Battery is too low to operate the radio. Turn off the radio. Charge the battery.

Radio is incorrectly configured. Contact your authorised Tait dealer or your company administrator.

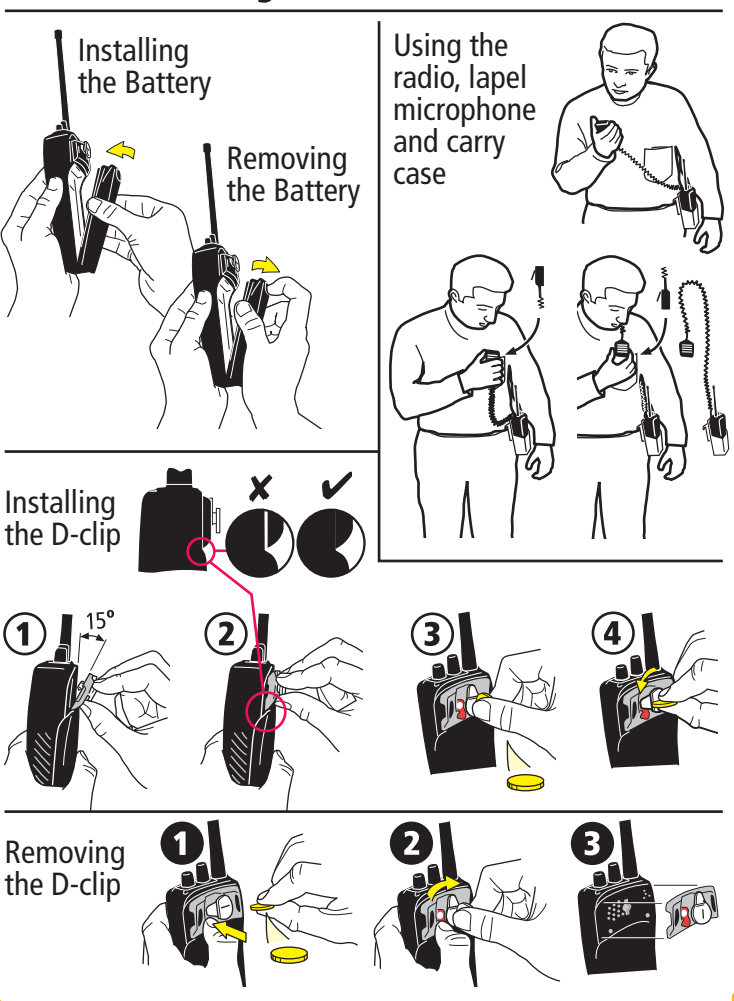
ERROR XX

Checklist

- ◆ Is the radio turned on?
- ◆ Is the correct channel selected?
- ◆ Is the battery installed in the radio?
- ◆ Is the battery charged?
- ◆ Is the antenna damaged?
- ◆ Is the battery charger working properly?

Contact your authorised Tait dealer or your company administrator.

Accessory Use



Accessories

Contact your authorised Tait Dealer

6-Way Multi-Charger

Battery

Belt Loop

Antennas

Battery Charger

D-Clip

Accessory Connector Kits

Leather Carry Cases

Accessory Adaptors

Headphones

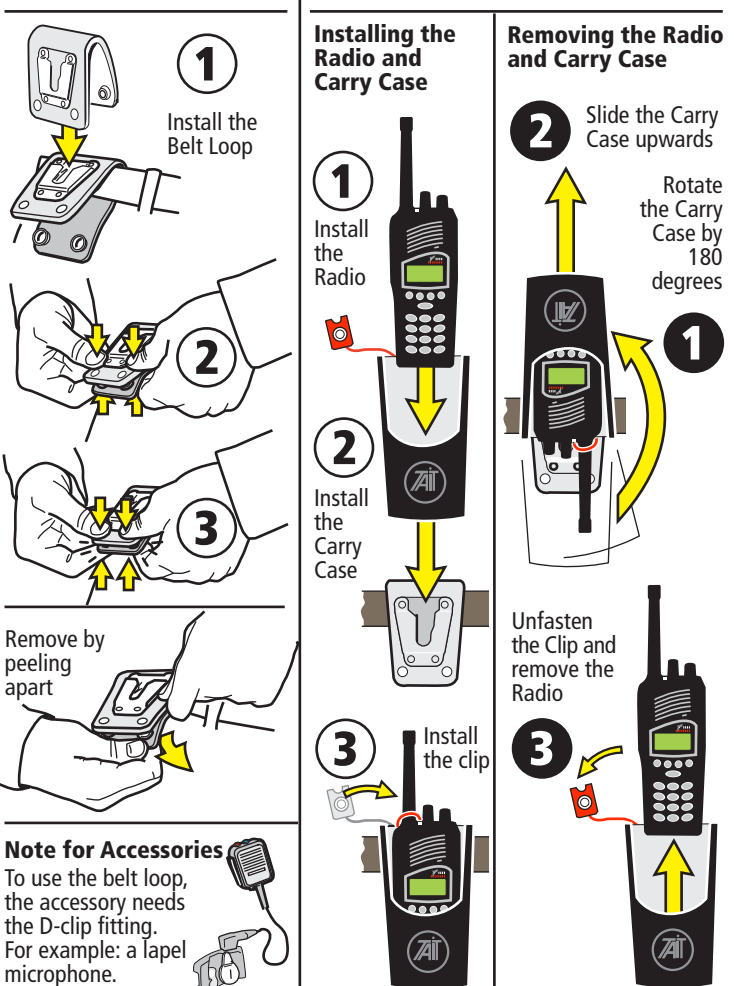
Earphones, Palm and Lapel Microphones

Speaker Microphones

Servicing and Programming Kits

Car Kit

Belt Loop



Safety Precautions

- It is important for your safety and the safety of others to comply with the following safety precautions:**
- ◆ When transmitting, hold the radio microphone 25–50mm (1–2 inches) from your mouth.
 - ◆ When transmitting, keep the antenna at least 25mm (1 inch) from any part of your body, especially your face and eyes.
 - ◆ Turn off the radio where radio waves could interfere with electronic devices.
 - ◆ Turn off the radio at fuel/gas stations.
 - ◆ Turn off the radio in an area where detonators/explosives are being used.
 - ◆ Turn off the radio before boarding/leaving an aircraft and whilst on board an aircraft.
 - ◆ Do not use the radio whilst driving vehicles or operating machinery.
 - ◆ Do not use earphones or headsets at high volume levels.
 - ◆ Do not transmit in frequency band 406 to 406.1 MHz. This band is reserved for use by distress beacons.
 - ◆ Do not put the radio, battery or accessories in liquids as they will be damaged.
 - ◆ Do not allow children to play with the radio; it is not a toy.
- Hazardous Atmospheres**
- ◆ A hazardous atmosphere has the potential for fire or explosion from dusts, gases, liquids and solids.
 - ◆ Turn off the radio in hazardous atmospheres as an explosion or fire could occur, unless the radio is qualified for use in such environments.
 - ◆ Do not replace batteries in hazardous atmospheres as an explosion or fire could occur, even if the radio is qualified for use in such environments.
 - ◆ Do not use damaged radios in hazardous atmospheres as an explosion or fire could occur. If the radio was originally qualified for use in such environments, the radio is not qualified if it has a cracked casing.
 - ◆ Do not modify the configuration of a radio that is qualified as intrinsically safe for use in hazardous atmospheres. If you do, it will not be qualified.
- Exposure to Radio Frequency Energy**
- The Tait Orca 5000 series radio generates and radiates radio frequency (RF) electro-magnetic energy (EME). The Tait Orca 5000 series radio and accessories have been designed to comply with international standards and guidelines.
- Electromagnetic Interference**
- Turn off your radio where radio waves could interfere with electronic devices. Some facilities use equipment that is sensitive to Electromagnetic Interference such as: hospitals, medical centres, aircraft and some industrial facilities. Do not use your radio in these areas unless the radio is qualified for use in such areas.