

KT602 Guitar Function Instructions

PS4/PS3/PC three-in-one guitar

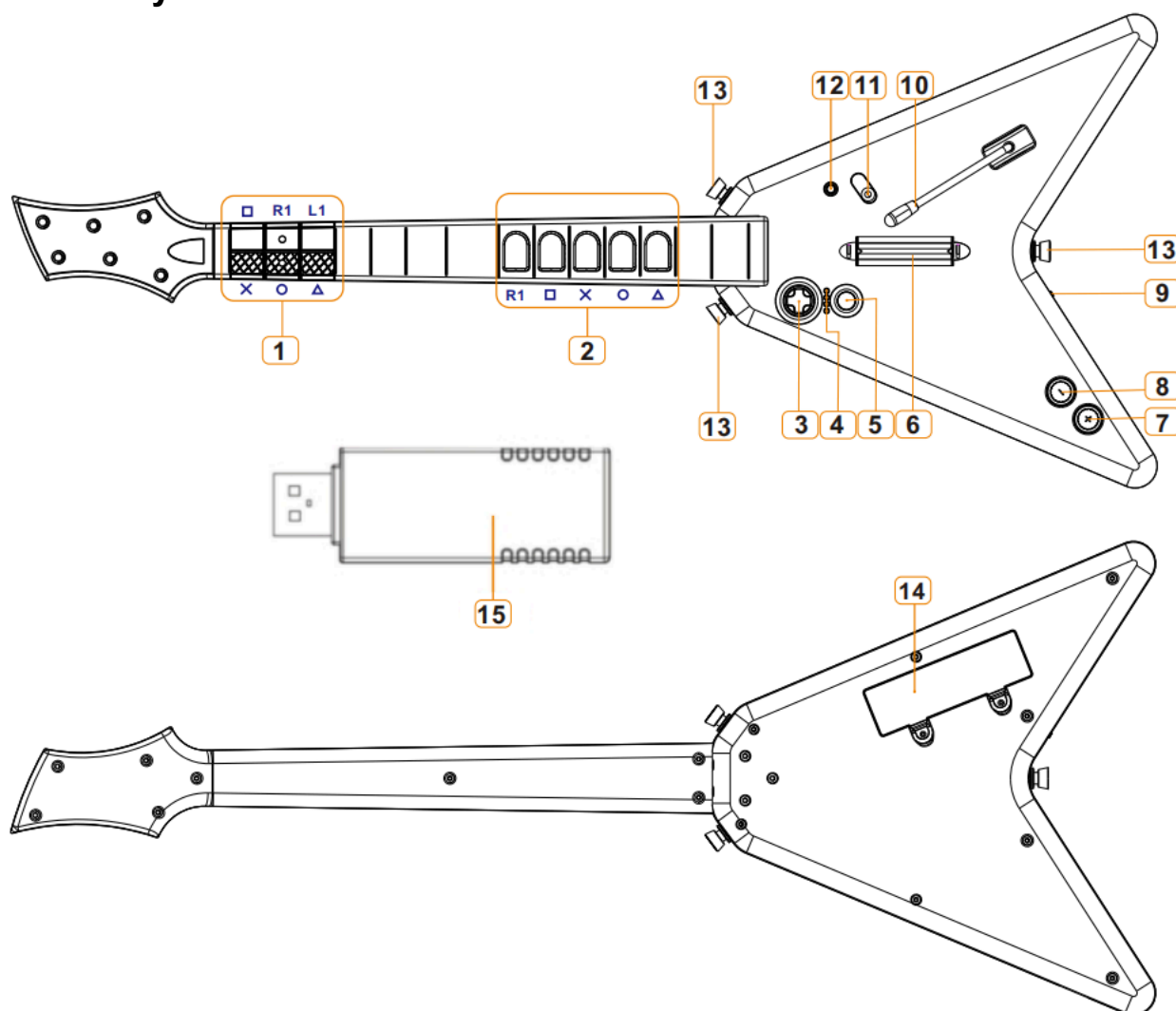
★、Introduction

This guitar is a wireless three-in-one guitar using 2.4G RF technology. By connecting the receiver to the PS3/PS4 host or the USB interface of the computer, the wireless connection to the guitar end is achieved. Turn on the power switch of the guitar end to automatically connect to the receiver without coding; PS3 supports "Guitar Hero 3", "Guitar Hero World Tour" and "Rockband" games, and the PC platform supports "Guitar Hero 3", "Guitar Hero 3 Legends Of Rock" and "Guitar Hero World" Tour "Guitar Hero Aerosmith" game; PS4 platform "Guitar Hero Live»

The PC defaults to keyboard and mouse mode when it is powered on, and supports setting Xinput mode.

PC supports Win10/Win11 (Win7 is not supported)

★、Function keys



PS4 Guitar Hero Live in-game melody buttons

5-color melody buttons in PS3/PC games, They are green, red, yellow, blue and orange play buttons.

Arrow keys

Platform indicator/mode light

PS key, mode key

Picking keys: In the game, when the picking keys and playing buttons corresponding to different colors of melodies are operated at the same time, different melodies will be emitted.

+ key: pause and start key on PS4/P3 platform; confirmation key on PC platform.

-Key: PS3 platform selection key; PC platform Esc function, or pause.

Power toggle switch.

Pressure stick: When there is a long sound in the game, you can change the sound effect in the

game by tapping the pressure stick.

Sound effect toggle switch: If you flip this button in the Rockband game on the PS3 platform, five different sound effects will appear to choose from.

Game switch key: Press and hold this key for 2 seconds on the PS3 platform to switch between Guitar Hero and Rockband game modes; on the PC platform, this key is the Backspace function.

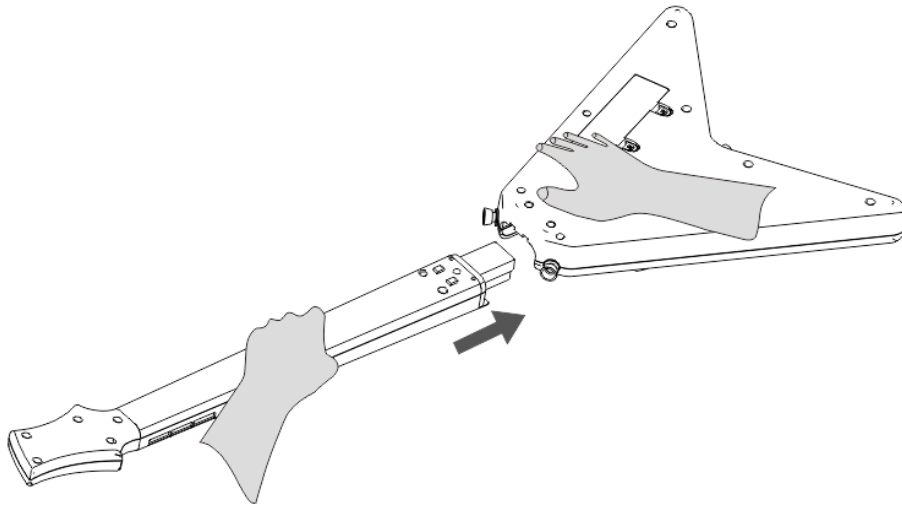
Strap buckle.

Battery compartment, suitable for 4 AA batteries

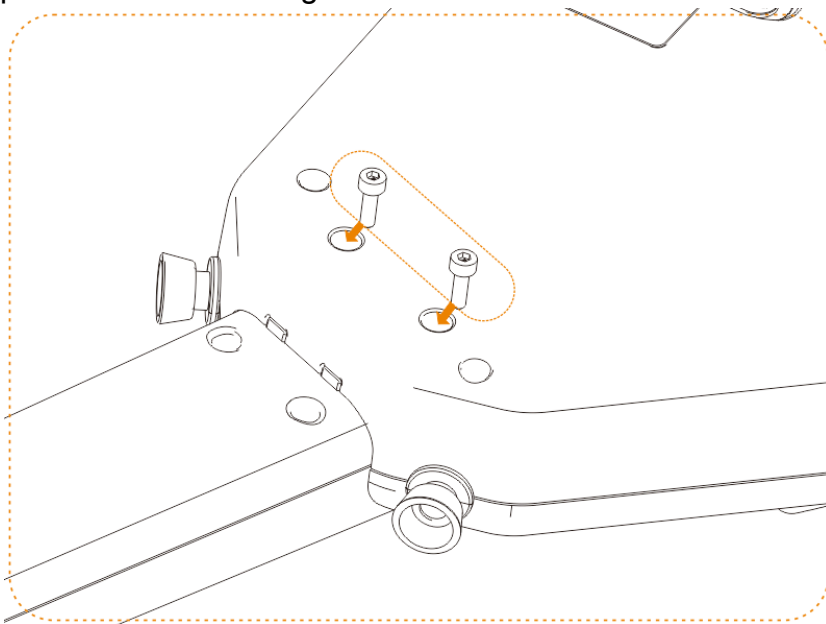
Receiver, connect the receiver to the corresponding platform before use.

★.Guitar pole installation

1. Take out the guitar stick from the box and insert the guitar stick into the main body as shown in the picture.



After the piano rod is connected, fix the two screws in the position shown below to prevent the piano rod from coming out.



★、Install the strap

First take out the strap in the box

Use the holes at both ends of the strap to connect to the strap buckles on the guitar.

The length of the strap can be adjusted as needed.

★、Install the battery

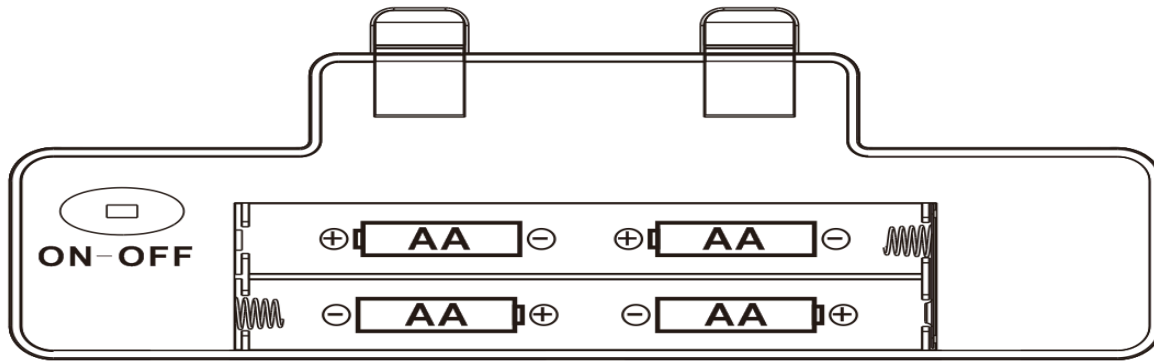
The product supports standard LR6 (AA) batteries. Battery accessories are not included in the package. Consumers need to purchase according to this specification.

Before installing the battery, check that the switch is in the off state (OFF state).

Please install the battery correctly according to the polarity markings.

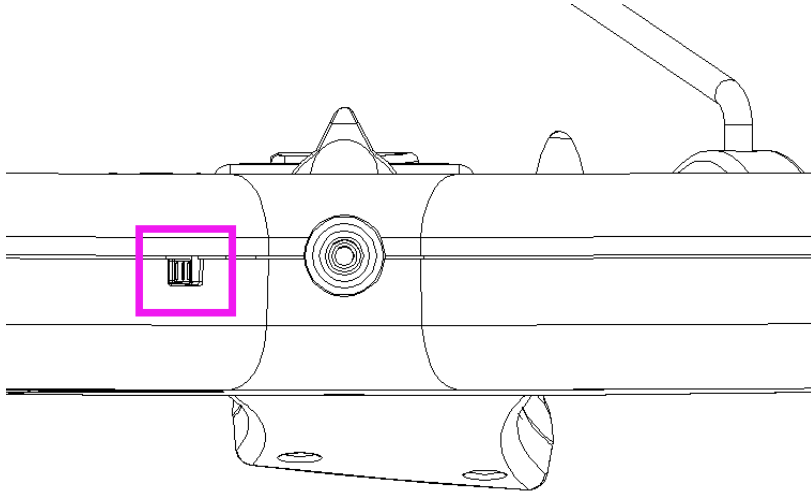
After the battery is installed, please check whether the battery is installed correctly.

Turn the switch to ON and close the battery cover.



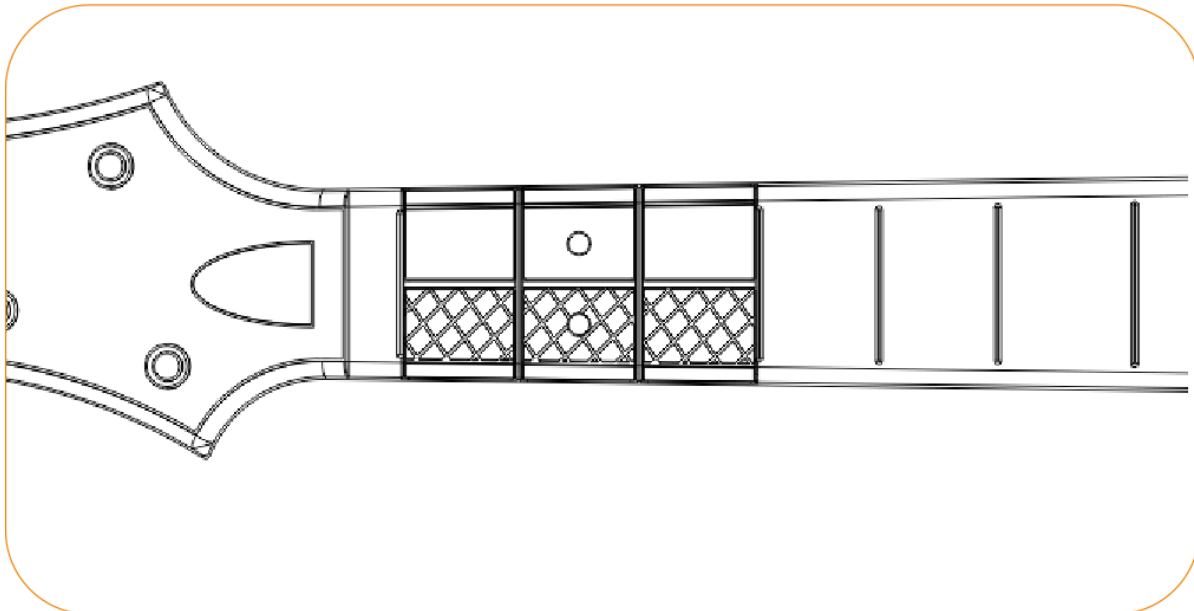
★, power switch

Turn the toggle switch to the ON position and turn on the power switch



★、Up six buttons

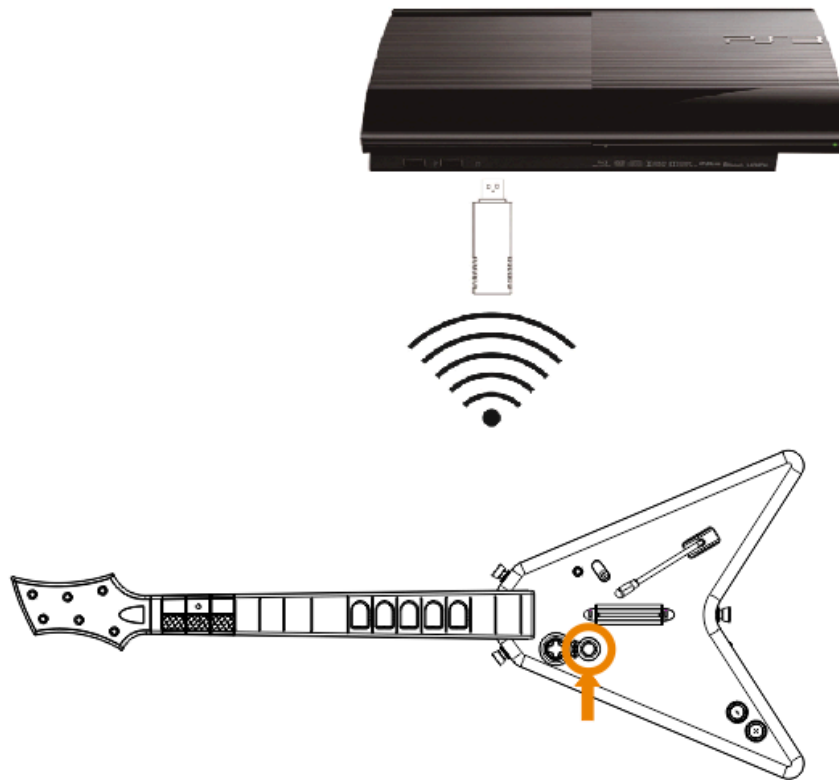
Currently, the top six buttons of the piano bar are only compatible with PS4's "Guitar Hero Live» game.



★.Connect to PS3 game console

First, turn the guitar's power switch to ON, then insert the receiver into the USB port of the PS3 game console, and press the "PS" button on the guitar once to pair the guitar with the receiver. After the connection is successful, the red light of the receiver is always on, and the No. 1 light on the guitar end is always on; at this time, the guitar is in Guitar Hero mode.
(If the connection is unsuccessful, you can unplug the receiver and plug it in again, and press the PS button once to connect again).

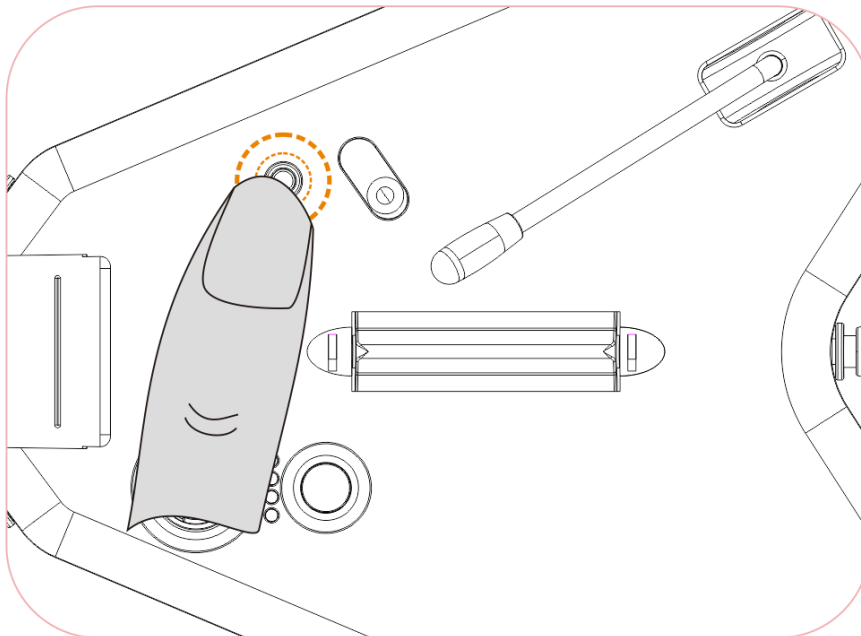
If it enters sleep mode, press the guitar's "PS" button to wake up the guitar and connect



automatically.

Convert Rockband Games

First, after the guitar is successfully connected to the receiver, the red light on the receiver turns on. The Guitar Hero game mode is the default. If you are playing the Rockband game, you need to press and hold the small button on the guitar side for 3 seconds before entering the game. Wait for the LED on the receiver side to turn into an ice blue light, indicating that the Rockband game mode is successfully switched.



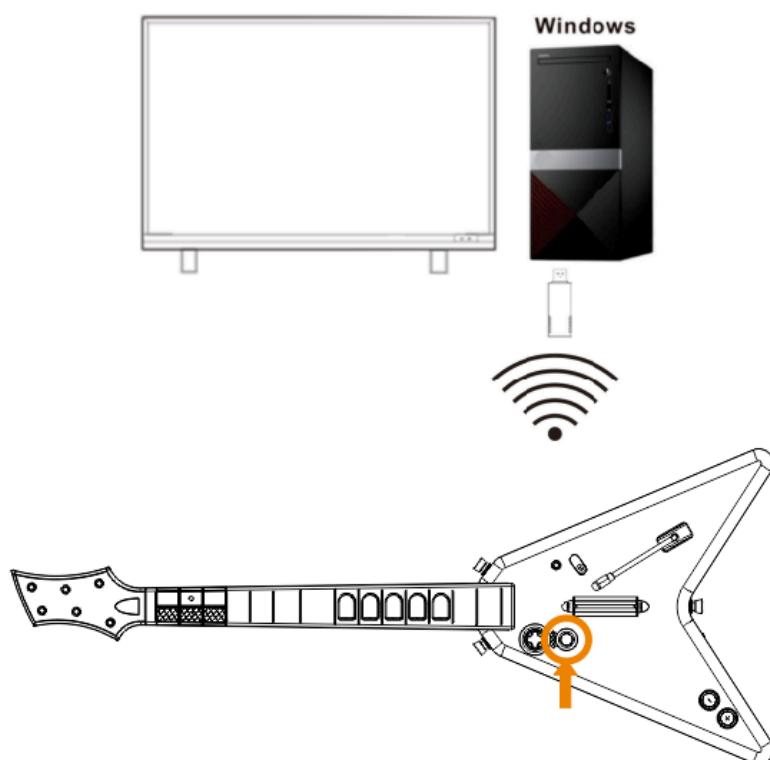
★.Connect to Windows computer

The PC platform is compatible with Win10/Win11 systems.

First, toggle the guitar's power switch to the ON state, then insert the receiver into the USB port of the computer, press the guitar PS button once to pair the guitar with the receiver. After the connection is successful, the blue light of the receiver is always on, and the No. 1 light on the guitar end is always on; at this time, the guitar is in keyboard and mouse mode.

(If the connection is unsuccessful, you can unplug the receiver and plug it in again, and press the PS button once to connect again).

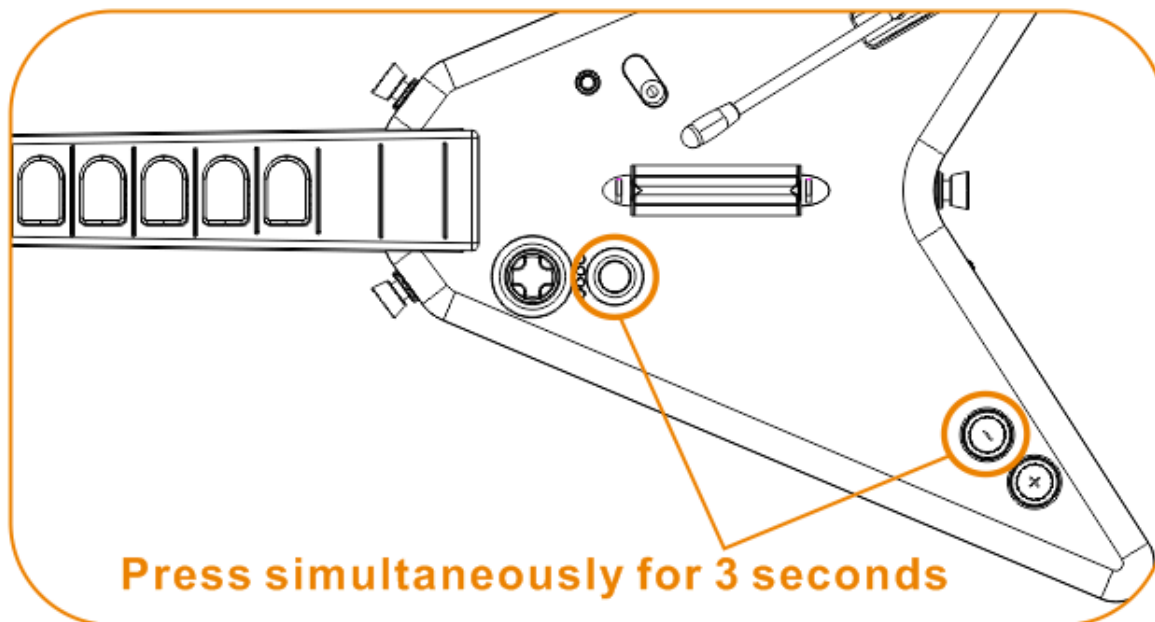
If the guitar goes into sleep mode, press the PS button of the guitar to wake up the guitar and connect automatically.



Switch to Xinput mode

The guitar defaults to keyboard and mouse mode when it is powered on. If a two-player game is required, P2's guitar needs to be set to Xinput mode.

Setting method: Press the "— and PS keys" at the same time for about 3 seconds, the receiver will turn green light and the No. 2 light on the guitar end will light up, indicating that the conversion is successful.



PC gaming settings

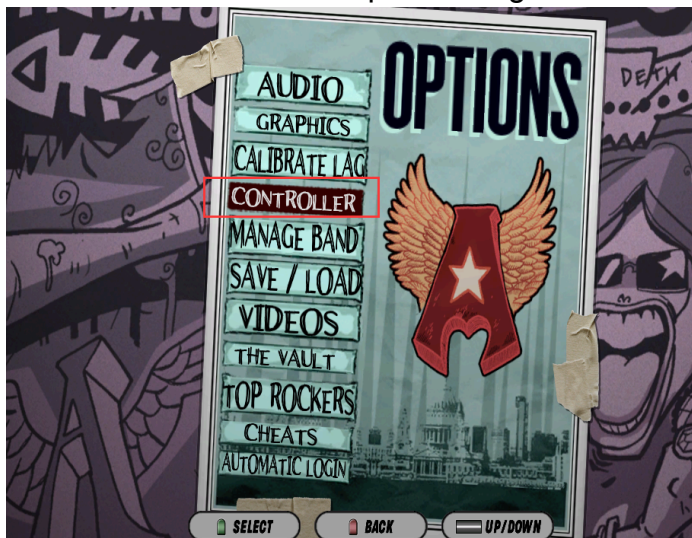
Note that after entering the game on PC, some games default to left-handed playing. You can set it in the guitar game.

Example of setting up the Guitar Hero Aero smith for left-handed or right-handed use

After entering the game, find the option in the picture below, press the arrow keys to select the OPTIONS below, and press the green key to confirm.



Select the CONTROLLER below and press the green button to confirm.

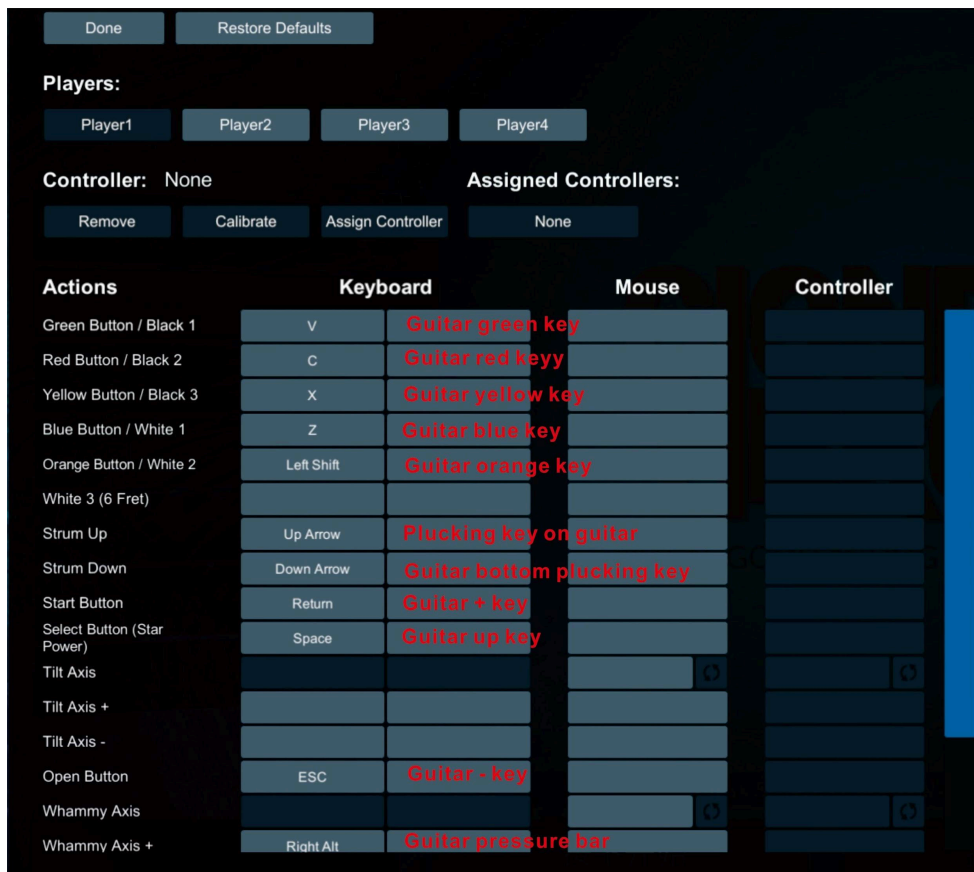


Put the P1 position in the picture below. If \checkmark is canceled, it will be a right-handed guitar. If \checkmark is added to the left-handed mode, (the \checkmark of right-hand mode P1 and P2 of the two-player game will be canceled to be a right-handed guitar mode).

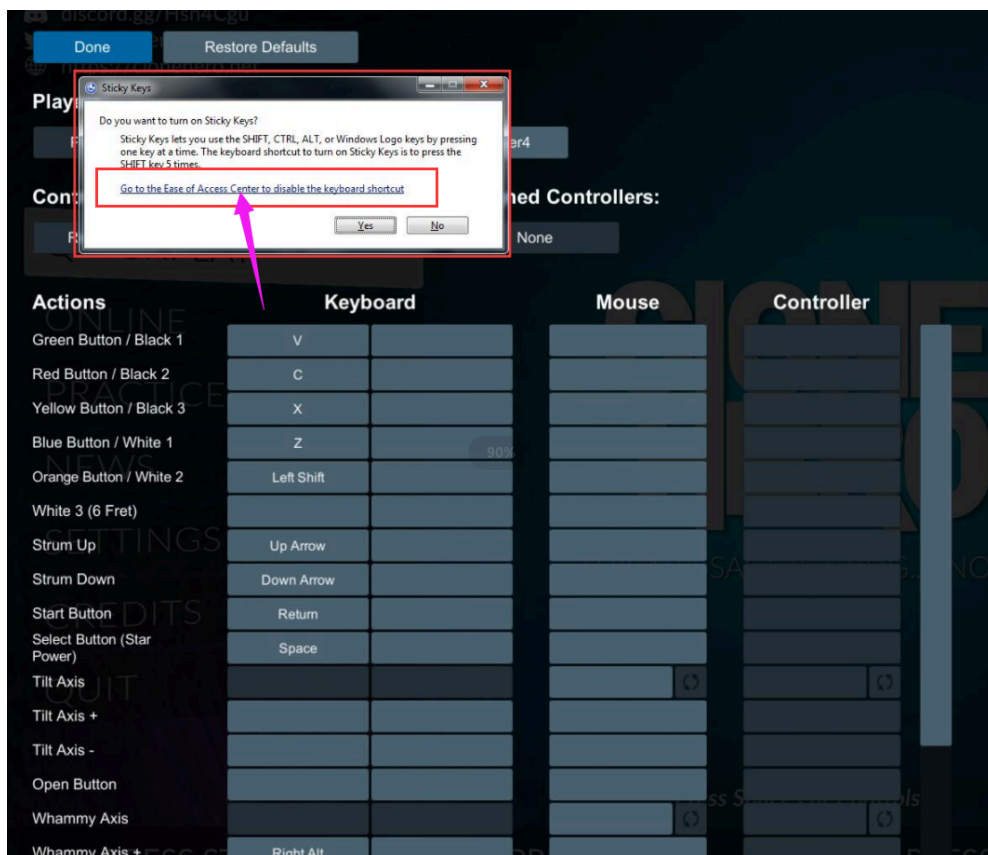


Guide settings instructions for playing Clone Hero on PC

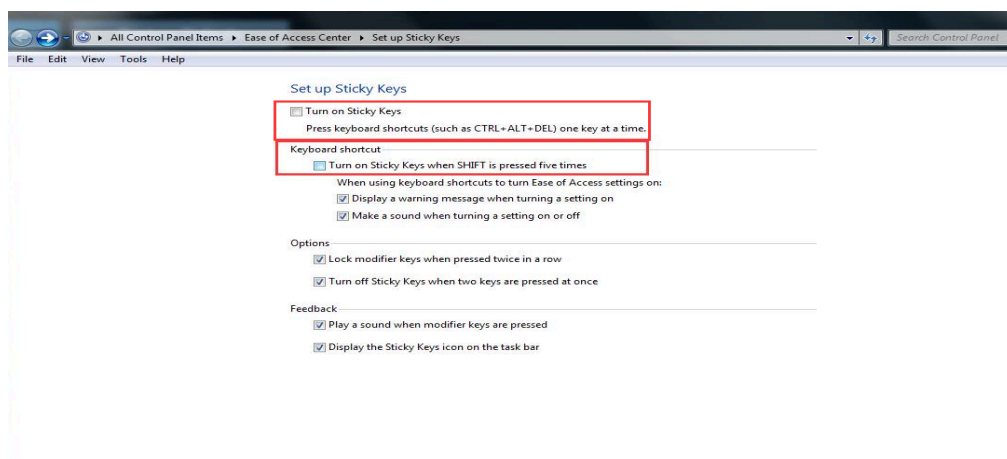
Open the game. Enter the game interface and press Enter to register a game account name. After registering the name, click the space bar on the keyboard to enter the key settings, and set the corresponding relationship according to the corresponding functions below.



If you press the orange key during the setup process and a sticky key reminder appears, you need to turn off the sticky function of the keyboard. Double-click the connection at the arrow position in the picture below, or directly enter the keyboard settings.



After entering the keyboard settings, uncheck the two sticky functions in the picture below, and then click Apply in the lower right corner.



After the sticky function is turned off, you can use the orange guitar buttons normally!

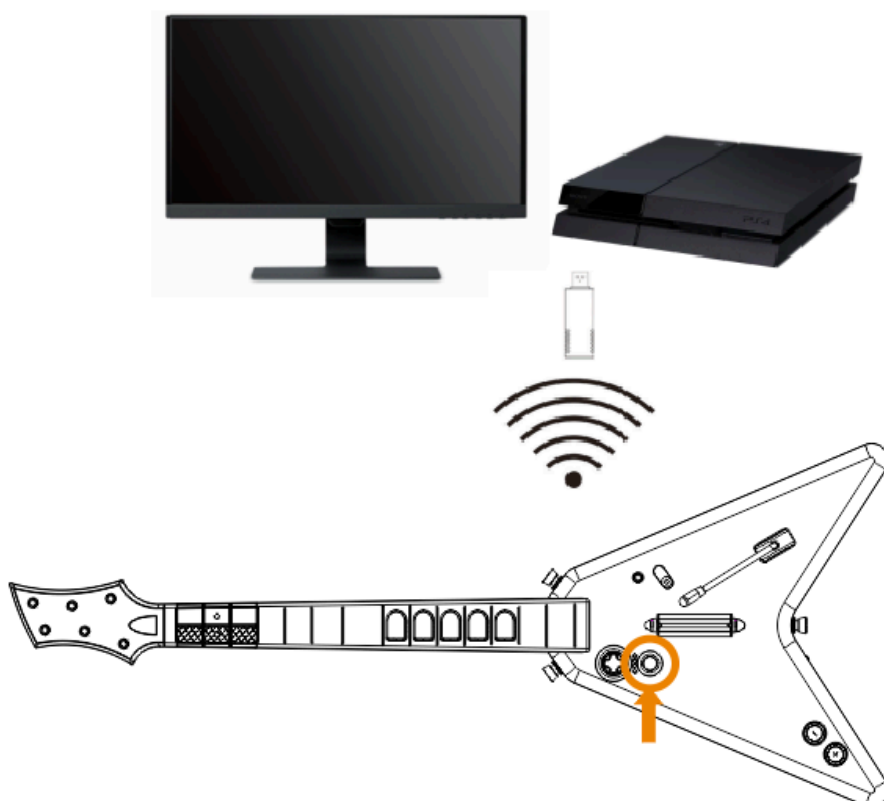
★、PS4 connection

First, turn the power switch of the guitar to the ON state, then insert the receiver into the USB port of the PS4 game console, press the guitar PS button once to pair and connect. After the connection is successful, the red light of the receiver is always on, and the No. 1 light on the guitar end is always on.

(If the connection is unsuccessful, you can unplug the receiver and plug it in again, and press the PS button once to reconnect).

If it enters sleep mode, press the PS button of the guitar to wake up the guitar and connect automatically.

The PS4 platform is currently only compatible with "Guitar Hero Live» game and supports two-player game function.



★. Use of picking keys and five-color buttons:

The five color keys in the game from left to right correspond to the five keys of the guitar: "green", "red", "yellow", "blue", and "orange". When the notes on the game reel follow the music and move to the corresponding position at the bottom of the reel, hold down the corresponding color button on the guitar with your left hand and pluck the guitar string keys with your right hand to play the correct

music. If the correct button is not pressed or the beat is incorrect, wrong noise will be produced.

★.Use of tone down lever

For notes with long notes in the game, just press the pluck key once with your right hand at the beginning of the note, but the left hand cannot release the corresponding keys until the long note ends. Pressing the iron rod before the long note ends will produce different sound effects.

★、Guitar explosion beads

The guitar contains a bead blasting function. When the energy accumulated in the game exceeds 50%, if you quickly raise the guitar, the game reels will change color and the music will change the sound effects.

★.Sleep and wake up

When the guitar and receiver are connected, if there is no button action on the guitar for 5 minutes, the guitar will enter sleep state.

When the guitar is sleeping, you can press the "PS" button on the guitar to wake up the guitar and connect automatically.

★.Battery power voltage indication

When the battery voltage is lower than the preset value, the guitar's LED flashes and a disconnect occurs, reminding you to replace the battery; when it is lower than the lowest preset value, it automatically shuts down.

★、Notes

1. After playing the game on the PC platform, the guitar must be placed flat on the table; note that the PC platform cannot be placed upright. There is a bead blast switch inside the guitar. When the guitar is placed upright, the bead blast switch will be turned on, and the computer may be abnormal. Try to turn off the power switch on the guitar as soon as possible after the game.

2. The guitar has no functions and the indicator light does not light up?

Please check whether the positive and negative poles of the battery inside the guitar are installed correctly.

3. The Rockband game mode of PS3 cannot be used normally?

Please check whether the guitar has been switched to Rockband game mode. If it is successfully switched to Rockband game mode, the ice blue light on the receiver will be on.

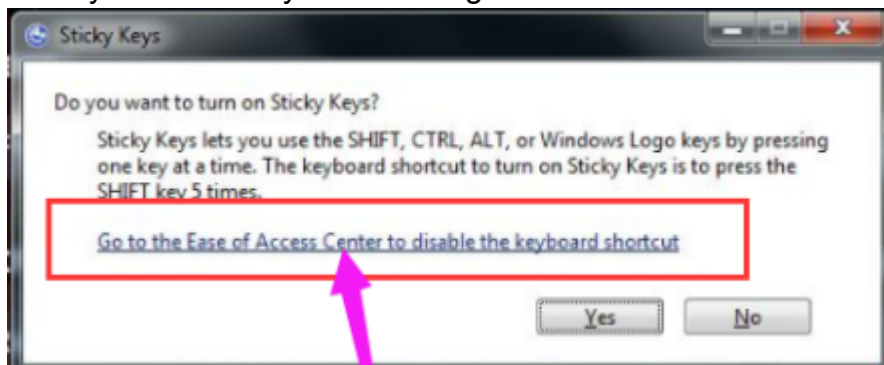
4. The pressure lever has no function or is the pressure lever abnormal?

Do not touch the pressure lever before turning on the guitar's power switch. Please turn off the power switch and turn it on again.

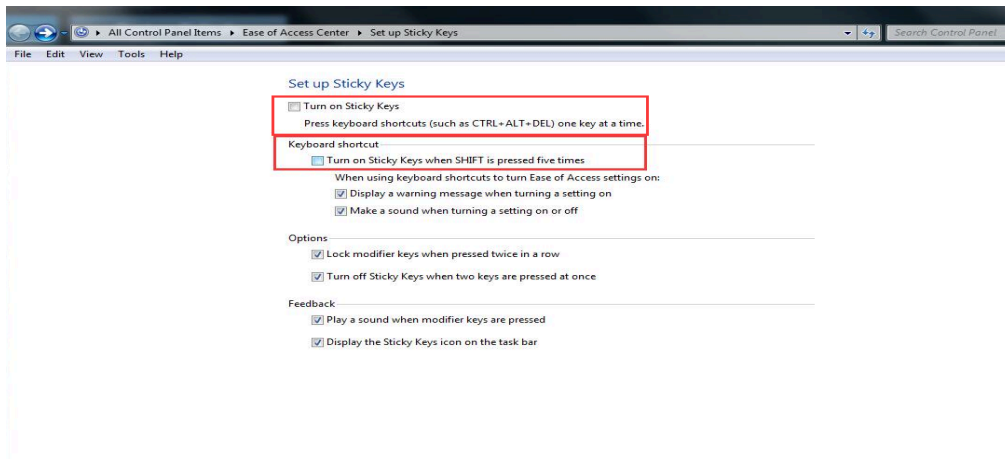
5. It is not supported for use on PS5 game console.

6. The PC side can only be used on Windows 10/Windows 11 systems.

7. If you press the orange key and a sticky key reminder appears, you need to turn off the sticky function of the keyboard. Double-click the connection at the arrow position in the picture below, or directly enter the keyboard settings.



After entering the keyboard settings, uncheck the two sticky functions in the picture below, and then click Apply in the lower right corner.



★, product functions and features

Connection method: 2.4G.

Receiving distance: less than 7 meters.

Compatible platforms: PS4/PS3/PC.

PC compatible system: Windows10/Windows11

Batteries: 4 AA batteries.

Working voltage range: 3V ~ 6V.

On/off mode: flip the power switch.

FCC Warning Statement:

This equipment has been tested and found to comply with the limits for a Class B digital device, pursuant to part 15 of the FCC Rules. These limits are designed to provide reasonable protection against harmful interference in a residential installation. This equipment generates, uses and can radiate radio frequency energy and, if not installed and used in accordance with the instructions, may cause harmful interference to radio communications.

However, there is no guarantee that interference will not occur in a particular installation. If this equipment does cause harmful interference to radio or television reception, which can be determined by turning the equipment off and on, the user is encouraged to try to correct the interference by one or more of the following measures:

- Reorient or relocate the receiving antenna.
- Increase the separation between the equipment and receiver.
- Connect the equipment into an outlet on a circuit different from that to which the receiver is connected.
- Consult the dealer or an experienced radio/TV technician for help.

Caution: Any changes or modifications to this device not explicitly approved by manufacturer could void your authority to operate this equipment.

This device complies with part 15 of the FCC Rules. Operation is subject to the following two conditions: (1) This device may not cause harmful interference, and (2) this device must accept any interference received, including interference that may cause undesired operation.

The device has been evaluated to meet general RF exposure requirement.