

## **Exhibit 18**

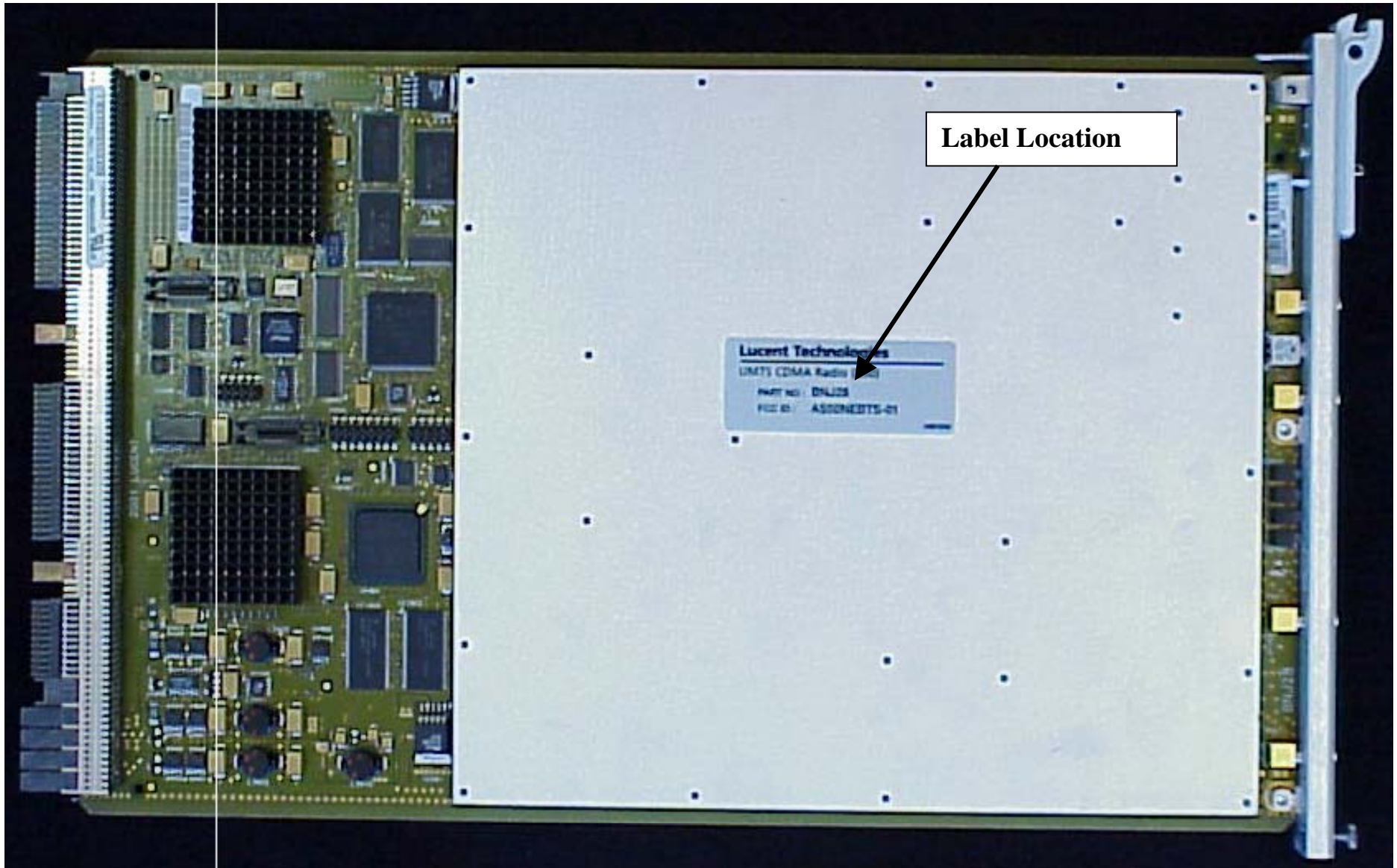
### **SECTION 2.1033(c)(11)**

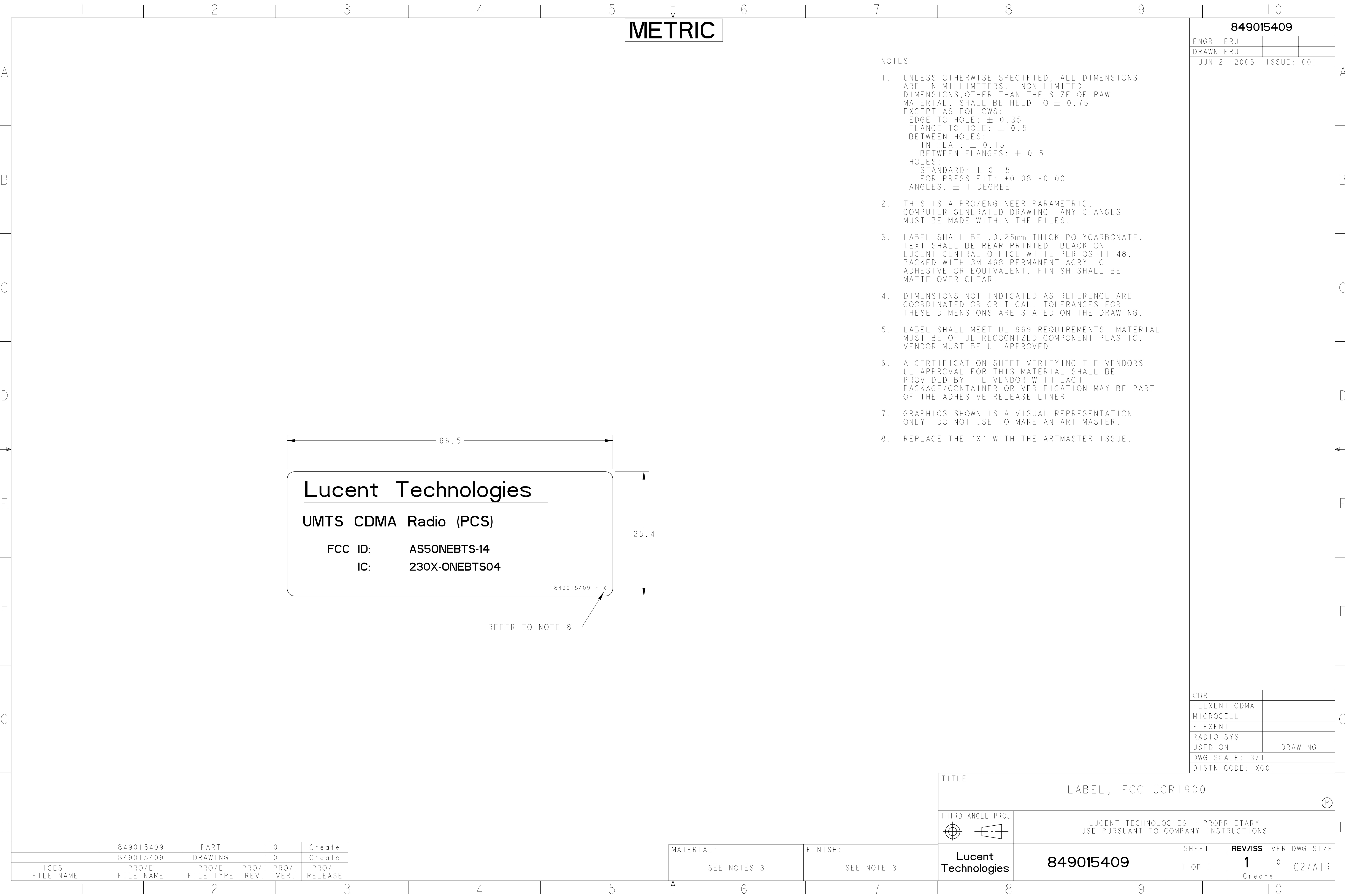
A photograph or drawing of the equipment identification plate or label showing the information to be placed thereon.

### **RESPONSE:**

The equipment identification label information for the **UCR-1900 / FCC ID: AS5ONEBTS-14** is attached along with a JPEG photograph showing the location of the label.

**Exhibit 18: FCC Label Location**





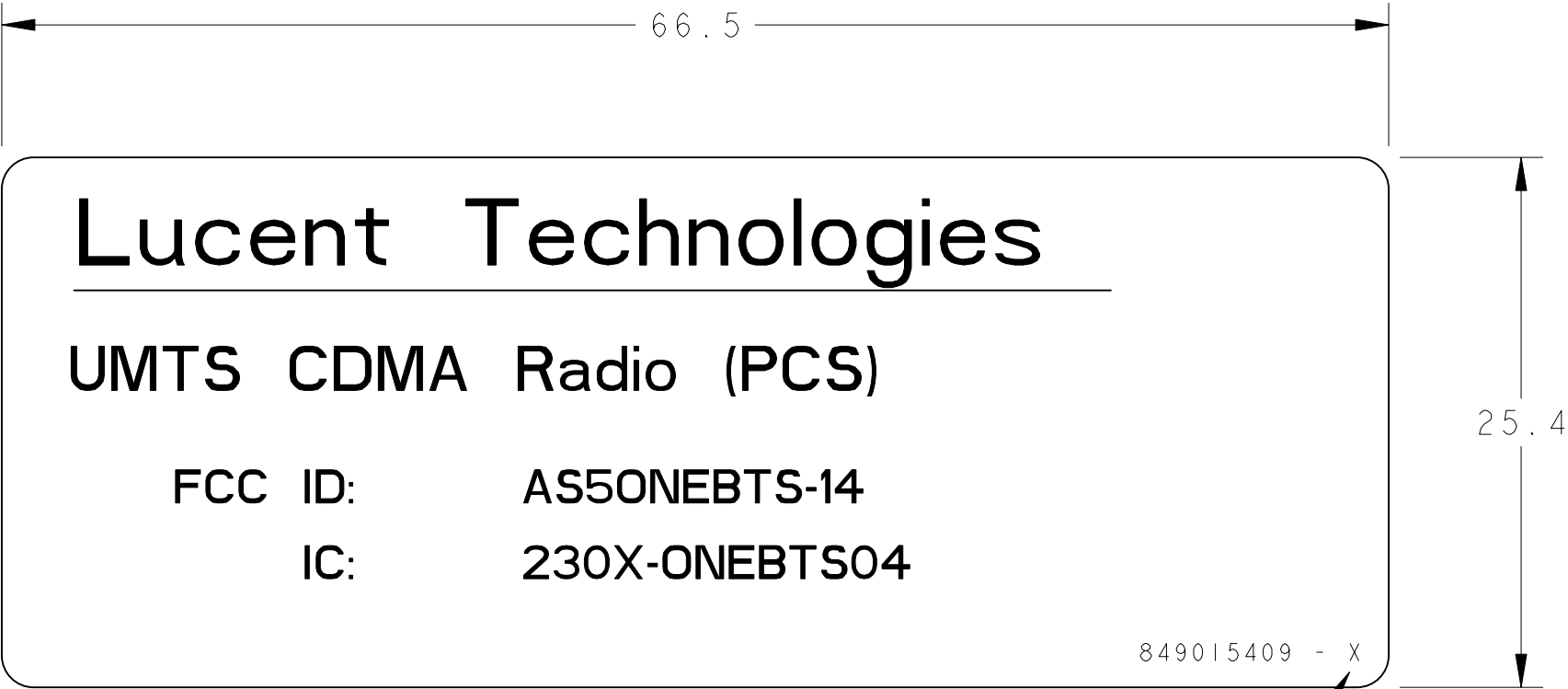
METRIC

849015409

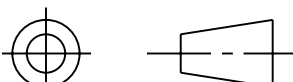
|             |     |            |  |
|-------------|-----|------------|--|
| ENGR        | ERU |            |  |
| DRAWN       | ERU |            |  |
| JUN-21-2005 |     | ISSUE: 001 |  |

NOTES

- UNLESS OTHERWISE SPECIFIED, ALL DIMENSIONS ARE IN MILLIMETERS. NON-LIMITED DIMENSIONS,OTHER THAN THE SIZE OF RAW MATERIAL, SHALL BE HELD TO  $\pm 0.75$  EXCEPT AS FOLLOWS:  
EDGE TO HOLE:  $\pm 0.35$   
FLANGE TO HOLE:  $\pm 0.5$   
BETWEEN HOLES:  
IN FLAT:  $\pm 0.15$   
BETWEEN FLANGES:  $\pm 0.5$   
HOLES:  
STANDARD:  $\pm 0.15$   
FOR PRESS FIT:  $+0.08 -0.00$   
ANGLES:  $\pm 1$  DEGREE
- THIS IS A PRO/ENGINEER PARAMETRIC, COMPUTER-GENERATED DRAWING. ANY CHANGES MUST BE MADE WITHIN THE FILES.
- LABEL SHALL BE .0.25mm THICK POLYCARBONATE. TEXT SHALL BE REAR PRINTED BLACK ON LUCENT CENTRAL OFFICE WHITE PER OS-111148, BACKED WITH 3M 468 PERMANENT ACRYLIC ADHESIVE OR EQUIVALENT. FINISH SHALL BE MATTE OVER CLEAR.
- DIMENSIONS NOT INDICATED AS REFERENCE ARE COORDINATED OR CRITICAL. TOLERANCES FOR THESE DIMENSIONS ARE STATED ON THE DRAWING.
- LABEL SHALL MEET UL 969 REQUIREMENTS. MATERIAL MUST BE OF UL RECOGNIZED COMPONENT PLASTIC. VENDOR MUST BE UL APPROVED.
- A CERTIFICATION SHEET VERIFYING THE VENDORS UL APPROVAL FOR THIS MATERIAL SHALL BE PROVIDED BY THE VENDOR WITH EACH PACKAGE/CONTAINER OR VERIFICATION MAY BE PART OF THE ADHESIVE RELEASE LINER
- GRAPHICS SHOWN IS A VISUAL REPRESENTATION ONLY. DO NOT USE TO MAKE AN ART MASTER.
- REPLACE THE 'X' WITH THE ARTMASTER ISSUE.



|                  |         |
|------------------|---------|
| CBR              |         |
| FLEXENT CDMA     |         |
| MICROCELL        |         |
| FLEXENT          |         |
| RADIO SYS        |         |
| USED ON          | DRAWING |
| DWG SCALE: 3/1   |         |
| DISTN CODE: XG01 |         |

|  |           |   |  |                     |     |          |  |              |
|--|-----------|---|--|---------------------|-----|----------|--|--------------|
| TITLE  |           |   |  | LABEL , FCC UCR1900 |     |          |  | <div>P</div> |
| THIRD ANGLE PROJ   |           | LUCENT TECHNOLOGIES - PROPRIETARY<br>USE PURSUANT TO COMPANY INSTRUCTIONS |  |                     |     |          |  |              |
| <div></div> |           |   |  |                     |     |          |  |              |
| Lucent Technologies  | 849015409 | SHEET   |  | REV/ISS             | VER | DWG SIZE |  |              |
|  |           | 1 OF 1  |  | 1                   | 0   | C2/AIR   |  |              |
|  |           |   |  | Create              |     |          |  |              |

|                   |                    |                    |               |               |                  |
|-------------------|--------------------|--------------------|---------------|---------------|------------------|
|                   | 849015409          | PART               | 1             | 0             | Create           |
|                   | 849015409          | DRAWING            | 1             | 0             | Create           |
| IGES<br>FILE NAME | PRO/E<br>FILE NAME | PRO/E<br>FILE TYPE | PRO/I<br>REV. | PRO/I<br>VER. | PRO/I<br>RELEASE |

|             |            |
|-------------|------------|
| MATERIAL:   | FINISH:    |
| SEE NOTES 3 | SEE NOTE 3 |