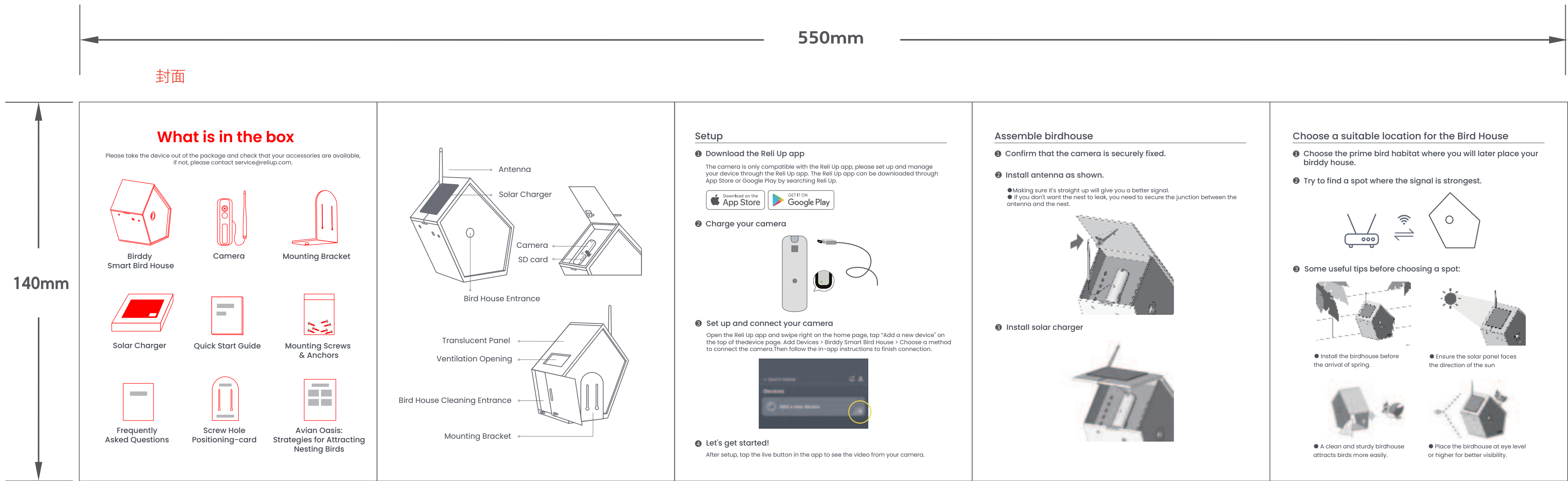


品ID	SKU编码	商品名称	69码	产品型号



<p>Choose a suitable location for the Bird House</p> <p>Keep the birdhouse quiet and away from busy areas, including bird feeders.</p> <p>Secure the bracket to the wall.</p> <p>Finally, place the nest on the bracket.</p>	<p>Specifications</p> <p>Product name: Birdy Smart Bird House Model: F22H9W2</p> <p>Product name: Birdy Smart Bird House Camera Model: M615-102K Power type: F22H9W2 Model: 24102/2744KJ Battery capacity: 7800mAh (V) App supported system: Android 5.0 or iOS 10.0 and above Operating temperature: -20°C-50°C (-4°F-122°F) Wireless Connectivity: Wi-Fi IEEE 802.11n/g/n 2.4GHz</p> <p>WEEE Information</p> <p>All products bearing this symbol are waste electrical and electronic equipment (WEEE) as in directive 2002/96/EC which should not be mixed with unsorted household waste. Instead, you should protect human health and the environment by handing over your waste equipment to a designated collection point for the recovery of waste electrical and electronic equipment, supported by the government or local authorities. Correct disposal and recycling will help prevent potential negative consequences to the environment and human health. Please contact the retailer or local authorities for more information about the location as well as terms and conditions of such collection points.</p>	<p>Warning</p> <p>1. Only use batteries approved by the manufacturer. Replacement of the wrong type of battery may result in failure of safety protection and risk of explosion, fire, etc. 2. Do not put the battery in an extremely high-temperature environment, such as sunlight, fire, microwave oven, oven, etc. High temperatures may cause an explosion or leakage of flammable liquid or gas. 3. Do not disassemble, squeeze or cut the battery. It may cause an explosion. 4. Do not place the battery in extremely low pressure, which may cause the battery to explode or leak flammable liquids and gases. 5. Do not continue to use the battery if it is severely swollen. 6. Do not use old batteries, which can cause chemical burns. 7. If you think the battery may have been overloaded or placed in any part of the body, seek medical help immediately. 8. If the battery compartment is not securely closed, discontinue using the product and keep it away from children. 9. Keep children away from new and used batteries. 10. Please do not throw the battery anywhere. Please comply with the relevant national regulations on the safe disposal of used batteries. 11. If the product contains button batteries, do not swallow. Swallowed button batteries can cause severe internal burns and potentially death within 2 hours.</p> <p>CE Warning:</p> <p>Wang, Jial Technology LLC declares that the radio equipment type F22H9W2 is in compliance with Directive 2014/53/EU. The full text of the EU declaration of conformity is available at the following website: https://www.wjtec.com</p> <p>FCC Verification:</p> <p>FCC Compliance Statement: This device complies with Part 15 of the FCC rules. Operation is subject to the following two conditions: (1) The device may not cause harmful interference, and (2) the device must accept any interference received, including interference that may cause undesired operation. Changes or modifications not expressly approved by the party responsible for compliance could void your authority to operate the equipment. This equipment complies with FCC radiation exposure limits set forth for an uncontrolled environment. The distance between user and products should be no less than 20cm.</p>	<p>Assemble birdhouse</p> <p>This equipment has been tested and found to comply with the limits for a Class B digital device pursuant to Part 15 of the FCC rules. These limits are designed to provide reasonable protection against harmful interference in a residential installation. This equipment generates, uses and can radiate radio frequency energy and, if not installed and used in accordance with the instructions, may cause harmful interference to radio communications. However, there is no guarantee that interference will not occur in a particular installation. If the equipment does cause harmful interference to radio or television reception, which can be determined by turning the equipment off and on, the user is encouraged to try to correct the interference by one or more of the following measures:</p> <ul style="list-style-type: none">— Reorient or relocate the receiving antenna.— Increase the separation between the equipment and receiver.— Connect the equipment into an outlet on a circuit different from that to which the receiver is connected.— Consult the dealer or an experienced radio/TV technician for help. <p>Support</p> <p>Wang, Jial Technology LLC Address: 301 S Market St Suite 400, Wilmington, DE 19801 Website: https://www.wjtec.com/ Contact us: sales@wjtec.com</p> <p>Facebook Twitter @WJ_Technol Instagram @WJ_Technol</p>
---	---	--	---

图纸提供单位

北京疯景科技有限公司

项目名称

Birdy-使用说明书

版本号

V1.1

设计时间

2023.10.26

设计师

吕志伟

材质工艺要求

材质要求:

105g 金东太空梭

制作工序:

双面专色印刷+水性光油+风琴折

工艺要求:

颜色及专色:
纹理要求

专色Pantone Cool Gray 11C

比例 1:1 单位 mm

