



OPERATING MANUAL

LED BULB HKWL-LED01W

I . PRODUCT DESCRIPTION

The LED Bulb is a Wi-Fi based bulb that works perfectly with Amazon Alexa by voice control. You can either control it with Android and iOS based APP by phone, anywhere, at any time.

II . FEATURES

- Dimmable
- Works with Amazon Alexa by voice control
- Remote control via APP anywhere anytime
- Scene control: works with other smart products
- OTA upgrade supported

III . PRECAUTIONS

- Please ask help from the professionals to install, check and maintain the bulb for safety purpose.
- Do not install the bulb above high temperature objects or wet locations
- Do not install the bulb to unstable and unsubstantial ceiling.
- Please shut down the power and contact with the seller in case of any abnormal occurrence



NOTE:

Please install and use by strictly following the instructions to avoid any accidents threatening to personal safety caused by drop of bulb and fire due to electricity shock etc.!

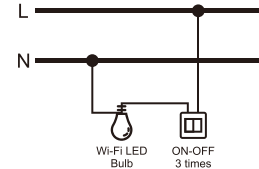
IV . SPECIFICATIONS

Power supply:	100-240VAC +/-10%, 50/60Hz
Standby power:	<1.5W
Rate power:	7W
Luminous:	600LM
Storage temperature:	-40~70°C
Operational temperature:	-10~40°C
Radio protocol:	Wi-Fi
Radio frequency:	2.4GHz—2.484GHz
Range:	About 70m outdoors About 30m indoors (depending on building materials)
Dimensions:	60mm (Φ) x 125mm (L)
Lamp base:	E26/E27

V . INSTALLATION NOTES



Warning: Cut the power off before installation!
Make sure the bulb to be within the Wi-Fi network to ensure a successful connection between the bulb and router.



VI . WI-FI CONFIGURATION INSTRUCTIONS

1. Scan QR code to download and install "Simple Home Connect" APP



Android

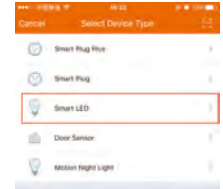


iOS

2. Sign in with cellphone number or email

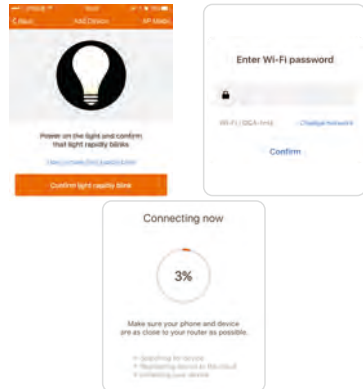


3. Click "+" at the up right corner to add the device.

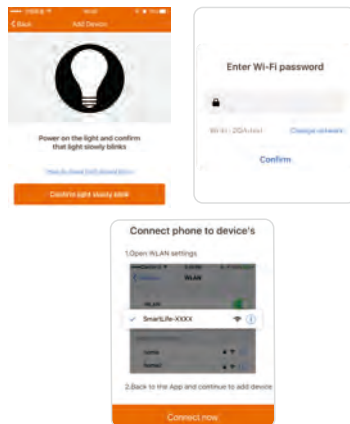


4. Select the mode of Wi-Fi inclusion configuration
(1) There are two methods for Wi-Fi inclusion: EZ (LED rapidly blink) and AP (LED slowly blink). The default setting of this product is EZ mode.
(2) It will automatically switch from EZ mode to AP mode after on/off wall switch 3 times.
(3) The device is included successfully when the LED is solid on.

- For EZ mode, please make sure the device's LED is rapidly flashing. Click "confirm light rapidly blink". Select the Wi-Fi, enter Wi-Fi password and tap "Next".



- For AP mode, please make sure the device's LED light is slowly flashing, click "confirm light slowly blink" to enter the next step.



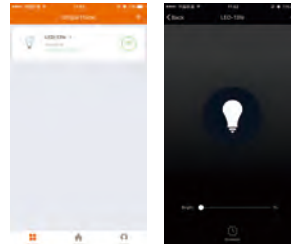
5. The device info will appear on the APP after the device included successfully. (Repeat step 3 and 4 if inclusion failed)



NOTE:

1. Make sure the device and smartphone are in the same network (2.4G supported only);
2. The device can be included via EZ mode or AP mode.

VII . CONTROL DEVICE



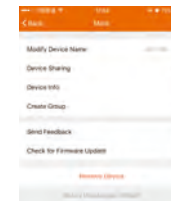
By the APP, this led bulb can be controlled remotely. The specific instructions are as follows:

1. Support the click on the bulb button on the APP to control the device on-off
2. Adjust the brightness of the device by sliding your finger on adjustment-bar
3. Support multi schedules function
4. Support mobile network / Wi-Fi remote control
5. Support device shared

VIII . REMOVE DEVICE

To remove the bulb from the Wi-Fi network:

- (1) Open the Simple Home APP
- (2) Click the icon in the upper right corner, and then click "Remove Device" button
- (3) When remove the device is successful, the LED will start rapidly blink.



NOTE:

Remove procedure will clear the WIFI LED bulb's memory which means erasing all information about WIFI network and configuration.

IX . RESET TO FACTORY DEFAULT

After pairing, select the device to enter "More" at the right upper corner and then tap "Restore Manufacturer Defaults" to restore factory setting and the LED indicator will flash.

X . FCC NOTICE

This device complies with Part 15 of the FCC Rules. Operation is subject to the following two conditions:

- (1) This device may not cause harmful interference
- (2) This device must accept any interference received, including interference that may cause undesired operation.

The manufacturer is not responsible for any radio or tv interference caused by unauthorized modifications or change to this equipment. Such modifications or change could void the user's authority to operate the equipment.

This equipment has been tested and found to comply with the limits for a Class B digital device, pursuant to part 15 of the FCC Rules. These limits are designed to provide reasonable protection against harmful interference in a residential installation. This equipment generates, uses and can radiate radio frequency energy and, if not installed and used in accordance with the instructions, may cause harmful interference to radio communications. However, there is no guarantee that interference will not occur in a particular installation. If this equipment does cause harmful interference to radio or television reception, which can be determined by turning the equipment off and on, the user is encouraged to try to correct the interference by one or more of the following measures:

- Reorient or relocate the receiving antenna.
- Increase the separation between the equipment and receiver.
- Connect the equipment into an outlet on a circuit different from that to which the receiver is connected.
- Consult the dealer or an experienced radio/TV technician for help.

RF warning statement:

To maintain compliance with FCC's RF exposure guidelines, this equipment should be installed and operated with a minimum distance of 20cm between the radiator and your body.