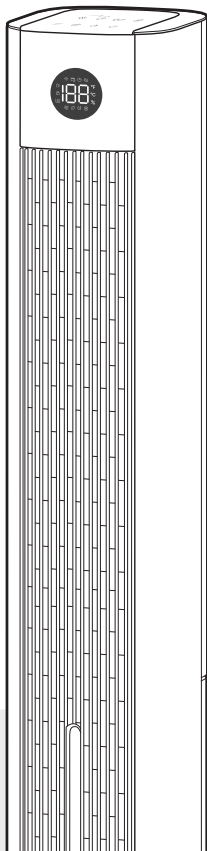


DREO | Air Cooler IceWind 712S

USER MANUAL



//

Thanks for Choosing **DREO!**

Your support means the world to us.
We hope you enjoy our product as much as
we did creating it.

EXTEND YOUR WARRANTY FOR FREE

Scan or visit **dreocom.com/warranty**

To extend your warranty for free by registering your product.
If you have any product issues, we always stand ready to help.



support@dreocom.com



www.dreocom.com



(888) 290-1688

Mon - Fri, 9:00 am-5:00 pm PST/PDT

CONTENTS

01

IMPORTANT
SAFETY INSTRUCTIONS

1-3

02

ASSEMBLING YOUR
AIR COOLER

4-6

03

CONNECTING TO YOUR
AIR COOLER

7

04

KNOWING YOUR
AIR COOLER

8-10

05

USING YOUR AIR
COOLER

11-16

06

CLEANING
AND MAINTENANCE

17-19

07

TROUBLESHOOTING

20

08

DREO CUSTOMER CARE

21-23

IMPORTANT SAFETY INSTRUCTIONS

01



READ ALL CAUTIONARY MARKINGS ON THE APPLIANCE AND SAFETY INSTRUCTIONS IN THE USER MANUAL BEFORE USE AND SAVE THESE INSTRUCTIONS.



Do not cover the air inlet and outlet while in operation.



Do not use the fan near flammables and combustibles.

General Safety

1. Children shall not play with the appliance. Cleaning and maintenance shall not be performed by children without supervision.
2. Use the appliance as described in the user manual only. Any other use not recommended in the user manual may cause fire, electrical shock, or personal injury.
3. This appliance can be used by children aged from 8 years and above and persons with reduced physical, sensory or mental capabilities or lack of experience and knowledge if they have been given supervision or instruction concerning use of the appliance in a safe way and understand the hazards involved. Children shall not play with the appliance. Cleaning and user maintenance shall not be made by children without supervision.

Operation Safety

1. Place the appliance on a flat, dry surface before use.
2. **Do not** immerse in water and any other liquids.
3. **Do not** use the appliance until the base is installed.
4. **Do not** insert your fingers, pencil, and any other objects into the grilles while in operation.
5. **Do not** dismantle, repair, or modify. All servicing should be performed by qualified personnel.
6. Be aware that high humidity levels may encourage the growth of biological organisms in the environment.

7. Do not permit the area around the humidifier to become damp or wet. If dampness occurs, turn the output of the humidifier down. If the humidifier output volume cannot be turned down, use the humidifier intermittently. Do not allow absorbent materials, such as carpeting, curtains, drapes, or tablecloths, to become damp.
8. Unplug the appliance during filling, cleaning, and maintenance.
9. Never leave water in the reservoir when the appliance is not in use.
10. Empty and clean the humidifier before storage. Clean the humidifier before next use.
11. When you do not use the product, please unplug the power plug. Please be careful when inserting or plugging the plug and do not pull the power cord by hand.
12. Do not wind the appliance with power cord; otherwise, the insulating coating of power cord will be damaged easily.
13. Do not let liquid get into the air cooler.
14. After the unit is filled with water, don't tilt or crash it when placing or moving the unit. If it is necessary to move the unit, please move it slowly to avoid overflowing. Tilting the unit during operation is prohibited. If the product is tilted and there's water in it, pull off the power plug immediately. Wait until the unit is completely dry and then you may turn on the unit. Or you may contact professional after-sales personnel to deal with it.
15. When turning on the humidification function, do not operate it at the enclosed space for a long time to prevent high humidity.
16. When turning on the temperature-decreasing temperature, do not operate it at the enclosed space for a long time to prevent high humidity. (Because it will also humidify when decreasing temperature).
17. Do not bend the power cord or put heavy objects on the power cord.
18. Do not share the power socket with other electric appliances to prevent overload. The capacity of power socket should be the same with that of plug of electric appliances. Meanwhile, the plug must be inserted into the socket tightly.
19. Do not place the unit at high-temperature or low-temperature places. In summer, the water in the water tank may be deteriorated easily and generate off-flavor, please change the water in time. If operate the unit in winter when indoor temperature is below 0°C, please use warm water for humidification. After operation is completed, please use a towel to dry the water tank.


Electricity Safety

1. Make sure that the voltage of your electricity supply is the same as that indicated on the appliance.

- 2. Always unplug before cleaning or leaving the appliance unused for a long period of time. Keep your hands dry when plugging/unplugging.
- 3. Do not operate any fan with a damaged cord or plug. Discard fan or return to an authorized service facility for examination and/or repair.
- 4. Do not run cord under carpeting. Do not cover cord with throw rugs, runners, or similar coverings. Do not route cord under furniture or appliances. Arrange cord away from traffic area and where it will not be tripped over.
- 5. WARNING: To reduce the risk of fire, electric shock or injury to persons, do not use replacement parts that have not been recommended by the manufacturer (e.g. parts made at home using a 3D printer).
- 6. WARNING: If the supply cord is damaged, it must be replaced by the manufacturer, its services agent or similarly qualified persons in order to avoid a hazard.
- 7. WARNING: To reduce the risk of fire or electric shock, do not use this appliance with any solid-state speed control device.
- 8. This appliance has a polarized plug (one blade is wider than the other). To reduce the risk of electric shock, this plug is intended to fit in a polarized outlet only one way. If the plug does not fit fully in the outlet, reverse the plug. If it still does not fit, contact a qualified electrician. Do not attempt to defeat this safety feature.
- 9. This product employs overload protection (fuse). A blown fuse indicates an overload or short-circuit situation. If the fuse blows, unplug the product from the outlet. Replace the fuse as per the user servicing instructions (follow product marking for proper fuse rating) and check the product. If the replacement fuse blows, a short-circuit may be present and the product should be discarded or returned to an authorized facility for examination and/or repair.

FOR HOUSEHOLD USE ONLY

Gentle Reminder:



Check the appliance regularly and refer to TROUBLESHOOTING or contact our customer support if it shows any of the following signs:

- Power cord or plug is damaged.
- Loud noise, unusual smell or excessive heat.

Specifications

Model No.	DR-HEC002S
Input	120V~60Hz
Rated Power Input	70W
Battery Type	CR2025 3V

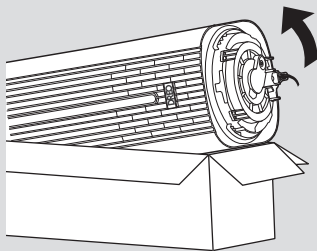
ASSEMBLING YOUR AIR COOLER

02

Assembly Instructions

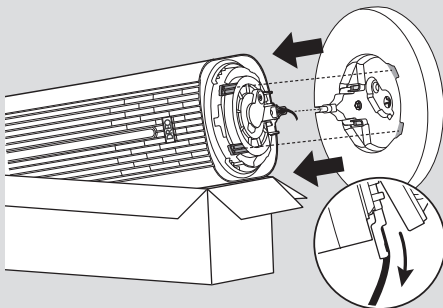
When using the appliance for the first time, remove the wraps and attach the parts by following the steps below.

1



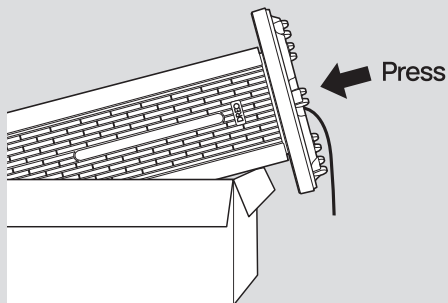
Place the air cooler on the carton box with the front side facing upwards.

2



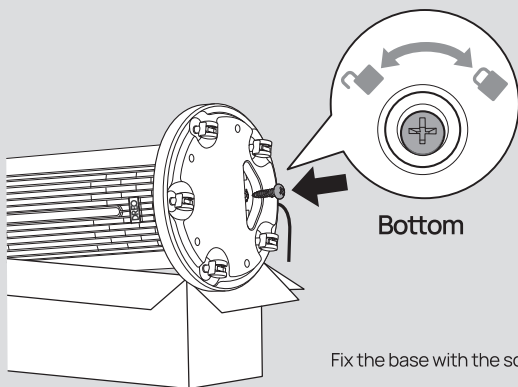
Align the two holes on the base with the two insert pins on the bottom of the air cooler.

3



Press the base until you hear a **click**.

4



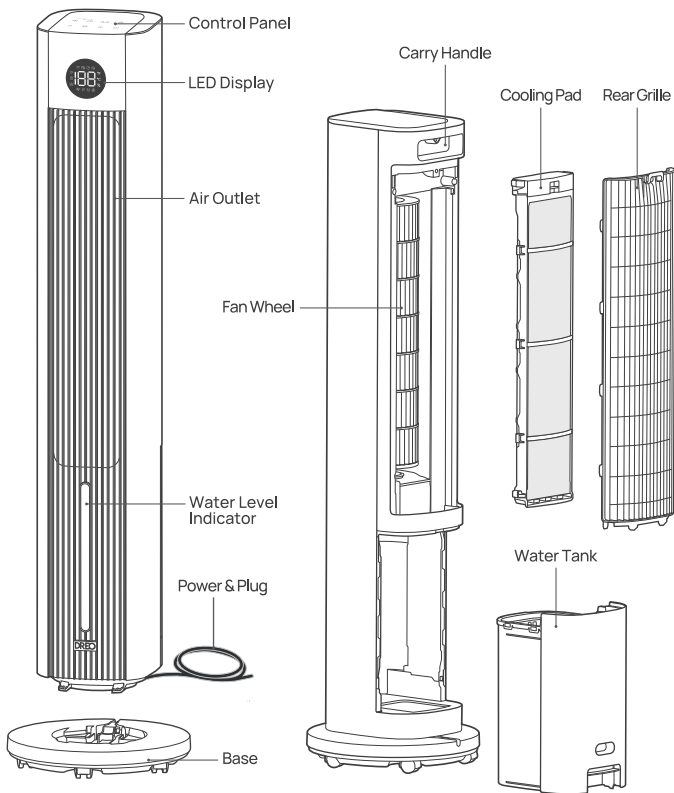
Fix the base with the screw.



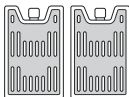
CAUTION

- Do not operate the air cooler if the base has not been installed.
- Make sure to thread the cord through all rear cord keepers.

Package Contents



Remote Control
(battery included)



Ice Packs



User
Manual



Quick
Start
Guide

CONNECTING TO YOUR AIR COOLER

03



Before connecting the appliance to your mobile device, please scan the QR code on the left or go to the app store and search “DREO”, then select and download the app.



Download on the
App Store





GET IT ON
Google Play

Look for “IceWind 712S” when connecting your new air cooler.




You can use the DREO app to connect your air cooler to **Amazon Alexa** or **Google Home**. Please follow the in-app instructions to set up your voice assistant.

NOTE: You must create a DREO account to access voice assistants.

- 1 Launch DREO and sign in or create account by following in-app instructions.
- 2 Enable Bluetooth on your smartphone and plug in your appliance.
- 3 Long press  for 5 seconds to start/reset WiFi connection settings.
(Note: The WiFi icon  will keep flashing when pairing.)
- 4 Tap **+Add Device** and select **IceWind 712S**.
- 5 Follow in-app instructions to complete WiFi connection.
- 6 You're now ready to control the appliance on your app.

Note:

Long press  and  for 10 seconds to turn off WiFi.

Long press  for 10 seconds to unpair WiFi and restore factory settings.

KNOWING YOUR AIR COOLER

04

Control Panel



Mode Button

- Switch between Normal/Natural/Sleep/Auto Mode



Fan Speed Button

- Adjust airflow volume (1-4 levels)



Power Button

- Turn power on/standby



Timer Button

- Select to set a timer (0-12h)



Oscillation button

- Adjust airflow direction
- Long press for 5 seconds to start network settings and device pairing



Humidify Button

- Touch to enable/disable humidify function.
- Long press for 3 seconds to enter target humidity setting, and short press to switch between target humidity levels.



Mute Button

- Touch to mute/unmute the beep sound

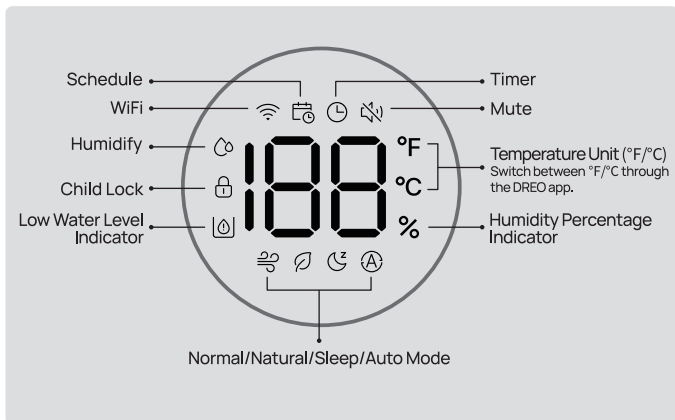


Info Button

- Switch between Humidity Percentage/Room Temperature /Fan Speed

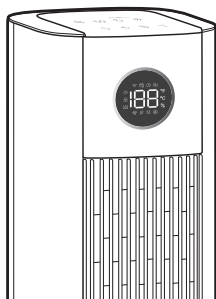
Note: The appliance will turn itself off after 168h if there is no operation or change in settings.

LED display



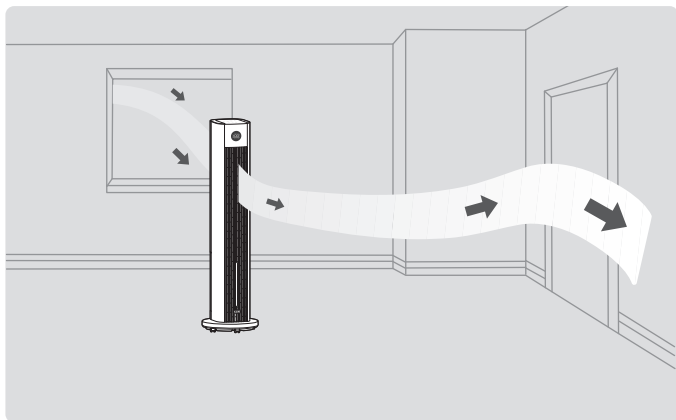
Humidity Indicator Light

The indicator light will change according to your room humidity level.



Light Color	Humidity Level
Blue	$\geq 71\%$
Green	31-70%
Orange	$\leq 30\%$

Getting the Most Out of Your Air Cooler



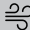

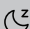

1. It's not an air conditioner. This air cooler cools the air through the evaporation of water. When the hot air passes through the cooling pad, the flowing water extracts the heat and starts to evaporate into fresh and cool air, released by the fan wheel in front.
2. Position the cooler with its back faced to an open window or door for best cooling. Note that putting it in an enclosed space will add up humidity in the room, resulting in reduced humidifying/cooling performance.
3. Add frozen ice packs into the water tank for better cooling.
4. Remove tall obstacles that might block the airflow from the cooler.

Tips:

- Combine with your AC unit to get cooler air throughout the room.
- Use as a tower fan with the humidify function switched off.

USING YOUR AIR COOLER 05

Working Modes

 Normal Mode	Fan runs at constant speed.
 Natural Mode	Fan speed goes up and down intermittently to replicate the natural breeze.
 Sleep Mode	Balance comfort and noise by automatically decreasing fan speed as you fall sleep. Speed decreases every 30 minutes and by two levels at most.
 Auto Mode	Fan automatically increases speed when room temp is higher and decreases speed when temp is lower.

Additional Features





Timer

When the fan is on/standby, touch the timer button repeatedly to set a timer from 0 to 12 hours. When the timer ends, the fan will stop/start running automatically. To cancel, set the time to 0 hour.

Note: When the auto off timer is enabled, display will return to fan speed after 3 seconds.



Child Lock


Long press  and  for 3 seconds to enable/disable Child Lock.

Note: When Child Lock is enabled, you can still control your fan using the remote control or the DREO app.



Memory

If the fan is on standby or disconnected from power, it will operate under the previous settings (except the timer and child lock setting) when it is turned on again.

Long press  for 10 seconds to restore factory settings when the fan is on/standby.



Low Water Alert

- When the humidifying indicator light is on, please add water into the tank and re-enable the humidity function.
- Low water alert will also be activated when the water tank is withdrawn during humidifying.



Firmware Update

Check the firmware version on the DREO app and update regularly for the fan to work more efficiently.

Display will show "UP" during the update process.

Do not operate until the update is completed.



Display Auto Off

- Display turns off after 5 seconds of non-use in dark environment.
- Wake up the display with any button (except Power button).
- To disable this feature, please go to the DREO app.



Auto Brightness

- The display and beep sounds adapt automatically based on the ambient lighting conditions.

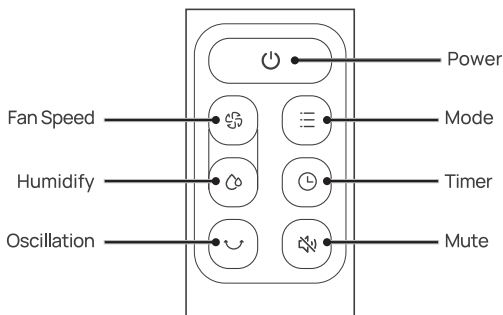
Note: You can enable/disable this feature through the DREO app.



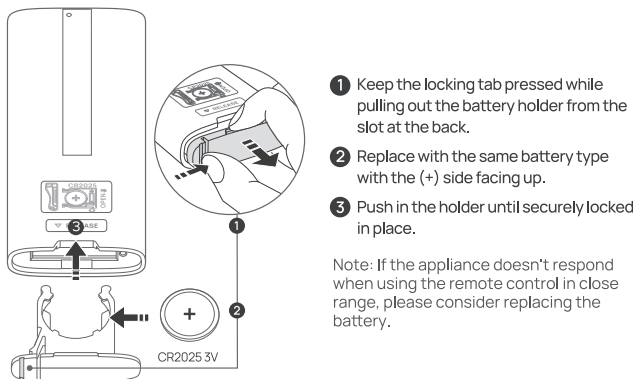
Countdown Display

When long pressing buttons for Factory Reset, WiFi Connection, Child Lock, and Humidify, a countdown will show on the display accordingly.

Remote Control



Battery Replacement



WARNING

Chemical Burn Hazard. Keep batteries away from children.

This product contains a lithium button/coin cell battery. If a new or used lithium button/coin cell battery is swallowed or enters the body, it can cause severe internal burns and can lead to death in as little as 2 hours. Always completely secure the battery compartment. If the battery compartment does not close securely, stop using the product, remove the batteries, and keep it away from children. If you think batteries might have been swallowed or placed inside any part of the body, seek immediate medical attention.



WARNING

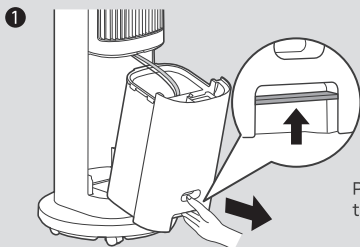
- **INGESTION HAZARD:** This product contains a button cell or coin battery
- **DEATH** or serious injury can occur if ingested.
- A swallowed button cell or coin battery can cause **Internal Chemical Burns** in as little as **2 hours**.
- **KEEP** new and used batteries **OUT OF REACH of CHILDREN**
- **Seek immediate medical attention** if a battery is suspected to be swallowed or inserted inside any part of the body.



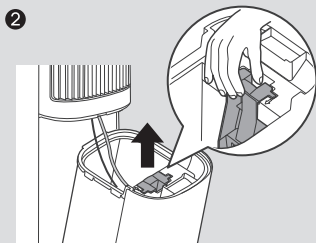
- a) Remove and immediately recycle or dispose of used batteries according to local regulations and keep away from children. Do NOT dispose of batteries in household trash or incinerate.
- b) Even used batteries may cause severe injury or death.
- c) Call a local poison control center for treatment information.
- d) Compatible battery type: CR2025.
- e) Battery nominal voltage: 3.0 Vdc
- f) Non-rechargeable batteries are not to be recharged.
- g) Do not force discharge, recharge, disassemble, heat above (rated temperature: 140 °F) or incinerate. Doing so may result in injury due to venting, leakage or explosion resulting in chemical burns.
- h) Ensure the batteries are installed correctly according to polarity (+ and -).
- i) Do not mix old and new batteries, different brands or types of batteries, such as alkaline, carbon-zinc, or rechargeable batteries.
- j) Remove and immediately recycle or dispose of batteries from equipment not used for an extended period of time according to local regulations.
- k) Always completely secure the battery compartment. If the battery compartment does not close securely, stop using the product, remove the batteries, and keep them away from children.

Filling the Water Tank

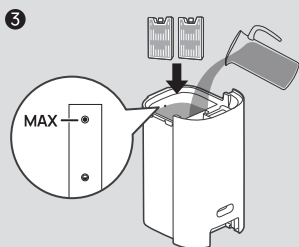
Caution: Disconnect from power source before filling the water tank.



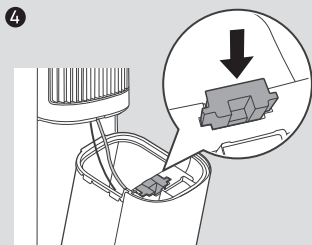
Press between the recesses on the tank and pull the tank out.



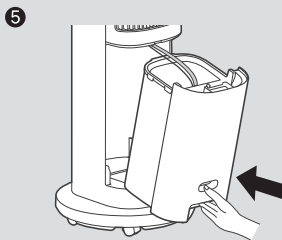
Pull out the water pump.



Add in ice packs (optional), and fill the tank under a water supply, up to the max level.



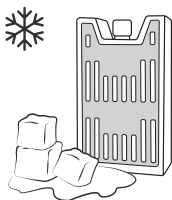
Align the water pump tabs with the tank holes to secure it in place.



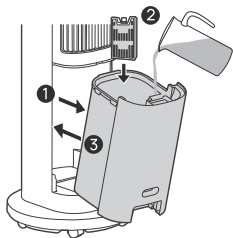
Return the water tank to its original position.

Using the Ice Packs (Optional)

For better cooling, this air cooler includes 2 ice packs that can be frozen and used repeatedly. Turn off the appliance and unplug before adding or removing ice packs.



Freeze in the refrigerator for at least 4 hours.



Pull out the water tank and add in the ice packs. Push the water tank back into place.

 Water+ice packs must not exceed the max level.



WARNING:

- Do not open or puncture the ice pack
- Do not eat or drink the contents inside.

CLEANING AND MAINTENANCE

06



CAUTION:

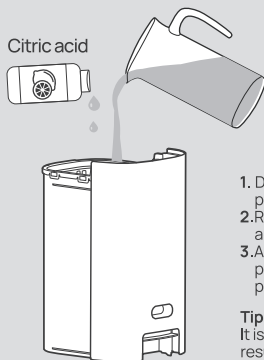
- Always unplug before any cleaning or maintenance.
- Do not immerse in water or get water inside the motor.
- Do not use any chemical agents when cleaning the cooler.
- Store in a cool, dry place and cover it to protect from dust.

Outer Surface

Gently wipe off the dust with a soft, damp cloth.

Water Tank

Clean mineral buildup in the water tank at least once every two weeks to maintain proper hygiene.



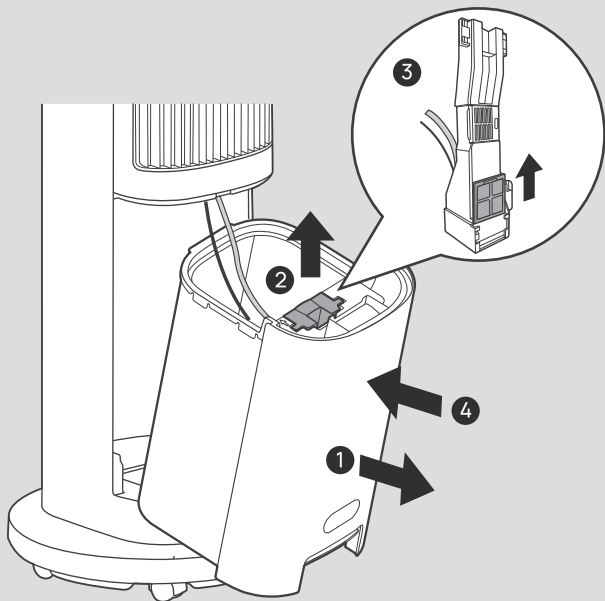
1. Detach the water pump from the water tank (see page 14).
2. Remove the water tank and clean with cleaning agents.
3. After the cleaning, put the water pump back into place. Return the water tank to its original position.

Tip:

It is recommended to use citric acid for best cleaning results.

Filter on Water Pump

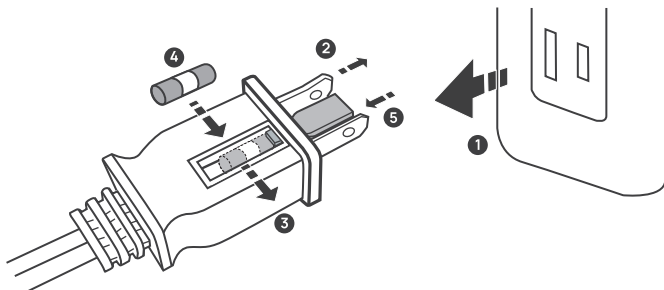
To maintain optimal performance of the water pump, please clean the filter on a regular basis.



1. Pull out the water tank.
2. Remove the water pump.
3. Slide out the filter from the pump and rinse it with water.
4. Slide the filter back and return the tank to its original position.

User Servicing Instructions (Fuse)

This appliance features a fused safety plug that protects against overload or short-circuit situations. If the fuse blows, please cut off power and follow the below instructions or consult a qualified electrician.



- 1 Grasp plug and remove from the receptacle or other outlet device. Do not unplug by pulling on cord.
- 2 Open fuse cover. Slide open fuse access cover on top of attachment plug towards blades.
- 3 Remove fuse carefully. Push the fuse from the other side to remove the fuse.
- 4 Risk of fire. Replace fuse only with 5 Amp.125 Volt fuse.
- 5 Close fuse cover. Slide closed the fuse access cover on top of attachment plug.



WARNING

Risk of fire. Do not replace attachment plug. Contains a safety device (fuse, AFCI, LCDI) that should not be removed. Discard product if the attachment plug is damaged.

My air cooler won't turn on.

Make sure that the cord is connected to a powered outlet and the mains voltage corresponds with the voltage indicated on the cooler.

My air cooler is shaky and wobbling.

Place the air cooler on a flat, level surface. Incorrect assembly might also cause shakiness. Please refer to the assembly instructions in page 4-5. Note that the power cord must be run through all keepers.

My air cooler is making vibration and noise.

Place the air cooler on a flat, level surface. Be sure not to insert anything into the grilles.

My air cooler is not cool enough.

Turn on the humidify function and ensure that the water is above the minimum mark. Put ice packs into the tank for better cooling. Note that this is not an air conditioner. Combine with your AC unit to circulate air more efficiently.

Position the cooler with its back faced to an open window or door for best air cooling, as too much humidity will reduce its humidifying/cooling performance.

Water is dripping from my air cooler.

Ensure the proper installation of the cooling pad, rear grille, and water tank. The water must not exceed the max level.

My humidifying indicator is blinking, but I already added water into the tank.

Make sure to return the tank securely in place and re-enable the humidify function. Note that when the water is low or the tank is withdrawn during humidifying, the humidify function will be disabled for safety protection.

Why does the air blown from the cooler smell

It's advised to clean the water tank with citric acid every two weeks to prevent mold growth, and rinse the cooling pad with a clean towel once a month to prevent dust buildup.

If your problem is not listed or still persists, please contact our Customer Support (see page 23).

Default 12-Month Warranty

This appliance is covered by DREO warranty for 12 months from the date of its original purchase.

Extend Your Warranty

Extend your warranty by registering your new appliance on our website <https://dreowarranty.com>.

The warranty will not apply in cases of:

1. Accident, misuse, or repairs performed by unauthorized personnel.
2. Any unit that has been tampered with or used for commercial purposes.
3. Normal wear and tear of wearable parts.
4. Use of force, damage caused by external influences.
5. Damage caused by non-observance of the User Manual, e.g. connection to an unsuitable mains supply or noncompliance with the instructions.
6. Partially or completely dismantled appliances.
7. Defects caused by or resulting from damages from shipping or from repairs, service or alteration to the product or any of its parts that have been performed by a repair person not authorized by DREO.

We can only provide after-sales service for products that are sold by DREO or DREO authorized retailers and distributors. If you have purchased your unit from a different place, please contact your seller for return and warranty issues.

FCC Statement

This device complies with Part 15 of the FCC Rules.

Operation is subject to the following two conditions: (1) this device may not cause harmful interference, and (2) this device must accept any interference received, including interference that may cause undesired operation.

"Please note that changes or modifications of this product is not expressly approved by the party responsible for compliance could void the user's authority to operate the equipment."

NOTE: This equipment has been tested and found to comply with the limits for a Class B digital device, pursuant to Part 15 of the FCC Rules. These limits are designed to provide reasonable protection against harmful interference in a residential installation. This equipment generates, uses and can radiate radio frequency energy and, if not installed and used in accordance with the instructions, may cause harmful interference to radio communications. However, there is no guarantee that interference will not occur in a particular installation.

"If this equipment does cause harmful interference to radio or television reception, which can be determined by turning the equipment off and on, the user is encouraged to try to correct the interference by one or more of the following measures:

- Reorient or relocate the receiving antenna.
- Increase the separation between the equipment and receiver.
- Connect the equipment into an outlet on a circuit different from that to which the receiver is connected.
- Consult the dealer or an experienced radio/TV technician for help.

This equipment complies with FCC radiation exposure limits set forth for an uncontrolled environment. This equipment should be installed and operated with a minimum distance of 20cm between the radiator & your body. This transmitter must not be co-located or operating in conjunction with any other antenna or transmitter.

Model No.:DR-HEC002S
Rev_1.0_EN

We're Here to Help!

 **(888) 290-1688** Mon - Fri, 9:00 am-5:00 pm PST/PDT

 **support@dreo.com**

 **www.dreo.com**

 **Shenzhen Hesung Innovation Technology Co., LTD**

 **26F, Bldg A7, Creative City, Shenzhen, China**



MADE IN CHINA



Intertek

www.dreo.com

Looking for help?

Contact us to get expert support.



support@dreo.com



[\(888\) 290-1688](tel:(888)290-1688)



www.dreo.com

Mon - Fri, 9:00 am-5:00 pm PST/PDT