

YS

THERMAL IMAGING CAMERA



Shenzhen Shi Yutong Technology Co., LTD



1. Objective lens/Protective Cap	2. Objective focusing ring	3. Power on/Standby button
4. Recording button REC	5. Navigation button UP	6. Menu button
7. Navigation button DOWN	8. Eyepiece focusing ring	9. Eyeshade
10. Laser Red dot	11. Storage card compartment	12. Charging port/TV OUT
13. Fixture hole for detachable accessories		

Packaging Accessories

- YS Handheld thermal scope
- Type-c cable
- Manual
- 5V2A adapter

Start

Power On and Image Settings

- Short press the ON/OFF (3) button to power on.
- Rotate the eyepiece adjustment ring (8) to get a clear image of the icons on the display.
- Rotate the lens focusing ring (2) to get a clear image of the observed object.
- Short press the (5) button to select the operating palettes (White Hot, Target Highlight, Red Hot, Black Hot, Fusion Modes).
- Short press the (7) button to select the digital magnification (1x, 2x, 4x, 6x, 8x).
- Short press the (6) button to enter the menu to select the appropriate parameter.
- Long press the ON/OFF (3) button, within 3 seconds the screen off, for 3 seconds to power off. The indicator light of buttons will be off after power off.

Button

YS button detailed navigation



Power button

Short press to power on. Long press for 3 seconds to power off. When powered on, press and hold the power button for 1-3 seconds, when the sleep icon appears on the screen, it is regarded as standby mode, and a short press under the standby mode can activate the device.

*Short press to switch the shutter.



Recording button REC

Short press to take pictures (press it when the camera function is not turned on). Reminding: Please turn on the camera and video function first). Long press the button to record the video (when the camera function is not turned on, Reminding: Please turn on the camera and video function first).



Navigation button UP

Short press to select up, when there is no menu, it is to switch the display mode.



M Menu button

Short press to enter the MENU, press up and down to move MENU options, short press MENU to enter the secondary MENU, short press MENU to confirm. Long press to turn on/off laser red dot, long press to return to the previous menu in menu mode.



Navigation button DOWN

Short press to select down, when there is no menu, it is to switch magnification 1x, 2x, 4x, 6x, 8x. Long press to turn distance measuring on or off.

Menu Function

YS menu detailed functions

1. Operating Modes

Providing 5 options (White Hot, Target Highlight, Black Hot, Red Hot, Fusion), default as White hot.



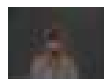
White Hot



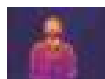
Target Highlight



Black Hot



Red Hot



Fusion

2. Camera/Video Output

Turn on or turn off

3. WIFI

1. Select "On" or "Off" on the submenu, turn on the WIFI in the menu, then open the WIFI of the mobile phone and the APP, and find the MAC address name of the WIFI of the mobile phone Sytong-Thermal and password Confirm 12345678, enter the password to see if the connection is normal (WIFI is off by default).
2. Live images can be observed by APP after WIFI connection.

4. Hot Tracking

Click the M button to enter the hot tracking in the main menu, choose to enable or disable the hotspot tracking function.

5. OLED Brightness

Select "OLED Brightness" with the cursor and press the "OK" key to call out the sub-menu, select "Super Dark", "Dark", "Normal", "Bright" and "Super Bright" on the sub-menu to adjust the brightness of the display screen. The default is normal.

6. Target Brightness

Click the M button to enter the menu brightness. There are 5 options, and the screen will change accordingly if you choose any option.

7. Contrast Ratio

Click the M button to enter the menu Contrast Ratio. There are 10 options, and the screen will change accordingly if you choose any option.

8. Image Detail Boost

The image resolution of a photo or video comparison varies with any option 1-4. The default is 1.

9. Date/Time

Select "Date/Time" MENU, short press MENU to enter sub-options, short press photo button to move options, short press up and down button to adjust the value, short press MENU to save and exit after adjustment. Long press MENU to exit without saving.

10.Language

Click the M button to enter the menu language setting, set the language and confirm.

11.Record Audio

Select "Record Audio" and press "M" to call out the submenu. Select "On" or "Off" on the submenu, and confirm whether the recording is with voice and audio recording.

12.Format

Enter into sub menu of Format, confirm or cancel with a brief press of MENU button.Please choose to confirm carefully! Data cannot be recovered after deletion!

13.Auto Power-Off

Options: 3 minutes,5 minutes, off, off by default, 3 minutes or 5 minutes after the startup can be selected automatic shutdown

14.Default Setting

Select "Default Setting" with the cursor and press "OK" to call out the submenu. Select "Confirm" or "Cancel" on the submenu to restore the default settings. After confirmation, the factory default settings will be restored. Please operate with caution.

15.Pixel Cure

Enter the pixel cure under the main menu, click M button to choose the option.
Please cover the lens cap before repair,follow the guide,short press Menu to EXIT, long press the menu to SAVE.

16.Version

APP Connection



Download APP by Scanning the QR code according to the mobile phone system.



Download APP by Scanning the QR code according to the mobile phone system.



Enter into the menu and turn on WIFI.



Enter into APP



choose with "Sytong ..." to connect WIFI (password: 12345678)

YS03

YS03 detailed parameter data sheet

Sensor (military grade)

Type	non refroidi	Resolution, pixels	384x288 super sensitive
Frame rate	50 Hz	Pixel size	12µm
NETD	<30mK		

Optical characteristics

Objective lens	f15/25mm, F1.0	Magnification	1.2x/2.0x
Continuous digital zoom	1x / 2x / 4 x/ 6x/ 8x	Eye relief	30 mm
Dioptre adjustment	+5/-5 D	Close-up range	5m

Display

Operating modes	Black Hot, White Hot, Red Hot, Fusion, Target Highlight	Type / Resolution	0.39 inch / AMOLED / 1024X768
-----------------	---	-------------------	-------------------------------

Operational characteristics

Hot tracking	yes	Waterproof rating	IP65
--------------	-----	-------------------	------

Power supply	3-4.2 V	Battery	Li-Ion Battery Pack / 6000mAh / DC 3.7V
External power supply	5V (USB)	Operating time (at t=22°C)	9 hours
Operating temperature	-20°C to + 50°C	Dimensions	210X64X63mm
Weight	570g		

Video recorder

Video / photo resolution	1024x768	Video / photo format	.mp4 / .jpg
Memory type	TF card(FAT32), max.128G		

Wifi channel

Frequency	2.4GHz	Standard	802.11 b/g
Line-of-sight reception range	15m		

YS06

YS06 detailed parameter data sheet

Sensor (military grade)

Type	non refroidi	Resolution, pixels	640x480 super sensitive
Frame rate	50 Hz	Pixel size	12µm
NETD	<30mK		

Optical characteristics

Objective lens	f25/35mm, F1.0/F1.2	Magnification	1.2x/1.7x
Continuous digital zoom	1x / 2x / 4 x/ 6x/ 8x	Eye relief	30 mm
Dioptre adjustment	+5/-5 D	Close-up range	5m

Display

Operating modes	Black Hot, White Hot, Red Hot, Fusion, Target Highlight	Type / Resolution	0.39 inch / AMOLED / 1024X768
-----------------	---	-------------------	-------------------------------

Operational characteristics

Hot tracking	yes	Waterproof rating	IP65
--------------	-----	-------------------	------

Power supply	3-4.2 V	Battery	Li-Ion Battery Pack / 6000mAh / DC 3.7V
External power supply	5V (USB)	Operating time (at t=22°C)	9 hours
Operating temperature	-20°C to + 50°C	Dimensions	210X64X63mm
Weight	570g		

Video recorder

Video / photo resolution	1024x768	Video / photo format	.mp4 / .jpg
Memory type	TF card(FAT32), max.128G		

Wifi channel

Frequency	2.4GHz	Standard	802.11 b/g
Line-of-sight reception range	15m		

|Notice!

Accessories Use Reminder

Power Adapter

Only applicable to charging voltage below 5v/2A.

Laser pointer adjustment

Press the menu button to turn on/off the red dot indicator light and adjust the position of the red dot indicator light through the red dot indicator adjustment port of the inner hexagon wrench.

TF card

Whether TF card can be recognized normally, supported (8-128G), smooth and free of delay, connect USB power supply to boot, open video recording in the menu, and the flash of video label means automatic recording.

Note:Our products are fixed on the equipment and controlled by WiFi connected app. They can't be close to human eyes and will be damaged. They can only be used fixedly, with a distance of more than 20cm from human body.

This product can only be used in legal fields such as scientific research, observation, emergency search and it is strictly prohibited to be used on illegal purposes. Our company reserves the right to pursue legal liability of illegal users.



Follow Sytong official account to learn more

FCC Warning Statement: Changes or modifications to this unit not expressly approved by the party responsible for compliance could void the user's authority to operate the equipment. This equipment has been tested and found to comply with the limits for a Class B digital device, pursuant to Part 15 of the FCC Rules. These limits are designed to provide reasonable protection against harmful interference in a residential installation. This equipment generates, uses and can radiate radio frequency energy and, if not installed and used in accordance with the instructions, may cause harmful interference to radio communications.

However, there is no guarantee that interference will not occur in a particular installation. If this equipment does cause harmful interference to radio or television reception, which can be determined by turning the equipment off and on, the user is encouraged to try to correct the interference by one or more of the following measures:

- Reorient or relocate the receiving antenna.
- Increase the separation between the equipment and receiver.
- Connect the equipment into an outlet on a circuit different from that to which the receiver is connected.
- Consult the dealer or an experienced radio/TV technician for help.

This device complies with Part 15 of the FCC Rules. Operation is subject to the following two conditions: (1) this device may not cause harmful interference, and (2) this device must accept any interference received, including interference that may cause undesired operation.

FCC Radiation Exposure Statement

The device has been evaluated to meet general RF exposure requirement. The device can be used in portable exposure condition without restriction.