

SXP-800S

SAM(835MHz) Phantom; Flat Section; Probe: ET3DV6 - SN1702; ConvF(6.60,6.60,6.60);

835 MHz Body: $\sigma = 1.00$ mho/m $\epsilon_r = 52.9$ $\rho = 1.00$ g/cm³; Crest factor: 1.0;

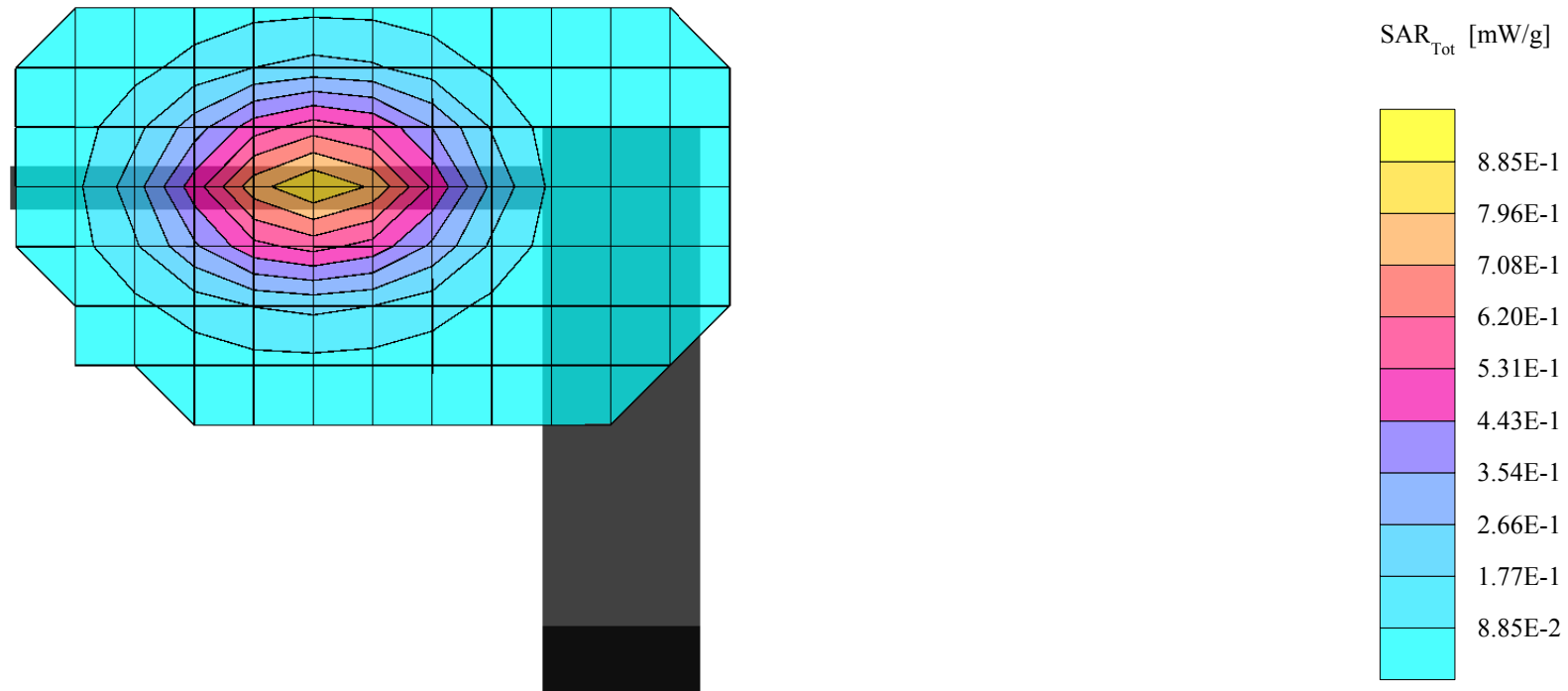
SAR (1g): 0.824 mW/g, SAR (10g): 0.576 mW/g;

FCC ID: R2NSXP-800S

CDMA Mode, Ch.1013[824.70MHz]; Standard Battery; Ambient Temp = 23 °C/Meas. Tissue Temp. = 21 °C

Conducted Power = 24dBm; Spacing = 2.5cm From antenna to flat phantom; Antenna Fixed

Test Date -- April 16, 2004 [FCC/OET Bulletin65 - Supplement C, July 2001]



SXP-800S

SAM(835MHz) Phantom; Flat Section; Probe: ET3DV6 - SN1702; ConvF(6.60,6.60,6.60);

835 MHz Body: $\sigma = 1.00$ mho/m $\epsilon_r = 52.9$ $\rho = 1.00$ g/cm³; Crest factor: 1.0;

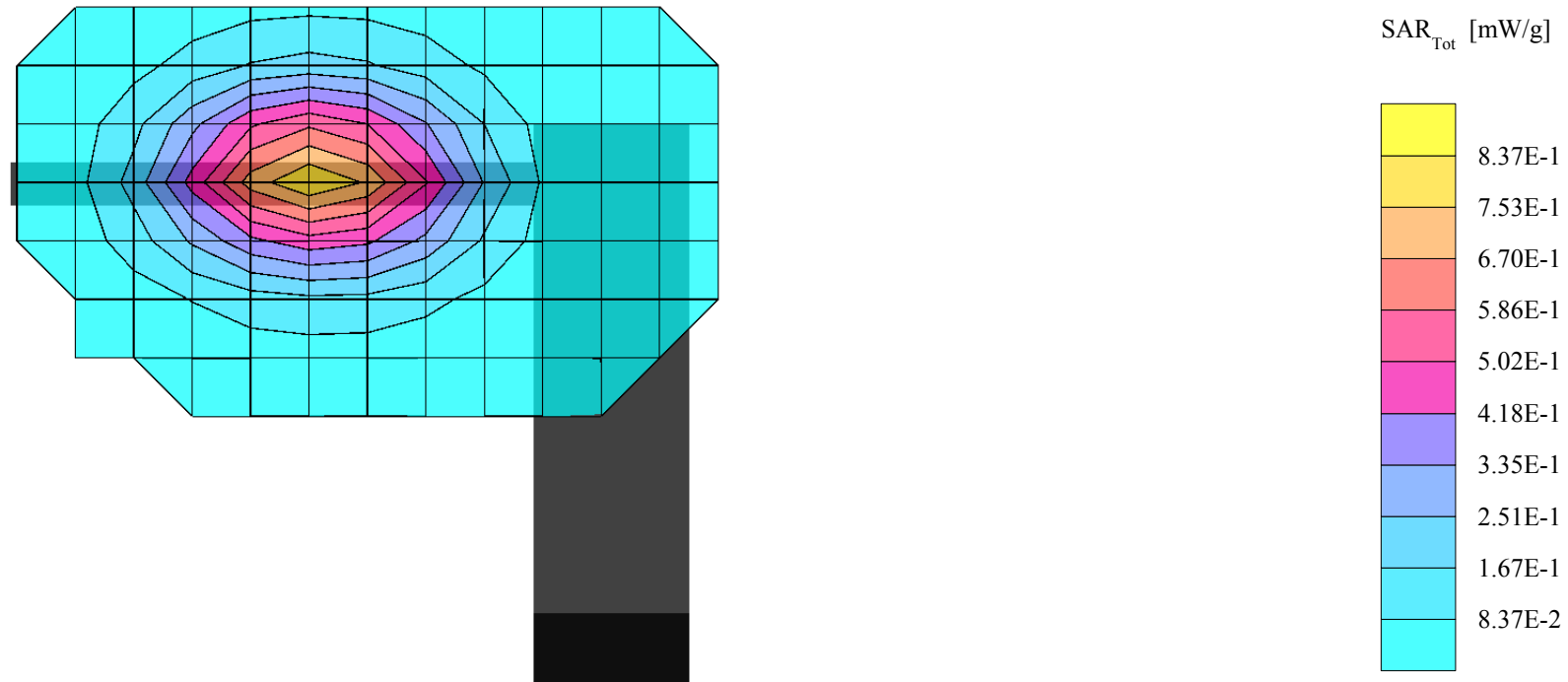
SAR (1g): 0.781 mW/g, SAR (10g): 0.541 mW/g;

FCC ID: R2NSXP-800S

CDMA Mode, Ch.0384[836.52MHz]; Standard Battery; Ambient Temp = 23 °C/Meas. Tissue Temp. = 21 °C

Conducted Power = 24dBm; Spacing = 2.5cm From antenna to flat phantom; Antenna Fixed

Test Date -- April 16, 2004 [FCC/OET Bulletin65 - Supplement C, July 2001]



SXP-800S

SAM(835MHz) Phantom; Flat Section; Probe: ET3DV6 - SN1702; ConvF(6.60,6.60,6.60);

835 MHz Body: $\sigma = 1.00$ mho/m $\epsilon_r = 52.9$ $\rho = 1.00$ g/cm³; Crest factor: 1.0;

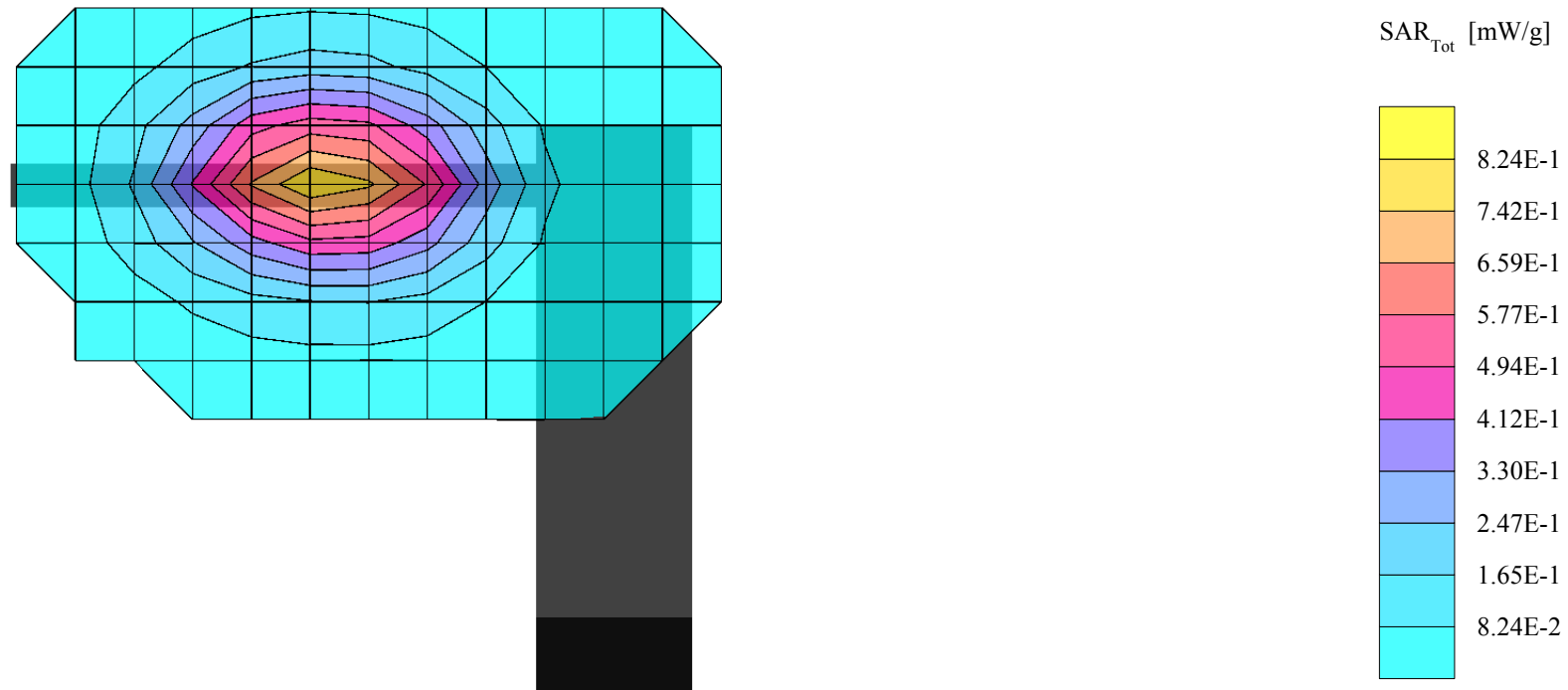
SAR (1g): 0.772 mW/g, SAR (10g): 0.537 mW/g;

FCC ID: R2NSXP-800S

CDMA Mode, Ch.0777[848.31MHz]; Standard Battery; Ambient Temp = 23 °C/Meas. Tissue Temp. = 21 °C

Conducted Power = 24dBm; Spacing = 2.5cm From antenna to flat phantom; Antenna Fixed

Test Date -- April 16, 2004 [FCC/OET Bulletin65 - Supplement C, July 2001]



SXP-800S

SAM(835MHz) Phantom; Section; Probe: ET3DV6 - SN1702; ConvF(6.60,6.60,6.60);

835 MHz Body: $\sigma = 1.00$ mho/m $\epsilon_r = 52.9$ $\rho = 1.00$ g/cm³; Crest factor: 1.0;

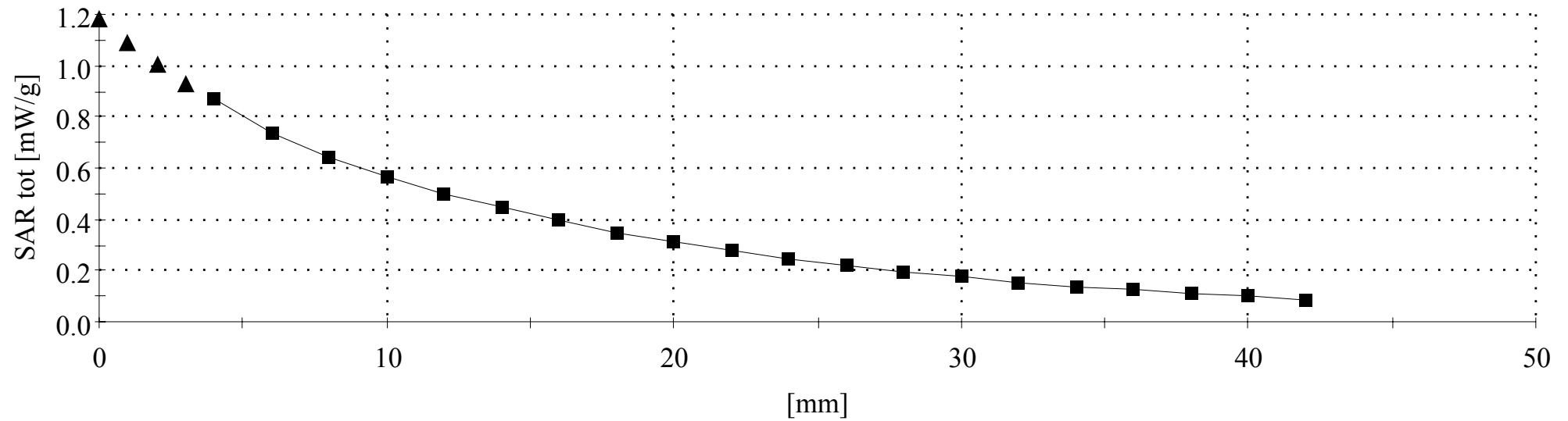
;

FCC ID: R2NSXP-800S

CDMA Mode, Ch.1013[824.70MHz]; Standard Battery; Ambient Temp = 23 °C/Meas. Tissue Temp. = 21 °C

Conducted Power = 24dBm; Spacing = 2.5cm From antenna to flat phantom; Antenna Fixed

Test Date -- April 16, 2004 [FCC/OET Bulletin65 - Supplement C, July 2001]



SXP-800S

SAM(835MHz) Phantom; Flat Section; Probe: ET3DV6 - SN1702; ConvF(6.60,6.60,6.60);

835 MHz Body: $\sigma = 1.00$ mho/m $\epsilon_r = 52.9$ $\rho = 1.00$ g/cm³; Crest factor: 1.0;

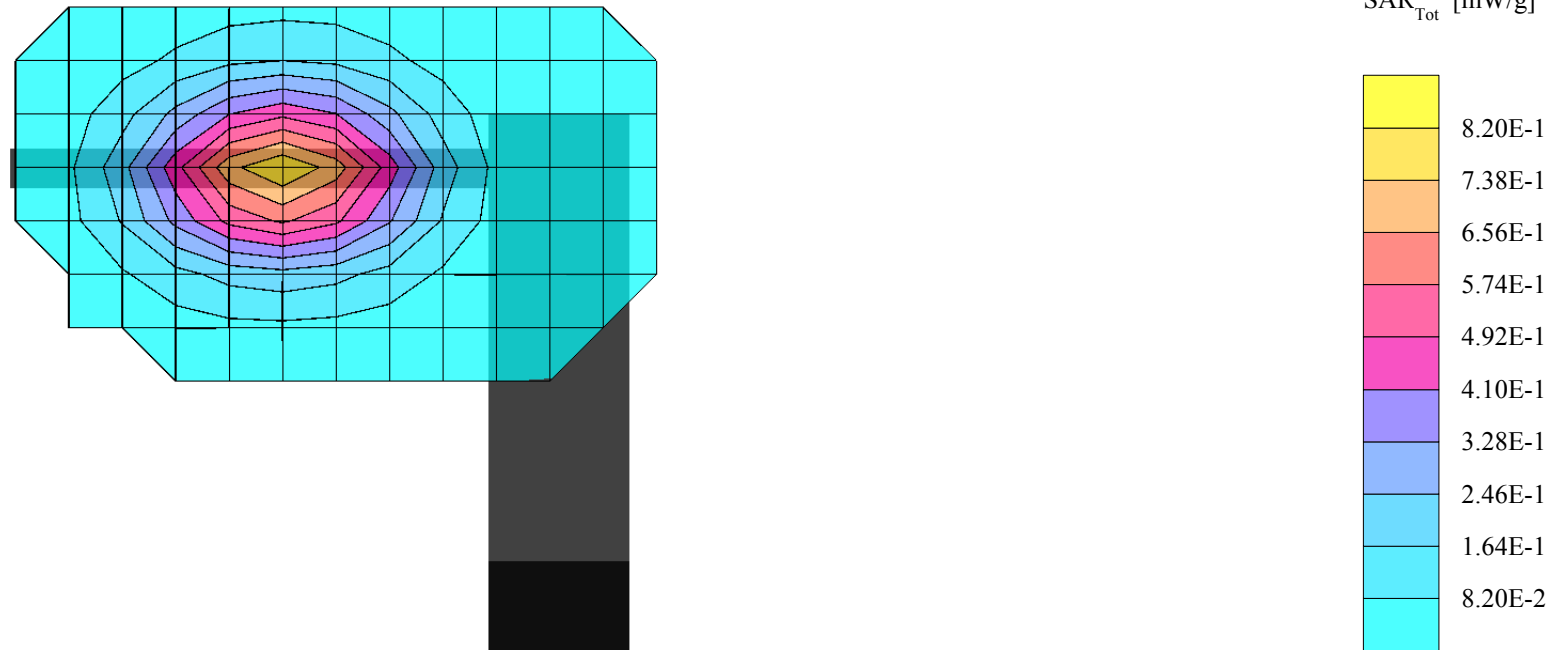
SAR (1g): 0.753 mW/g, SAR (10g): 0.525 mW/g;

FCC ID: R2NSXP-800S

CDMA Mode, Ch.1013[824.70MHz]; With Charger; Ambient Temp = 23 °C/Meas. Tissue Temp. = 21 °C

Conducted Power = 24dBm; Spacing = 2.5cm From antenna to flat phantom; Antenna Fixed

Test Date -- April 16, 2004 [FCC/OET Bulletin65 - Supplement C, July 2001]

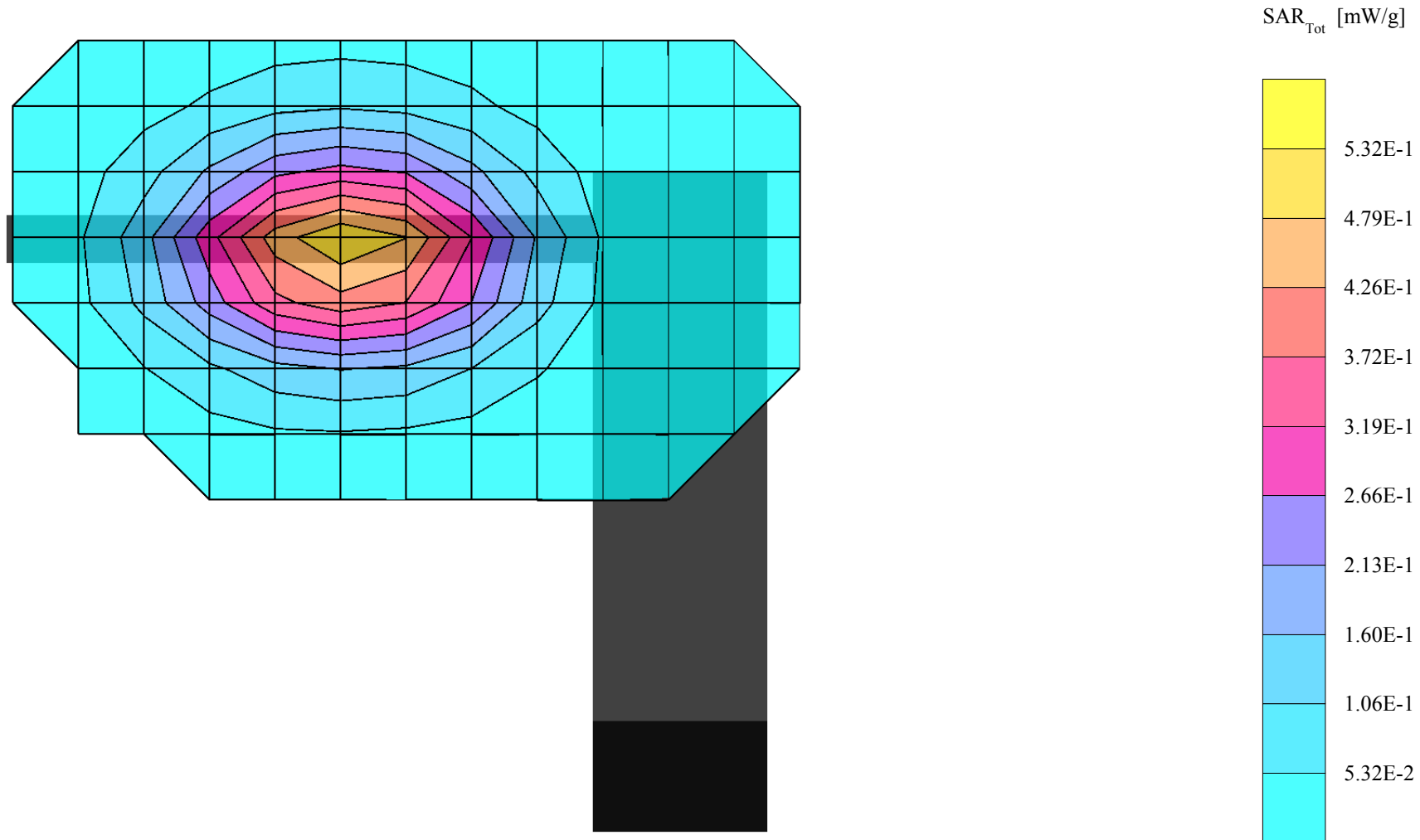


SXP-800

SAM(835MHz) Phantom; Flat Section; Probe: ET3DV6 - SN1702; ConvF(6.60,6.60,6.60);
835 MHz Body: $\sigma = 1.00$ mho/m $\epsilon_r = 52.9$ $\rho = 1.00$ g/cm³; Crest factor: 1.0;
SAR (1g): 0.513 mW/g, SAR (10g): 0.356 mW/g;

FCC ID: R2NSXP-800S

CDMA Mode, Ch.0384[836.52MHz]; With Charger; Ambient Temp = 23 °C/Meas. Tissue Temp. = 21 °C
Conducted Power = 24dBm; Spacing = 2.5cm From antenna to flat phantom; Antenna Fixed
Test Date -- April 16, 2004 [FCC/OET Bulletin65 - Supplement C, July 2001]



SXP-800S

SAM(835MHz) Phantom; Flat Section; Probe: ET3DV6 - SN1702; ConvF(6.60,6.60,6.60);

835 MHz Body: $\sigma = 1.00$ mho/m $\epsilon_r = 52.9$ $\rho = 1.00$ g/cm³; Crest factor: 1.0;

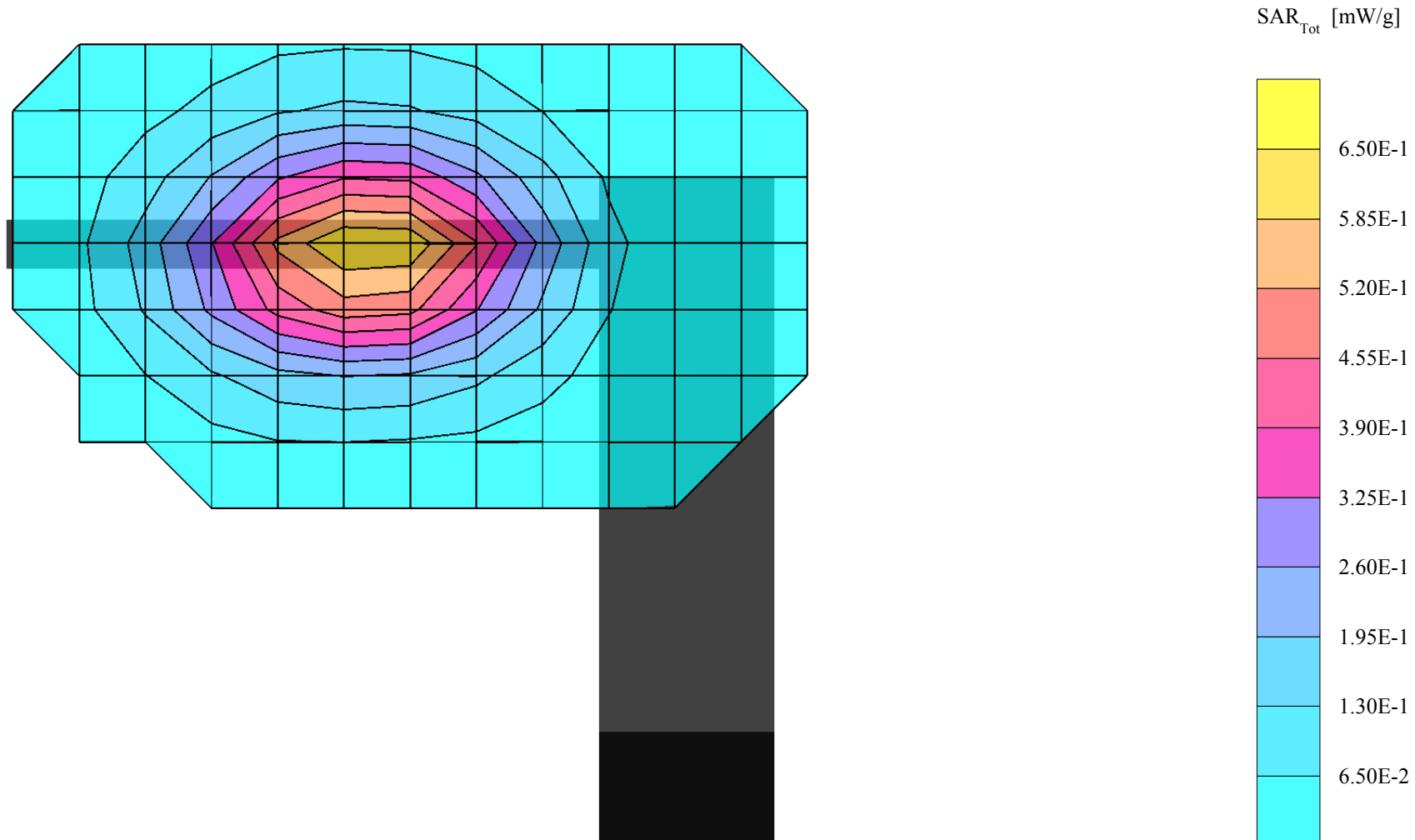
SAR (1g): 0.635 mW/g, SAR (10g): 0.437 mW/g;

FCC ID: R2NSXP-800S

CDMA Mode, Ch.0777[848.31MHz]; With Charger; Ambient Temp = 23 °C/Meas. Tissue Temp. = 21 °C

Conducted Power = 24dBm; Spacing = 2.5cm From antenna to flat phantom; Antenna Fixed

Test Date -- April 16, 2004 [FCC/OET Bulletin65 - Supplement C, July 2001]



SXP-800S

SAM(835MHz) Phantom; Section; Probe: ET3DV6 - SN1702; ConvF(6.60,6.60,6.60);
835 MHz Body: $\sigma = 1.00$ mho/m $\epsilon_r = 52.9$ $\rho = 1.00$ g/cm³; Crest factor: 1.0;
;

FCC ID: R2NSXP-800S

CDMA Mode, Ch.1013[824.70MHz]; With Charger; Ambient Temp = 23 °C/Meas. Tissue Temp. = 21 °C

Conducted Power = 24dBm; Spacing = 2.5cm From antenna to flat phantom; Antenna Fixed

Test Date -- April 16, 2004 [FCC/OET Bulletin65 - Supplement C, July 2001]

