

## Subsection

2.1033 (c)(1).

Manufacturer: TOSHIBA Corporation/  
Toshiba America Information System Inc./  
Welco China Limited

Address: 1-1, Sibaura 1-Chome, Minato-ku, Tokyo, 105-8001 Japan/  
9740 Irvine Boulevard, Irvine, California 92618-1697 U.S.A./  
Man Fung Industrial Estate, Shajing, Po On, Shenzhen, Guang Dong  
Province Peoples Republic of China

MANUFACTURING LOCATION

The equipment which is the subject of this Application will initially be manufactured by Toshiba Corporation, Hino Works, Asahigaoka 3-1-1 Hino-shi, Tokyo 191-8555, Japan. End in 2000, Toshiba Corporation plans to transfer a part of the manufacturing process for this product to the United States, at Irvine Works of Toshiba America Information Systems, Inc., 9740 Irvine Boulevard, Irvine, California 92618-1697.

When units are completed by Toshiba America Information Systems Inc. at Irvine Works, the design and initial manufacturing of the product, or least its major components, will still be done at Hino Works in Japan.

Final Assembly and Testing will be done at Irvine Works.

It has not yet been finally decided how much of the manufacturing process will be done at Irvine Works, nor has it been decided how many units will be completed at Hino Works and how many at Irvine Works. Those numbers will vary from time to time depending on market demand for the product and available plant capacity at each location.

Toshiba America Information Systems, Inc. is a wholly owned subsidiary of Toshiba Corporation.

The procedures at Irvine Works will be similar to those at Hino Works and will be designed and supervised by Hino technical personnel.

The end product will be identical in design, performance, and quality, regardless of where final assembly takes place, and will not be distinguishable by the user based on the local of final assembly.

In addition to above, end in 2000, Toshiba corporation plans to transfer the manufacturing process for this product to China, at Welco China Limited a member of Wong ' s International (Holding's) Ltd. in Hong Kong.

Man Fung Industrial Estate, Shajing, Po On, Shenzen, Guang Dong province, People's Republic of China.

Even though, the units are completed by Welco China Limited in China, the design and initial manufacture of the product has done at Hino Works in Japan as above mentioned. And when units are completed by Welco China Limited in China, most components will still be supplied from Japan as same the units are manufactured at Hino Works.

The procedures at Irvine Works and Welco China Limited will be similar to those at Hino works and will be designed and supervised by Hino technical personnel. The end product will be identical in design, performance, and quality, regardless of where final assembly takes place, and will not be distinguishable by the user based on the local of final assembly.

APPLICANT:

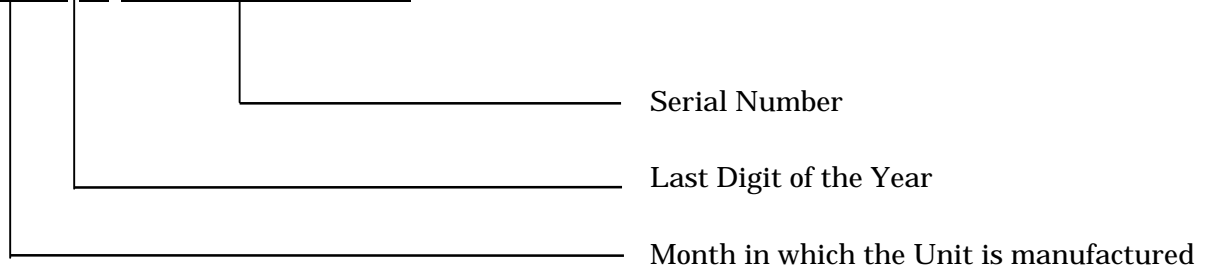
TRANSCEIVER TYPE:

TOSHIBA CORPORATION

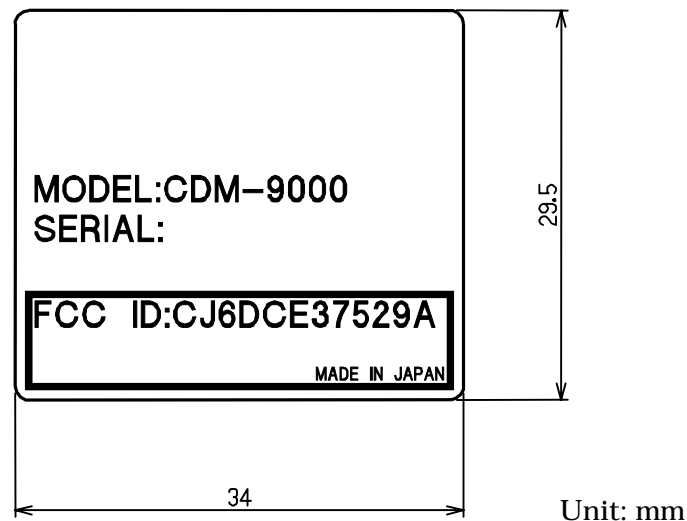
CJ6DCE37529A

The FCC Identifier will be the same regardless of the location where a unit of the product is finally assembled, at Hino Works, Irvine Works or Welco China Limited. The final assembly point of any one unit may be determined by the Serial Number. The Number Assignment Rule is as follows.

M M Y Z Z Z Z Z Z Z Z



Subsection  
2.1033 (c) (2)      FCC ID: CJ6DCE37529A



FCC ID Nameplate

A Nameplate of this type or one similar to this will be affixed to every Transceiver.  
It will be placed on the outside of the Handheld Portable Telephone as shown in the EXHIBIT No. 4.

For Units for which manufacture or final assembly is performed in the United States, the words MADE IN JAPAN may remain or may be changed to ASSEMBLED IN USA FROM JAPANESE COMPONENTS or a similar expression depending upon how much of the process is done in the United States and an analysis of the requirements of U.S. Customs Law under those circumstances. For Units for which manufacture or final assembly is performed in China, the words MADE IN JAPAN will be changed to MADE IN CHINA or ASSEMBLED IN CHINA.