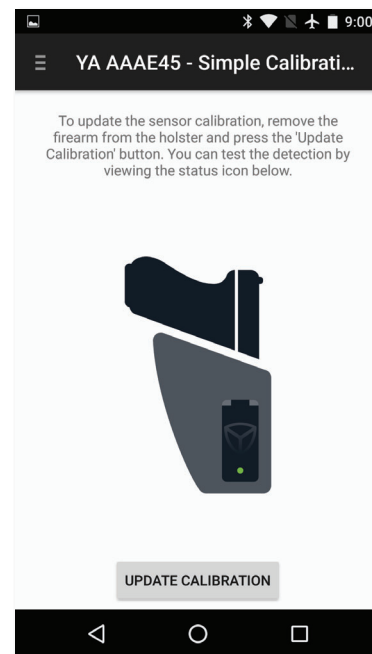
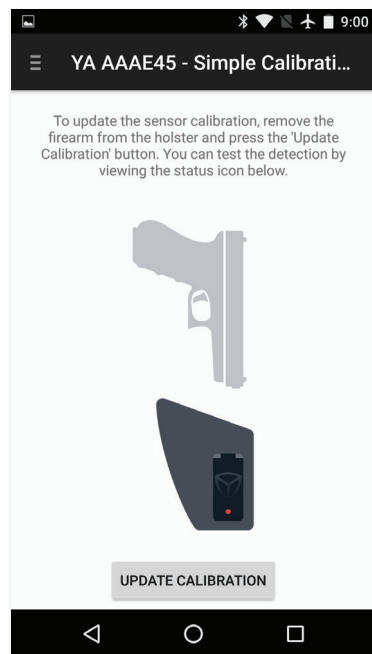


Test the Location

1. With the sensor held, temporarily, in its chosen location...
2. Remove the firearm from the holster.
3. Open the menu and select **Simple Calibration**.
4. Tap the **Update Calibration** button.
3. Insert the firearm into the holster.
4. When detected, the depiction of the firearm will move into the holster.
8. Repeat removing and inserting the firearm. Verify that the sensor and app track correctly.



Adhere the Sensor



1. Clean and then dry the selected mount location to remove any dirt or debris.
2. Shake the primer tube; continue shaking for 10 seconds once you hear ball rattle.
3. Squeeze the sides of the primer tube at mid-point between thumb and finger until you hear the internal tube break.
4. Rub the sponge tip of the primer tube on preferred location of holster, spreading the primer across the eventual footprint of the sensor. Discard the primer tube.
5. Wait 5 minutes for the primer to dry.
6. Remove the liner (white strip with red lettering) from the adhesive tape on the back of the sensor. Avoid touching the exposed tape.



7. Carefully apply sensor to the selected location.
8. Press firmly for 30 seconds to permanently adhere.
9. Allow the bond to cure for at least one hour at room temperature. After an hour, the bond will be strong enough for handling. The bond will reach maximum strength after 72 hours.

Verify Operation

1. Ensure the sensor is paired to your body-worn camera.
2. Remove the firearm from the holster.
3. Tap the **Update Calibration** button.
4. Verify that the camera responds and initiates video recording.

Taser/CEW Use with Connected Holster

When used with Taser or similar CEW weapons, the Holster Aware sensor is housed in a compatible Yardarm Connected Holster.

Connected Holsters are constructed with a pre-defined and optimal location for the sensor, eliminating the need to locate a suitable mounting location or even adhere the sensor. Only two steps are required:

Apply The Detection Tag

1. Find the package of thin, black square tags.
2. Peel the white backing off the tag.
3. Adhere to the Taser or CEW weapon as depicted for your weapon.

Taser 7 Tag Placement



Apply to bottom of Taser 7

Taser X26P Tag Placement



Apply to top of X26P

Verify Operation

1. Ensure the sensor is paired to your body-worn camera.x
(see *Yardarm Holster Setup App* section above).
2. Remove the Taser or CEW from the holster.
3. Tap the **Update Calibration** button.
4. Verify that the camera responds and initiates video recording.

© 2025 Yardarm Technologies. All rights reserved.

Yardarm Technologies, Inc. 1500 41st Ave. Capitola CA 95010 USA
www.yardarmtech.com

Trademarks

Yardarm™, the Yardarm logo, and Holster Aware™ are registered trademarks of Yardarm Technologies, Inc., hereafter just “Yardarm”. All other trademarks or registered trademarks are the property of their respective owners.

Document Lifetime

Yardarm may occasionally update online documentation, Please refer to www.yardarmtech.com/docs for the most current release.

Where to get help

Yardarm support, product, and licensing information can be obtained as follows.

Product information — For documentation, release notes, software updates, or for information about Yardarm products, licensing, and service, go to the Yardarm website at:

<http://www.yardarmtech.com/docs>

Technical support — For technical support, go to <http://www.yardarmtech.com> and select Support. On the Support page, you will see several options, including one for making a service request. Note that to open a service request, you must have a valid support agreement.

Your comments

Your suggestions will help us continue to improve the accuracy, organization, and overall quality of the user publications. Please send your opinion of this document to:

docs@yardarmtech.com

If you have issues, comments, or questions about specific information or procedures, please include the title and, if available, the part number, the revision, the page numbers, and any other details that will help us locate the subject that you are addressing.