

# Honeywell Home

## PROINDMV Indoor Motion Viewer

### Installation and Setup Guide

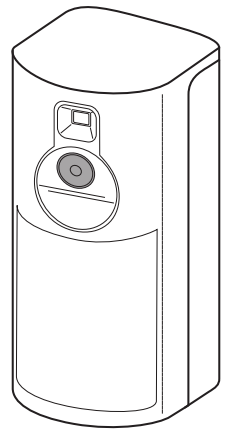
#### General Information

The PROINDMV is a battery powered, wireless indoor motion detector with a built-in video camera designed for use with Honeywell Home Security Systems. The detector is powered by 3 CR123A Lithium batteries that provide up to 4 years of battery life.

**NOTE:** Installation shall be done in accordance with the National Electrical Code, NFPA 70.

#### Features

- No wiring or remote power required. Fully portable battery powered camera allows for flexibility in selecting locations
- Provides video stream and live video viewing functionality
- Spread Spectrum, Interactive, AES Encrypted Wireless technology provides optimum signal integrity and security
- CMOS camera sensor with a wide angle 90° lens
- Night vision with one white LED
- Fresnel lens motion detection: 39.37ft (12m) 90° detection pattern
- Camera sends color video

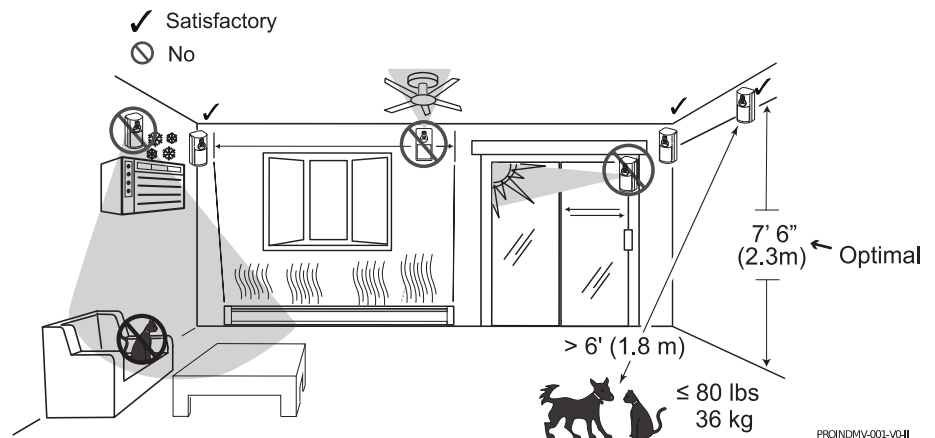


#### Installation Guidelines

Programming and RF testing should be done while the device is in its intended mounting location to ensure good communication between the control panel and the device.

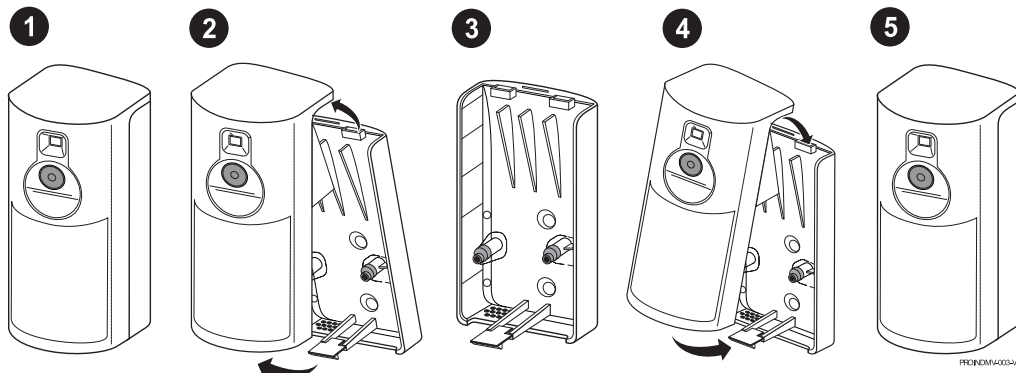
#### Mounting Considerations

- Use proper tools and hardware.
- Mount indoors in a temperature-controlled environment.
- Mount camera 7.5ft (2.3m) above the floor.
- Do not aim detector at windows, especially those that let in direct sunlight, or at heat sources such as fireplaces, radiators and heating vents.
- The detector should be installed opposed to an access point or asset you need to protect.
- Do not aim detector at moving objects such as fans.
- Do not paint or cover the detection or camera lens.



#### Mounting (Open/Close) the PROINDMV

1. Separate the rear case/wall mount from the PROINDMV by pressing the latch on the bottom of the case and rotating out.
2. Secure the rear case/wall mount in the desired location with the two provided screws (See Mounting Options section below).  
**NOTE:** MUST be mounted on a stud, solid wall, or with a robust wall anchor.
3. Slide the PROINDMV onto the rear case/wall mount bracket.



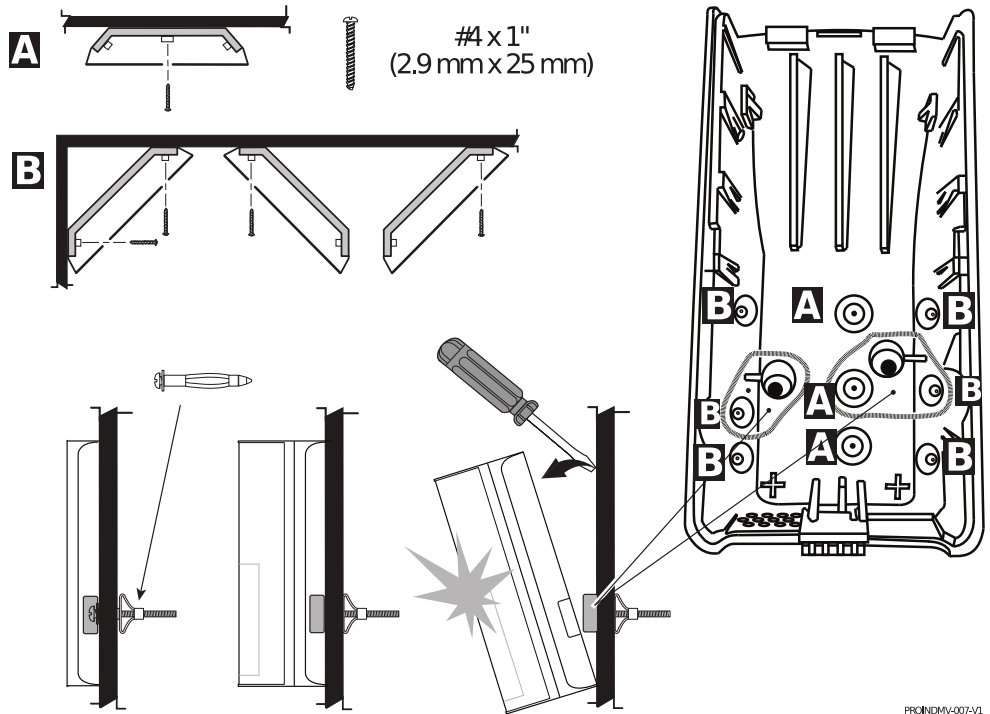
## Mounting Options

**NOTE:** Before mounting permanently, conduct a Sensor Walk Test (see the controller's instructions) to verify adequate signal strength and adjust the device location and orientation as necessary.

The PROINDMV can be mounted on the wall or in corners:

- **[A]** = Wall Mounting Holes
- **[B]** = Corner Mounting Holes
- The rear tamper plate **MUST** be mounted to a stud, solid wood, or with a robust wall anchor.

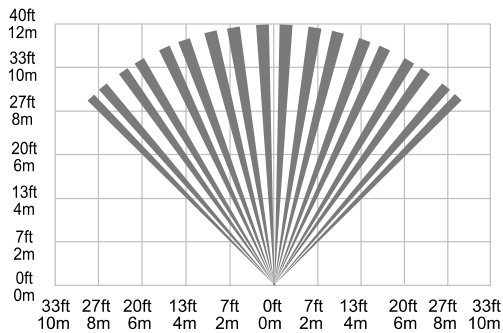
**NOTE:** Do not aim detector at windows, especially those that let in direct sunlight, or at heat sources such as fireplaces, radiators and heating vents.



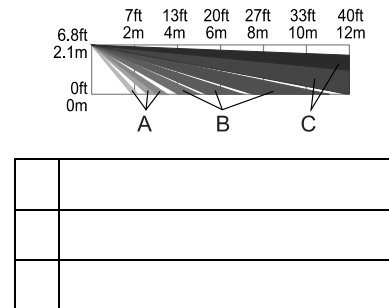
PROINDMV-007-V1

## Detection Patterns

Top View



Side View

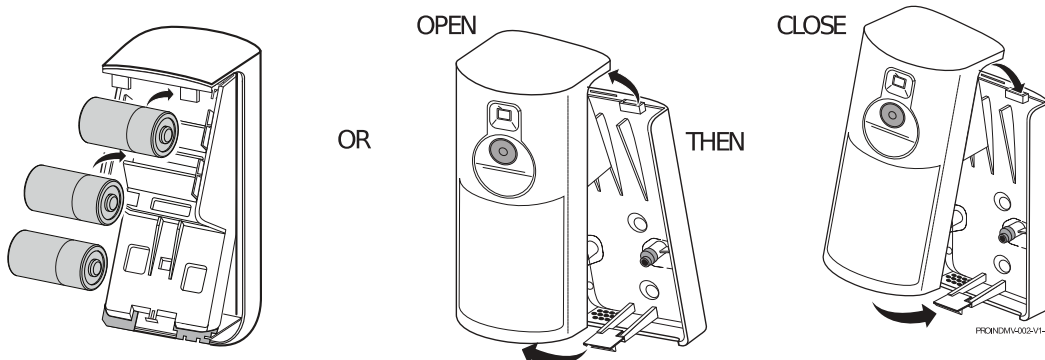


PROINDMV-004-V1-II

## Enrolling the Detector

1. Use AlarmNet 360 to program ([www.alarmnet360.com](http://www.alarmnet360.com))
2. When prompted, insert the batteries or, if powered, open and close again.
3. LED flashes rapidly at power up.

After enrolling, verify adequate signal strength by conducting a sensor test (see the controller's instructions) with the device in its intended mounting location. Adjust the device location and orientation as necessary.



## Walk Testing

After power up and enrollment, activate the Walk Test Mode with the controller. Walk Test mode is entered/exited through “Tools” menu of the control panel. Select the Test mode to make the PROINDMV enter Walk Test.

**NOTE:** The system must be disarmed. The system can only be armed after exiting the Walk Test mode.



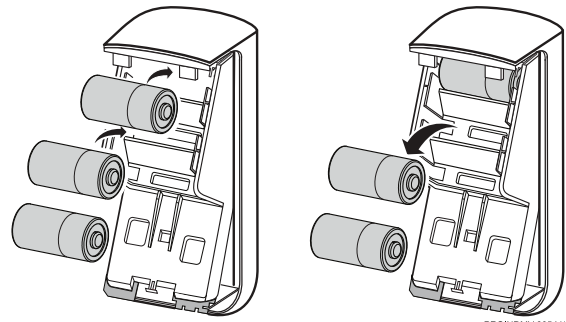
PROINDMV-006-V0

## Replacing the Batteries

Use only Resideo 300-09028, DURACELL DL123A or PANASONIC CR-123A, CR-123APA/B, CR123PE/BA batteries.

### BATTERY CAUTION:

Risk of fire, explosion and burns. Do not recharge, disassemble, heat above 212° F (100° C) or incinerate. Dispose of used batteries properly. Keep away from children.



PROINDMV-005-V1

## Specifications

### Electrical

Battery .....	Three (3) 3V Lithium batteries
Battery Part Number.....	Resideo 300-09028, DURACELL DL123A; PANASONIC CR-123A, CR-123APA/B, CR-123PA/BA
Nominal voltage .....	3 V
Low battery threshold .....	2.7 V
Estimated battery life .....	Up to 4 years
Current consumption .....	Standby (1h average) 85 µA/Max 350 mA

### Radio Properties

Wiselink® technology .....	
Radio type .....	Spread spectrum RF bidirectional
Operating frequency.....	915 MHz (USA & Canada)
Transmission security .....	AES algorithm encryption
Supervision.....	Radio, batteries
Radio antenna.....	Integrated

### Video Properties

#### Camera

Angle (HFOV).....	90°
Sensor type .....	CMOS
Spectral Resolution .....	Color
Night vision .....	Automatic White LED
Video distance.....	23ft (7m)
Video format .....	H.264
Frame rate .....	10fps
Spatial resolution.....	QVGA (320x240) / VGA (640x480)
Video File Size .....	Up to 230 kB

#### Snapshot

Encoding.....	JPEG
Spatial resolution.....	QVGA (320x240) / VGA (640x480)
File size .....	Up to 230 kB

#### Streaming

Encoding.....	H.264
Spatial resolution.....	QVGA (320x240)
Frame rate .....	10fps

### Detection Properties

#### Infrared detection specifications

Technology .....	Passive-infrared
Type.....	Dual element sensor
Lens.....	Fresnel
Detection angle .....	90°
Detection range .....	Up to 12m
Initialization time.....	90 seconds
Recovery time .....	90 - 180 seconds

## Physical properties

Dimensions..... 4.92 x 2.05 x 1.81 in (125 x 52 x 46mm)  
Weight..... 5.82 oz.(165g) – includes 3 batteries  
Material..... ABS 5VB  
Tamper..... Wall and cover tamper

## Installation / Mounting

Mounting height..... 7ft. 6in. (2.3m)  
Application..... Mounting on Wall -On Flat Wall or in Corner

## Environmental

Operating temperature..... 14° to 131°F (-10° to +55°C)  
Max relative humidity..... 93%, without condensing  
Physical Protection..... IP30 and IK04

## Standards and Approvals

915MHz FHSS – PROINDMV

### Certifications

USA FCC Part 15C (FCC47 CFR Part 15)

CANADA IC (RSS-247, Issue 1)

FCC ID: ..... CFS8DLPROINDMV  
IC: ..... 573F-PROINDMV  
HVIN: ..... PROINDMV

## FEDERAL COMMUNICATIONS COMMISSION & INDUSTRY CANADA STATEMENTS

The user shall not make any changes or modifications to the equipment unless authorized by the Installation Instructions or User's Manual. Unauthorized changes or modifications could void the user's authority to operate the equipment.

### FCC CLASS B STATEMENT

This equipment has been tested to FCC requirements and has been found acceptable for use. The FCC requires the following statement for your information:

This equipment generates and uses radio frequency energy and if not installed and used properly, that is, in strict accordance with the manufacturer's instructions, may cause interference to radio and television reception. It has been type tested and found to comply with the limits for a Class B computing device in accordance with the specifications in Part 15 of FCC Rules, which are designed to provide reasonable protection against such interference in a residential installation. However, there is no guarantee that interference will not occur in a particular installation. If this equipment does cause interference to radio or television reception, which can be determined by turning the equipment off and on, the user is encouraged to try to correct the interference by one or more of the following measures:

- If using an indoor antenna, have a quality outdoor antenna installed.
- Reorient the receiving antenna until interference is reduced or eliminated.
- Move the radio or television receiver away from the receiver/control.
- Move the antenna leads away from any wire runs to the receiver/control.
- Plug the receiver/control into a different outlet so that it and the radio or television receiver are on different branch circuits.
- Consult the dealer or an experienced radio/TV technician for help.

### INDUSTRY CANADA CLASS B STATEMENT

This Class B digital apparatus complies with Canadian ICES-003.

Cet appareil numérique de la classe B est conforme à la norme NMB-003 du Canada.

### FCC / IC STATEMENT

This device complies with Part 15 of the FCC Rules, and Industry Canada's license-exempt RSSs. Operation is subject to the following two conditions: (1) This device may not cause harmful interference (2) This device must accept any interference received, including interference that may cause undesired operation.

Cet appareil est conforme à la partie 15 des règles de la FCC et exempt de licence RSS d'Industrie Canada. Son fonctionnement est soumis aux conditions suivantes: (1) Cet appareil ne doit pas causer d'interférences nuisibles. (2) Cet appareil doit accepter toute interférence reçue y compris les interférences causant une réception indésirable.

### RF Exposure

**Warning** - The antenna(s) used for this device must be installed to provide a separation distance of at least 7.8 inches (20 cm) from all persons and must not be co-located or operating in conjunction with any other antenna or transmitter except in accordance with FCC and ISED multi-transmitter product procedures.

### Mise en Garde

**Exposition aux Fréquences Radio:** La/les antenne(s) utilisée(s) pour cet émetteur doit/doivent être installée(s) à une distance de séparation d'au moins 20 cm (7,8 pouces) de toute personne et ne pas être située(s) ni fonctionner parallèlement à tout autre transmetteur ou antenne, excepté en conformité avec les procédures de produit multi transmetteur FCC et ISEDs.

Responsible Party / Issuer of Supplier's Declaration of Conformity: Ademco Inc., a subsidiary of Resideo Technologies, Inc., 2 Corporate Center Drive., Melville, NY 11747, Ph: 516-577-2000

### SUPPORT, WARRANTY, & PATENT INFORMATION

For the latest documentation and online support information, please go to:  
<https://mywebtech.honeywellhome.com/>

For the latest warranty information, please go to:  
<https://www.security.honeywellhome.com/hsc/resources/wa/index.html>

For patent information, see <https://www.resideo.com/patent>



MyWebTech



Warranty



Patents



The product should not be disposed of with other household waste. Check for the nearest authorized collection centers or authorized recyclers. The correct disposal of end-of-life equipment will help prevent potential negative consequences for the environment and human health.

Device physical protection - device shall be installed in area that is not publicly accessible

Installation physical protection - system shall be installed in area not publicly accessible, this includes wiring protection as well

Any attempt to reverse-engineer this device by decoding proprietary protocols, de-compiling firmware, or any similar actions is strictly prohibited.

This product manufactured by Resideo and its affiliates.  
The Honeywell Home Trademark is used under license from Honeywell International Inc.

# resideo



800-25313A 8/19 Rev A

2 Corporate Center Drive, Suite 100  
P.O. Box 9040, Melville, NY 11747  
© 2019 Resideo Technologies, Inc.  
[www.resideo.com](http://www.resideo.com)