



***User Manual***

## **Federal Communications Commission (FCC) Requirements, Part 15**

**This equipment has been tested and found to comply with the limits for a class B digital device, pursuant to part 15 of the FCC Rules. These limits are designed to provide reasonable protection against harmful interference in a residential installation.**

**This equipment generates, uses and can radiate radio frequency energy and, if not installed and used in accordance with the instructions, may cause harmful interference to radio communications. However, there is no guarantee that interference will not occur in a particular installation. If this equipment does cause harmful interference to radio or television reception, which can be determined by turning the equipment off and on, the user is encouraged to try to correct the interference by one or more of the following measures:**

- Reorient or relocate the receiving antenna.**
- Increase the separation between the equipment and receiver.**
- Connect the equipment into an outlet on a circuit different from that to which the receiver is connected.**
- Consult the dealer or an experienced radio/TV technician for help.**

<b>CAUTION: Any changes or modifications not expressly approved by the grantee of this device could void the users authority to operate the equipment.</b>
--

## Quick Installation Guide for RF Wireless Optical Mini Mouse

THIS UNIT COMPLIES WITH PART 15 FCC RULES.

OPERATION IS SUBJECT TO FOLLOWING TWO CONDITIONS:

(1) THIS DEVICE MAY NOT CAUSE HARMFUL INTERFERENCE.

(2) THIS DEVICE MUST ACCEPT ANY INTERFERENCE RECEIVED, INCLUDING INTERFERENCE THAT MAY CAUSE UNDESIRABLE OPERATION.

### 1. Contents of the Package

Please check the contents of the package. It should contain the following:

- RF Wireless Optical Mini Mouse
- USB (or PS/2 or UP combo) Receiver
- AC to DC Adaptor
- DC to DC Cable
- USB to DC Cable
- One Ni-MH Rechargeable Pack Battery
- Mouse Driver (Disk or CD-ROM)
- Quick Installation Guide for RF Wireless Optical Mini Mouse

Please contact your dealer if anything is missing or damaged.

### 2. Hardware Installation (See illustration ①)

#### 2-1. Installing a Mouse with Mouse Port (PS/2) Connector

If you have a mouse receiver with a round mouse port connector, you must turn off the computer before connecting or disconnecting your mouse.

#### 2-2. Installing a USB Mouse

When you use a mouse with a USB connector, you don't have to shut off the computer. Just plug the USB connector into the USB port.

#### 2-3. Installing a Combo (USB→PS/2) Mouse

The Combo Mouse comes with a USB connector, together with a USB→PS/2 port adapter.

Before plug your mouse into the computer, try to make sure what kind of mouse port you have. If you have a USB port, plug in the original USB connector; if you have a PS/2 port, please connect the adapter first to the cable, then plug into the PS/2 port.

#### 2-4. Select a Suitable Channel (See illustration ②)

First, check how many channels of the mouse on the package or the channel switch. Open the mouse battery cover, then set channel switch to "1" or "2". There will be some interfere when your nearby classmates or colleagues and you are using the same channel. Change to the other channel immediately when it happened. If your mouse is only one-channel type, just skip this section.

#### 2-5. Linkage (See illustration ③)

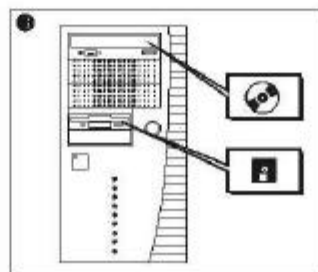
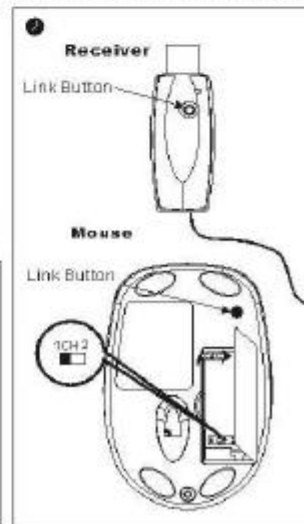
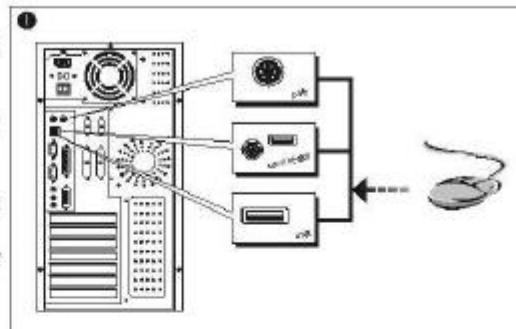
Press ID Link Button (which is in the Receiver), the green LED light should blink slowly at this time. Press ID Link Button of Mouse, the green LED light blinking should become quickly. If the Link is complete, the green LED will stay in light, but blinks when the mouse is moving.

### 3. Software Installation

(See illustration ④)

- Insert the disk or CD-ROM to install the driver. Please find and double click the **setup**. Mouse software supports DOS, Windows 3.1, Windows 95, Windows 98, Windows NT 3.51, Windows NT 4.0, Windows 2000 and Windows ME.

- Before installing any software



under Windows NT 4.0, we strongly recommend you create an Emergency Repair Disk using the Repair Disk utility provided by the system (RDISK.EXE).

- Please note that USB mice are only supported under Windows 98, Windows 2000 and Windows ME.

#### 4. Operation

After using the disk or CD-ROM to install the driver, there will an icon in the start bar. While double click the icon, a Mouse Control Panel window shows up. You can choose any function you like for programmable buttons. A Mouse Control Panel will show up in the start bar. Please double the icon.

##### A. Wheel: (See illustration ④)

###### a. Wheel Mode:

Choose system default mode (Intel - Mouse) or enhance scroll mode

###### b. Wheel Speed:

Choose the speed of scrolling

##### B. Programmable Buttons: (See illustration ⑤)

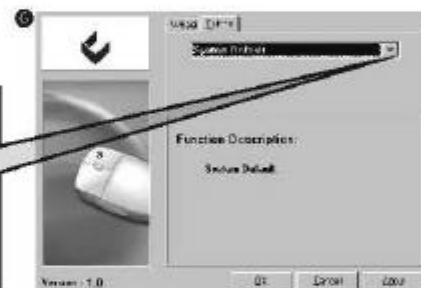
Choose which function you like to be.

#### 5. Charging

Recommend to charge the mouse over 8 hours at least for first time using. The following are 3 charging modes

##### 1. Power from Receiver (See illustration ⑥-1)

System Default	Up	Find File	Close	Wheel
F1~F10	Down	System Help	Application	Launch Default
Esc	Left	Middle Button	Double Click	Browser Launch
Backspace	Right	Minimize All	Minimize	Default E-mail
Enter	Undo	Windows	Window	I.E. Backward
Space	Redo	Run...	Maximize	Universal Scroll
Delete	Cut	Start Menu	Window	Auto Scroll
Page Up/Down	Copy	System Property	Drag Lock	Universal Zoom
Tab	Paste	Undo Minimize	Shift Lock	Connect to Internet
Home	Explorer	All Windows	Control Lock	
End	Find Computer	Control Panel	Horizontal	



Connect the receiver to the mouse with the DC to DC cable and then plug the receiver to PC.

##### 2. Power from PC

(See illustration ⑥-2)

Connect the USB (or PS/2) port of PC to the mouse with the USB (or PS/2) to DC cable.

##### 3. Power from Adaptor

(See illustration ⑥-3)

Connect the mouse with the AC to DC adaptor.

#### Notice:

1. The scrolling wheel is the low-battery indicator.
2. Please charge the mouse immediately while the indicator turns to red.
3. While the mouse is in sleeping mode, please press any button or move the scrolling wheel to wake up the mouse.
4. While charging the mouse, you can keep to work.
5. After charging 4 ~ 6 hours, you can use the mouse for 5 days.

