

Instructions

Where to get the app:

Please search "scent marketing" in Google play or App store and you will find it.



Device Add device

AAA >

AAA >

Device Setting Save

Setting About

Name: AAA → Amend device name

Label: AAAAAA → Remarks: location

07:00-21:00 Grade: 09

Mon Tue Wed Thur Fri Sat Sun

Delete working period

Add working period

Time switch

AAA

password

Login

(PS: There are 5 working periods available to be set.)

After adjusting grade, please save it BEFORE going back to the home page.

Amend password

Device control

Set About

PCB Version: AAAA

Equipment version: AAAA

APP version: AAAA

Change password

Change password

The new password

Confirm password

Change password

If you forget the password, please press the reset button to restore the factory settings. The factory settings password is 8888.

Working period setting Save

Start working time Stop working time

04 05 06 07 08 01 02 03

06 : 00 00 : 01

Slide up and down to adjust

Repeat Mon Tue Wed Thur Fri Sat Sun

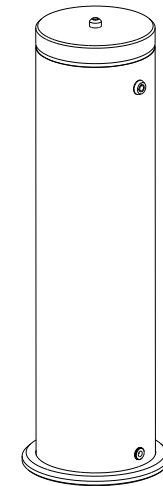
Select the day

Concentration grade 6

Select grade

PRODUCT MANUAL

Aroma diffuser A301C



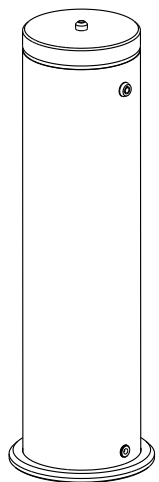
Concentration and Consumption

	consume(ml/h)	Working & Stop time	
Grade	A301-1000ML	Working(s)	Stop(s)
G1	0.3	15s	300s
G2	0.4	15s	150s
G3	0.5	20s	120s
G4	0.6	20s	85s
G5	0.7	25s	80s
G6	0.8	30s	75s
G7	0.9	30s	60s
G8	1.0	30s	50s
G9	1.1	30s	40s
G10	1.2	30s	33s
G11	1.28	33s	30s
G12	1.36	40s	30s
G13	1.44	50s	30s
G14	1.52	60s	30s
G15	1.60	75s	30s
G16	1.68	80s	25s
G17	1.76	85s	20s
G18	1.84	120s	20s
G19	1.92	150s	15s
G20	2.00	300s	15s

Note: 1. Above date is base on testing oil in laboratory.

2. Above data is for reference only. The consumption of different oil may be different.

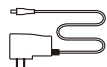
Specification



【 Product 】	: A301C-V1.0
【 Size 】	: 148*148*473mm
【 Volume 】	: 1000ml
【 Weight 】	: 3.1kg
【 Coverage 】	: 400m ² / 1200m ³
【 Power 】	: 5W
【 Voltage 】	: DC12V



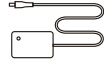
Oil bottle



Adaptor



Manual

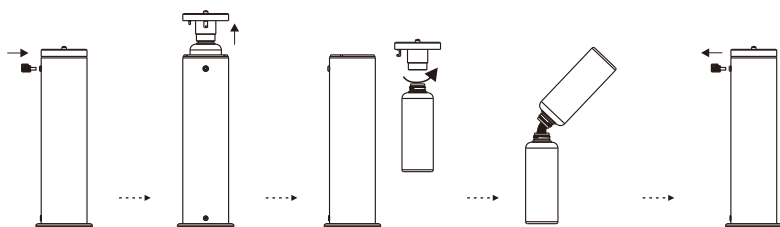
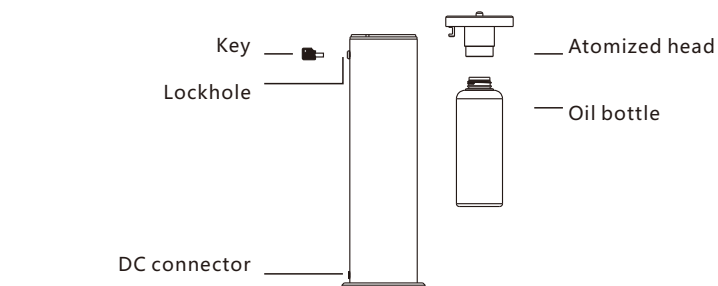


Bluetooth module

PTFE tape:1. Tie up/ twine the atomized core when change a new one to machine.
2. Twine connector screwing to machine.

Installation

Application : Hotel, conference hall, lobby, bar, SPA, etc.

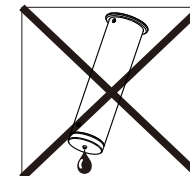
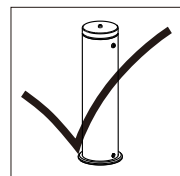


- 1.Unlock the machine
- 2.Take out the Atomized head with bottle.
- 3.Unscrew the oil bottle.
- 4.Adding the oil.
- 5.Install the bottle with atomized head, and lock the machine.

Warning

1.Please keep the machine vertical. Tilt or lie flatly may cause oil over flow. The machine efficiency may be affected.

2.Shall not modify, disassemble or repair the machine if you are not a technician. If any failure happens to the machine, please contact our technical personnel.



Equipment cleaning

The machine needs to be cleaned when below situation happen:

- 1.You're about to change to another kind of essential oil.
- 2.The atomized head volume becomes weak.

Cleaning steps

- 1.Pull out the atomized head, loose the bottle.
- 2.Fill moderate alcohol into the bottle and install, then turn on the machine and work for 5 minutes.
- 3.Airing the atomized head and the bottle.

Troubleshooting

Before asking to have the machine repaired, please try to diagnose the problem first following to bellow instructions.

Breakdown	Solution
Does not diffuse	-Check whether the mode you choose is correct or not. -Check if the machine is during "Non-Working period" -Air pump may be damaged, change a new one. -Check whether the tube is loose or not
Low diffuse	-The atomizing core is blocked, clean by alcohol or change a new component. -Check whether the gasket is damage/loose or not. -Check whether the tube is loose or not
Oil spill	-Check whether the bottle is loose or not -The gasket in the atomized head is damaged or loose.
Oil sprinkle	-The atomized head is damaged, change a new one -The machine is tilted or lie down, keep the machine vertical.
Abnormal noise	-The air pump is loose, retighten the pump -The air pump is damaged, change a new one.

FCC Warning Statement

Changes or modifications not expressly approved by the party responsible for compliance could void the user's authority to operate the equipment. This equipment has been tested and found to comply with the limits for a Class B digital device, pursuant to Part 15 of the FCC Rules. These limits are designed to provide reasonable protection against harmful interference in a residential installation. This equipment generates uses and can radiate radio frequency energy and, if not installed and used in accordance with the instructions, may cause harmful interference to radio communications. However, there is no guarantee that interference will not occur in a particular installation. If this equipment does cause harmful interference to radio or television reception, which can be determined by turning the equipment off and on, the user is encouraged to try to correct the interference by one or more of the following measures:

- - Reorient or relocate the receiving antenna.
- - Increase the separation between the equipment and receiver.
- - Connect the equipment into an outlet on a circuit different from that to which the receiver is connected.
- - Consult the dealer or an experienced radio/TV technician for help.

This device complies with part 15 of the FCC Rules. Operation is subject to the following two conditions: (1) This device may not cause harmful interference, and
(2) this device must accept any interference received, including interference that may cause undesired operation.