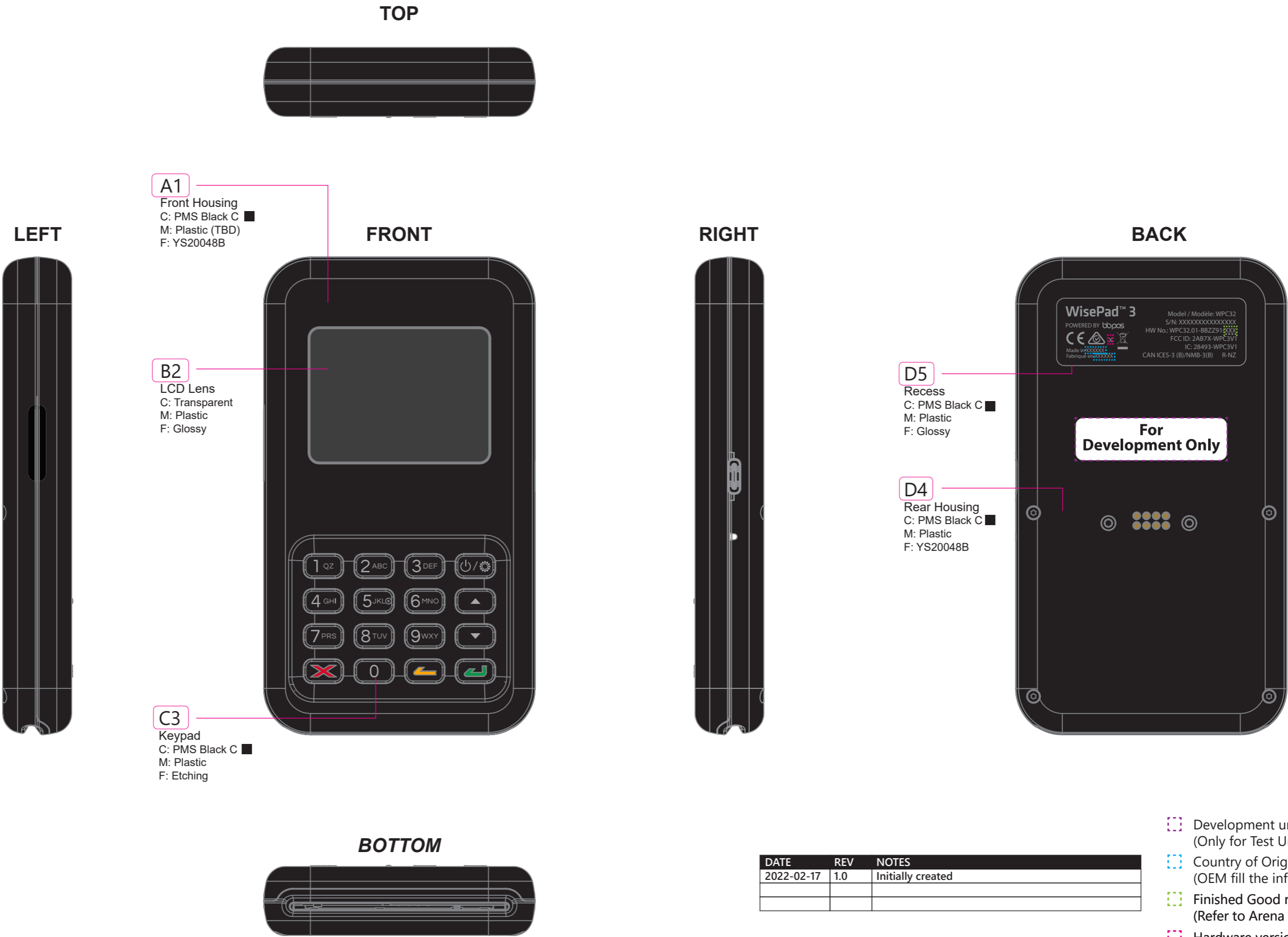




WisePad 3 (WPC32) - CMF

Accessories	Specification
USB-A to USB-C cable x 1	Black, 1200mm



- A** Front Housing
- B** LCD Lens
- C** Keypad
- D** Rear Housing

DATE	REV	NOTES
2022-02-17	1.0	Initially created

- Development unit label area (Only for Test Unit)
- Country of Origin (OEM fill the information)
- Finished Good revision number (Refer to Arena revision code)
- Hardware version number (Refer to SKU1 rev. version)

WisePad 3 (WPC32) - Label & Printing



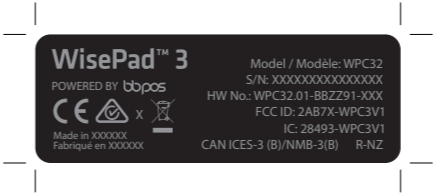
FRONT



- 46.2 mm x 30.2 mm
Silkscreen Printing
- Pantone Cool Gray 6 C
 - Pantone 186 C
 - Pantone 347 C
 - Pantone 116 C



BACK

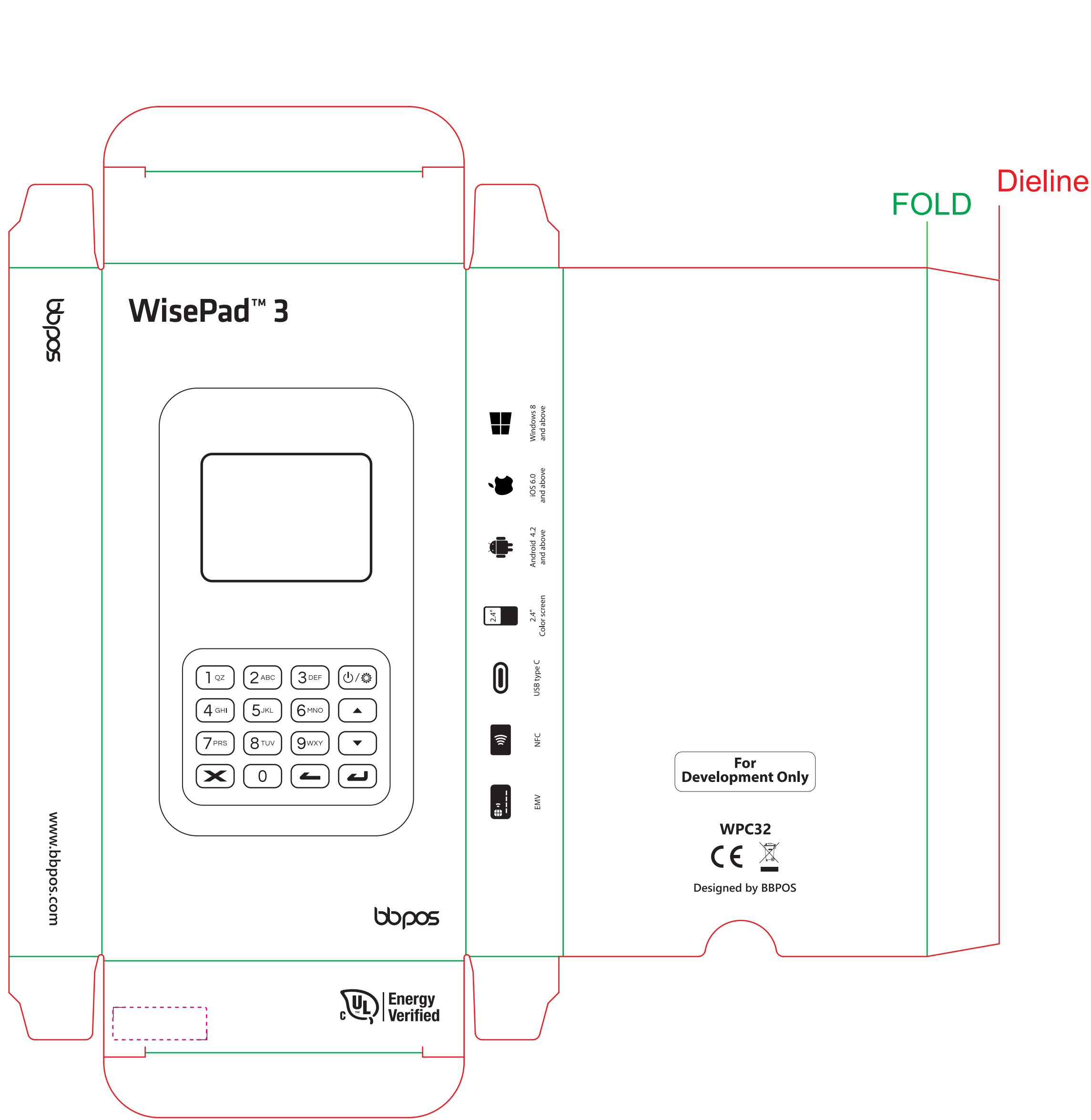


- 48.3 mm x 17 mm, R=2mm
Black PP sticker
Matt coating
word printed in 50% black



- 39 mm x 11 mm, R=2mm
White PP sticker
Matt lamination
word printed in black

GREEN LINE INDICATES FOLD LINE. DO NOT PRINT!!!!
RED LINE INDICATES DIE LINE. DO NOT PRINT!!!!

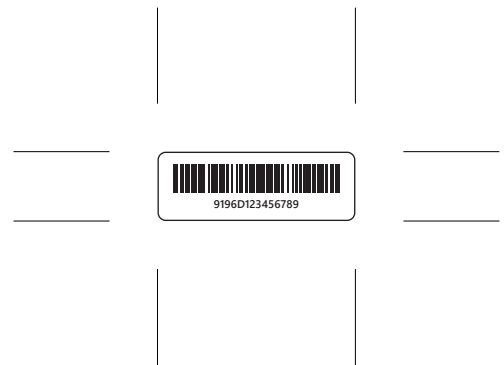


Dieline

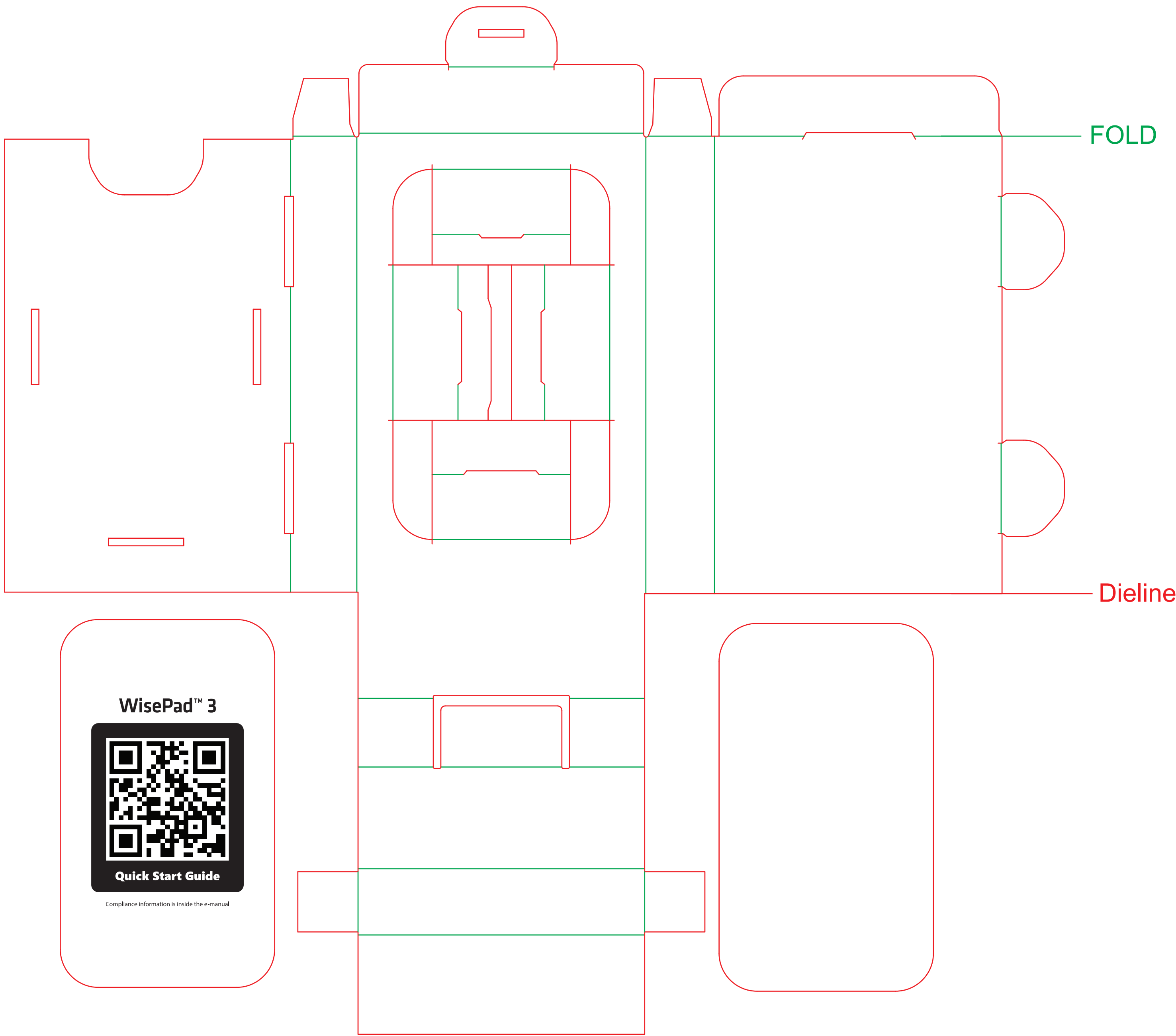
FOLD

For Development Only

39 mm x 11 mm, R=2mm
White PP sticker
Matt lamination
word printed in black



26mm x 9mm, R=1mm
SN Label
White PP label
Content printed in Black



FOLD

Dieline

DO NOT PRINT Magenta Line!!!
S/N label area,
26mm x 9 mm; R=1mm

Gift Box
Material: F-Flute Card board
Color: Brown paper color
Single color printing (CMYK Black)

Inner Tray
Material: F-Flute Card board
Color: Brown paper color
Single color printing (CMYK Black)