

Regulatory WLAN Antenna Information (Example)

(English Language Required for Intel Regulatory Review / Approval)

(OEM/ODM or antenna vendor is required to complete this document with platform antenna information.
Remove Intel references and make this your own document)

Brand Name	
Model Name	H70
Antenna Vendor	High-tek
Antenna Part Number	<input type="checkbox"/> Main Antenna:
	<input type="checkbox"/> Aux Antenna:
With WLAN Module	<input type="checkbox"/> WM3B2100
(Check Box)	<input type="checkbox"/> WM3B2200BG
	<input type="checkbox"/> WM3B2915ABG
	<input type="checkbox"/> WM3945ABG

Antenna Sample / Antenna Data Requirements for worldwide regulatory approval

Section	Description of Required OEM / ODM Antenna Information	US / IC	EU	Japan	Taiwan	S.Korea
1A	Part Number for Antenna only	Required	Required	Required	Required	Required
1B	Antenna Manufacturer Name	Required	Required	Required	Required	Required
1C	Description of Antenna Type	Required	N/A	N/A	N/A	N/A
1D	Part number of Antenna Assembly / cable impedance, length & diameter.	Required	Desired	Desired	Desired	Desired
1E	Main & Aux antenna (Peak Gain W/ cable loss)	Required	Required	Required	Required	Required
	1E OR 1F, 1G, 1H					
1F	Main & Aux antenna (Peak Gain only)	Required	Required	Required	Required	Required
1G	VSWR of cable including connector	Required	Required	Required	Required	Required
1H	Main & Aux antenna (Cable loss W/ connector)	Required	Required	Required	Required	Required
2	Dimensioned Photographs and Drawings of main & auxiliary antennas	Required	Required	Required	Required	Required
3	Radiation patterns of antennas loaded in the host platform.	Required	Desired	Required	N/A	Required
4	Platform model name / number - correlated to antenna manufacturer and antenna part number	Required	Required	Desired	Required	Desired
5	Photograph(s) or Drawings showing location of antennas in platform. (S. Korea requires photographs of antennas for approval submission). Taiwan requires pictures of each antenna type shown in the system.	Required	Required	Desired	Required (Photos)	Required (Photos)
6	Mech. drawings / photos with dimensions of antenna locations and distance from end-user (For evaluation of SAR testing requirement).	Required	N/A	N/A	N/A	N/A
7	Photograph(s) or Drawings showing the location of all antennas (WLAN, other) and distance between those transmitting antennas. Information will be used to evaluate whether co-location testing is required.	Required	N/A	N/A	N/A	N/A
8	Local representative contact information for LMA/ PARS process.	Required	N/A	N/A	N/A	N/A

Antenna Information

Section 1. Antenna Assembly Specifications

Antenna Assembly Summary:

1A Antenna Part Number	1B Manufactu re	1C Antenna Type	1D Cable Assembly Part Number and Information	1E Peak Gain W/ Cable loss (dBi)	1F Peak Gain w/o Cable Loss (dBi)	1G VSWR	1H Cable Loss (dBi)
Main Antenna	HIGH-TEK	PIFA	(P/N: Sumitomo 0.7DS-PBE COAXIAL CABLE)	2400-2500MHz 0.42 dBi (peak)	2400-2500MHz 0.72 dBi (peak)	2400-2500MHz 1.45 max	2400-2500MHz 0.30 dBi (peak)
			(P/N: Hitachi UL1745-SB CX-50)	5150-5350MHz dBi (peak)	5150-5350MHz dBi (peak)	5150-5350MHz max	5150-5350MHz dBi (peak)
			50 ohm Coaxial. length: 105 mm diameter: 1.13mm	5470-5725MHz dBi (peak)	5470-5725MHz dBi (peak)	5470-5725MHz max	5470-5725MHz dBi (peak)
			Connector: I-PEX 20278-111R-13	5725-5850MHz dBi (peak)	5725-5850MHz dBi (peak)	5725-5850MHz max	5725-5850MHz dBi (peak)

Antenna Peak Gain Table:

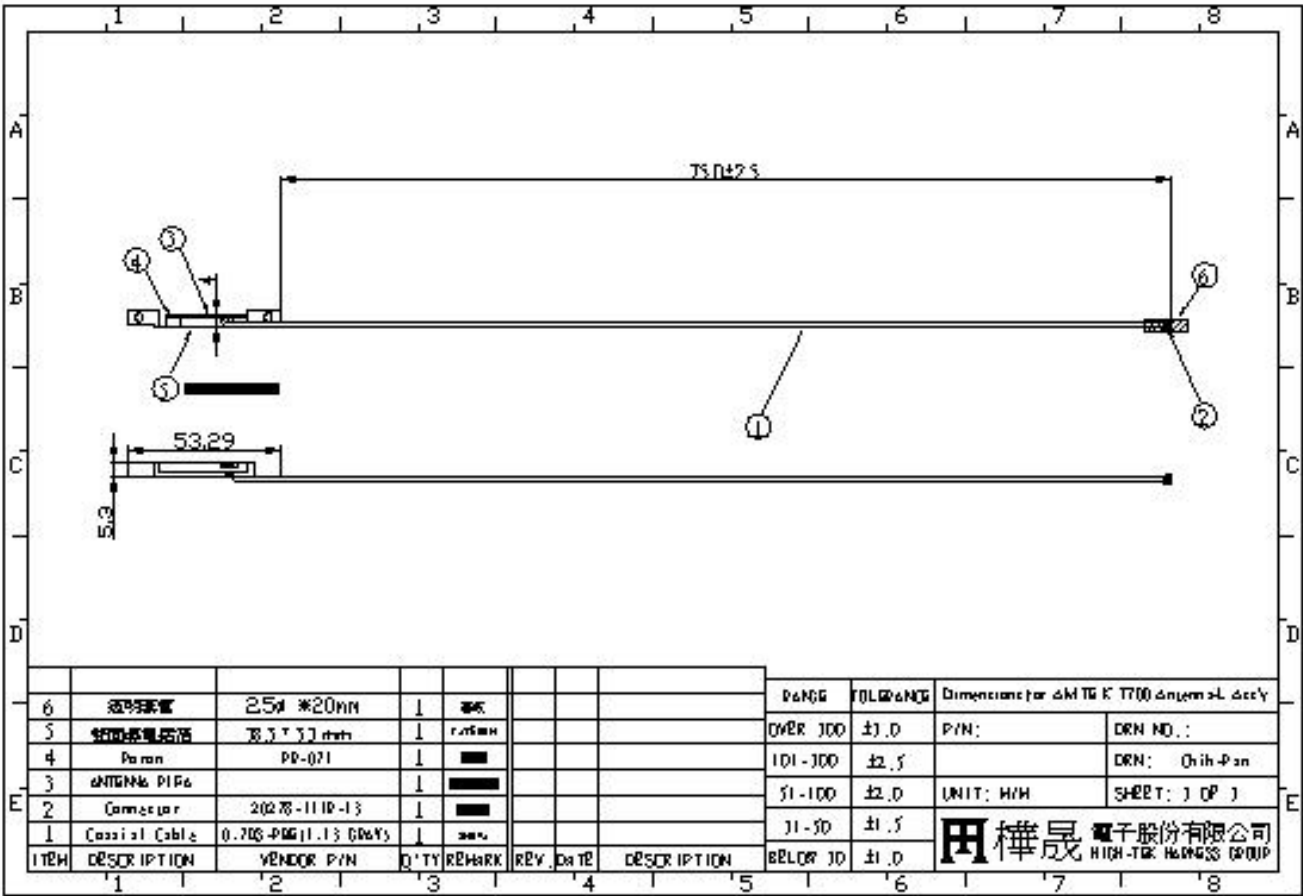
	Main antenna		
Frequency (MHz)	Horizontal (dBi)	Vertical (dBi)	Hori+Ver (dBi)
2400	0.63	-0.65	0.83
2450	0.87	-0.40	1.08
2500	0.24	-0.96	0.42
5150			
5250			
5350			
5470			
5600			
5725			
5785			
5850			

- Antenna Peak Gain required being test in system basis.
- 1E frame contend absolutely peak antenna gain include H/ V/ H+V.

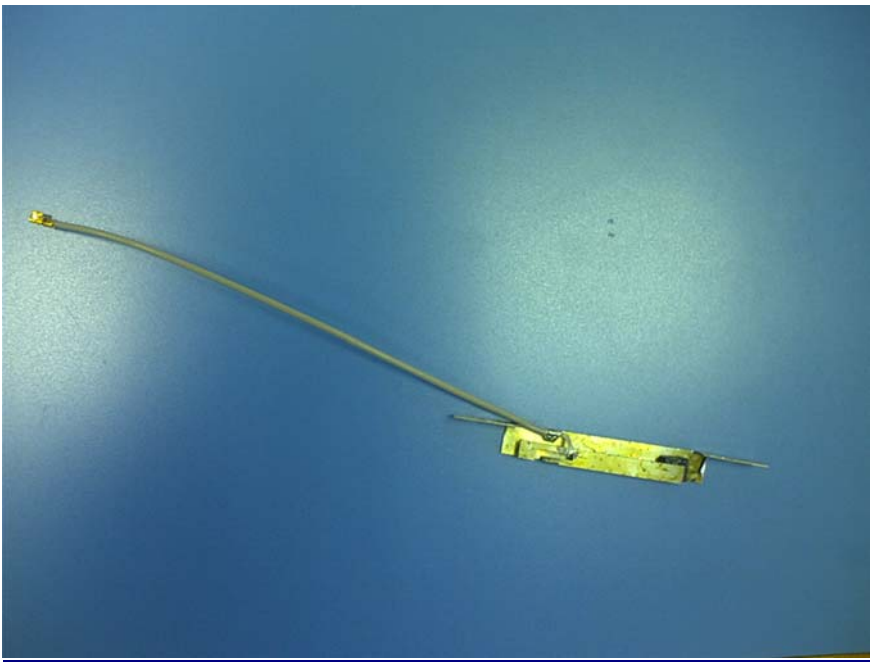
Section 2. Dimensioned Photos or Drawings of Antennas

Include a dimensioned photo and dimensioned drawing of main antenna here.

Main Antenna Dimensioned Drawing:



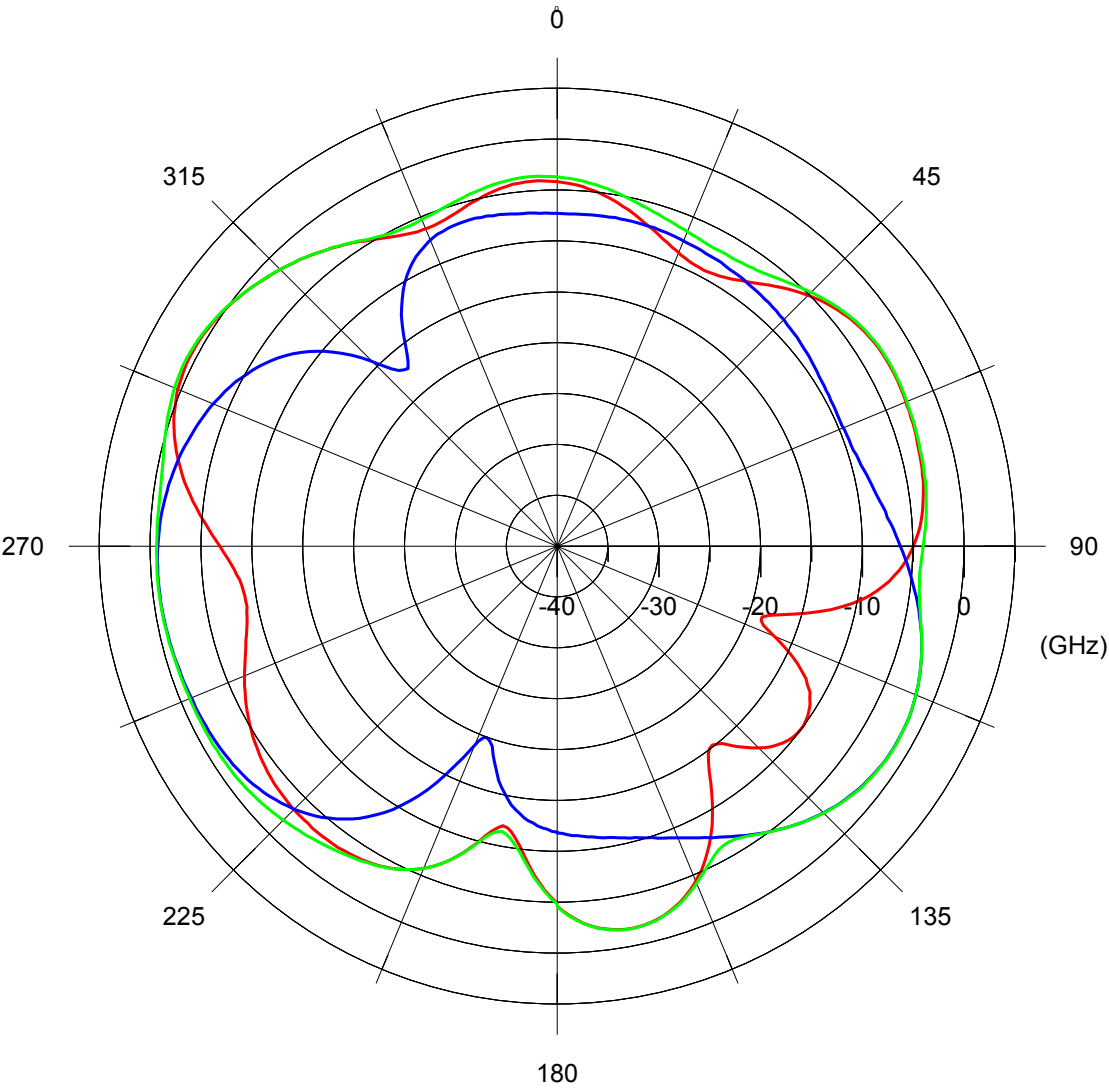
Main Antenna Photo:



Section 3. Radiation characteristics of antennae Loaded in Host Platform

2400-2500MHz radiation characteristic

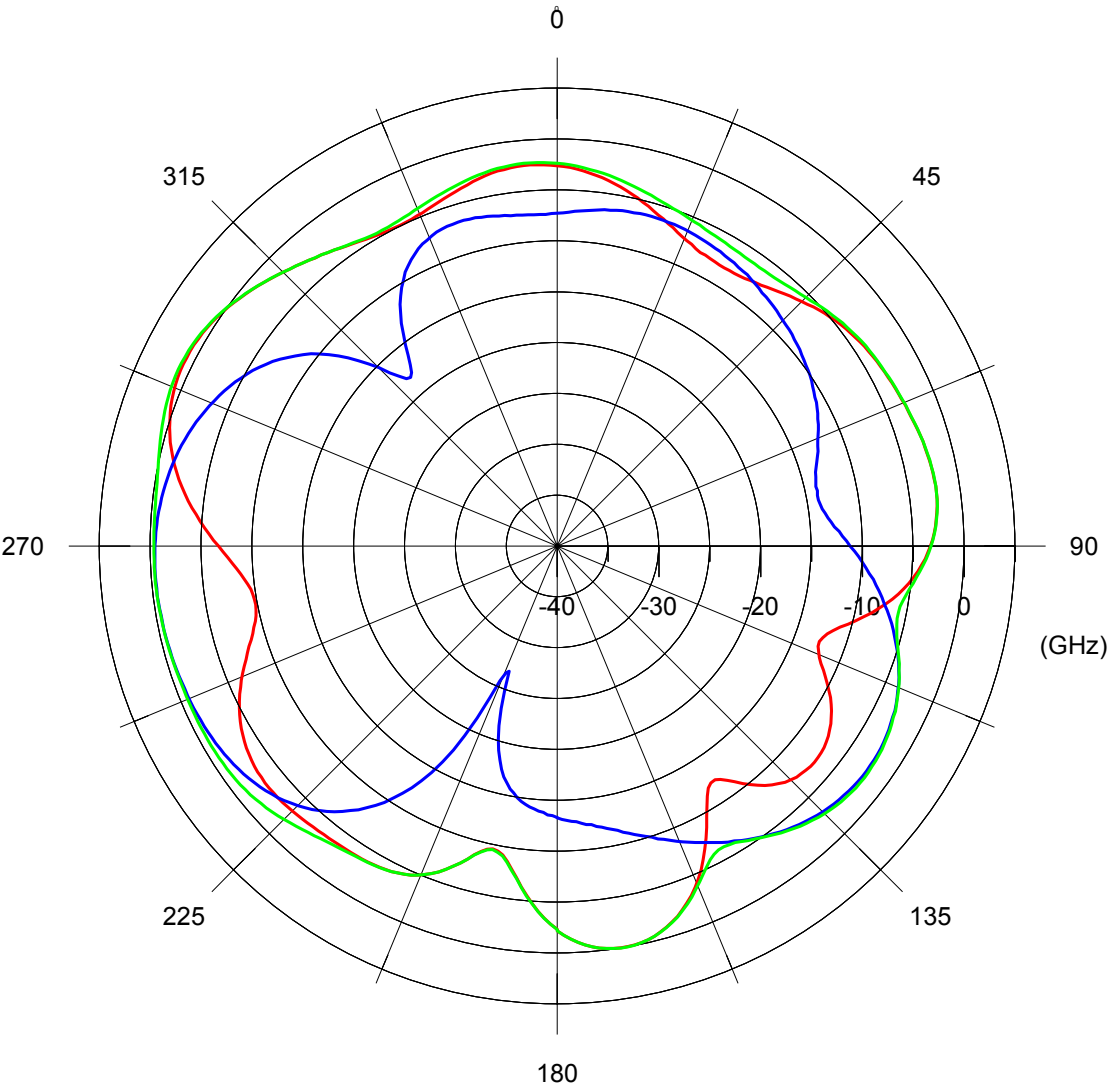
Main antenna(L): 2400 MHz



Note: The red line represents the radiation pattern of horizontal polarization, the blue one represents the radiation pattern of vertical polarization and the green one represents the radiation pattern of average gain (H+V).

Center Frequency	2400 MHz
Horizontal (dBi) peak	0.63
Vertical (dBi) peak	-0.65
Horz+Vert (dBi) peak	0.83

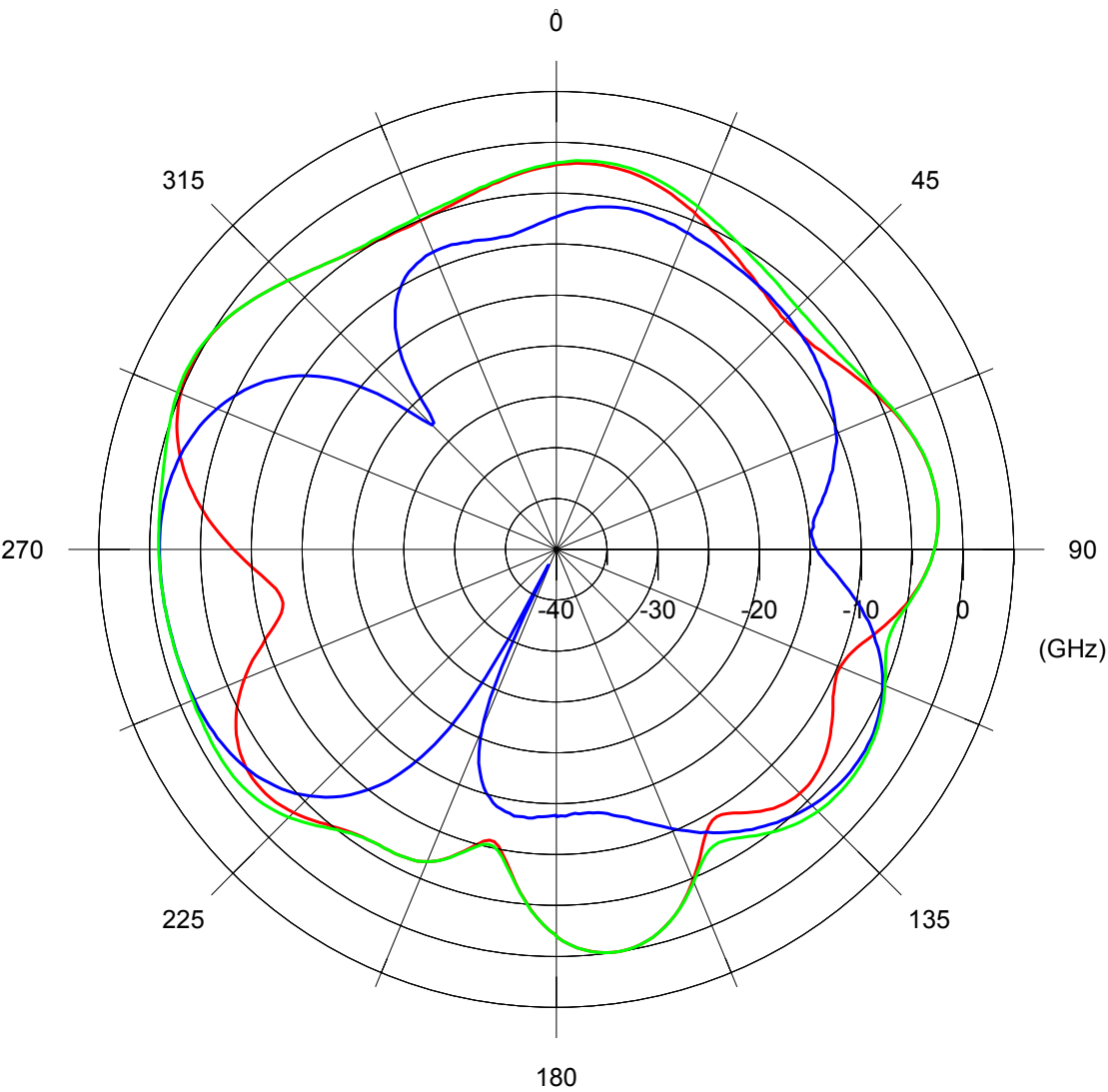
Main antenna(L): 2450 MHz



Note: The red line represents the radiation pattern of horizontal polarization, the blue one represents the radiation pattern of vertical polarization and the green one represents the radiation pattern of average gain (H+V).

Center Frequency	2450 MHz
Horizontal (dBi) peak	0.87
Vertical (dBi) peak	-0.40
Horz+Vert (dBi) peak	1.08

Main antenna(L): 2500 MHz



Note: The red line represents the radiation pattern of horizontal polarization, the blue one represents the radiation pattern of vertical polarization and the green one represents the radiation pattern of average gain (H+V).

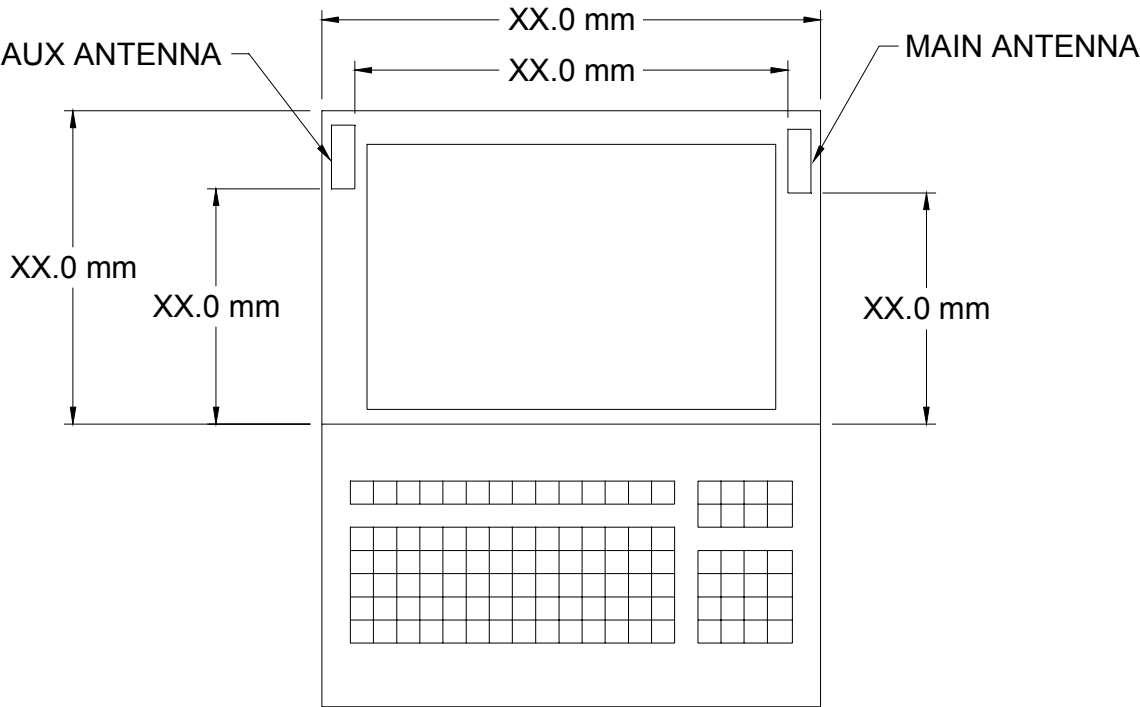
Center Frequency	2500 MHz
Horizontal (dBi) peak	0.24
Vertical (dBi) peak	-0.96
Horz+Vert (dBi) peak	0.42

Section 4. Host Platform Information

OEM / ODM Host platform: (XXXXXXX) platform correlated to antenna data
Rating Label Photo:

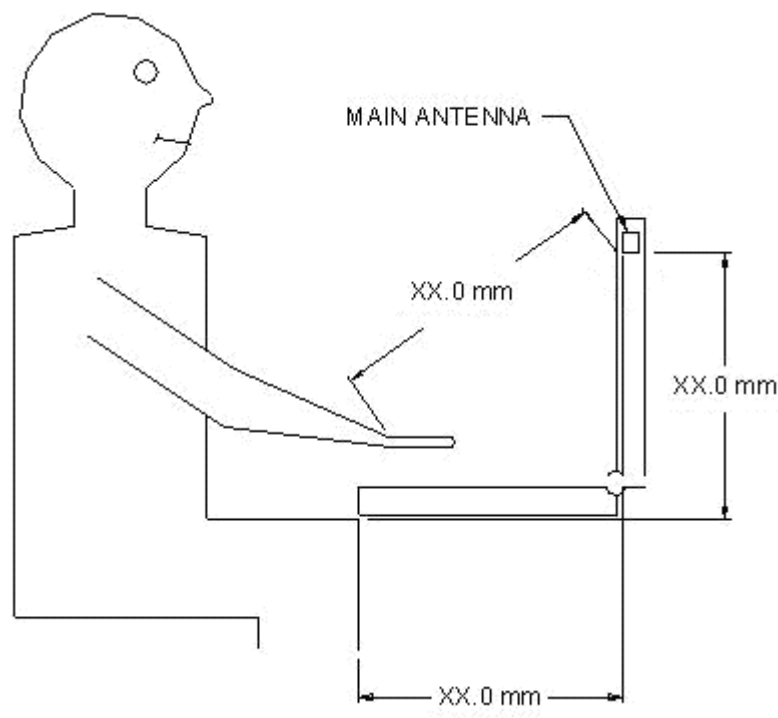
Section 5. Antenna Host Platform Location Information

Include a dimensioned photo or dimensioned drawing of main and auxiliary antenna placements.



Section 6. Antenna dimensional information for SAR evaluation

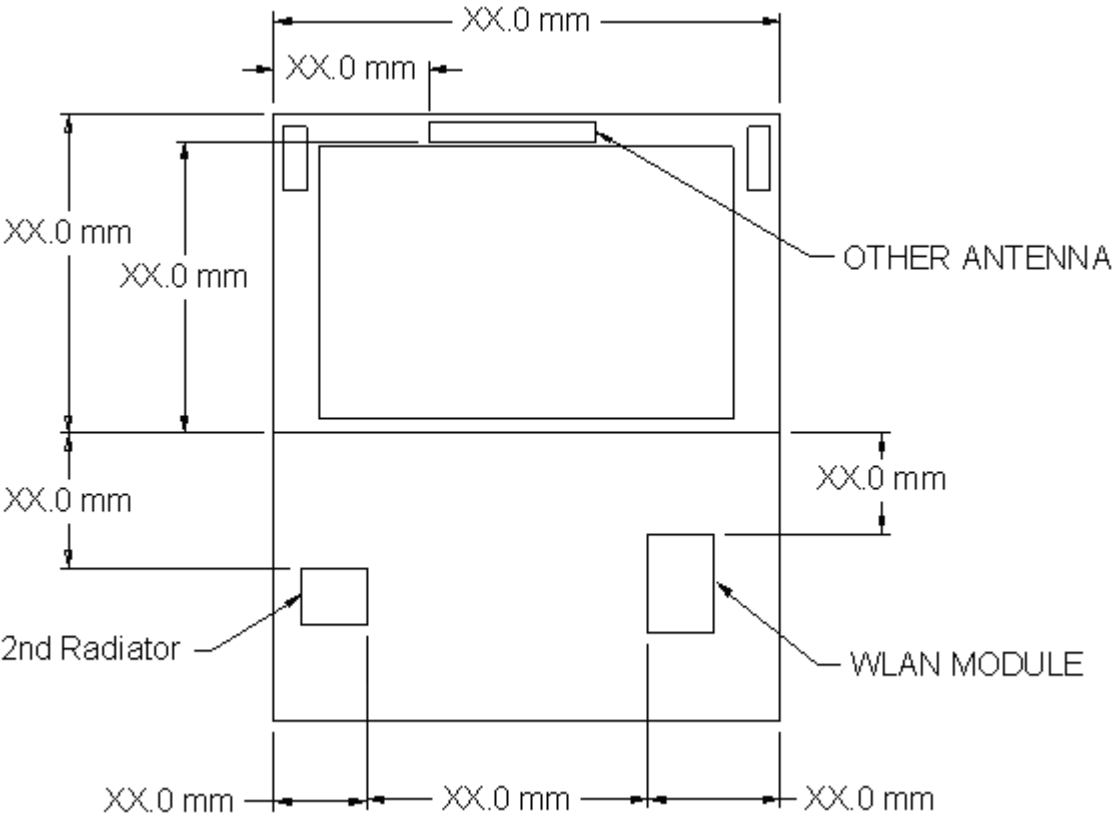
Include a **dimensioned photo or dimensioned drawing** showing the distance (mm) between the transmit (main) antenna and the user (excluding hands, wrist, feet, lap/ thigh, and ankle)



Section 7. Diagram Example of Co-Location Antenna Separation

Include a **dimensioned photo or dimensioned drawing** showing the distance (mm) between WLAN antenna and 2nd radiator transmit antenna.

(Note: Due to the evolving rules regarding co-location, each platform will need to be reviewed on a case by case basis)



Section 8. Local representative contact information

Local representative contact information is required for regulatory support for target countries below.

	Local company name	Contact name	Phone number	FAX Number	e-Mail Address	Notes
Argentina						
Brazil						
Indonesia						
Israel						
Malaysia						
Mexico						
Singapore						Telecommunication Equipment Dealer License Required
South Africa						
USA, Canada						