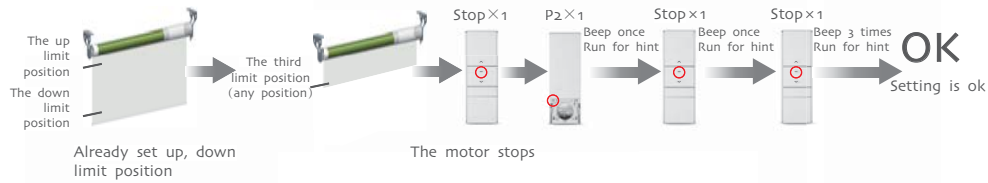
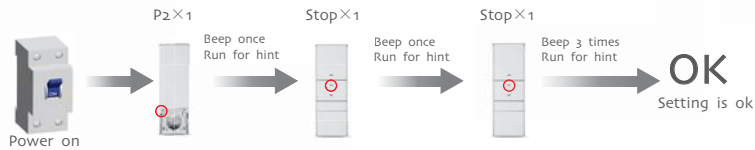


The third limit position setting



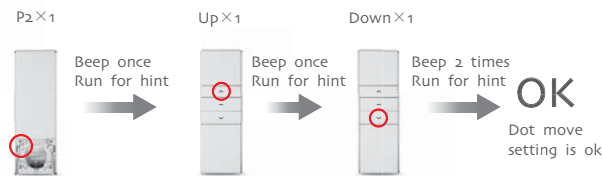
The third limit position cancelled



A Dot-move setting

Additional function

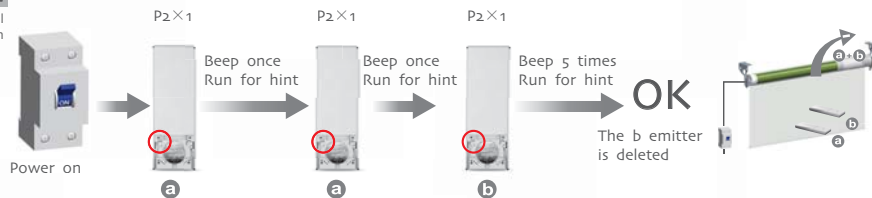
! Repeat setting, function is cancelled; In the dot-move mode, it will move when you loose the button



A Delete one emitter

Additional function

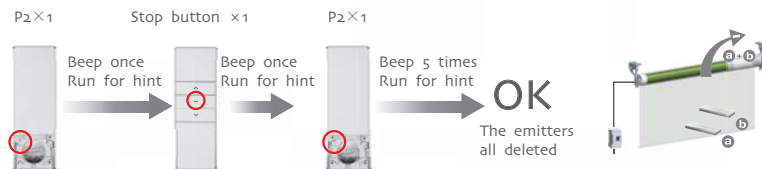
! With the same method, you only can delete the emitter b not the emitter a



A Delete emitter

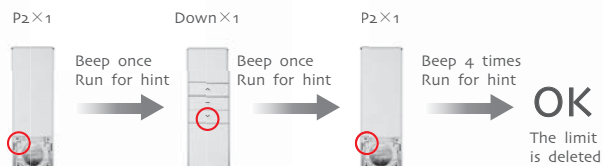
Additional function

! To clean up the emitter means deleting all the memory of emitter and limit switch in the motor receivers



A Delete limit

Additional function



DM28CEQ

Tubular Motor Specification

Version NO.: A/00

T
Technical support

Technical support



It's strictly prohibited to beat the motor in transport, storage, installation and use process. Please minimize the motor vibration.



DM28CEQ Tubular Motor

One motor maximum can store 20 channels, over 20 channels, if still need add new emitters, it will be repeating covered last channel.



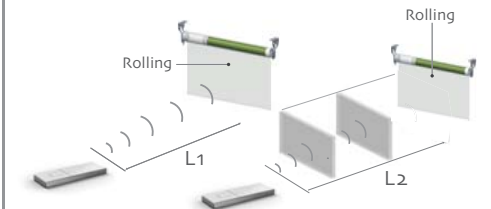
- Please set the limit position before use.
- When in the group control mode, the setting up, deleting programme, setting limit are unworkable.

T
Technical support

Control range



Effective transmitting distance may have deviation due to actual environment



	L1 open	L2 partition	Emission frequency
12V	200m	35m	433.92/868 MHz

T
Technical support

Matchable emitter



T
Technical support

Button specification



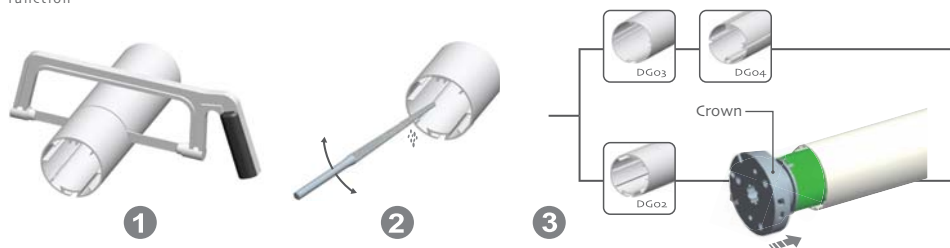
- Press setting button (in limit head) for 2s, same as Bond rally switch, which controls the motor Up, Stop, Down;
- Press setting button (in limit head) for 2s-4s, the motor will run for hint; loose it, the motor beeps once, the emitter could be added (run for hint for once);
- Press on setting button (in limit head) for 6s-11s, the motor will run for hint; loose it, the motor beeps twice, then motor direction has been changed (run for hint for 2 times);
- Press on setting button (in limit head) over 11s, the motor will run for hint; loose it, the motor beeps three times, then motor restore the factory default settings without any previous record (run for hint for 3 times).

E: Electronic /
Electronic limit +
Built-in receiver



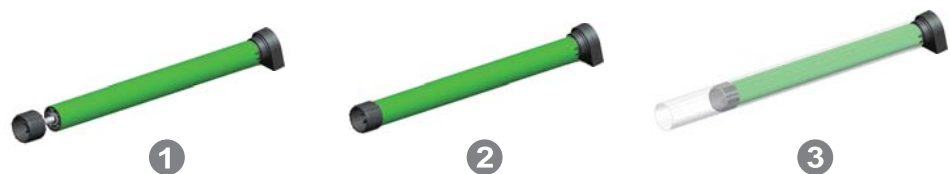
A Crown installation

Additional function



A Drive adapter installation

Additional function



A Bracket installation

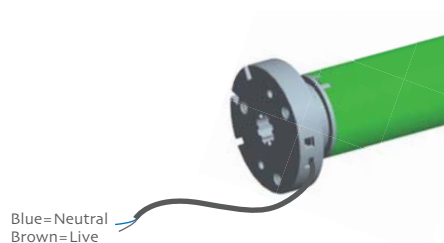
Additional function



A Rechargeable Description

Additional function

Use with DC731E;

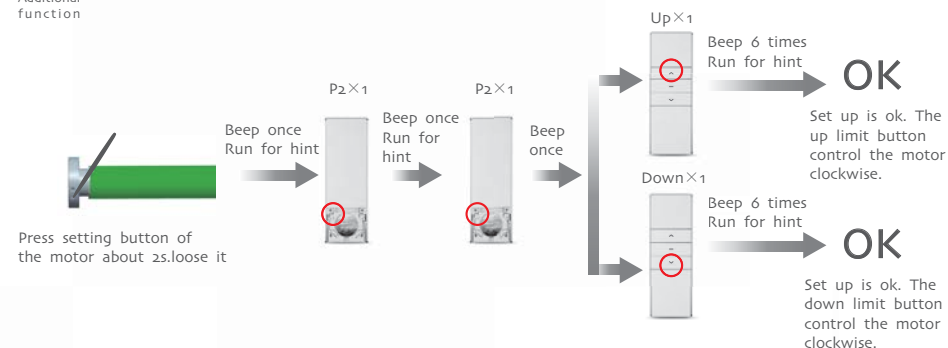


A Setting up

Additional function

During the settings, the time between two operation must be shorter than 6s, otherwise it will quit the setting

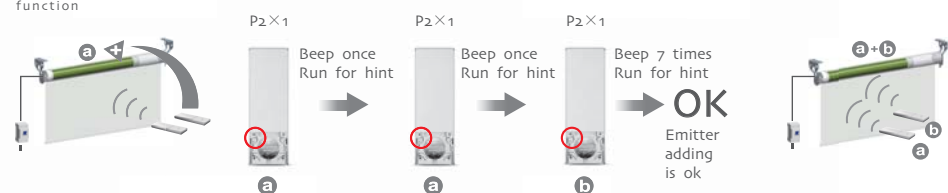
If the motor already experienced match code, the memory will be cleared if do it again. If you have matched the codes, connect to the power, the motor will work normally, if not, the motor will beep 1 time and turn to remind you entry



A Add Emitter

Additional function

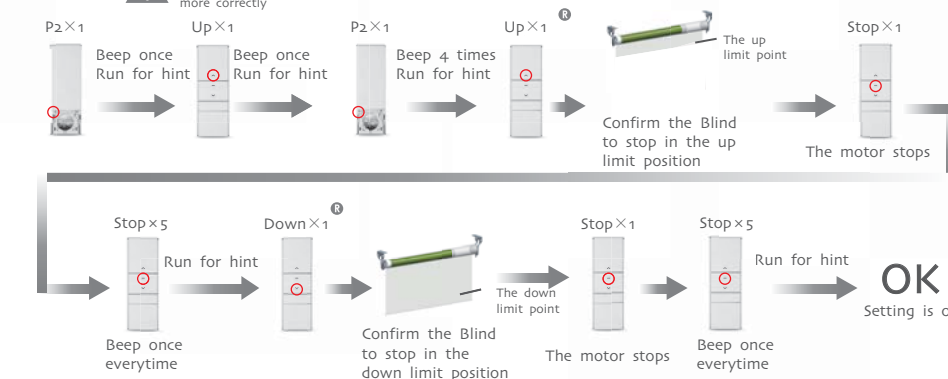
Emitter a is the one already matched code, while emitter b has not



A Set up / down limit position

Additional function

① It is invalid when the up limit and down limit are at the same location
② After limit setting, with power and memory function;
③ into the match-code status 2 minutes later, it will quit out the setting limits status automatically
④ In the process of adjusting the up / down limit: when the motor moving up or down, press the setting button once, the motor will be under the step-moving status, press the setting button again to quit the step-moving status
⑤ The step-moving status: the motor will run up or down by the way of step-moving so that the limit position can be adjusted more correctly



A The third limit position setting

Additional function

① After the up limit and down limit setting, you can set the third limit point between them as the half open position; ② The third limit point will be cancelled as the cancellation of limit and code matching; ③ Long press the stop button for 3s, the roller blinds will move to the third limit, if the motor is in the dot-move status, long press the stop button for 3s, the motor will move to the down limit firstly, then move to the third limit.

FCC STATEMENT

1. This device complies with Part 15 of the FCC Rules. Operation is subject to the following two conditions:

(1) This device may not cause harmful interference.

(2) This device must accept any interference received, including interference that may cause undesired operation.

2. Changes or modifications not expressly approved by the party responsible for compliance could void the user's authority to operate the equipment.

NOTE: This equipment has been tested and found to comply with the limits for a Class B digital device, pursuant to Part 15 of the FCC Rules. These limits are designed to provide reasonable protection against harmful interference in a residential installation.

This equipment generates uses and can radiate radio frequency energy and, if not installed and used in accordance with the instructions, may cause harmful interference to radio communications. However, there is no guarantee that interference will not occur in a particular installation. If this equipment does cause harmful interference to radio or television reception, which can be determined by turning the equipment off and on, the user is encouraged to try to correct the interference by one or more of the following measures:

- Reorient or relocate the receiving antenna.

- Increase the separation between the equipment and receiver.

- Connect the equipment into an outlet on a circuit different from that to which the receiver is connected.

- Consult the dealer or an experienced radio/TV technician for help.