

# OMNIA Q5



English  
User Manual

## OMNIA Q5 5-in-1 Wireless Charging Station

### Specification

#### Input

- Wireless Charging Base:  
5V=3A, 12V=3A, 15V=3A, 20V=3A (PDS/QC)
- Wireless Charging Pad:  
5V=3A, 9V=2A, 12V=1.5A (PDS/QC)

#### Output

- Wireless Phone Charging Pad:  
5V=1A, 9V=1.12A, 12V=1.2A, 15W max.
- Wireless Charging Area: 5V=1A, 5W max.
- Apple Watch Charging Port: 5V=1A, 5W max.
- iPad Charging Port: 9V=1.33A, 12V=1.2A, 15W max.
- Apple Pencil Charging: 5V=1A, 5W max.

Size: 200 x 120 x 150 mm Weight: 498 g  
Warranty: 3 years

## Instructions



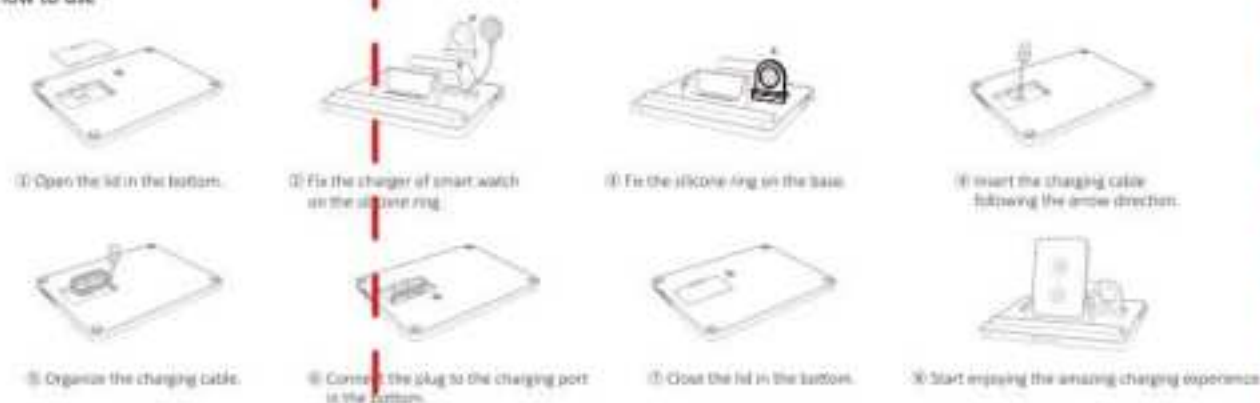
- Apple Watch / Samsung Watch chargers are not included.
- To achieve the best cable storage experience, please use original Apple Watch / Samsung Watch chargers under 1 meter in length.
- For the best charging experience, please use the adapter above 45W.

## Light Mode



- Standby Mode: Blue light on for 3 seconds
- Charging Mode: Green light on
- FOD Mode: Green / Blue light flashes alternately

## How to use



## Usage mode



## Protective Function

- Multiple Circuit Protection
- Over-Heat Protection
- Short-Circuit Protection
- Over-Voltage Protection
- Over-Current Protection
- Flame Retardant Protection

## Attention

- Do not disassemble, puncture, drop, bend or modify
- Do not shake while charging
- Unplug the device when fully charged
- Do not expose to liquids
- Keep away from children
- Avoid extreme temperatures
- 3 years warranty
- For the fastest and safest charge, use an ADAM cable, your device's original cable or a certified cable (such as MFi)



More information  
please visit ADAM store

**FCC Warning Statement**

Changes or modifications not expressly approved by the party responsible for compliance could void the user's authority to operate the equipment. This equipment has been tested and found to comply with the limits for a Class B digital device, pursuant to Part 15 of the FCC Rules. These limits are designed to provide reasonable protection against harmful interference in a residential installation. This equipment generates uses and can radiate radio frequency energy and, if not installed and used in accordance with the instructions, may cause harmful interference to radio communications. However, there is no guarantee that interference will not occur in a particular installation. If this equipment does cause harmful interference to radio or television reception, which can be determined by turning the equipment off and on, the user is encouraged to try to correct the interference by one or more of the following measures:

- Reorient or relocate the receiving antenna.
- Increase the separation between the equipment and receiver.
- Connect the equipment into an outlet on a circuit different from that to which the receiver is connected.
- Consult the dealer or an experienced radio/TV technician for help.