

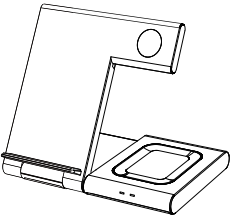
正面

3-in-1 Wireless Charger

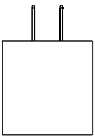


User Manual

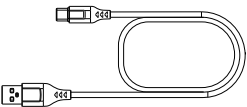
Packing list



3-in-1 Wireless Charger

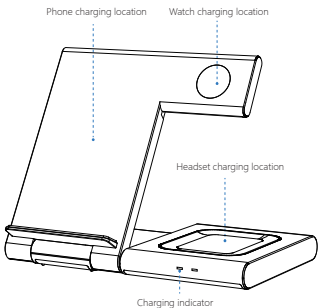


18W Adapter



USB-A to USB-C Charging Cable
(1m)

Product Description



Product Specification

Model: W335B
Output: 18W Max

Input: 5V=3A 9V=2A

Compatible Models

1. Smartphone

For iPhone: iPhone 15,iPhone 15 Plus,iPhone 15 Pro,iPhone 15 Pro Max, iPhone 14,iPhone 14 Plus,iPhone 14 Pro,iPhone 14 Pro Max,iPhone 13, iPhone 13 Pro,iPhone 13 Pro Max,Phone 13 mini,iPhone 12,iPhone 12 mini, iPhone 12 Pro,iPhone 12 Pro Max,iPhone 11,iPhone 11 Pro,iPhone 11 Pro Max, iPhone XS,iPhone XS Max,iPhone XR,iPhone XR Max,iPhone 8, iPhone 8 Plus

2. Apple headphones

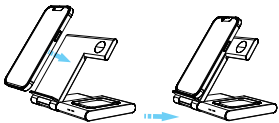
For Apple Headphones: AirPods Pro2,AirPods Pro,AirPods 3,AirPods 2

3. Smartwatch

For the watch: iWatch Hermes/Nike/Ultra 2/Ultra 9/8/7/6/5/4/3/2/SE

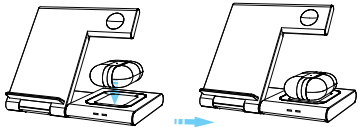
How to use the products

1. Charging the cell phone: Connect the charging head to the wireless charging input-C type port, the wireless charger indicator red light is always on, enter standby mode. When the phone is placed in the wireless charging area, the blue light is always on, indicating that the phone is charging normally. If the phone is full, the red light will be on. If the phone is not charging properly, the red light flashes rapidly

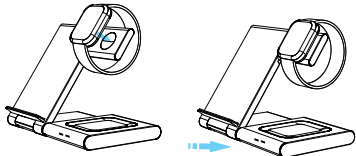


反面

2. Headset charging: place the Bluetooth headset in the headset charging position.
(Note: Please do not wear 3mm silicone shield, otherwise it may lead to poor contact can not be charged)



3. Charge the watch: Place the watch on the watch charging module and when you see the charging indication light up on the watch display, it means the watch is charging properly.



Warm Tips

Please pay attention to the following issues, otherwise it may cause irregular charging, high charging temperature, intermittent charging, or even no charging.

1. Please place your phone/watch/headset in the correct charging area.
2. We recommend fast charger (9V/2A), which can charge three devices at the same time while maintaining the fastest speed. (5V/3A) chargers can only provide normal charging speed and will be slower than fast chargers.
3. The charging distance is 2-8mm, please do not wear a protective cover that is thicker than 3mm.
4. During the charging process, there is no metal or magnetic object around 6 cm in the center of the back of the phone
5. The lower the temperature, the faster the charging speed, winter charging speed is faster than summer.
7. Please do not charge in high temperature and humid environment to avoid damage to the circuit.
8. Please put it out of reach of children to avoid unnecessary accidents.

About the FCC

This equipment complies with FCC radiation exposure limits set forth for an uncontrolled environment. This equipment should be installed and operated with minimum distance 20cm between the radiator & your body.

This device complies with part 15 of the FCC rules operation is subject to the following two conditions:

- (1) this device may not cause harmful interference.
- (2) this device must accept any interference received including interference that may cause undesired operation.

FCC Warning:

Any Changes or modifications not expressly approved by the party responsible for compliance could void the user's authority to operate the equipment.

Note: This equipment has been tested and found to comply with the limits for a Class B digital device, pursuant to part 15 of the FCC Rules. These limits are designed to provide reasonable protection against harmful interference in a residential installation. This equipment generates uses and can radiate radio frequency energy and if not installed and used in accordance with the instructions may cause harmful interference to radio communications.

However there is no guarantee that interference will not occur in a particular installation. If this equipment does cause harmful interference to radio or television reception which can be determined by turning the equipment off and on. The user is encouraged to try to correct the interference by one or more of the following measures:

- Reorient or relocate the receiving antenna.
- Increase the separation between the equipment and receiver.
- Connect the equipment into an outlet on a circuit different from that to which the receiver is connected.
- Consult the dealer or an experienced radio/TV technician for help.