

9. SYSTEM TEST CONFIGURATION

Use a block of foam and combined it with EUT wrapping rubber band around it. This way it can test X.Y, and Z axis. To activate continuous transmission, place a small plastic block between rubber band and EUT push button.



X-Axis



Y-Axis



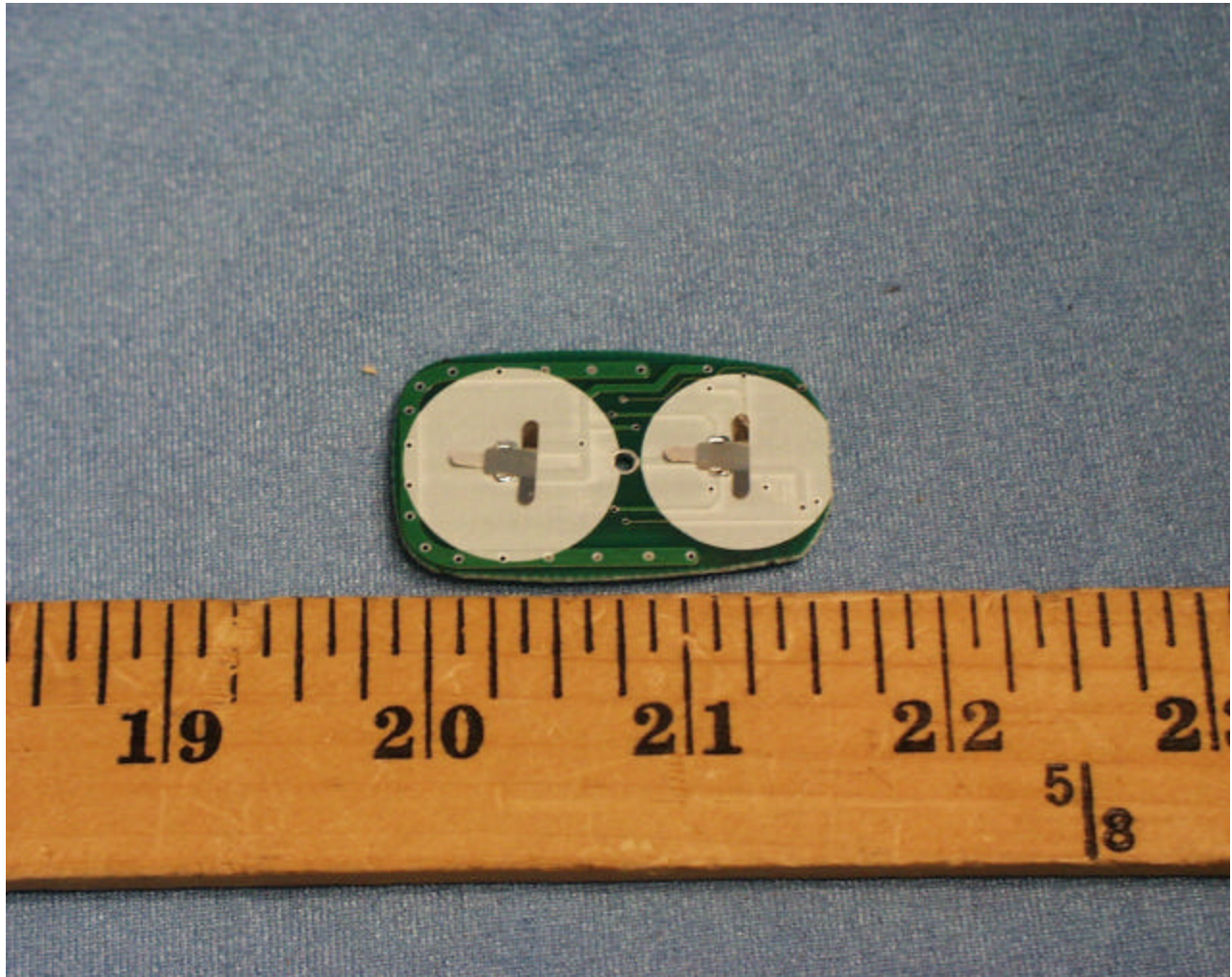
Z-Axis

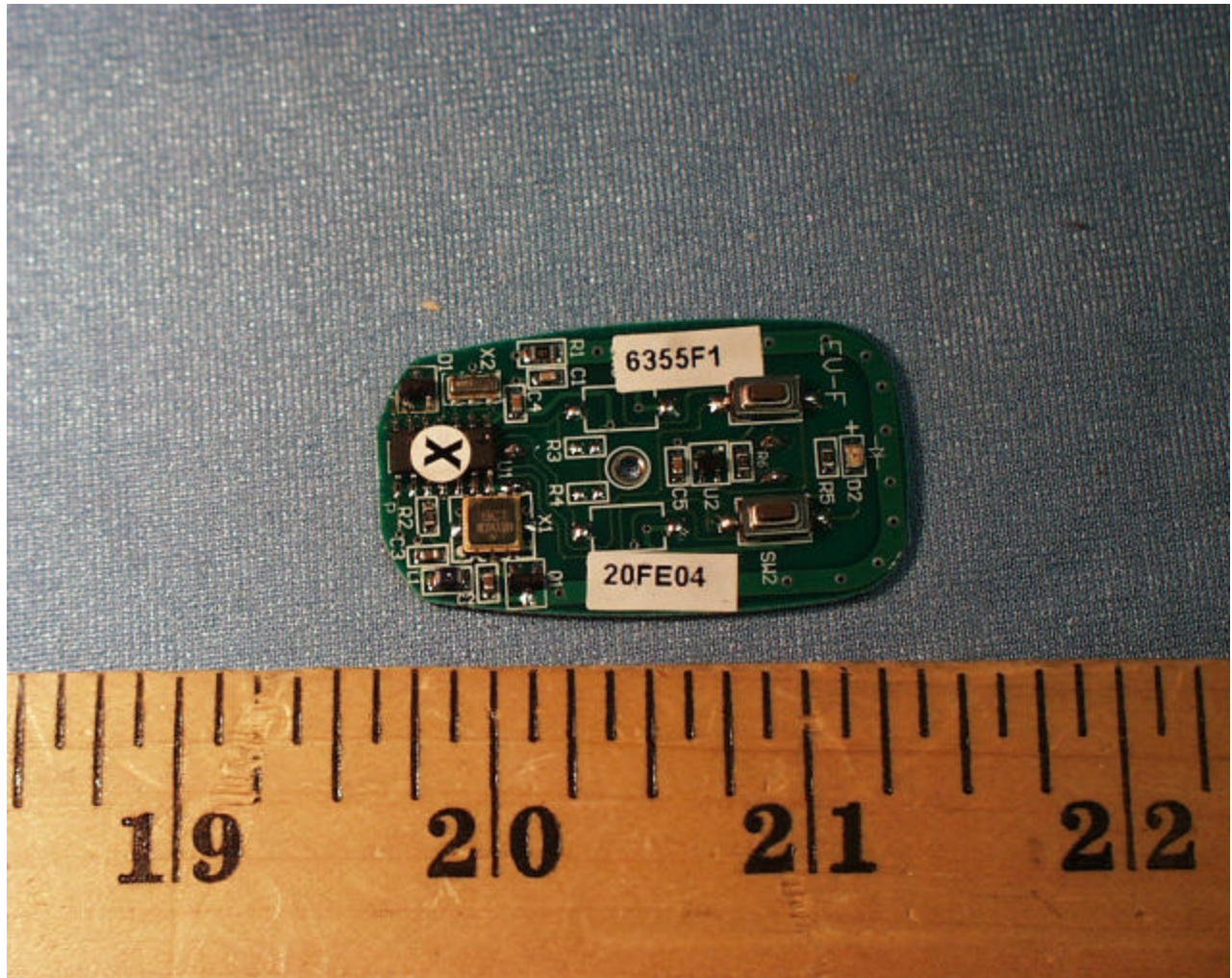
Radiated Open Site Test Set-up

EUT PHOTOGRAPHS









END OF REPORT