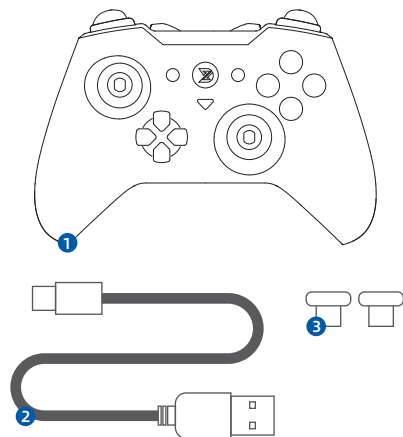
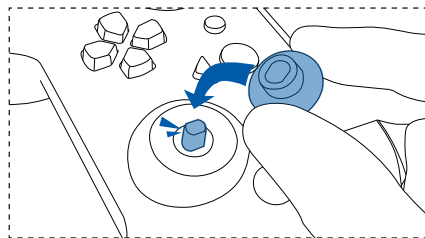


Package List



- 1 Controller
- 1 Data line
- 2 Thumb sticks caps

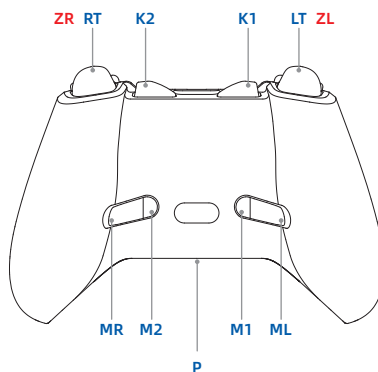
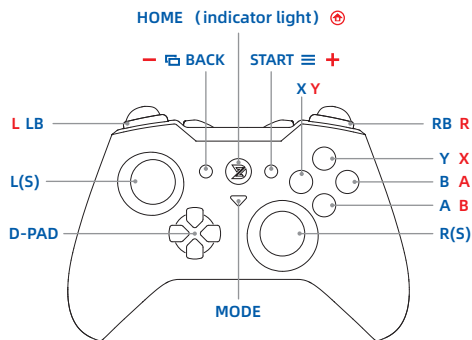


Warning: please insert the thumb sticks caps before turn on the controller!!!



This description is a simplified version.
For more information,
please scan the QR code.

The blue keys are common keys
and the red keys are Nintendo Switch keys.

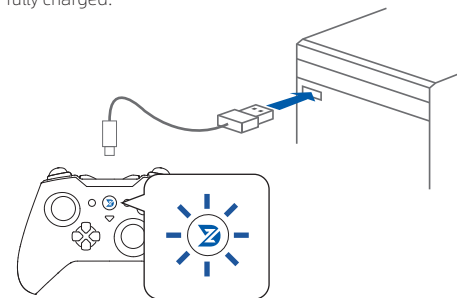


Turn on

Press **HOME** button 1 second to turn on the controller.

Connect to computer

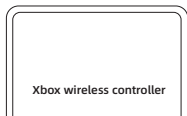
- 1、Connect the controller to the computer with data cable.
- 2、The controller indicator flashing blue.
- 3、The indicator shines blue when the battery is fully charged.



Connect to phone/tablet

- 1、Turn on the Bluetooth of your phone/tablet.
- 2、Press and hold the **A/B** button first, then press the **HOME** button to turn it on.
The indicator flashes **cyan**.
- 3、Press and hold the **P** button for 3 seconds, the indicator flashes **cyan** and **yellow** alternately.
- 4、Search **Xbox wireless controller** and click pair.
- 5、If connection succeeds, the indicator shines **cyan**.

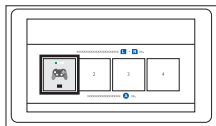
After pairing, you can quickly connect by pressing the **A/B** button and **HOME** button directly to turn on the device, as long as you have not paired another device in the same mode.



Connect to Switch

- 1、Turn on Switch and click "**Controllers - Change Grip/Order**" in order.
- 2、Press and hold the **X/Y** button first, then press the **HOME** button to turn it on. The indicator flashes **red**.
- 3、Press and hold the **P** button for **3** seconds, the indicator flashes **red** and **yellow** alternately.
- 4、If connection succeeds, the indicator shines **red**.

After pairing, you can quickly connect by pressing the **A/B** button and **HOME** button directly to turn on the device, as long as you have not paired another device in the same mode.



Double-click the **MODE** button to take pictures.
Double-click and then hold the **MODE** button to record the first 30 seconds of game screen.

Turn off

Press **HOME** button 4 seconds to turn off the controller.

Reset function

Press and hold the **BACK** button and **MODE** button simultaneously for 2 seconds to reset all functions of the controller.

Low battery

Joystick light ring flashes red when the battery is below 20%.

Charging

5V 1A chargers are applicable.

The indicator flashes during charging and turns off or stays on when fully charged.

If there is no **5V 1A** charger, plug it into the USB port of your computer for charging.

FCC Warning Statement Changes or modifications not expressly approved by the party responsible for compliance could void the user's authority to operate the equipment. This equipment has been tested and found to comply with the limits for a Class B digital device, pursuant to Part 15 of the FCC Rules. These limits are designed to provide reasonable protection against harmful interference in a residential installation. This equipment generates uses and can radiate radio frequency energy and, if not installed and used in accordance with the instructions, may cause harmful interference to radio communications. However, there is no guarantee that interference will not occur in a particular installation. If this equipment does cause harmful interference to radio or television reception, which can be determined by turning the equipment off and on, the user is encouraged to try to correct the interference by one or more of the following measures:
-- Reorient or relocate the receiving antenna.
-- Increase the separation between the equipment and receiver.
-- Connect the equipment into an outlet on a circuit different from that to which the receiver is connected.
-- Consult the dealer or an experienced radio/TV technician for help.

This device complies with part 15 of the FCC Rules.

Operation is subject to the following two conditions:

- (1) This device may not cause harmful interference, and
 - (2) this device must accept any interference received, including interference that may cause undesired operation.
- The device has been evaluated to meet general RF exposure requirement.

Product name: ZD-O RGB

Model: ZD-Q23

Battery capacity: 800 mAh

Operating current: < 150 mA

Compatibility protocols: Bluetooth 3.0/4.0/5.0 USB 2.0/3.0

Operating temperature: -10 °C ~ 60 °C

Weight: ≈206 g

Frequency range: 2402 MHz ~ 2480 MHz

Transmitting power: < 1 dBm

Specifications are subject to change without notice.

中国制造

MADE IN CHINA