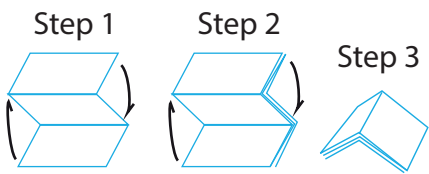


CO-730 - IB (English)
Size: 165 x 180 mm (folded: 82.5 x 60 mm)
Color: 1C + 1C (Black)
Material: 80gsm wood free paper
July 21, 2022



Model: CO-730
Tiny Tunes Music Melon

Important Message to Customers

Thank you for purchasing one of our many top-quality electronic products. Please take a moment to read through these instructions to help you understand the safe and proper way to use this toy to extend its usability.

Limited 1 Year Warranty Information

KIDdesigns warrants this product to be free from defects in workmanship and materials, under normal use and conditions, for a period of one year from the date of original purchase. Should this product fail to function in a satisfactory manner, it is best to first return it to the store where it was originally purchased. Should this fail to resolve the matter and service still be required by reason of any defect or malfunction during the warranty period, KIDdesigns will repair or, at its discretion, replace this product without charge. This decision is subject to verification of the defect or malfunction upon delivery of this product to the Factory Service Center authorized by Customer Service. If service is required, please contact Customer Service at kiddesigns.com/support to obtain a Return Authorization Number and shipping instructions.

Disclaimer of Warranty

NOTE: This warranty is valid only if the product is used for the purpose for which it was designed. It does not cover (i) products which have been damaged by negligence or willful actions, misuse or accident, or which have been modified or repaired by unauthorized persons; (ii) cracked or broken cabinets, or units damaged by excessive heat; (iii) damage to digital media players, CD's or tape cassettes (if applicable); (iv) the cost of shipping this product to the Factory Service Center and its return to the owner.

This warranty is valid only in the United States of America and does not extend to owners of the product other than to the original purchaser. In no event will KIDdesigns or any of its affiliates, contractors, resellers, their officers, directors, shareholders, members or agents be liable to you or any third party for any consequential or incidental damages, any lost profits, actual, exemplary or punitive damages. (Some states do not allow limitations on implied warranties or exclusion of consequential damages, so these restrictions may not apply to you.) This warranty gives you specific legal rights, and you may also have other rights which vary from state to state.

Your acknowledgement and agreement to fully and completely abide by the above mentioned disclaimer of warranty is contractually binding to you upon your transfer of currency (money order, cashier's check, or credit card) for purchase of your KIDdesigns product.

Questions? Visit www.kiddesigns.com
©2022 All Rights Reserved.

CO-730-072122-A Printed in China

FCC Information

This device complies with Part 15 of the FCC Rules. Operation is subject to the following two conditions: (1) This device may not cause harmful interference, and (2) this device must accept any interference received, including interference that may cause undesired operation.

NOTE: This equipment has been tested and found to comply with the limits for a Class B digital device, pursuant to Part 15 of the FCC Rules. These limits are designed to provide reasonable protection against harmful interference in a residential installation. This equipment generates, uses and can radiate radio frequency energy and, if not installed and used in accordance with the instructions, may cause harmful interference to radio communications. However, there is no guarantee that interference will not occur in a particular installation. If this equipment does cause harmful interference to radio or television reception, which can be determined by turning the equipment off and on, the user is encouraged to try to correct the interference by one or more of the following measures:

- Reorient or relocate the receiving antenna.
- Increase the separation between the equipment and receiver.
- Connect the equipment into an outlet on a circuit different from that to which the receiver is connected.
- Consult the dealer or an experienced radio/TV technician for help.

WARNING: Changes or modifications to this unit not expressly approved by the party responsible for compliance could void the user's authority to operate the equipment.

CAN ICES-3 (B)/NMB-3(B)

GENERAL BATTERY PRECAUTIONS

Never use or charge a battery if it appears to be leaking, or in any way abnormal.

Avoid charging battery when the temperature is not within 5°C - 35° C (41° - 95° Fahrenheit).

Never expose a battery to any liquid, or to excessive heat such as direct sunlight or fire.

Never leave in an unventilated vehicle where excessive internal temperatures may be encountered.

Always keep batteries out of the reach of infants and small children.

Always charge lithium devices on a non-flammable surface - wooden tables/ carpeted floors are not recommended charging surfaces.

If the unit is to be unused for an extended period of time, such as a month or longer, charge the unit fully before storage.

WARNING/DISPOSAL OF UNIT

Do NOT attempt to change or disassemble the built-in battery. Doing so will void the warranty and could cause personal injury and damage to your device.

Do not dispose of batteries in the household trash or fire. Always dispose of used batteries/electronics in accordance with the prevailing community regulations.

To find a drop-off location near you, visit www.call2recycle.com

Maintenance

It is important to keep the unit as dry and clean as possible. Clean the unit with a soft cloth moistened only with mild soap and water. Stronger cleaning agents, such as thinner or similar materials are not recommended, as they may damage the surface of the unit.

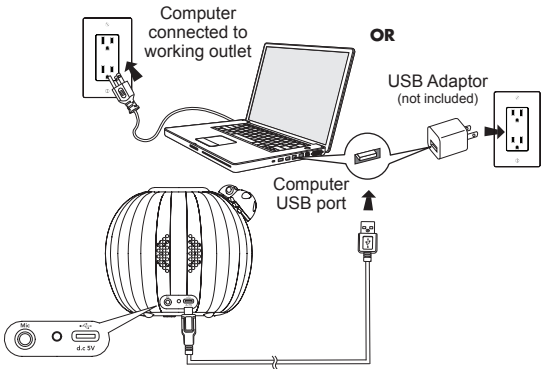
Questions or Comments

For questions or comments regarding this or other KIDdesigns products, please visit our website: www.kiddesigns.com

Charging the Battery

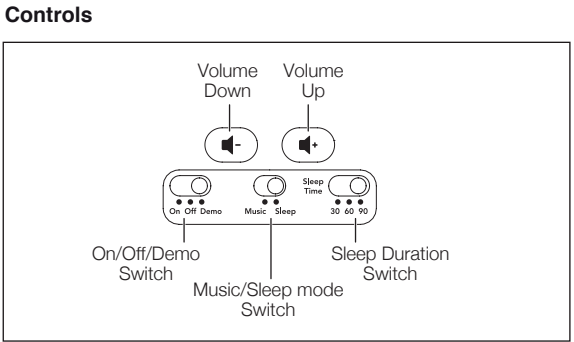
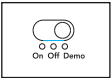
ATTENTION: Charging the battery should only be performed by an adult. Follow these instructions:

1. Connect the larger plug of the included USB-C charging cable to the powered USB port of a computer or a USB/AC adapter.
2. Connect the smaller plug to the USB-C charging port on the back of the unit.
3. The charging LED flashes red when the unit needs to be charged, glows solid red while charging, and glows solid blue once fully charged.



Demo Mode

This unit ships in demo mode for in-store demonstration purposes. When you are ready to play, slide the ON/OFF/DEMO Switch located on the bottom of the unit to ON.



How to Use Musical Figures:

The unit comes with 4 musical figures - each figure plays a different song! To add a song, place a figure on the magnetic platform on the top of the unit. Press the Ladybug to play a song.

Note: Musical Figures will play a song in either Music Mode or Sleep Mode. (Additional figures sold separately - each new figure will add another song to the unit).

Music Mode:

Slide the Mode Switch on the top of the unit to Music Mode to listen to built-in songs. Press the Ladybug to play a song. Press again to stop. Press again to skip to the next song.

Sleep Mode:

Slide the Mode Switch on the top of the unit to Sleep Mode to play soothing sounds and lullabies. There is also a switch on the top of the unit with timer settings - choose between 30, 60, or 90 minutes. Press the Ladybug to cycle through 6 tracks (3 soothing sounds, and 3 lullabies).

Using the Microphone:

Connect the included microphone to the microphone jack on the back of the unit to sing along! An additional figure is included to use as a microphone stand - place it on the magnetic platform and rest the microphone on top.

Note: Unplug the microphone from the unit while using Sleep Mode to avoid any feedback.

ISED statements

This device contains licence-exempt transmitter(s)/receiver(s) that comply with Innovation, Science and Economic Development Canada's licence-exempt RSS(s). Operation is subject to the following two conditions:

- (1) This device may not cause interference.
- (2) This device must accept any interference, including interference that may cause undesired operation of the device.

This device comply with ISED RF exposure requirement, users can obtain Canadian information on RF exposure and compliance.

Any Changes or modifications not expressly approved by the party responsible for compliance could void the user's authority to operate the equipment.

L'émetteur/récepteur exempt de licence contenu dans le présent appareil est conforme aux CNR d'Innovation, Sciences et Développement économique Canada applicables aux appareils radio exempts de licence. L'exploitation est autorisée aux deux conditions suivantes :

- (1) L'appareil ne doit pas produire de brouillage;
- (2) L'appareil doit accepter tout brouillage radioélectrique subi, même si le brouillage est susceptible d'en compromettre le fonctionnement.

L'appareil est conforme aux exigences d'exposition RF ISED, les utilisateurs peuvent obtenir des informations canadiennes sur l'exposition aux RF et la conformité.

Tout changement ou modification non expressément approuvé par la partie responsable de la conformité pourrait annuler le droit de l'utilisateur à utiliser l'équipement.