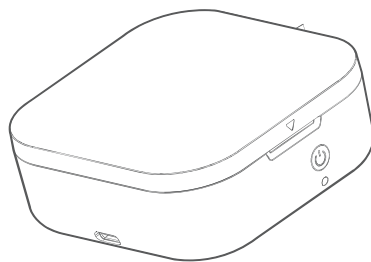


Instruction

Q30 Product Instruction



Please read this instruction book carefully before operating the product
For more detailed information, please check the official website: www.phomemo.com



Operation Guide QR code

Please scan the QR code to get the printer operation guide.

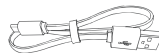
01. Packing list



Printer*1



Product Instruction*1



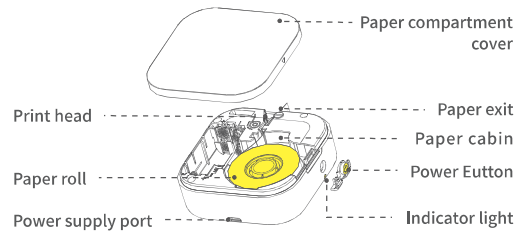
Charging Cable*1



• The number of paper rolls in the list is subject to the actual shipment

02. Parts Description Appearance Introduction

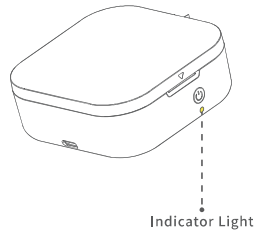
01 Printer Display



02 Label Paper Display (Various Labels Available For Purchase)



02. Parts Description Power Button and Indicator light



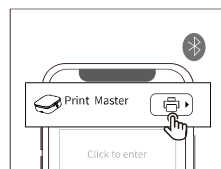
Introduction of the Function of The Power Button

Button	Operation Method	Functions
Power Button	Press and Hold 2S	Turn On/Off
	Click	Print out the paper
	Double Click	Print the content of the self-test paper

Indicator Light

● Green-Keep on	Normal status (printing)
	Access the power adapter
● Red-Keep on	Error (lack of paper, cover opened, high temperature)
⚡ Red-Flash quickly	Low power supply, printer off

03. APP Download Method



Method 2: Search and download



Method 1: Please use your mobile phone to scan the QR code to download the APP

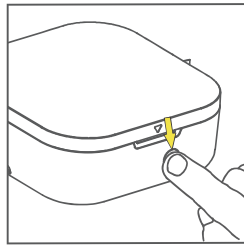


NOTE

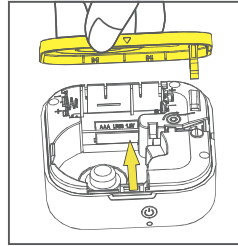
- This product needs to be connected to the printer in the APP
- Due to the requirements of mobile phone system, the Android mobile phone will use the user's geographic location when connecting, so that the user needs to turn on the GPS and confirm the authorization

04. Boot Guide

- 01 Press and hold for 2s to turn on

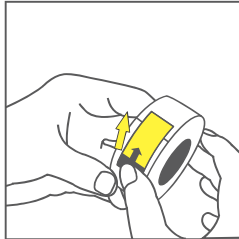


- 02 Open the paper compartment cover of the machine

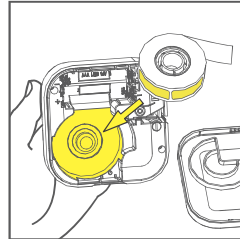


05. Paper Roll Installation

- 01 Take out the label paper, tear off the anti-loosening sticker



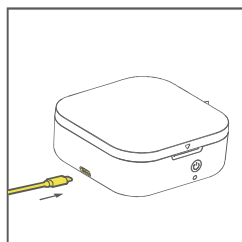
- 02 Put the print face in the paper hatch toward the battery



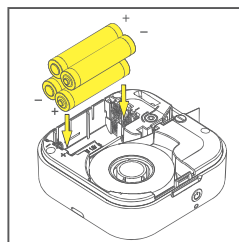
05. Paper Roll Installation

Guidance on switching on the power supply

Mode 1: The charging cable can be connected, and switch on the power supply (if the battery is used for the power on, this step can be ignored)



Mode 2: 4 AAA battery can be installed, and ensure that the positive and negative direction of the battery is correct (if the charging cable is used, this step can be ignored)

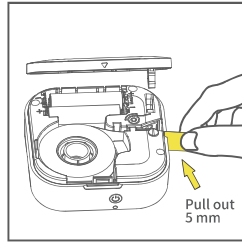


NOTE

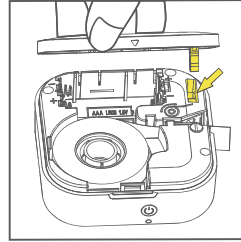
- This product supports plug-in/dry battery use, but it does not support charging

05. Paper Roll Installation

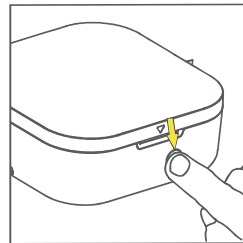
03 Pull out the label paper by 5 mm in length for normal printing



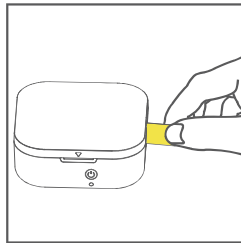
04 Closing the cover after alignment the cover open position



05 click the power button to identify the label position



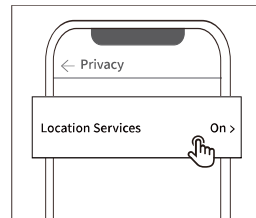
06 Come out a piece of paper, positioning completed



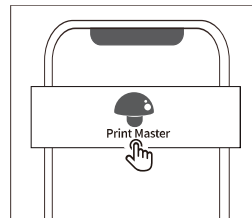
• When installing or replacing the label roll for the first time, the label position identification is required.(Step **05**)
If the label position identification is not carried out(Step **05**), failures may occur such as first printing missing, not centered, etc

06. Printer Connection

01 Turn on GPS (Android mobile phone only)

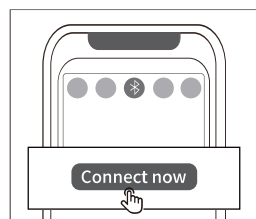


02 Open the APP

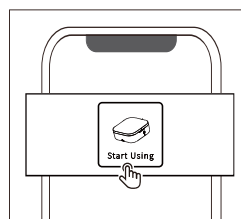


• Due to the requirements of mobile phone system,the Android mobile phone will use the user's geographic location when connecting,so that the user needs to turn on the GPS and confirm the authorization

03 Click to search for the device



04 Connect immediately



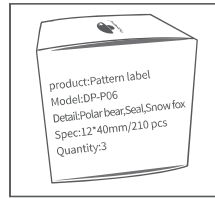


• When connecting device in the APP, please make sure that your printer is turned on and Bluetooth of your mobile phone is turned on

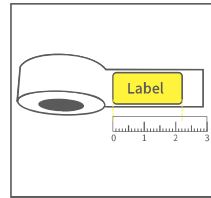
07. Confirm the Label Size

Method I: Check the label paper packaging

Please refer to the actual size used

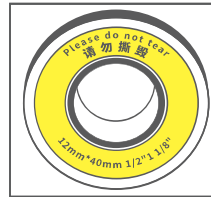


Method II: Use a ruler to measure

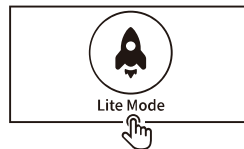


Method III: Check the label paper gasket

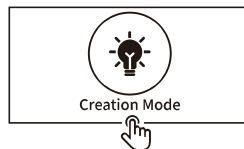
The old and new versions of label paper are being replaced, please refer to the actual shipment



08. Printing Guide **Select Edit Version**

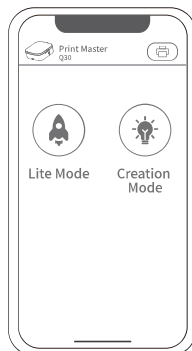


Lite Mode: Simple mode, convenient operation



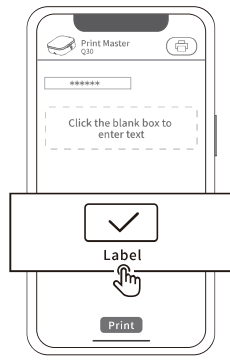
Creation Mode: Custom mode, rich material

The user can view more operation tutorials and switch editing versions in the "home"

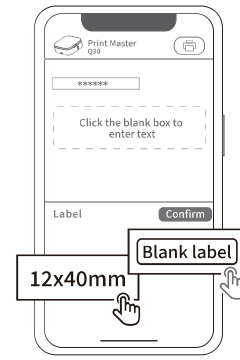


08. Printing Guide **Lite Mode**

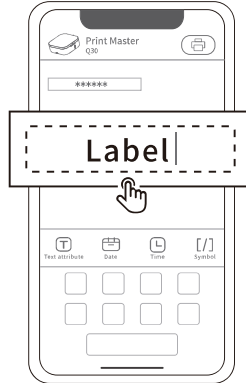
01 Click "Label"



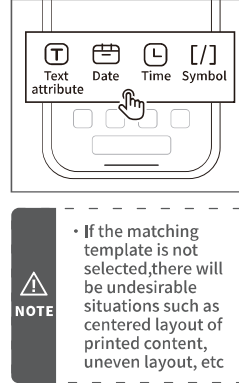
02 Click to select the corresponding label size
(Please refer to the actual size used)











03 Click the blank box to enter text

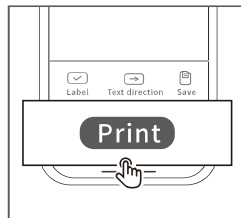


04 Edit function description

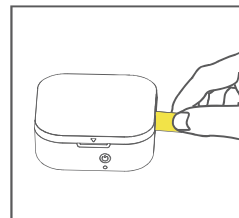


Functions	Operation method	Example
 Text attribute	Click to insert text. User can edit the text size, typesetting and select various fonts, etc	
 Date	Add date	
 Time	Edit specific time point	
 Symbol	Unit symbol	

05 After editing, click to "Print"

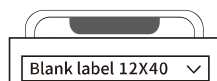


06 After the printing is completed, tear off the label



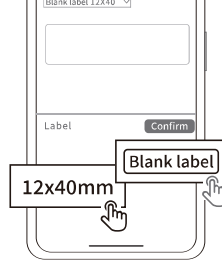
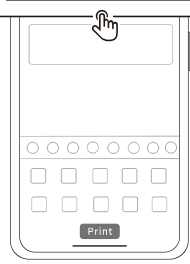
08. Printing Guide Creation Mode

01 Click the size box and select corresponding label size

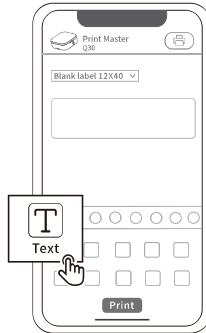


02 Click to select the corresponding label size
Please refer to the actual size used



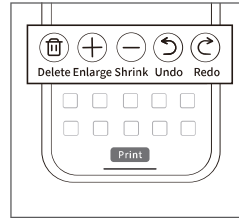


03 Click "(T)" to input text



04 Edit function description

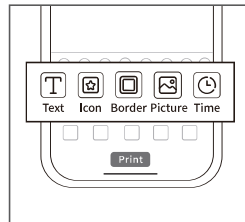
Shortcut keys



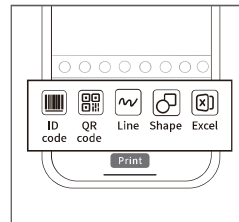
NOTE

- If the corresponding size template is not selected correctly, there will be undesirable situations such as centered printing layout and uneven layout, etc

Editing function





Editing function



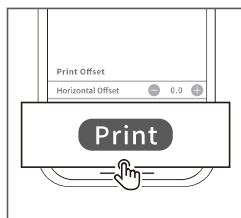
NOTE

- APP functions will be updated with new functions in irregular, please refer to the actual function

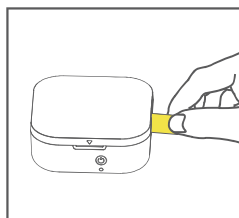
Functions	Description
T	Click to insert text. User can edit the text size, typesetting and select various fonts, etc
Icon	Icon function, click to insert all kinds of cute icons
Border	Click Border Function, and choose various cute borders to decorate your label
Picture	Click to insert the picture you want to edit and print
Time	Insert date and specific time
QR Code	Click to scan the code to identify. It can quickly identify the text content in the QR Code
ID Code	Click to insert a one-dimensional code. Enter the information to be edited, then a one-dimensional code can be automatically generated, and the layout can be adjusted
Line	Click to insert a QR code. Enter the information to be edited, then a QR code can be automatically generated, and the layout can be adjusted
Shape	Insert a line. User can choose a dashed line or a solid line
Excel	Click to insert round or square shapes
	Support table import, therefore quickly

	generating a list that needs to be printed
	Click to recognize text in the picture

05 Click the print label after editing



06 After the printing is completed, tear off the label

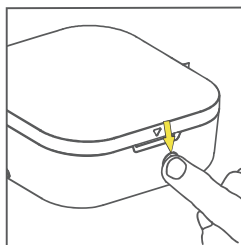


09. product specifications

Product name	Smart Mini Label Maker
Product model	Q30
Printing technology	Thermal printing
Consumable width	12-15mm
Supported consumables	Pre-cut paper, Black mark paper
Printing density	Light, standard, dark
Printing resolution	180dpi
Print head service life	50KM
Communication interface	Bluetooth 4.2
Product Size	82*82*32.5 mm
Power Input	5V=2A
Power supply method	4 AAA battery
	Type-C
Supported operating system	Android
	iOS

10. Daily Cleaning

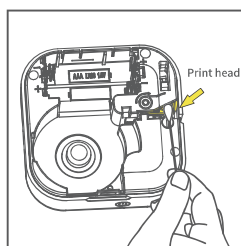
01 Turn off the printer



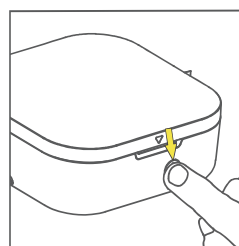
02 Use a cotton swab dipped in alite alcoho



03 Wipe the print head gently



04 Wait for 30 s after the alcohol volatilize dry, boot double-click on the power button to print the self-checking page



注意

• Do not scratch the print head with a hard object, otherwise the print head will be damaged and the printing effect will not be guaranteed.

11. Solutions for Common Problems

Not centered, misplaced, offset, skipped, etc

Please check Whether the paper roll is correctly placed in the machine?

Make sure that the label paper print face is placed in the machine in the direction of the battery. If the placement is error (reversed), it will not be printed

Please check Whether to select the corresponding label size and pattern in the APP?

Whether the matching label size and pattern have been selected in the APP. Please confirm the size and pattern on the label packaging, and select the matching template in the APP.

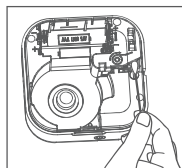
Please check After the machine is turned on, whether to click the power button to allow the machine to calibrate and position the label?

When installing or replacing label paper roll for the first time, the user needs to click the power button to print a blank label so that the print head can identify the position of label paper.

Printing blurry

Please check Whether there is foreign matter or glue on the print head?

There is foreign matter or glue on the print head. Please use a cotton swab dip with a little alcohol to gently wipe the dirt on the print head. Do not turn on the machine immediately after wiping. After the alcohol is evaporated and dry, double-click the power button to print the self-check page after turning on the machine to check the effect.



Can't connect with the printer

Please check Printer cannot be connected: the status of the printer is on, and the mobile phone bluetooth has been turned on?

Please check Printer cannot be connected: is the device connection performed in APP? This product needs to perform the device connection in APP?

Please check Is the mobile phone authorized?

Because of the phone system's requirements, Android phones will use your location when it is connected, and you need to turn on GPS and confirm authorization (other phone systems don't need to turn on this function)

12. After-sale support Product Warranty

Thank you for choosing the Smart Mini Label Maker.

① We will provide customers with reliable "replacement/return" support during the one-year warranty period from the date of purchase;

② Please keep the warranty card in a safe place so that you can read it when needed.

+1855 957 5321 (US only)

support@phomemo.com

www.phomemo.com

YouTube Please scan the QR code to get the printer operation guide.



Operation Guide
QR code

This manual has been carefully checked. If there are printing errors or misunderstandings in the content, please consult customer service.

NOTE: If the supporting software is updated, it will be compiled into the new version of the manual without notice

12. After-sale support FCC Caution

This device complies with part 15 of the FCC Rules. Operation is subject to the following two conditions:

(1) This device may not cause harmful interference, and (2) this device must accept any interference received, including interference that may cause undesired operation.

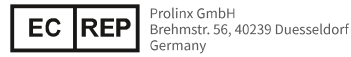
Any Changes or modifications not expressly approved by the party responsible for compliance could void the user's authority to operate the equipment.

Note: This equipment has been tested and found to comply with the limits for a Class B digital device, pursuant to part 15 of the FCC Rules. These limits are designed to provide reasonable protection against harmful interference in a residential installation. This equipment generates uses and can radiate radio frequency energy and, if not installed and used in accordance with the instructions, may cause harmful interference to radio communications. However, there is no guarantee that interference will not occur in a particular installation. If this equipment does cause harmful interference to radio or television reception, which can be determined by turning the equipment off and on, the user is encouraged to try to correct the interference by one or more of the following measures:

- Reorient or relocate the receiving antenna.
- Increase the separation between the equipment and receiver.
- Connect the equipment into an outlet on a circuit different from that to which the receiver is connected.
- Consult the dealer or an experienced radio/TV technician for help.

*RF warning for Portable device:
The device has been evaluated to meet general RF exposure requirement.
The device can be used in portable exposure condition without restriction.

Phomemo Smart Mini Label Maker/Phomemo Smart Mini Label Drucker/Stampante per etichette piccole Phomemo/Imprimante de petites étiquettes Phomemo/Impresora de etiquetas pequeñas Phomemo



12. After-sale support Maintenance Card

☐ Replace

☐ Return

User Information	Name: Gender: Phone:
	Address:
Product Information	Date of purchase:
	Product order number :
	Product serial number:
Reason for Return (Replace / Repair / Request Maintenance)	Fault description:

Thank you for choosing our products!

✉ support@phomemo.com

🌐 www.phomemo.com