

# Differences declaration

To whom concern:

Our company Guangzhou Daxin Health Technology Co.,Ltd

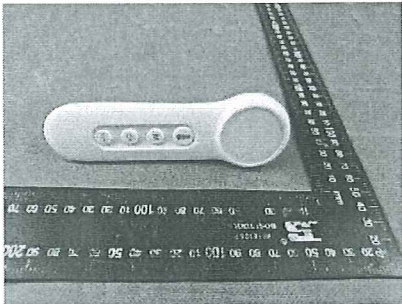
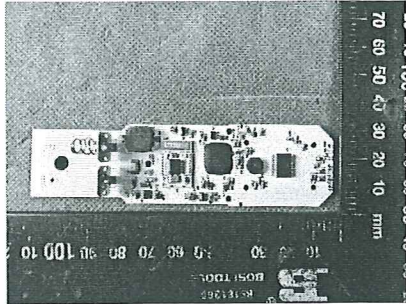
Here by declares:

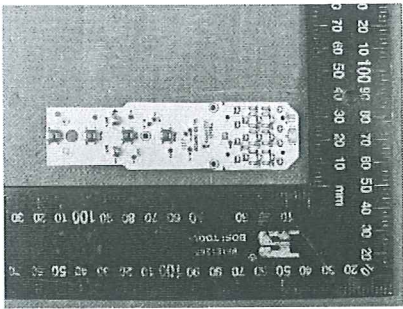
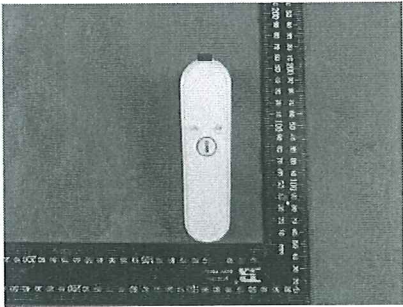
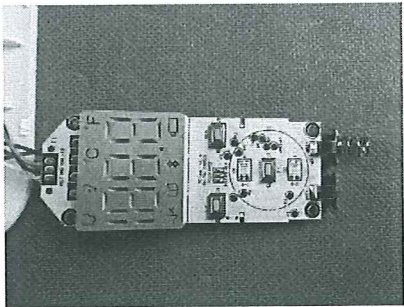
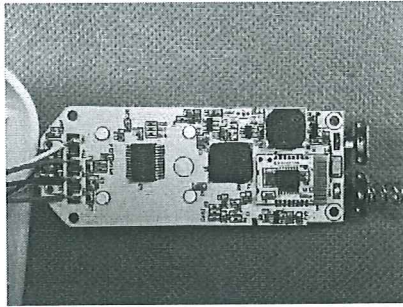
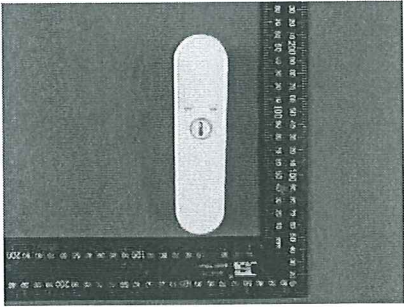
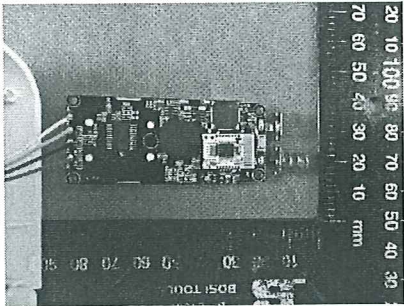
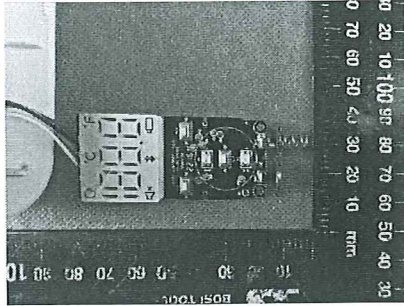
Multi-model differences are as follows:

Main model: Listed model:	Main Model No.: EQ-HW-TH-500-BK(T30)				
	Schematic diagram 电路原理图	PCB layout PCB 走线	Appearance 外观结构	Model name 型号命名	Other 其它
Series Model No.: TE-66	Δ	Δ	Δ	Δ	<input checked="" type="checkbox"/>
Series Model No.: TE-79	Δ	Δ	Δ	Δ	<input checked="" type="checkbox"/>
Series Model No.: TE-91	Δ	Δ	Δ	Δ	<input checked="" type="checkbox"/>
Series Model No.: TE-102	Δ	Δ	Δ	Δ	<input checked="" type="checkbox"/>

Note:

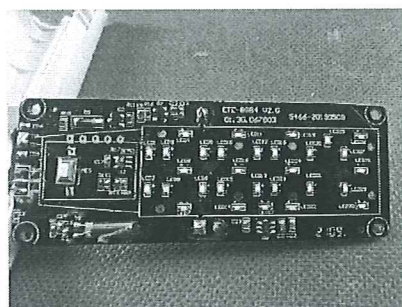
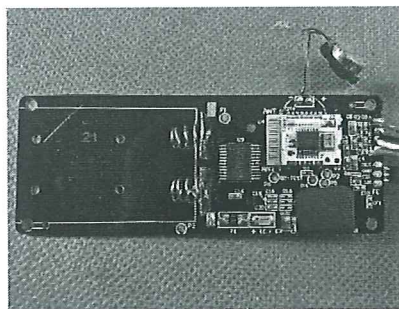
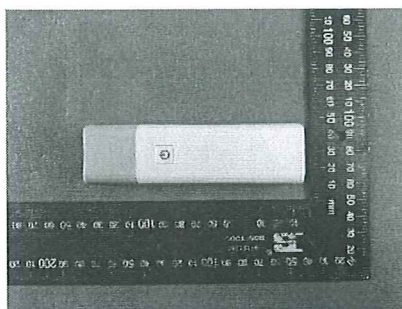
1. If it is a same, mark it as ☒  
如相同，则标识为☒
2. If there is a difference, mark it as Δ; If there are differences other than model name differences, please describe them in detail  
如有差异，则标注为Δ; 除了型号命名差异外，如有其它差异则需要下面详细描述

Model No.:	Differences describe	
Main model no.: EQ-HW-TH-500-BK(T30)		

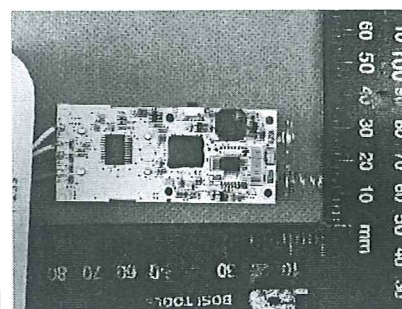
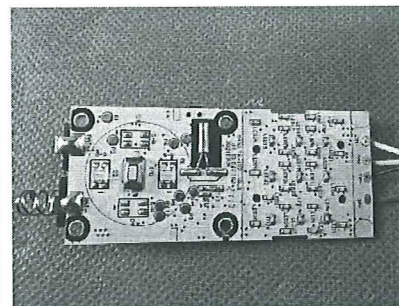
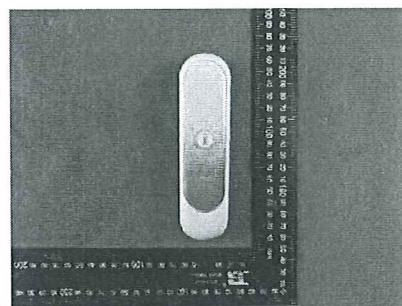
	
Series model no.: TE-66	  
Series model no.: TE-79	  



Series model no.:  
TE-91



Series model no.:  
TE-102



Due to the fact that the schematic diagram and PCB layout of each model are different, but the RF circuits of all models are exactly the same (RF modules), we have added differential testing of the radiation part for each listed model (test data can be found in report CHTEW24010047) to meet the requirement of sharing one FCC ID.

By:

Julie

Julie

Signature

Printed

Title:

-

On behalf of :

Guangzhou Daxin Health Technology Co.,Ltd