



User instruction for led strip light

Thank you for buying this product. To provide an excellent user experience, please install it according to these instructions and ensure that the installation is correct and appropriate for retention and future reference.

Precautions

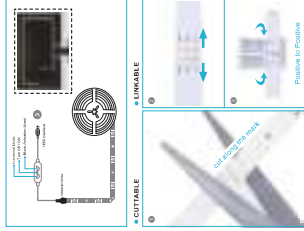
Please make sure the surface is flat, smooth and clean before sliding the strip.
Please do not cut the light strip for over 5s when they are rolled on the plastic axle.
Please check the led strip carefully before installation.
Please do not use the strip for long time in high temperature environment.
The product light belt is waterproof, please pay attention to the voltage when increasing the power supply.

FAQ

1. Can led strip lights stick to any surface?
No, please make sure the surface is flat, smooth and clean before sticking.
2. How many times can the led strip light stick to a new surface?
We recommend sliding led strip light to single surface.
No, our light strips are mainly suitable for indoor environments.
Note that it is contraindicated, they are not waterproof.
No, the led strip light and 5V/10V, they can not be plugged directly into the mains.
Led strip lights will last up to 60000 hours or around 14 years based on 8 hours use per day.
Yes, you can cut led strip lights?

YES, just be sure to cut where clearly marked.

Cutting & Connectors Application:



LED Strip Lights Installation Instructions

1. Prepare all the required accessories before connecting and wiring. If lack something, please make another order of accessories.
2. Turn off the opening of led strip lights.
3. Stick up the adhesive strip onto where you want to use it.
4. Heat the USB cable into the USB interface and note that the voltage is 5V.
Installation is very simple.

LED Strip Lights DIY

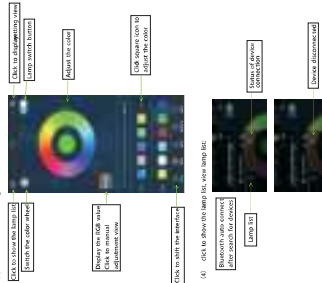
1. Please cut the LED strip through the line marked on it.
2. The 5V low voltage LED strip can be cut in every LEDs.



If you have any question after receiving the products, please contact



(3) switch to color and brightness interface.



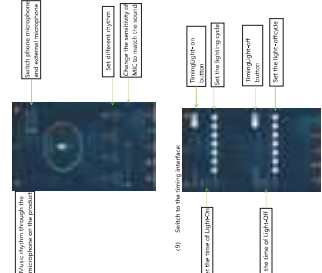
(5) Click to add manual add light mode.



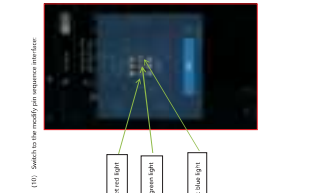
(7) switch to the music rhythm interface.



(9) Switch to the setting interface.



(10) Switch to the model's performance interface.



Instructions for use of led controller

Use the led controller to control the led strip lights. After opening the browser or other tools with "Scan QR code" function scan the QR code as below:

Scan the QR code



App operation

Click the QR code on the led controller app, then enter the app page. After entering the app interface of Bluetooth is not enabled, an application wants to enable the Bluetooth function of this device click allow.



FCC Caution:

This device complies with part 15 of the FCC Rules. Operation is subject to the following two conditions: (1) This device may not cause harmful interference, and (2) this device must accept any interference received, including interference that may cause undesired operation.

Any Changes or modifications not expressly approved by the party responsible for compliance could void the user's authority to operate the equipment.

Note: This equipment has been tested and found to comply with the limits for a Class B digital device, pursuant to part 15 of the FCC Rules. These limits are designed to provide reasonable protection against harmful interference in a residential installation. This equipment generates uses and can radiate radio frequency energy and, if not installed and used in accordance with the instructions, may cause harmful interference to radio communications. However, there is no guarantee that interference will not occur in a particular installation. If this equipment does cause harmful interference to radio or television reception, which can be determined by turning the equipment off and on, the user is encouraged to try to correct the interference by one or more of the following measures:

- Reorient or relocate the receiving antenna.
- Increase the separation between the equipment and receiver.
- Connect the equipment into an outlet on a circuit different from that to which the receiver is connected.
- Consult the dealer or an experienced radio/TV technician for help.

This equipment complies with FCC radiation exposure limits set forth for an uncontrolled environment.