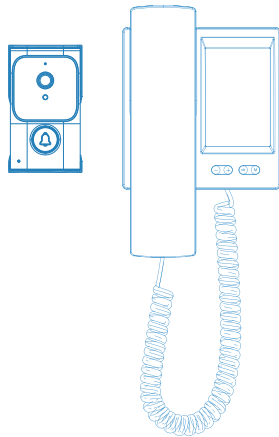


2.4G Wireless Video Doorphone

User Manual V1.0



Contents

1. Specification.....1-3

2. Product Description..... 4-5

3. Connection..... 6

4. Buttons(Symbol) Indroduction..... 7

5. Indoor phone Operation..... 8-9

6. Reference..... 10

1.Specification

Functions	• No WiFi, Privacy Protection	
	• Wireless, One click pairing for easier installation	
	• 3.5-inch IPS screen, full view display and clear	
	• 2.4G private protocol: long distance transmission , stronger signal	
Image	• Restores factory settings when power off	
	• Ultra-low power consumption and ultra long standby time	
	• Indoor unit with Plug DC power, Fast Response	
	• Automatically stores photos, automatic recording while SD cards inserts	
	• Infrared night vision	
	• Supports multiple languages	
	• Indoor unit with 6 musics for choosen	
	• 50 images can be stored for loop coverage	
	• The video can be saved for 15 seconds	
	• With SD card storing videos,no cards just storing pictures	
	• Automatically hangs up in 15 seconds	
	• Video two-way communication	
Audio	sensor	GC0328
	screen	3.5-inch IPS screen
	Viewing angle	35°
	Video Resolution	480*320
Audio	Input	-45±3dB
	Output	-40±3dB
	Two-way communication	Video two-way communication

1

Audio	Compression	/
	Audio from/to	In-built Speaker, in-built Microphone
Video	Compression Standard	MJPEG
	Lighting frequency	/
	Frame Rate	15FPS
	Max Resolution	480*320
	Night vision light source	Infrared
Connection	Wireless Standard	/
	Protocol	2.4G private protocol
	IP address	/
Recording	Recording way	Storing videos with SD card
	Storage	Max 256G SD card
Function	Smart Function	/
	On	Long press OK button
	Alarm notification	/
	Indicator Light	/
	Mechanical Chime or Smart speaker Connection	/
Battery	Capacity	800MA
	Removeable	No

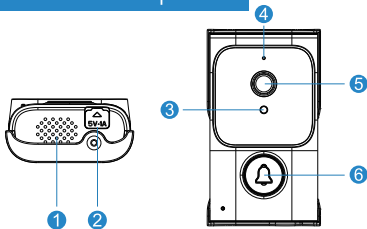
2

Battery	Run life	Outdoor unit- about 5 days if press 10 times per day indoor unit- about 5 days
	Stand-by	/
	Power from	Outdoor unit-in-built Polymer battery 3.7V 800mAh or Type-C, 5V/2A indoor unit: DC12V port
	Charging time	10H
	Protection	/
Power	Stand-by	Outdoor unit-62.3uA Indoor unit-27.75mA
	Day working	Outdoor unit-472mA / indoor unit-423mA
	Night working	Outdoor unit-285-315mA / indoor unit-423mA
Ports	Power	Outdoor unit: DC 5V 2A; indoor unitDC12V
	Storage	Indoor unit TF card socket
	Button	See Product
Installation	Way	/
	Bracket	/
Anti-tamper	Structure	/
	Electronics	/
Operating Environment	Waterproof	IPx4
	Temperature	-10~60°C

3

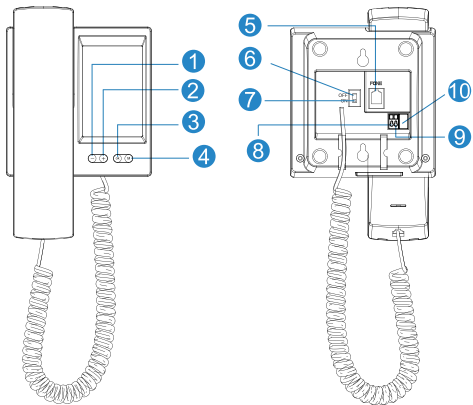
Operating Environment	Humidity	10%-90%
Specification	Size (LxWxH)	Y8U:87.2*50MM KP1:184.31*114.59MM
	Material	ABS
	Color	White
Certification	Certificate	/
Weight	Unit weight	Y8(72g), KP1(280g)
Packing	Screw package*1, Type-C USB cable*1, Manual*1	

2.Product Description:



- 1) Speaker 2) Charging port 3) IR Lamp
- 4) Indicator Light 5) Camera 6) Ring Button

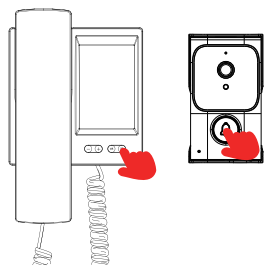
4



- 1) Volume- 2) Volume+
- 3) Power on 4) Menu
- 5) Handset port 6) OFF
- 7) ON 8) POWER PORT 12/24V
- 9) GND 10) RST

5

3.Connection:



1. Turn the switch of indoor unit to "ON", then long press "M" button, the screen will show "connecting.....30", it is pairing mode.
2. Long Press the Ring button of outdoor unit, indicator light will flash.
3. When the indoor monitor displays "Connected... √", it indicates successful pairing.
4. When the visitor rings the doorbell, the indoor unit rings. pick up the handset to Talk with the outdoor unit; hang up the phone to end.

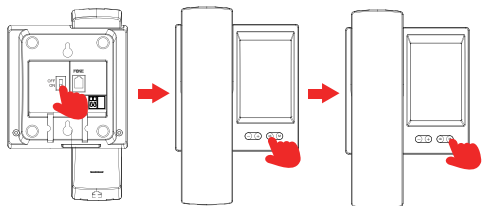
6

4.Buttons(Symbol) Indroduction:

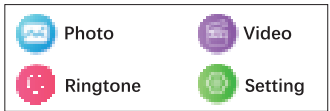
Symbol	Indroduction	Symbol	Indroduction
	Short press-Menu Long press-pairing		Connection Singal
	Hang on Hang up		Volume
	-/page down		Power of outdoor unit
	+/page up		Power of indoor unit
	Photo		Two-way intercom
	Video	未连接	Unpair / unconnection
	Ringtone	连接中....21	Connecting
	Setting	连接中....✓	Connected

7

5.Indoor phone Operation:



1. Turn the switch to "ON", the screen will be on.
2. Long press "OK" wake up the device; press "M" enter menu setting.



8

3. -/▼、+/-▲ to choose
4. "OK" to confirm, "M" to back.
5. If there is no operation in 30 seconds, the display screen will automatically turn off. Press and hold the "OK" for 3 seconds to wake up.
6. Photo: When a visitor presses the doorbell, the camera will automatically capture the visitor's image and store it in the display memory. Note: Up to 50 images, loop coverage, save the latest photos.
7. Recording: This function requires inserting a TF card. ringing the doorbell, and the monitor will automatically turn on recording, loop coverage, save the latest videos.
8. Setting: click enter setting
- a. Language settings: Built in multiple languages for choosen
- b. Display brightness: Adjust the brightness of the screen
- c. Volume setting: Adjust the volume of the speaker
- d. Version information: Display hardware version number
- e. Date/Time setting: Set the display date/time
- f. Format: Clear TF card recording files
9. Date/Time setting

YYYY	MM	DD	hh	mm
2024	06	08	08	08

Press -/▼、+/-▲ to choose; press "OK" to confirm; once adjustment finished, press the "M" to back.

9

6.Reference:

- The device is a low-power product. If no one rings the bell, the device enters standby mode. The indoor unit cannot wake up the outdoor unit.
- Walls, windows, metal doors, etc. may weaken the signal. Please try to install the devicet in a strong signal range.
- Before use, please do the pairing between the outdoor unit and the indoor unit, and make sure install it in the best signal range.
- If the screen is too close to the doorbell, it will cause echoes. Please keep them away or lower the valume.
- This product is suitable for working temperatures ranging from -10 ° C to 60 ° C. Please do not use at temperatures that are too high or too hot. Do not Use in excessively humid environments.
- Kind reminder: indoor unit needs to be connected to an external power for long-term use. The battery is only for temporary use. Do not use for a long time without an external power.

10

FCC Warning

This device complies with part 15 of the FCC rules. Operation is subject to the following two conditions: (1) this device may not cause harmful interference, and (2) this device must accept any inte rference received, including interference that may cause undesired operation.

Changes or modifications not expressly approved by the party responsible for compliance could void the user’s authority to operate the equipment.

NOTE: This equipment has been tested and found to comply with the limits for a Class B digital device, pursuant to part 15 of the FCC Rules. These limits are designed to provide reasonable protection against harmful interference in a residential installation. This equipment generates uses and can radiate radio frequency energy and, if not installed and used in accordance with the instructions, may cause harmful interference to radio communications. However, there is no guarantee that interference will not occur in a particular installation. If this equipment does cause harmful interferenceto radio or television reception, which can be determined by turning the equipment off and on, the user is encouraged to try to correct the interference by one or more of the following measures:

- Reorient or relocate the receiving antenna.
- Increase the separation between the equipment and receiver.
- Connect the equipment into an outlet on a circuit different from that to which the receiver is connected.
- Consult the dealer or an experienced radio/TV technician for help.

Radiation Exposure Statement

The device has been evaluated to meet general RF exposure requirement. The device can be used in portable exposure condition without restriction.