

GRYPHON® **AX**



Getting Started

GRYPHON CONNECT APP TUTORIAL

Create User Profiles	Page 2
Add Devices To Your Network & Assign Them To Users	Page 3
Request Product Support Through The App	Page 3
Additional Gryphon Connect App Features	Page 4

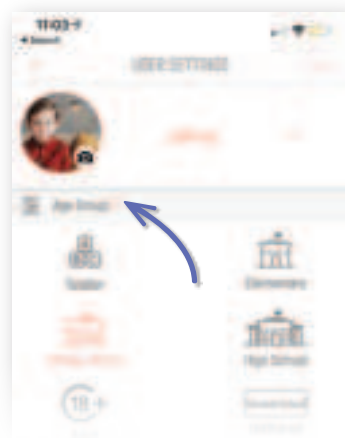


Create User Profiles



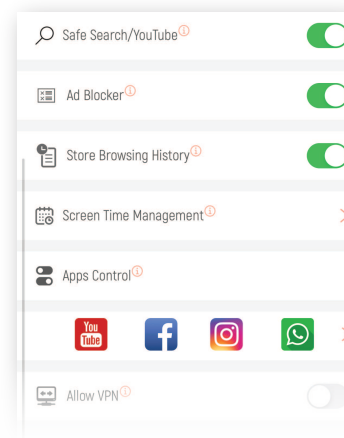
STEP ONE

Click **Users** in the app dashboard. In the **Users** screen, click the **+** add button at top right of the screen.



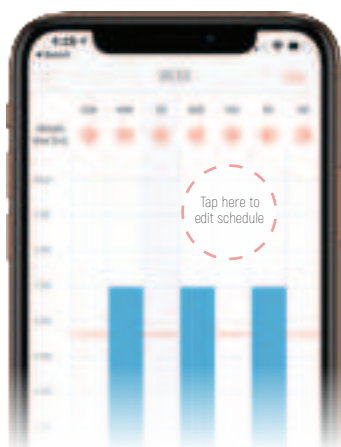
STEP TWO

Enter the user's name and optionally upload their picture. Select user's appropriate age group. You can click on the **More Info** icon to see what categories are blocked for each age group.



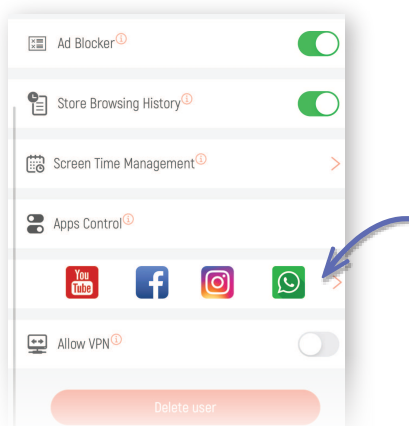
STEP THREE

Choose the other configurations that you want for the child such as Safe Search and Store Browsing history. You can always click on the **More Info** for help with the settings.



STEP FOUR

Tap on **Screen Time Management** to access the **Visual Calendar (Week)**. Click day/time block to create internet schedules and screen time limits for each day.



STEP FIVE - DONE

To manage app usage, click **Apps Control**. This is where you can disable popular apps like TikTok, Instagram, or YouTube during Homework time. When finished, tap on **Save** to save your child's user profile.



PARENTAL CONTROL SYSTEM
Read the *Screen Time Management Guide* for a detailed parental controls tutorial.

<https://gryphonconnect.com/parental-controls>

Add Devices To Your Network & Assign Them To User Profiles



STEP ONE

Connect the device to the Gryphon WiFi network. NOTE: Gryphon's SSID and password can be found by going to Settings > Network > WiFi Settings (in case you forgot).



STEP TWO - DONE

Once connected, a notification will be shown on your app. Tap on the notification and select the device type if not already assigned and select the user profile this device belongs to. Repeat this for all devices.

NOTE: Smart devices such as your web cam will not be assigned to a user profile.



Request Product Support



ACCESS HOW TO VIDEO LIBRARY

To access the Gryphon Connect app library of how-to-videos, go to Settings and click (A) Gryphon how-to-videos.



REQUEST CUSTOMER SUPPORT

Your happiness is very important to us. Let us know how we can help! You can request customer support directly through the Gryphon Connect app. Just go to **Settings** and click **Contact support**.



CONTACT SUPPORT:

Email: support@gryphonconnect.com
Chat: www.gryphonconnect.com/support

Additional Gryphon Connect App Features



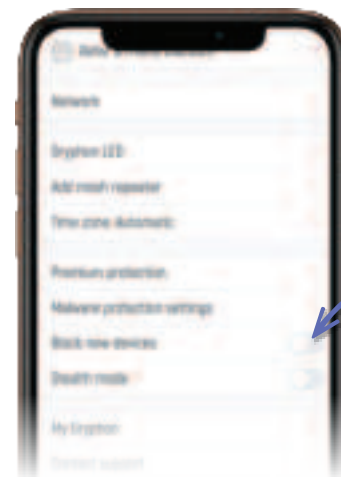
ADD A SECOND ADMIN USER

To add a second admin user to your network, install the Gryphon Connect app on their mobile device, create an account using a different email address than the primary admin account, and then follow instructions to create the secondary account.



FIRMWARE & SECURITY UPDATES

After setting up Gryphon, it may require a firmware update to work better with the installed app. Security updates will happen automatically in the background.



BLOCK NEW DEVICES FROM CONNECTING TO NETWORK

Go to **Settings** and click **Block new devices**.

This will prevent any new device from connecting to the internet until you allow the device to join the network.



TURN OFF GRYPHON LED LIGHT

Go to **Settings** and click **Gryphon LED**. In the next screen, you can setup the schedule for the light to be off at night.



TURN OFF THE WIFI RADIO

Go to **Settings > Network > WiFi settings**. Scroll down and click **WiFi Radio Control** to set a schedule for your WiFi radio to turn off. This will keep your wired connections on, but turns off your WiFi radio for extra security or just to save power and reduce exposure.

Federal Communication Commission Interference Statement

This device complies with Part 15 of the FCC Rules. Operation is subject to the following two conditions: (1) This device may not cause harmful interference, and (2) this device must accept any interference received, including interference that may cause undesired operation.

This equipment has been tested and found to comply with the limits for a Class B digital device, pursuant to Part 15 of the FCC Rules. These limits are designed to provide reasonable protection against harmful interference in a residential installation. This equipment generates, uses and can radiate radio frequency energy and, if not installed and used in accordance with the instructions, may cause harmful interference to radio communications. However, there is no guarantee that interference will not occur in a particular installation. If this equipment does cause harmful interference to radio or television reception, which can be determined by turning the equipment off and on, the user is encouraged to try to correct the interference by one of the following measures:

- o Reorient or relocate the receiving antenna.
- o Increase the separation between the equipment and receiver.
- o Connect the equipment into an outlet on a circuit different from that to which the receiver is connected.
- o Consult the dealer or an experienced radio/TV technician for help.

FCC Caution: Any changes or modifications not expressly approved by the party responsible for compliance could void the user's authority to operate this equipment.

This transmitter must not be co-located or operating in conjunction with any other antenna or transmitter.

This device is restricted for indoor use.

FOR MOBILE DEVICE USAGE (>20cm/low power) Radiation Exposure Statement:

This equipment complies with FCC radiation exposure limits set forth for an uncontrolled environment. This equipment should be installed and operated with minimum distance 23cm between the radiator & your body.

For product available in the USA/Canada market, only channel 1-11 can be operated. Selection of other channels is not possible.