

EXHIBIT 4: FCC ID LABEL SAMPLE AND LOCATION INFORMATION

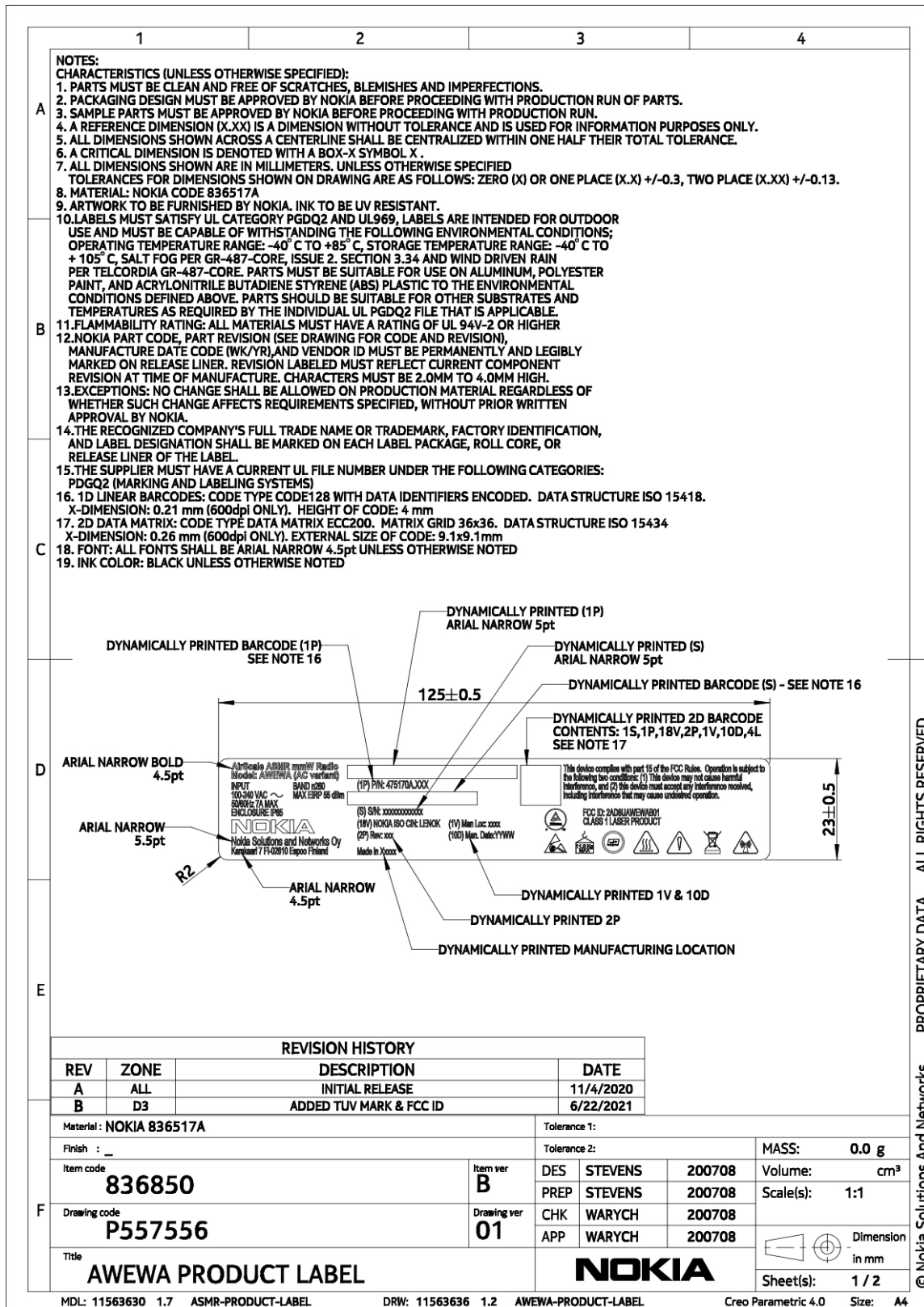
SECTION 2.1033(c) (11) also SECTION 2.925 (a) (1)

A photograph or drawing of the equipment identification plate or label showing the information to be placed thereon.

Response:

The drawing of the equipment identification labels to be placed on the **Nokia AWEWA/B 5G AirScale 39 GHz mmWave Radio, FCC ID: 2AD8UAWEWAB01** are below. A drawing showing label location and drawings of the equipment identification label is attached.

FCC Label Drawings for Nokia AWEUC 5G AirScale 39 GHz mmWave Radio, FCC ID: 2AD8UAWEWAB01 - AWEUC Base Unit



**FCC Label Drawings for Nokia AWEUD 5G AirScale 39 GHz mmWave Radio,
FCC ID: 2AD8UAWEWAB01 - AWEUD Base Unit**

1	2	3	4																																
NOTES:																																			
CHARACTERISTICS (UNLESS OTHERWISE SPECIFIED):																																			
1. PARTS MUST BE CLEAN AND FREE OF SCRATCHES, BLEMISHES AND IMPERFECTIONS.																																			
2. PACKAGING DESIGN MUST BE APPROVED BY NOKIA BEFORE PROCEEDING WITH PRODUCTION RUN OF PARTS.																																			
3. SAMPLE PARTS MUST BE APPROVED BY NOKIA BEFORE PROCEEDING WITH PRODUCTION RUN.																																			
4. A REFERENCE DIMENSION (X.XX) IS A DIMENSION WITHOUT TOLERANCE AND IS USED FOR INFORMATION PURPOSES ONLY.																																			
5. ALL DIMENSIONS SHOWN ACROSS A CENTERLINE SHALL BE CENTRALIZED WITHIN ONE HALF THEIR TOTAL TOLERANCE.																																			
6. A CRITICAL DIMENSION IS DENOTED WITH A BOX-X SYMBOL X.																																			
7. ALL DIMENSIONS SHOWN ARE IN MILLIMETERS. UNLESS OTHERWISE SPECIFIED																																			
TOLERANCES FOR DIMENSIONS SHOWN ON DRAWING ARE AS FOLLOWS: ZERO (X) OR ONE PLACE (X.X) +/-0.3, TWO PLACE (X.XX) +/-0.13.																																			
8. MATERIAL: NOKIA CODE 836517A																																			
9. ARTWORK TO BE FURNISHED BY NOKIA. INK TO BE UV RESISTANT.																																			
10. LABELS MUST SATISFY UL CATEGORY PGDQ2 AND UL969, LABELS ARE INTENDED FOR OUTDOOR USE AND MUST BE CAPABLE OF WITHSTANDING THE FOLLOWING ENVIRONMENTAL CONDITIONS; OPERATING TEMPERATURE RANGE: -40° C TO +85° C, STORAGE TEMPERATURE RANGE: -40° C TO +105° C, SALT FOG PER GR-487-CORE, ISSUE 2. SECTION 3.34 AND WIND DRIVEN RAIN PER TELCORDIA GR-487-CORE. PARTS MUST BE SUITABLE FOR USE ON ALUMINUM, POLYESTER PAINT, AND ACRYLONITRILE BUTADIENE STYRENE (ABS) PLASTIC TO THE ENVIRONMENTAL CONDITIONS DEFINED ABOVE. PARTS SHOULD BE SUITABLE FOR OTHER SUBSTRATES AND TEMPERATURES AS REQUIRED BY THE INDIVIDUAL UL PGDQ2 FILE THAT IS APPLICABLE.																																			
11. FLAMMABILITY RATING: ALL MATERIALS MUST HAVE A RATING OF UL 94V-2 OR HIGHER																																			
12. NOKIA PART CODE, PART REVISION (SEE DRAWING FOR CODE AND REVISION), MANUFACTURE DATE CODE (WK/YR) AND VENDOR ID MUST BE PERMANENTLY AND LEGIBLY MARKED ON RELEASE LINER. REVISION LABELED MUST REFLECT CURRENT COMPONENT REVISION AT TIME OF MANUFACTURE. CHARACTERS MUST BE 2.0MM TO 4.0MM HIGH.																																			
13. EXCEPTIONS: NO CHANGE SHALL BE ALLOWED ON PRODUCTION MATERIAL REGARDLESS OF WHETHER SUCH CHANGE AFFECTS REQUIREMENTS SPECIFIED, WITHOUT PRIOR WRITTEN APPROVAL BY NOKIA.																																			
14. THE RECOGNIZED COMPANY'S FULL TRADE NAME OR TRADEMARK, FACTORY IDENTIFICATION, AND LABEL DESIGNATION SHALL BE MARKED ON EACH LABEL PACKAGE, ROLL CORE, OR RELEASE LINER OF THE LABEL.																																			
15. THE SUPPLIER MUST HAVE A CURRENT UL FILE NUMBER UNDER THE FOLLOWING CATEGORIES: PDGQ2 (MARKING AND LABELING SYSTEMS)																																			
16. 1D LINEAR BARCODES: CODE TYPE CODE128 WITH DATA IDENTIFIERS ENCODED. DATA STRUCTURE ISO 15418. X-DIMENSION: 0.21 mm (600dpi ONLY). HEIGHT OF CODE: 4 mm																																			
17. 2D DATA MATRIX: CODE TYPE DATA MATRIX ECC200. MATRIX GRID 36x36. DATA STRUCTURE ISO 15434 X-DIMENSION: 0.26 mm (600dpi ONLY). EXTERNAL SIZE OF CODE: 9.1x9.1mm																																			
18. FONT: ALL FONTS SHALL BE ARIAL NARROW 4.5pt UNLESS OTHERWISE NOTED																																			
19. INK COLOR: BLACK UNLESS OTHERWISE NOTED																																			
<p>The drawing shows a rectangular label with various markings and dimensions. Key features include: - Top left: "DYNAMICALLY PRINTED BARCODE (1P) SEE NOTE 16" - Top center: "DYNAMICALLY PRINTED (1P) ARIAL NARROW 5pt" - Top right: "DYNAMICALLY PRINTED (S) ARIAL NARROW 5pt" - Right side: "DYNAMICALLY PRINTED BARCODE (S) - SEE NOTE 16" - Center: "DYNAMICALLY PRINTED 2D BARCODE CONTENTS: 1S,1P,18V,2P,1V,10D,4L SEE NOTE 17" - Bottom left: "DYNAMICALLY PRINTED 1V & 10D" - Bottom center: "DYNAMICALLY PRINTED 2P" - Bottom right: "DYNAMICALLY PRINTED MANUFACTURING LOCATION" - Dimensions: Overall width 125±0.5, overall height 23±0.5, barcode height 4.5pt, font size 5.5pt, and a radius R2 at the bottom left corner.</p>																																			
<table border="1" style="width:100%; border-collapse: collapse;"> <caption>REVISION HISTORY</caption> <thead> <tr> <th>REV</th> <th>ZONE</th> <th>DESCRIPTION</th> <th>DATE</th> </tr> </thead> <tbody> <tr> <td>A</td> <td>ALL</td> <td>INITIAL RELEASE</td> <td>11/4/2020</td> </tr> <tr> <td>B</td> <td>D3</td> <td>ADDED TUV MARK & FCC ID</td> <td>6/22/2021</td> </tr> </tbody> </table>				REV	ZONE	DESCRIPTION	DATE	A	ALL	INITIAL RELEASE	11/4/2020	B	D3	ADDED TUV MARK & FCC ID	6/22/2021																				
REV	ZONE	DESCRIPTION	DATE																																
A	ALL	INITIAL RELEASE	11/4/2020																																
B	D3	ADDED TUV MARK & FCC ID	6/22/2021																																
<table border="1" style="width:100%; border-collapse: collapse;"> <tr> <td colspan="2">Material : NOKIA 836517A</td> <td colspan="2">Tolerance 1:</td> </tr> <tr> <td>Finish : _</td> <td></td> <td>Tolerance 2:</td> <td>MASS: 0.0 g</td> </tr> <tr> <td>Item code</td> <td></td> <td>DES STEVENS 200708</td> <td>VOLUME: cm³</td> </tr> <tr> <td>836851</td> <td>Item ver B</td> <td>PREP STEVENS 200708</td> <td>Scale(s): 1:1</td> </tr> <tr> <td>Drawing code</td> <td></td> <td>CHK WARYCH 200708</td> <td></td> </tr> <tr> <td>P557557</td> <td>Drawing ver 01</td> <td>APP WARYCH 200708</td> <td></td> </tr> <tr> <td>Title</td> <td colspan="2"></td> <td>Dimension in mm</td> </tr> <tr> <td>AWEWB PRODUCT LABEL</td> <td colspan="2">NOKIA</td> <td>Sheet(s): 1 / 2</td> </tr> </table>				Material : NOKIA 836517A		Tolerance 1:		Finish : _		Tolerance 2:	MASS: 0.0 g	Item code		DES STEVENS 200708	VOLUME: cm³	836851	Item ver B	PREP STEVENS 200708	Scale(s): 1:1	Drawing code		CHK WARYCH 200708		P557557	Drawing ver 01	APP WARYCH 200708		Title			Dimension in mm	AWEWB PRODUCT LABEL	NOKIA		Sheet(s): 1 / 2
Material : NOKIA 836517A		Tolerance 1:																																	
Finish : _		Tolerance 2:	MASS: 0.0 g																																
Item code		DES STEVENS 200708	VOLUME: cm³																																
836851	Item ver B	PREP STEVENS 200708	Scale(s): 1:1																																
Drawing code		CHK WARYCH 200708																																	
P557557	Drawing ver 01	APP WARYCH 200708																																	
Title			Dimension in mm																																
AWEWB PRODUCT LABEL	NOKIA		Sheet(s): 1 / 2																																

Equipment Identification Label Location (Equipment Left Side):

AWEWA/B Base Unit



Left Side of Base Radio Unit

Label Location