

The Portable Inventory Wand



User Manual

Table of Contents

1. THE ILS INVENTORY WAND.....	4
1.1. OVERVIEW	4
1.2. POWERING UP THE INVENTORY WAND.....	4
1.3. POWERING UP AND CHARGING THE PPT 2700	5
1.3.1. <i>Powering Up</i>	5
1.3.2. <i>Charging the Device</i>	5
1.3.3. <i>Charging the Spare Battery</i>	6
1.3.4. <i>Using the PPT 2700</i>	7
1.3.5. <i>Check on the Status of the Batteries</i>	7
1.4. COLLECTING INVENTORY DATA AND SCANNING LIBRARY MATERIALS	8
1.5. TRANSFERRING THE INVENTORY DATA COLLECTED.....	11
1.6. SEARCHING THE INVENTORY	12
1.6.1. <i>Preparing a Search List File</i>	12
1.6.2. <i>Search Mode Screen</i>	13
1.7. SHELF ORDER SEARCH	15
1.7.1. <i>Selecting a Shelf Order Search File</i>	16
1.7.2. <i>Shelf Order Search Screen</i>	16
1.7.3. <i>Shelf Order Alert</i>	17
1.7.4. <i>Shelf Order Results</i>	19
1.8. WIRELESS OPERATIONS.....	21
1.9. HINTS ON USING THE PPT 2700	22

Table of Figures

FIGURE 1-1: INVENTORY WAND.....	4
FIGURE 1-2: POWERING UP THE PPT 2700.....	5
FIGURE 1-3: CHARGING THE PPT 2700.....	6
FIGURE 1-4: DOCKING THE PPT 2700.....	6
FIGURE 1-5: CHARGING THE SPARE BATTERY.....	7
FIGURE 1-6: SETTINGS PANEL.....	7
FIGURE 1-7: BATTERY STATUS.....	8
FIGURE 1-8: CONNECTING CABLE TO PPT 2700.....	8
FIGURE 1-9: TURNING PPT 2700 ON.....	9
FIGURE 1-10: ILS INVENTORY MAIN SCREEN.....	9
FIGURE 1-11: INVENTORY COLLECTION.....	10
FIGURE 1-12: INVENTORY COLLECTION IN PROGRESS.....	11
FIGURE 1-13: INVENTORY WAND OPERATIONS.....	12
FIGURE 1-14: SELECT THE SEARCH LIST FILE SCREEN.....	13
FIGURE 1-15: ITEM SEARCH SCREEN.....	14
FIGURE 1-16: ITEM FOUND ALERT.....	15
FIGURE 1-17: SELECT THE SHELF ORDER FILE.....	16
FIGURE 1-18: SHELF ORDER SEARCH SCREEN.....	17
FIGURE 1-19: SHELF ORDER ALERT – NOT IN LIST.....	18
FIGURE 1-20: SHELF ORDER ALERT – OUT OF RANGE.....	19
FIGURE 1-21: SHELF ORDER RESULTS SCREEN.....	20
FIGURE 1-22: SHELF ORDER VIEW LIST SCREEN.....	20
FIGURE 1-23: WIRELESS PPT 2700 ILS INVENTORY MAIN SCREEN.....	21
FIGURE 1-24: WIRELESS FILE TRANSFER SCREEN.....	22
FIGURE 1-25: RUNNING PROGRAMS.....	23

1. The ILS Inventory Wand

1.1. Overview

The Intelligent Library System (ILS) Inventory Wand is a key component in Checkpoint's family of ILS products. Consisting of a lightweight, handheld sensing unit, the Inventory Wand combines convenience with versatility. An extendable handle makes it easy to read items placed in hard-to-reach areas, while the sophisticated antenna design and electronics make the Inventory Wand the longest-range portable reader available. This feature is exceptional when checking inventory or trying to locate materials that haven't been shelved properly.

The ILS Inventory Wand is designed with ease of use in mind. The handheld antenna contains three LED's: the green light indicates power "on", the red light alerts the user that a Circulation Circuit is being read, and the yellow one indicates a low battery.

The ILS Inventory Wand enables a fast, efficient and accurate method for taking inventory of the library material.

The Portable Data Terminal (PPT 2700) enables data to be uploaded or downloaded from the ILS Application Server, providing both inventory and search capability.



Figure 1-1: Inventory Wand

1.2. Powering Up the Inventory Wand

Prior to using the Inventory Wand for any significant inventory collection or inventory search session it is imperative that its battery is fully charged. Connect the battery to the battery charger and plug the adapter into an outlet to begin charging. The estimated charging time is 4-6 hours.

When the battery is completely charged, connect the Inventory Wand battery to the top of the Inventory Wand. Once you have started using the Inventory Collection or the Search Inventory programs, the Inventory Wand will be powered up.

1.3. Powering Up and Charging the PPT 2700

1.3.1. Powering Up

Press the power button on the lower left-hand side of the terminal to turn the PPT 2700 on and off.

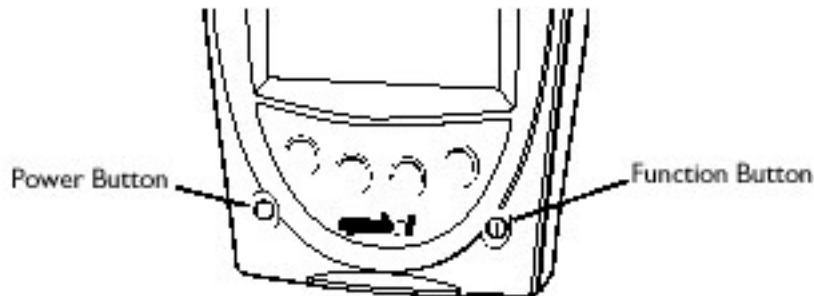


Figure 1-2: Powering Up the PPT 2700

Note: If you have not used the PPT 2700 within the configured time, the device will go into Power Save mode. This means that the device will power down. To turn it on press the red power button. You will be returned to the last screen presented prior to shut off.

1.3.2. Charging the Device

Before using your terminal for the first time, charge the battery. Also, when battery voltage is low, a warning message appears indicating the battery needs to be charged. You can charge the battery using the CRD 2700 cradle. Your terminal is equipped with a memory backup battery that automatically charges from the main lithium-ion battery. This backup battery retains data in memory when the terminal's battery is removed, and takes several hours to charge when you first use your terminal.

Note: If you remove your lithium-ion battery before the backup battery is fully charged, data may be lost. For this reason DO NOT remove the battery within the first ten hours of use.

Using the Cradle to Charge the Battery

To charge the terminal's battery using the cradle:

1. Connect the power supply to the power port on the back of the cradle, and the other end of the power supply to a wall outlet.

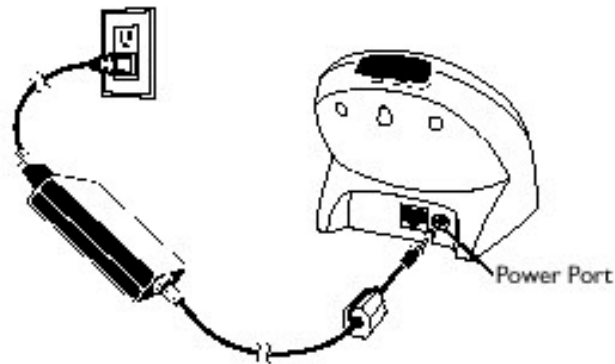


Figure 1-3: Charging the PPT 2700

2. Insert the PPT 2700 terminal in the cradle.



Figure 1-4: Docking the PPT 2700

3. The Terminal Charge LED turns red to indicate charging, then green when the battery is fully charged. The terminal's battery is fully charged after approximately 2 1/2 hours.

1.3.3. Charging the Spare Battery

To charge a spare battery, insert the battery in the spare battery-charging slot in the back of the cradle, oriented so the contacts are facing down and towards the back of the cradle. Press the battery down into the slot until firmly seated.

The Spare Battery Charge LED turns red to indicate charging, then green when the battery is fully charged. The battery is fully charged after approximately 2 1/2 hours.

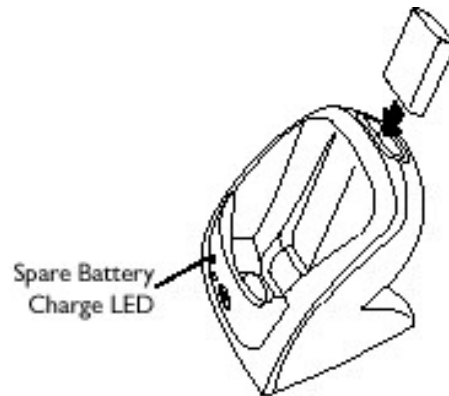


Figure 1-5: Charging the Spare Battery

1.3.4. Using the PPT 2700

In this section the word tap is used instead of click because the stylus supplied must be used to tap the touch screen. The stylus is stored in a silo on the back of the PPT 2700. Please refer to the Symbol "PPT 2700 Series Quick Reference Guide" for information regarding use of this device.

1.3.5. Check on the Status of the Batteries

It may become necessary to check the status of the PPT 2700's battery power. To check the power status of the battery:

1. Tap the Windows icon in the upper left hand corner of the screen.
2. Tap on the Settings menu item.
3. Tap on the System tab at the bottom of the screen.



Figure 1-6: Settings Panel

4. Tap on the Power icon on this screen. This will show you the power status of both the main and the backup batteries. A warning will appear when either battery is low.

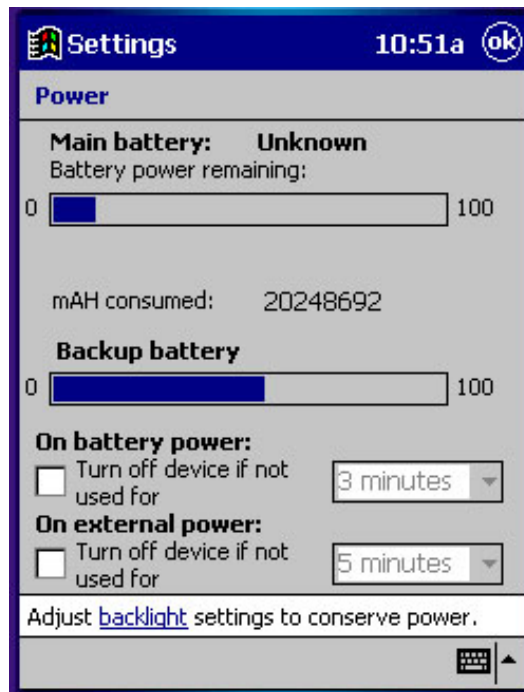


Figure 1-7: Battery Status

1.4. Collecting Inventory Data and Scanning Library Materials

Now that the Inventory Wand has been initialized you are ready to start collecting inventory information.

1. Connect the cable from the Inventory Wand to the PPT 2700.



Figure 1-8: Connecting Cable to PPT 2700

2. Turn the PPT 2700 on. To do this, press the red button in the lower-left hand corner of the device.

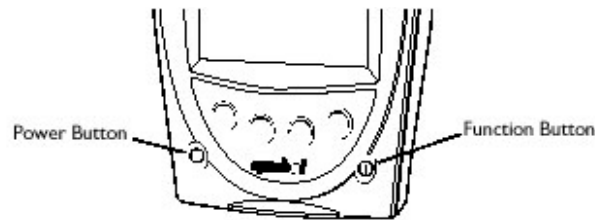


Figure 1-9: Turning PPT 2700 On

3. Once you have started the PPT 2700, you will be presented with the ILS Inventory Main Menu Screen.



Figure 1-10: ILS Inventory Main Screen

Note: If you are not presented with this screen, tap the start button in the upper-left hand corner of the screen. Tap on the "ILS Inventory" menu item provided in the start menu. This will launch the program needed to collect and search the inventory.

4. Tap on the Inventory Collection button located in the center of the screen.
5. Tap the Start button located in the bottom-left hand corner of the screen. If a previous inventory collection file was not transferred to the ILS Server, you will be asked if you want to append to the file. Answering Yes will continue the previous inventory collection, and new items being appended to the file. If you answer No, you will be asked to confirm that you do not wish to keep the existing data. Tap OK if you are sure, and a new inventory file will be created. Tap Cancel and you will append to the file. If you wanted to transfer the previous file, you can immediately tap done to initiate a file transfer.



Figure 1-11: Inventory Collection

6. Begin to scan the tagged items. Hold the wand in your hand about three inches from the material you wish to scan. Notice that the red light on the wand is now blinking. This indicates that the wand is detecting tagged materials. The wand can detect circulation circuits up to a distance of 8 inches. Therefore it is important to keep the wand focused on the intended inventory items to avoid unwanted data from being collected.

You will notice that once you have scanned a tag, the bar code number for that tag will appear on the PPT 2700 in the "Most Recently Scanned Items" field. The "Items Read" field will supply you with the total number of inventory tags read over time. The "Available Memory" field will supply you with the percentage of memory still available.

7. Once you have completed scanning all of the desired tags, tap the DONE button.

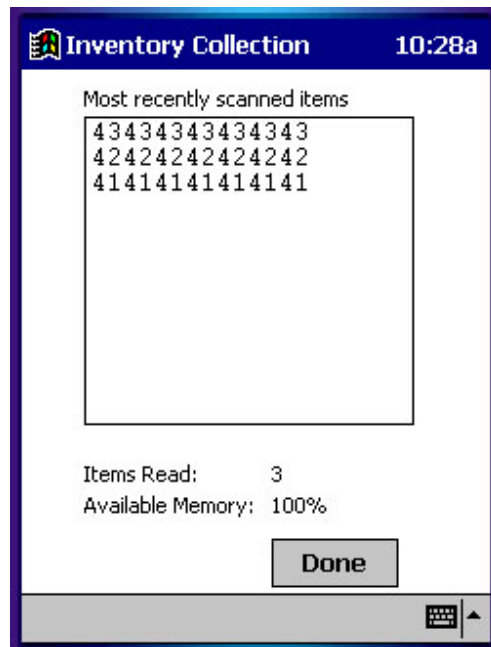


Figure 1-12: Inventory Collection In Progress

1.5. Transferring the Inventory Data Collected

Once you have completed scanning the tags, you are ready to transfer the data.

1. A pop up screen will appear asking you if you want to transfer the data collected. Tap the OK button to do so.

Note: If you wish to continue the inventory collection progress after you have pressed Done, then press Cancel to prevent file transfer and reenter inventory collection mode.

2. (Batch Mode only) Unplug the cable from the bottom of the PPT 2700.
3. (Batch Mode only) Dock the PPT 2700 into the cradle.
4. A Transferring... screen will appear on the PPT 2700 while data is transferring to the ILS Application Server.
5. Once the transfer is completed, the ILS Application Server will display the Inventory Wand Operations window. At this time the inventory you transferred is converted to a text file containing the list of barcodes. The file name and location will be displayed in the Transfer Status Display window. The file is now ready to be transferred to the circulation system. When the process is finished click the <Close> button.

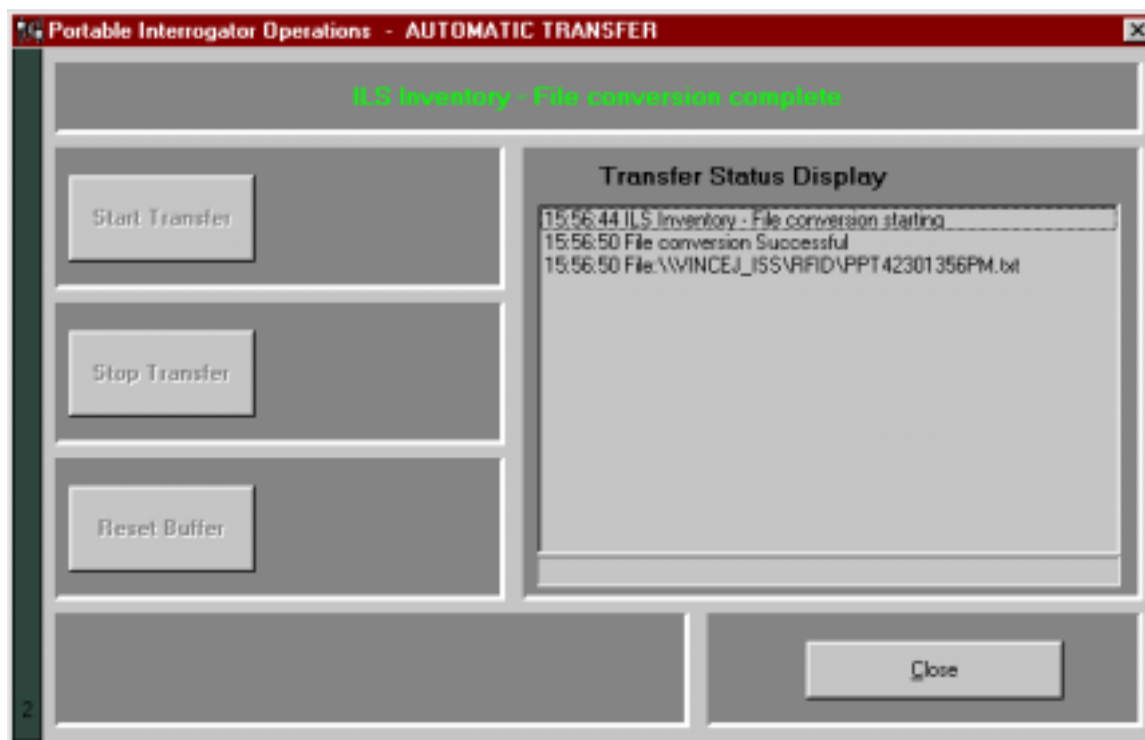


Figure 1-13: Inventory Wand Operations

6. The PPT 2700 will read "Transfer Complete". Tap the OK button. This will return you to the ILS Inventory Main Screen. You may begin another inventory collection by selecting Start, or exit to the main screen by clicking the ok button found at the top-right of the screen.

1.6. Searching the Inventory

To begin searching the inventory, tap the <Item Search> button located in the bottom right hand corner of the ILS Inventory Main Screen. An Item Search file must be prepared on the ILS Application Server.

1.6.1. Preparing a Search List File

An Item Search List file is identified by the ".psl" file extension. The file can be created from the results of other search operations, or may be transferred from the ILS Application Server to the PPT 2700. The file may be created by a report on the circulation system, or simply by using Notepad to enter barcodes.

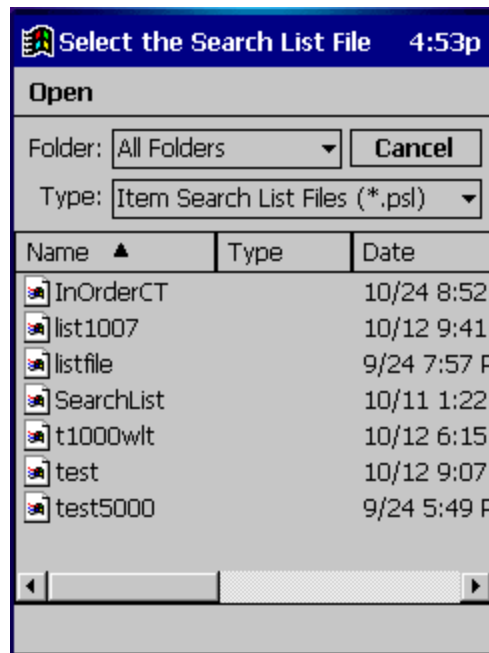


Figure 1-14: Select the Search List File Screen

Transferring and Selecting the Search List File

1. To transfer a search list file (or files) from the ILS Application Server, it must be placed in the synchronization directory for your PPT 2700. There should be a shortcut to this directory on the desktop of the Application Server. Once the file is in the correct location, dock the PPT 2700 and the file(s) will be automatically transferred. Refer to the Wireless Operations sections for details of file transfer using a Wireless PPT 2700.
2. Once the files have been transferred, tap the <Item Search> button. The Select the Search List File screen is used to choose the desired file. The down arrow to the right of the Type field can be used to choose files of other types that can be used as search lists. Tap the file name to select it to be used for the search. The <Cancel> button at the top-right can be used to return to the main screen.

1.6.2. Search Mode Screen

There are several ways to view information on the Search Mode Screen.

Option 1 - Check the Items Found button: This will show you all of the barcodes that were found in the field below.

Option 2 - Check the Items Not Found button: This will show you all of the barcodes that the system has not yet found.

Option 3 - Check the Show All Items button: This will show you both the Items Found and the Items Not Yet Found. This is the default selection. Tap the other buttons at any time to change the view.

When the Alerts enabled button is checked, an alert display and sound will occur for each item that is found. The search will stop temporarily, allowing you to locate the item found on the shelf. Tap this button to disable this feature.

Tap the Start button to begin searching for the barcodes. You will notice that the barcode display field(s) will begin to reflect changes in the status of the search items, depending on

the search option you chose. "Items found" will be listed as you find them. "Items not found" will be removed from the list as you find them.

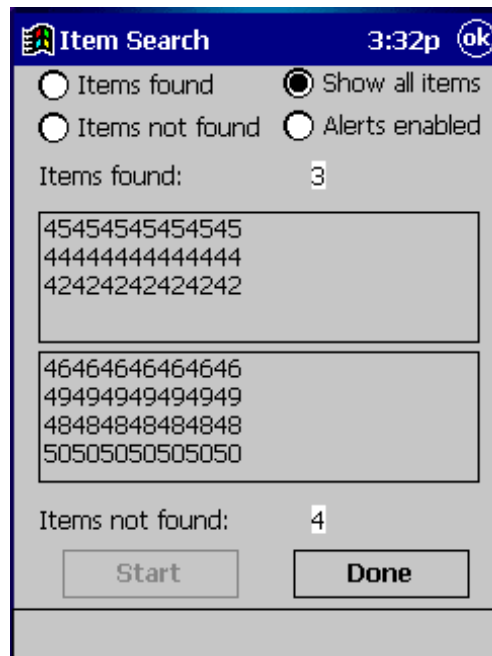


Figure 1-15: Item Search Screen

Begin to scan the inventory items. Hold the wand in your hand about three inches from the material you wish to scan. Notice that the red light on the wand is now on. This indicates that the wand is detecting tagged materials. The wand can detect circulation circuits up to a distance of 8 inches. Therefore it is important to keep the wand focused on the intended inventory items to avoid unwanted data from being collected.

Note: While the red light may flash when the scanner detects any tag, a barcode will only appear in the "Items found" list if it matches an item present in your Search Items list.

When an alert is displayed, the barcode, shelf location, and title of the item will be displayed. Tap the <Continue> button to resume the search.

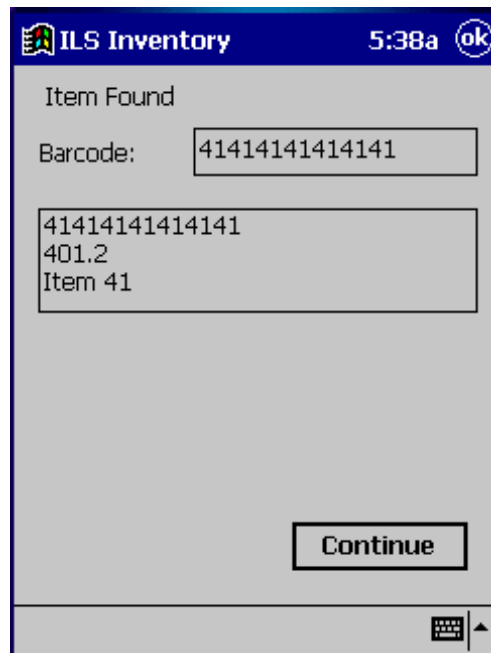


Figure 1-16: Item Found Alert

When you are finished searching tap the <Done> button at the bottom of the screen. If all of the items are found, an alert screen will notify you. Tap the Ok button to continue. At this time, the Item Search result files will be generated. A pop-up will appear asking you to "Please dock the PPT 2700 unit and press OK to begin transfer of the Search Results file". Tap the OK button. (Note: In Wireless mode the file transfer is automatic.)

Note: If you would like to abort the file transfer, tap the Cancel button on this pop up. You will then be back at the Item Search screen.

The Search Results file will be transferred to the configured directory on the ILS Application Server. Refer to section 1.5 Transferring the Inventory Data Collected for details. This file will list all of the barcodes searched. If a barcode was found, the date and time of the search will be listed. If the barcode was not found, the date and time will not be listed.

Two additional files will also be created to list the items found and the items not found. The items found file will have the file extension ".psf". The items not found file will have the file extension ".psm". The filename of the item search list file will be used, with the appropriate file extension added. These files may be used to perform another search, or may be processed as results of the search on the circulation system.

1.7. Shelf Order Search

The Shelf Order search may be used to verify the contents of a shelf against a shelf order list generated by the circulation system. Items scanned will be compared to the shelf order list to determine if they are "in order", "not in the list", or "not found". This allows for verification and sorting of the shelf contents. This is another method available for performing inventory. To begin a Shelf Order search, tap the <Shelf Order> button located at the bottom-left of the ILS Inventory Main Screen.

1.7.1. Selecting a Shelf Order Search File

An Shelf Order Search file is identified by the “.pso” file extension. The file can be transferred from the ILS Application Server to the PPT 2700. The file can be created by a running a Shelf Order report on the circulation system.

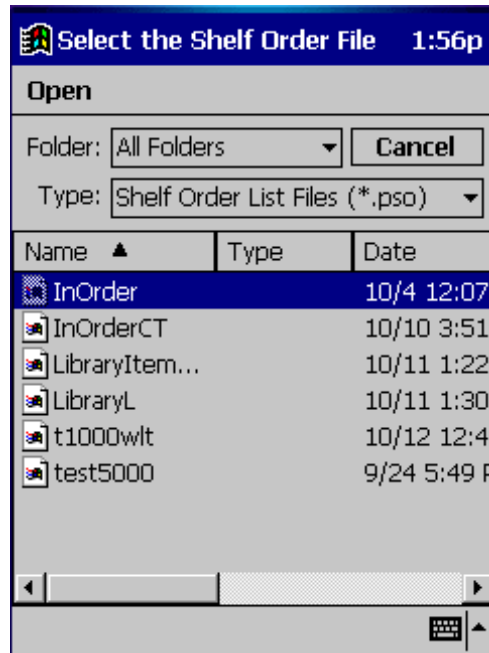


Figure 1-17: Select the Shelf Order File

Transferring and Selecting the Shelf Order File

1. To transfer a shelf order file (or files) from the ILS Application Server, it must be placed in the synchronization directory for your PPT 2700. There should be a shortcut to this directory on the desktop of the Application Server. Once the file is in the correct location, dock the PPT 2700 and the file(s) will be automatically transferred. Refer to the Wireless Operations sections for details of file transfer using a Wireless PPT 2700.
2. Once the files have been transferred, tap the <Shelf Order> button. The Select the Shelf Order File screen is used to choose the desired file. The down arrow to the right of the Type field can be used to choose files of other types that can be used as shelf order lists. Tap the file name to select it to be used for the search. The <Cancel> button at the top-right can be used to return to the main screen.

1.7.2. Shelf Order Search Screen

The Shelf Order Search screen has an Alerts Enabled button. When this button is checked, an alert display and sound will occur for items of interest. Tap this button to disable alerts. Alerts will occur for the following reasons:

1. Out of range – the item read was found in the Shelf Order list, but was not located close enough to the last item in the shelf order.
2. Not in list – the item read was not found in the Shelf Order list.

The Offset in use display indicates the current setting for the offset used to determine when an item is considered to be in shelf order. An offset is needed because the wand can read items in a “random” order within its read range. The offset may be adjusted by changing the

number and tapping the <Set> button. This allows for adjustment when items of different thickness are being scanned.

Tap the Start button to begin the Shelf Order Search. You must begin reading items at the starting shelf location in the list.

The Shelf Order Search screen displays the following information:

1. Items in file – the original count of the items read from the Shelf Order file.
2. Items Read – the number of items read during the search.
3. Items in order – the number of items that were read in shelf order.
4. Items not in order – the number of items that were read that are not in shelf order.

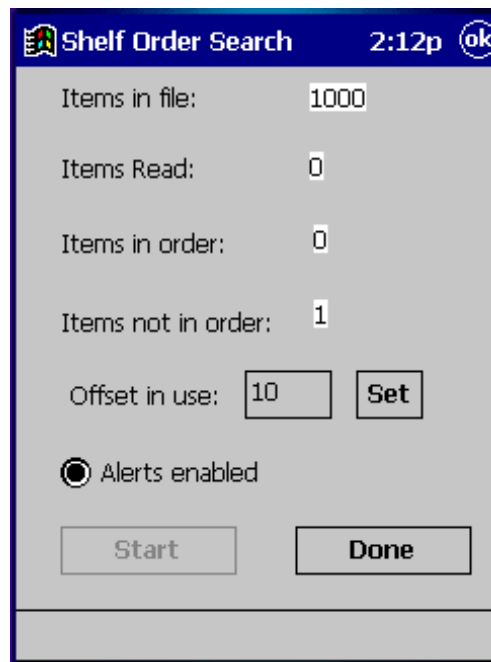


Figure 1-18: Shelf Order Search Screen

The Offset in use and the Alerts enabled settings may be changed at any time during the search.

When you are finished searching tap the <Done> button at the bottom of the screen. If all of the items shelf order list are found, an alert screen will notify you. Tap the Ok button to continue.

1.7.3. Shelf Order Alert

When a Shelf Order Alert is displayed for an item that is not in the list, only the barcode will be displayed. The Item Status field will indicate "Not in List".

The <Show Prev.> button will display the previous item read. You can tap this button to display the last item in order to assist in locating the item on the shelf. This item should probably be removed from the shelf, since it is not in the shelf order list.

The <Show Next> button will display the next item read.

The <Show Item> button returns the display to the item that is not in the list.

Tap the Continue button when you are ready to resume the scan. Be sure to start at the position you were in when the alert occurred.

Item Out of Shelf Order 4:40p ok

Item Status: Not in List

Barcode: 4A4A4A4A4A4A4A

4A4A4A4A4A4A4A

Show Prev.

Show Next

Offset to last item in order: 0

Offset in use: 10

Show Item

Continue

Figure 1-19: Shelf Order Alert – Not in List

When a Shelf Order Alert is displayed for an item that is not in shelf order, the barcode, shelf location, and title will be displayed. The Item Status field will indicate "Out of Range". The <Show Prev.> button will display the previous item read. You can tap this button to display the last item in order to assist in locating the item on the shelf. This item should probably be repositioned on the shelf, since it was found in the wrong order in the shelf order list.

The <Show Next> button will display the next item read.

The <Show Item> button returns the display to the item that is not in the list.

The Offset to last item in order field will display the offset value from the last item read in order. For an alert to occur, this offset is greater than the Offset in use that is displayed.

Tap the Continue button when you are ready to resume the scan. Be sure to start at the position you were in when the alert occurred.

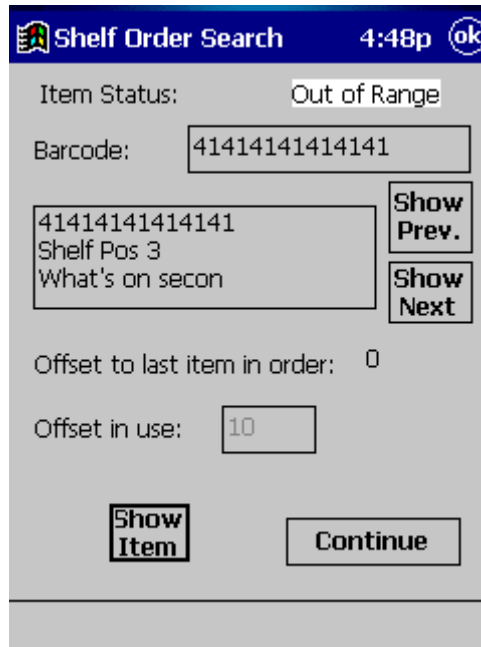


Figure 1-20: Shelf Order Alert – Out of Range

Remember that the Offset in use and the Alert enable settings may be changed once the search is resumed.

1.7.4. Shelf Order Results

When the shelf order search is completed, the Shelf Order Results screen is displayed. You can create result files of various types, including a new search list file. The entire list of items read may be displayed and scrolled through. Note that there is no prompt given to perform file transfer at this point. Once the result files have been created, you can dock the PPT 2700 to copy the files to the ILS Application Server. Refer to the Wireless Operations sections for details of file transfer using a Wireless PPT 2700.

The Shelf order results window shows the counters from the completed search. Tap on the counter of interest before selecting one of the file buttons.

The <New Search List> button will create a new Search List file ".psl" that can be used to perform a new Item Search. For example, if the "Items not in file" line is selected, a new search could be performed to locate the items that do not belong on the shelf.

The <Create File> button will create a new Search Order Result file. The type of file created is selected based on which counter is selected in the Shelf order results window. The file extension is indicated in parentheses below.

1. Items in file – the original count of the items in the Shelf Order file. (no file is created.)
2. Items in order – the number of items that were read in shelf order. (".pio")
3. Items out of order – the number of items that were read that are not in shelf order. (".poo")
4. Items not found – the number of items in the Shelf Order file that were not found. (".pmi")
5. Items not in file – the number of items read that were not in the Shelf Order file. (".pnl")

The File Created field shows the path of the file that was last created when either the <New Search List> or <Create File> button was selected.

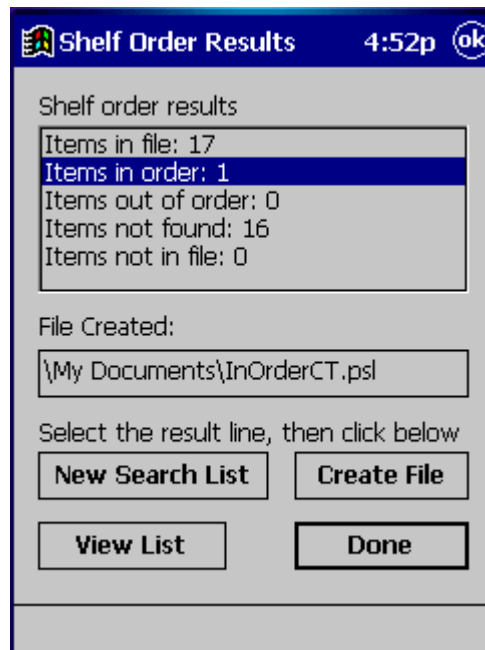


Figure 1-21: Shelf Order Results Screen

The View List button uses the Shelf Order View List screen to display the entire results of the scan. Each item read will be displayed in order, with the appropriate status information. Use the <Show Prev.> and <Show Next> buttons to step through the list.

Tap the Done button to return to the Shelf Order Results screen.

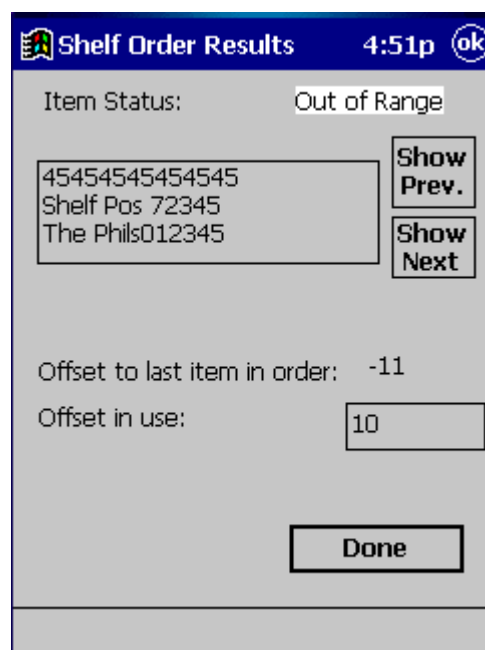


Figure 1-22: Shelf Order View List Screen

Tap the Done button when you are finished with the Shelf Order Results screen. The Shelf Order screen will be displayed. Tap the Ok button at the top-right of the screen to return to the ILS Inventory main screen. Or, you may tap the Start button to repeat the last Shelf Order search.

1.8. Wireless Operations

The Wireless PPT 2700 offers the ability to transfer files to and from the ILS Application Server using the Wireless network. To transfer files, select the <Wireless File Transfer> button from the ILS Inventory Main Screen.

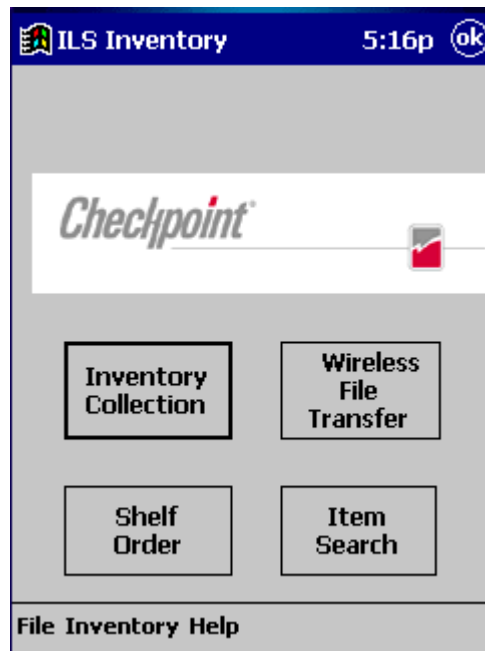


Figure 1-23: Wireless PPT 2700 ILS Inventory Main Screen

The top line of the screen indicates the direction of the file transfer currently selected.

The down arrow to the right of the "All Files (*.*)" line allows you to choose the file type to be displayed. When a new selection is made, the file list displayed below will be updated.

To transfer a file, tap the file name, then tap the <Copy File> button. Only one file at a time is transferred.

The Status field displays the results of the file transfer. When it completes successfully, the file is removed from the list. Any error will be indicated in this field.

Tap the <Get Files> button to change the file transfer direction to copy files from the ILS Application Server to the PPT 2700.

Tap the <Put Files> button to change the file transfer direction to copy files from the PPT 2700 to the ILS Application Server.

Tap the Done button when you are finished with the Wireless File Transfer screen.

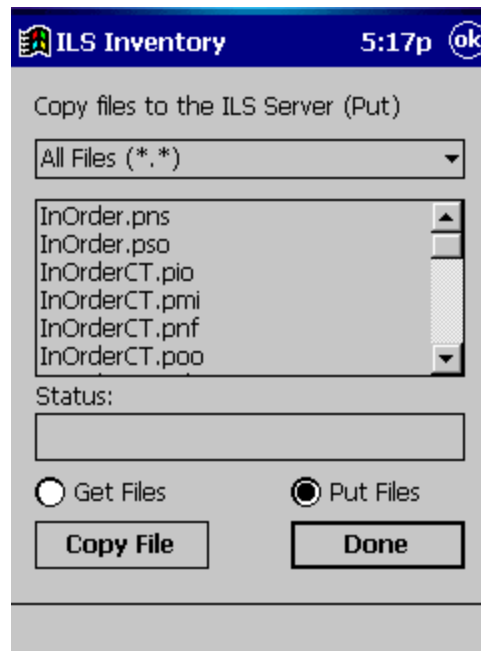


Figure 1-24: Wireless File Transfer Screen

1.9. Hints on Using the PPT 2700

There are no double-clicks on the PPT 2700 unit. All actions are accomplished by a single tap.

If you have not used the PPT 2700 within the configured time, the device will go into Power Save mode. This means that the device will turn off. To turn it back on, press the red power button. You will be returned to the last screen presented prior to shut off.

If you have trouble closing the ILS Inventory Program, tap on the Windows icon in the upper left hand corner of the screen. Tap on the Systems tag and then on the memory icon. Tap on the Running Programs tab. This will show you all of the programs currently running. To close only one program, highlight the program name and tap the Stop button. To stop all programs, simply tap the Stop All button.

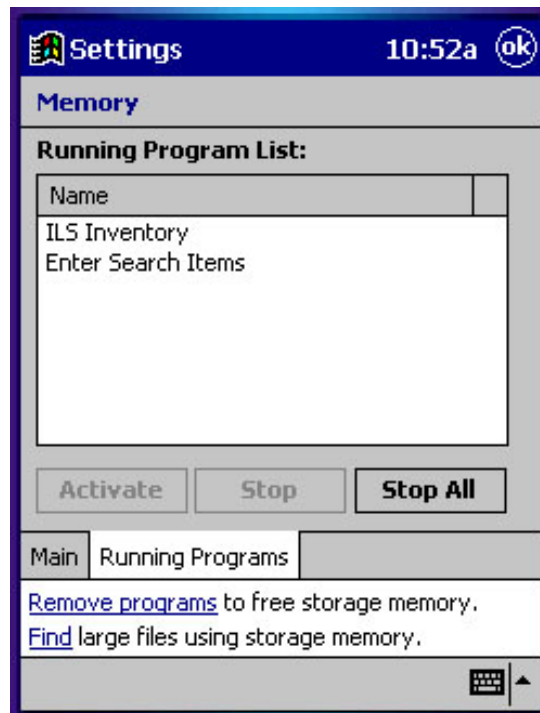


Figure 1-25: Running Programs