

Aphyni
Ceiling Fan with Light

User Manual



Tips:
Thank you for ordering and using Aphyni Ceiling Fan with Light, please read the manual carefully before use. Note: The fan light line drawings are for instructional purposes. The actual product received may vary. If there are any problems during the use, please contact us in time.
Customer Service ✉Email: Support@aphyni.com

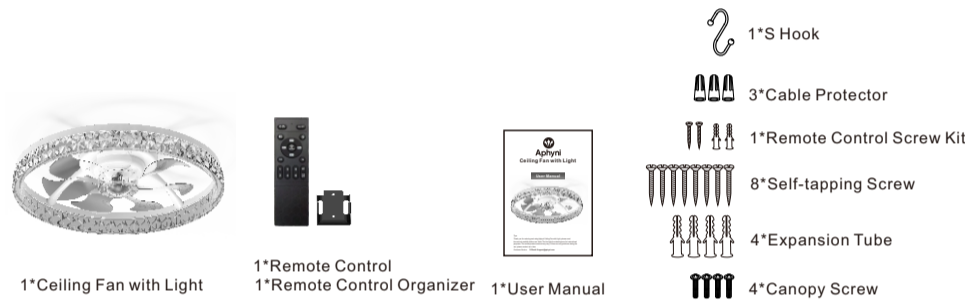
Safety Instructions

Power Off: Before performing any electrical work, turn off the power at the circuit breaker or fuse box. Simply switching off the light is not enough to prevent electric shock. Professional Installation: Electrical installation must be performed by a licensed electrician.
Mounting Height: The fan blades must be at least 7 feet (2.1 m) above the floor.
Reversing Switch: If the fan has a reverse function, do not switch directions while the blades are moving. Turn off the fan and wait for the blades to stop completely.
Clear Blade Path: Keep objects away from the fan blades to prevent damage or injury.
Maintenance & Cleaning: Use a dry or slightly damp soft cloth to clean the fan. Do not use water or cleaning agents. Be cautious when working around the fan to avoid damage.
Electrical Connections: After wiring, position the spliced conductors upward and carefully push them into the outlet box. The grounded and grounding conductors should be on one side of the box.
Check Fasteners: Before installation, ensure all screws are tight to prevent loosening, wobbling, or falling.
Blade Brackets: Do not bend the blade brackets during or after installation, as this may cause imbalance and safety issues.
Wiring Diagram: The electrical diagram is for reference only. Wiring may vary depending on the fan model.

WARNING:

To reduce the risk of fire, electric shock, or injury, install the fan only on an outlet box labeled "acceptable for fan support."
Do not insert objects into the fan blades' path. Ensure the blades can rotate freely after installation.

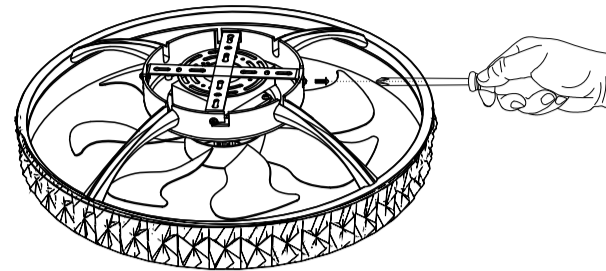
Package Contents



Installation Method

Note Before installation, test the fan light to ensure it functions properly. If you encounter any issues, such as malfunction or missing parts, please contact us.

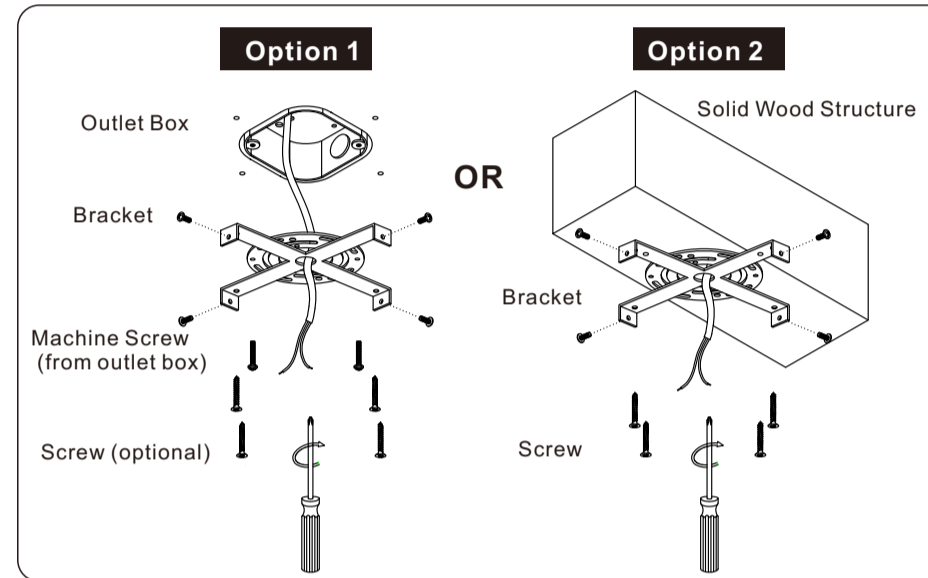
Installation Step 1: Mounting the Bracket



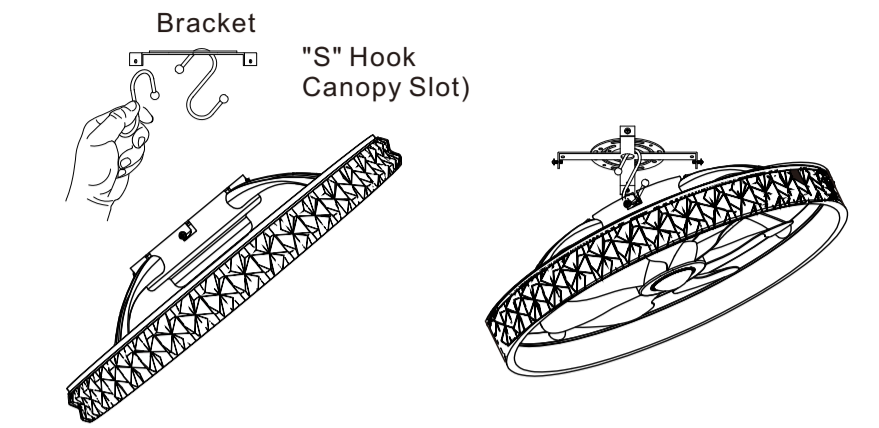
Prepare the Bracket: Loosen the screws on the canopy (do not remove them) and detach the bracket from the canopy.

With an Outlet Box: Secure the bracket to the outlet box using the provided screws. Then, fasten the crossbar to the ceiling with four screws (optional).

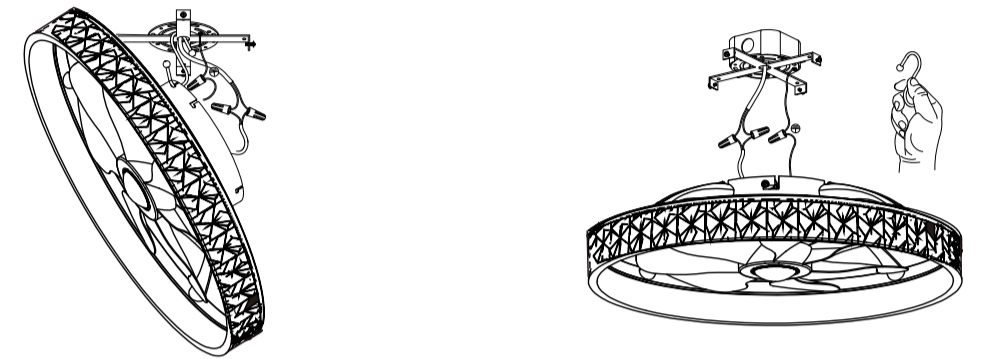
Without an Outlet Box: Attach the crossbar directly to a solid wood structure using four screws.



Installation Step 2: Connect the Wires



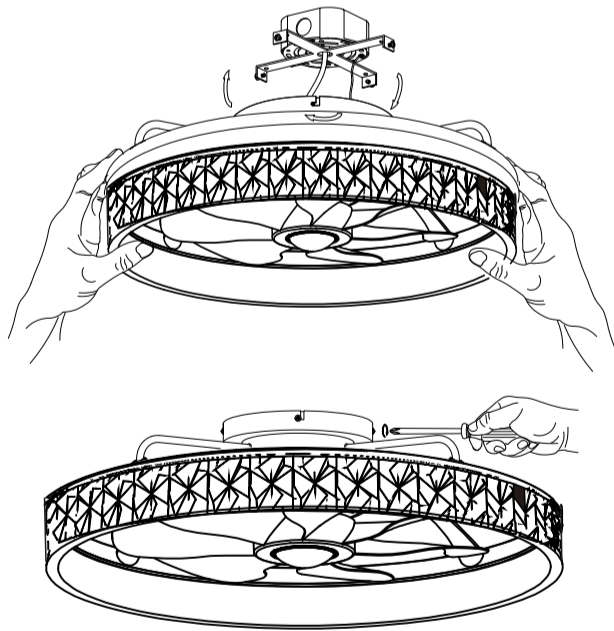
1. Hang the fixture onto the bracket with "S" hook provided.



2. Connect wires from the fixture to the wires from outlet box with wire nuts, ground wire (green, green/yellow or bare copper) to ground wire, neutral wire (white or blue) to the neutral wire, hot wire (black or brown) to the hot wire. Wrap the connections with electrical tape.

3. Remove the "S" hook.

Installation Step 3: Fix the Canopy



- Partially fasten the bracket screws without tightening them.
- Align the canopy's "L" slots with the bracket screws, then rotate to lock it in place.
- Tighten the screws.

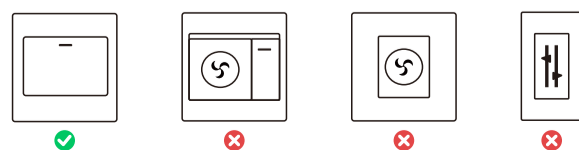
Control Methods

Supports three ways to control the fan light: Wall Switch, Remote Control, and APP Control.

1.Wall Switch

If a wall switch is installed, please keep it turned on during regular use to ensure proper operation of the fan light.

Note: This switch cannot adjust fan speed or change lighting modes.



2.Remote Control

Pairing the remote control with the fan light:

- Pairing the Remote: Turn on the power and wait for a "beep." Press and hold the "Code Checking" button for 3 seconds confirming a successful pairing. If unsuccessful, turn off the power, wait 1 minute, and try again.
- Remote Not Working: Check the battery and replace it if needed. Remove the battery if not in use for a long time.

Remote Control Button Functions:

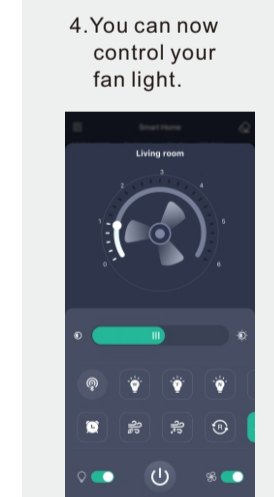
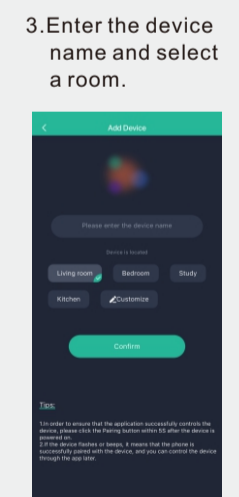
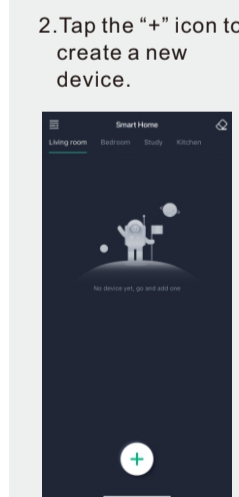


Battery not included

3. App control

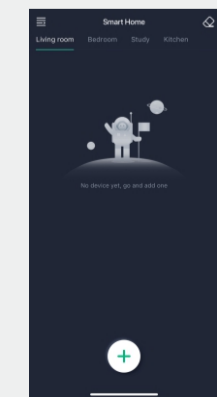
Installation & Usage:

- Scan the QR code to download the app.

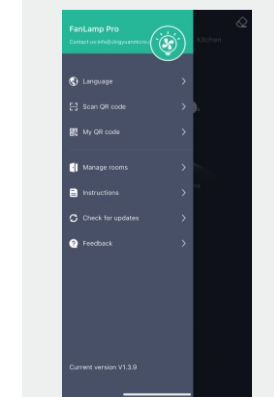


More Settings:

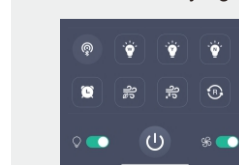
- Tap the button in the top left corner.



- Explore additional settings.



- Before using the app to control your fan light, you need to pair them. Follow these steps:
 - Turn on the fan light.
 - Open the app and tap the '+' icon to start pairing.
 - If pairing fails, turn off the fan light for one minute and try again.



Troubleshooting

1 Fan doesn't work

- Make sure the fixture is connected to an ON/OFF wall switch, not dimmer switch.
- Check the remote control battery (not included in this package).
- Check the circuit breaker to ensure the power is on.
- Turn off power from the circuit breaker, then loosen the canopy and check all the connections according to the wiring diagram.

2 Lights Do Not Light Up / Flicker / Noisy Operation

- Make sure the fixture is connected to an ON/OFF wall switch, not dimmer switch.
- Check your power and switch to make sure it's power on.

3 Noisy Operation

- Re-tighten all screws on bracket.
- Check to see if any of the blades are cracked. If so, replace the blades.

4 Remote does not work

- Make sure the battery is installed correctly.
- Pair the remote control again.
- Install 2 new batteries.

After-sales Service

We value every customer, your shopping experience means a lot to us. We invite you join our brand member to enjoy extended warranty service from 5 years to lifetime warranty, by scanning the QR code.



Extended Warranty www.aphyni.com

If anything wrong occurs, please contact customer after-sales service.

✉Email: Support@aphyni.com

<div>FCC Statement: This device complies with part 15 of the FCC Rules. Operation is subject to the following two conditions:(1) This device may not cause harmful interference, and (2) this device must accept any interference received, including interference that may cause undesired operation. This equipment has been tested and found to comply with the limits for a Class B digital device, pursuant to part 15 of the FCC Rules. These limits are designed to provide reasonable protection against harmful interference in a residential installation. This equipment generates, uses and can radiate radio frequency energy and, if not installed and used in accordance with the instructions, may cause harmful interference to radio communications. However, there is no guarant ee that interference will not occur in a particular installation. If this equipment does cause harmful interference to radio or television reception, which can be determined by turning the equipment off and on, the user is encouraged to try to correct the interference by one or more of the following measures: —Reorient or relocate the receiving antenna. —Increase the separation between the equipment and receiver. —Connect the equipment into an outlet on a circuit different from that to which the receiver is connected.—Consult the dealer or an experienced radio/TV technician for help. Caution: Any changes or modifications not expressly approved by the party responsible for compliance could void the user’s authority to operate the equipment. This equipment complies with FCC radiation exposure limits set forth for an uncontrolled environm ent. This transmitter must not be co - located or operating in conjunction with any other antenna or transmitter.</div>			