

Basic User Manual

Gaming TWS earbuds(YY2977) and USB transceiver dongle(YY2980)

Charging the headset

1. Set the headset units(YY2977) into the charging case.

2. Connect the charging case to an AC outlet.

Use the supplied USB Type-C cable and a commercially available USB AC adaptor.

The indicator (orange) on the charging case lights up, and charging starts on the headset and the charging case.

When charging of the headset and the charging case is complete, the indicator (orange) on the charging case turns off automatically.

3. Remove the USB Type-C cable.

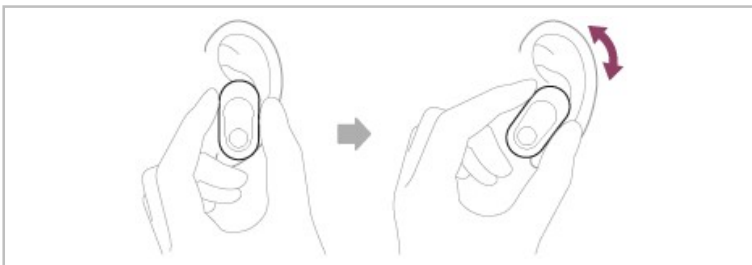
Wearing the headset

1. Hold the headset unit with your fingers.



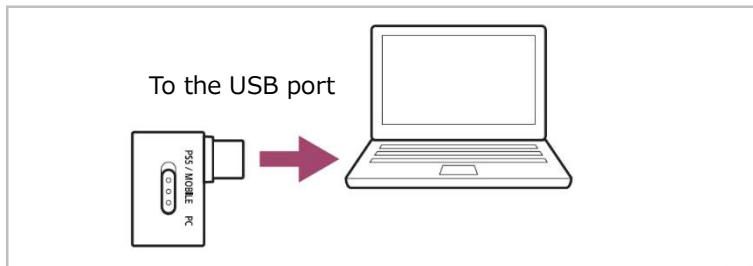
2. Put the headset units into both ears, and adjust the fit of the headset units to your ears.

Twist the headset unit to slide the earbud tip deep into your ear canal.

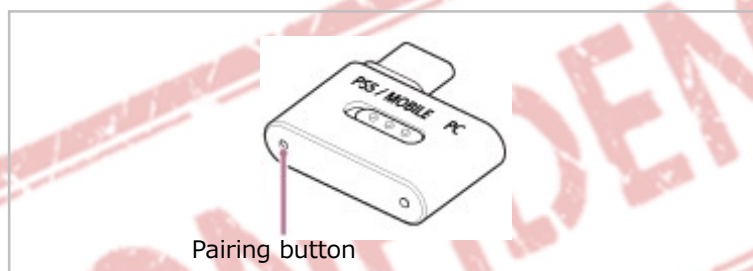


Connecting to a computer

1. Turn on the headset.
2. Connect the supplied USB transceiver(YY2980) to your computer.



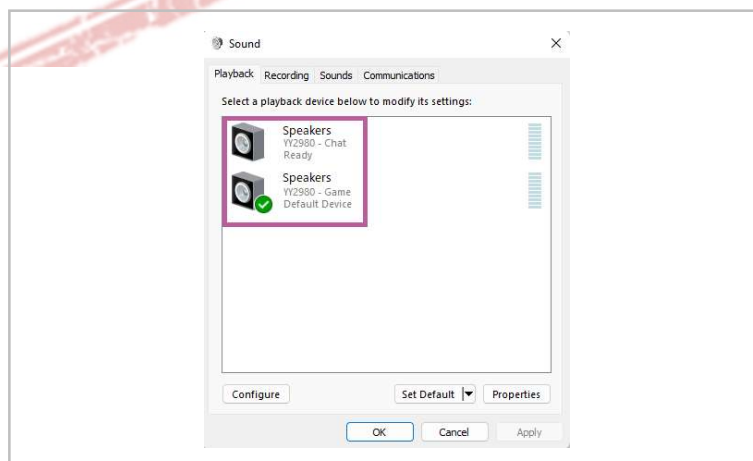
When you connect the USB transceiver to your computer, the transceiver automatically connects to the headset, and then the indicator (white) of the USB transceiver lights up. If the transceiver cannot connect to the headset, press and hold the pairing button of the USB transceiver for about 5 seconds or more.



Set the slide switch of the USB transceiver to the "PC" side.

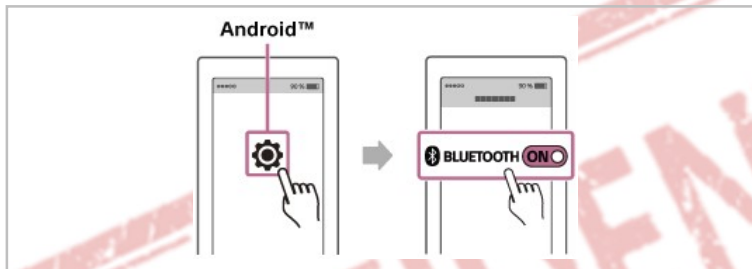
3. Open the [Sound] screen on your computer and confirm the connection.

"Speakers YY2980 - Chat" and "Speakers YY2980 - Game" are displayed under the [Playback] tab on the [Sound] screen, the USB transceiver is recognized by your computer and can be used as a playback device.



Pairing and connecting with an Android smartphone

1. Set the headset units into the charging case.
2. With the charging case lid open, press and hold the pairing button on the back of the charging case for about 5 seconds.
The indicator on the charging case starts flashing in blue.
3. Remove the headset units from the charging case and then put the headset units into your ears.
4. With the Android smartphone supporting LE Audio, turn on the smartphone's Bluetooth function.





5. Touch [YY2977].

The headset and Android smartphone are paired and connected with each other. You will hear a notification sound from both headset units at the same time.

Operating the headset

1. Put the headset units into both ears.
2. Operate the touch sensors of the headset units.

To switch the noise canceling function and Ambient Sound Mode	Tap the touch sensor on the left headset unit. Each time you tap, the function switches as follows: Noise canceling function "ON" -> Ambient Sound Mode "ON" -> Noise canceling function "OFF"/Ambient Sound Mode "OFF"
To switch the microphone on/off	Hold your finger to the touch sensor on the left headset unit. Each time you hold your finger to the touch sensor, the microphone switches between on and off.

 (To increase the volume)	Tap the touch sensor on the right headset unit. The volume increases by 1 step.
 (To decrease the volume)	Hold your finger to the touch sensor on the right headset unit. The volume decreases by 1 step (it decreases continuously when you keep holding your finger to the touch sensor).

Receiving a call

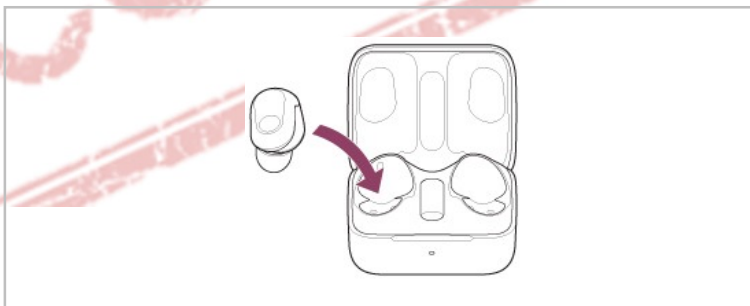
1. Connect the headset to an Android smartphone via a Bluetooth connection beforehand.
2. When you hear a ring tone, tap the touch sensor on the left or right headset unit twice quickly to receive the call.
3. When you have finished your call, tap the touch sensor on the left or right headset unit twice quickly to end the call.

Resetting the headset

If the headset cannot be turned on or cannot be operated even when it is turned on, reset the headset. This section explains how to reset one of the headset units at a time.

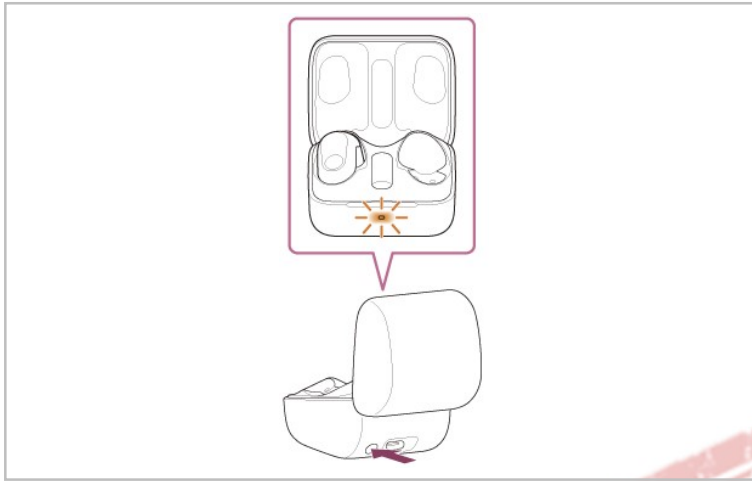
1. Set one of the headset units into the charging case.

Leave the charging case lid open.



2. Press and hold the reset button of the charging case for about 20 seconds or more.

After about 15 seconds, the indicator (orange) on the charging case flashes slowly for about 5 seconds.



Then, the indicator on the charging case turns off and the headset will be reset. When resetting is complete, the indicator (orange or green) on the charging case lights up for about 3 seconds, and then turns off.

3. Check that the indicator turns off and then release your finger.
4. Remove the headset unit from the charging case and start the operation again from step 1. with the other headset unit.