



EDISecure® XID 8300 Retransfer Card Printer

Thank you for purchasing this product.
Please read through the “Instruction Manual” in the CD-ROM carefully in advance to ensure proper use of this product.
Also, to make sure that the product is used safely, please read through the “Safety Precautions” in the “READ ME FIRST” booklet. Please store the manuals properly after reading so that they can be referred to whenever necessary.

Place this “Getting started guide” near the printer and use it as and when needed.

Accessories

- CD-ROM1
- Getting started guide.....1
- READ ME FIRST (LST1013)1
- Power Cord (2 m)2
- Cleaning Card1
- Card Stacker1
- USB 2.0 Cable (2m).....1
- Gloves1
- Tweezers1

Products sold separately

- To purchase these items, consult our authorized dealers.
Use the retransfer film or ink ribbon within half a year after purchase.
- Ink Ribbon (YMCK), 1,000 frames/roll (Model: DIC10216)
 - Ink Ribbon (YMCKK), 750 frames/roll (Model: DIC10217)
 - Ink Ribbon (YMCK-PO), 750 frames/roll (Model: DIC10218)
 - Ink Ribbon (YMCK-UV), 750 frames/roll (Model: DIC10313)
 - ART Retransfer Film, 1,000 frames/roll (Model: DIC10319)
 - Cleaning Kit (Model: DIK10044)
Set incl. 10 print head cleaning swabs, 10 cleaning tissues for rollers and 10 special cleaning cards
 - Magnetic Stripe Encoder Head Cleaning Cards (Model: DIC10311)
Box of 10 cards

CD-ROM Content

- Instruction Manual

Content of Instruction Manual

- Before Use Precautions, disclaimer, etc.
- Operating the Printer.....Procedures for printing cards
- Replacement.....Procedures for replacing consumable items
- Maintenance.....Cleaning procedures
- Troubleshooting..... Actions to take when troubles occur
- Setup..... Installation, connection

Specifications

- Operating environment conditions
Temperature: 15 °C to 30 °C
(When peel-off ink, UV ink is used: 17 °C to 28 °C)
Humidity: 35 % to 70 % No condensation
(When peel-off ink, UV ink is used: 35 % to 60 %)
- Storage environment conditions
<Printer unit>
Temperature : -15 °C to 55 °C
Humidity : 20 % to 80 %
<Printing media (retransfer film or ink ribbon) / card>
Temperature : 5 °C to 25 °C
Humidity : 40 % to 60 %
- Power supplyAC 100 V - 120 V, 50 Hz/60 Hz
AC 220 V - 240 V, 50 Hz/60 Hz
- Power consumption..... 310 W
(maximum power when all options are installed)
- Current consumption.....3.5 A (100 V system)
1.6 A (200 V system)
- Mass..... approx. 14.4 kg
(single-sided printer, excluding optional built-in items)
- Dimensions 343 mm x 411 mm x 322 mm (W x H x D)

* The specifications and appearance of this product may be modified for improvement without prior notice.

Function & Option Checklist

Use the checklist below to identify the functions and options of the printer in use. Tick accordingly.

Model name:

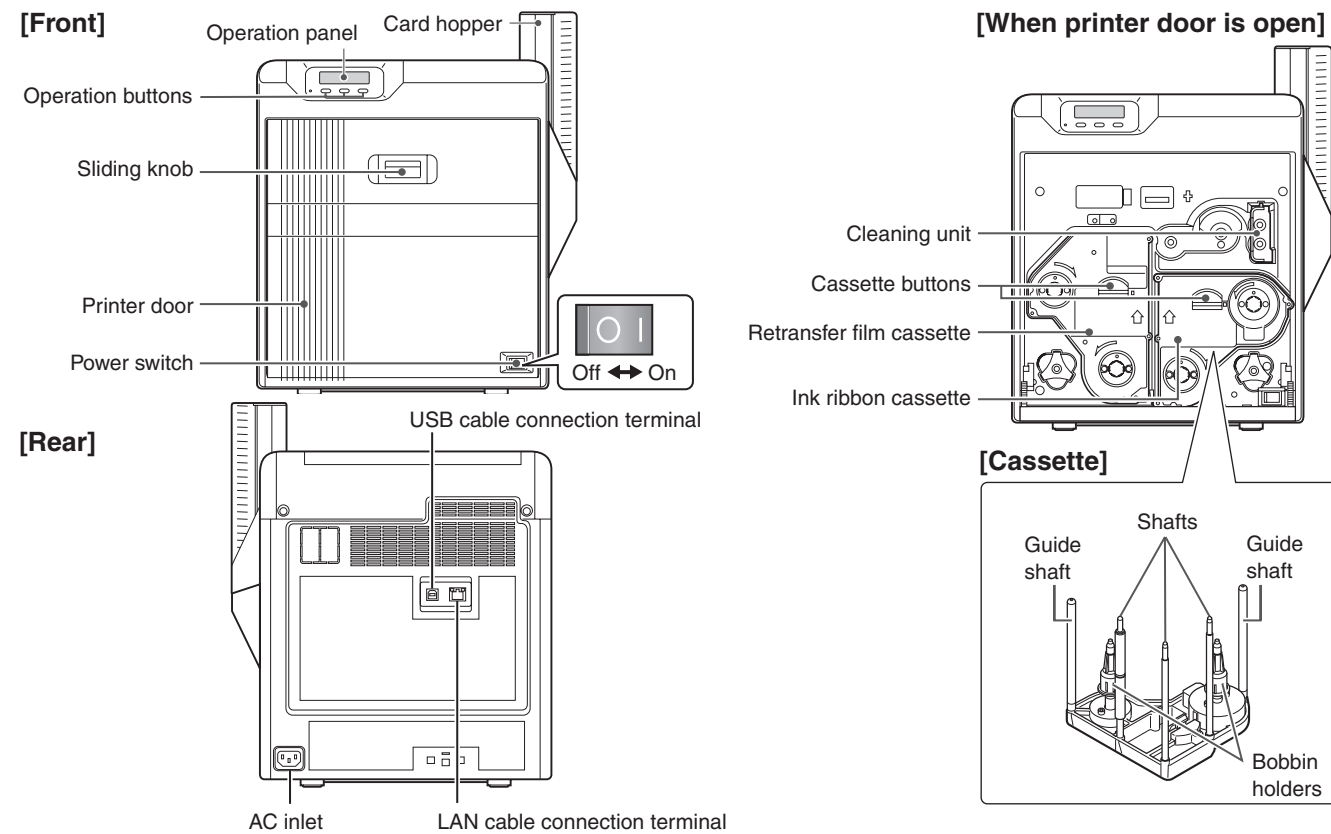
Function	
Single-sided Printing	Double-sided Printing

Option			
Bend Remedy unit	Magnetic Encoder	Contact IC Encoder	Non-contact IC Encoder

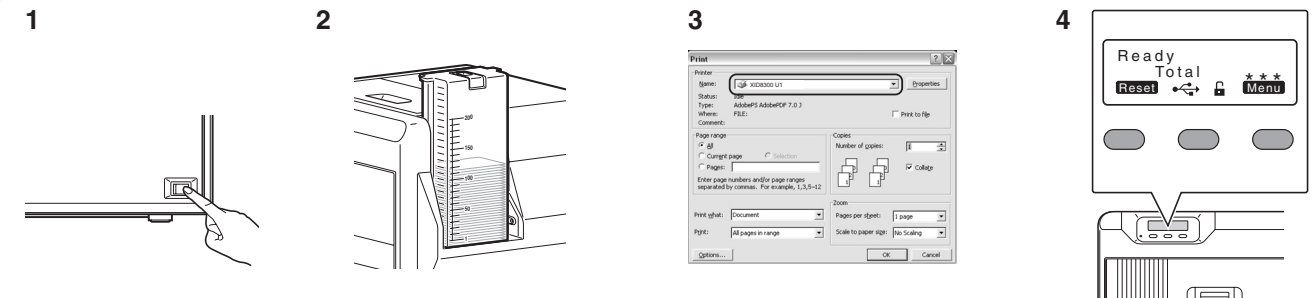
MEMO

Matica Technologies AG
Theresienhoehe 30 D-80339 Munich Germany
Phone : +49 89 5108 588 0

Name of Parts



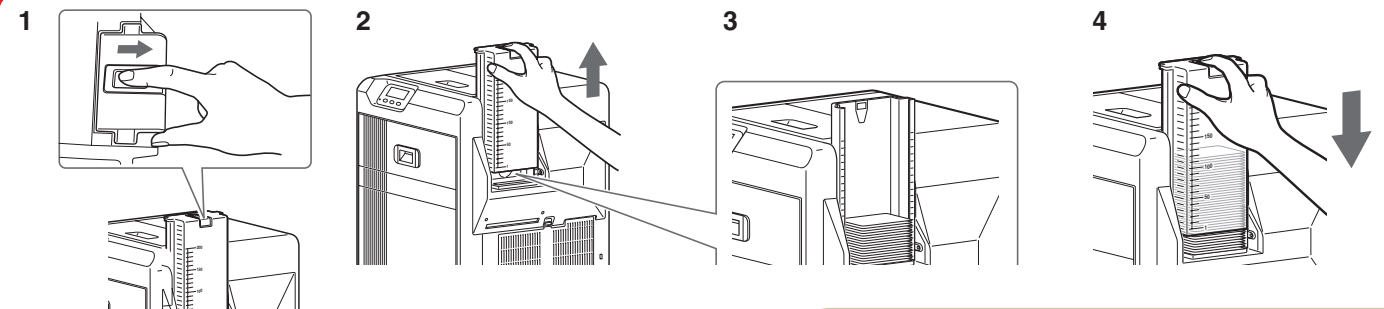
Printing a Card



Precautions

- If you see an [Initializing..] or [Preheating..] message on the LCD panel of the printer, this means the printer is not ready yet. Printing cannot be performed until a [Ready] message appears.
- Printing the card on the side with the magnetic stripe may cause printing errors or damage to the card's functions. If you want to do so, please consult our authorized dealers in advance.
- For printing using application software prepared by the user, refer to the instruction manual of the corresponding software.

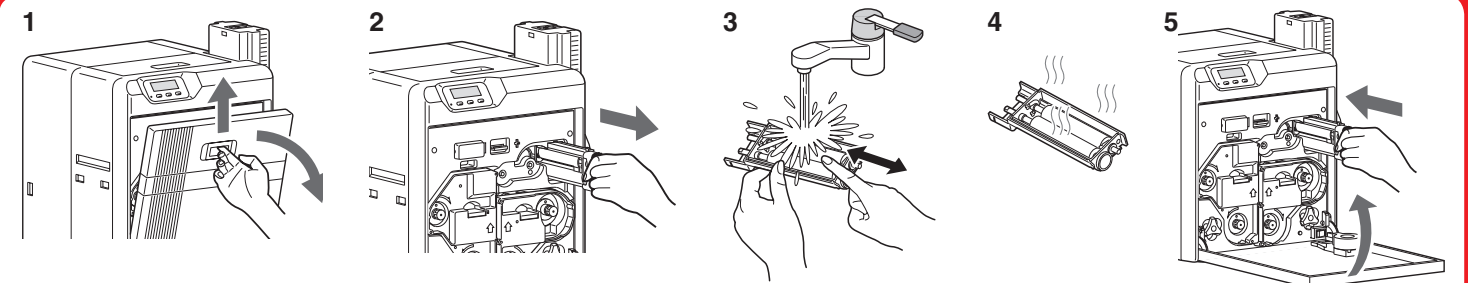
Loading Cards



Precautions

- If the security lock function is turned on, the card hopper will be locked. Turn off the function from the computer. After loading the card, turn on the function again from the computer.
- Do not touch the printing surface of the card. Touching it may cause printing errors. Put on the supplied gloves when handling the cards.
- To prevent card jams from occurring, limit the number of cards stored in the card hopper at any time to about 100 pieces regardless of the card thickness.
- When using new cards, set them after making sure that they are not adhered to each other due to static.
- Align the cards before setting them in the printer. Otherwise, the card hopper cover may not close properly, and this may damage the printer.

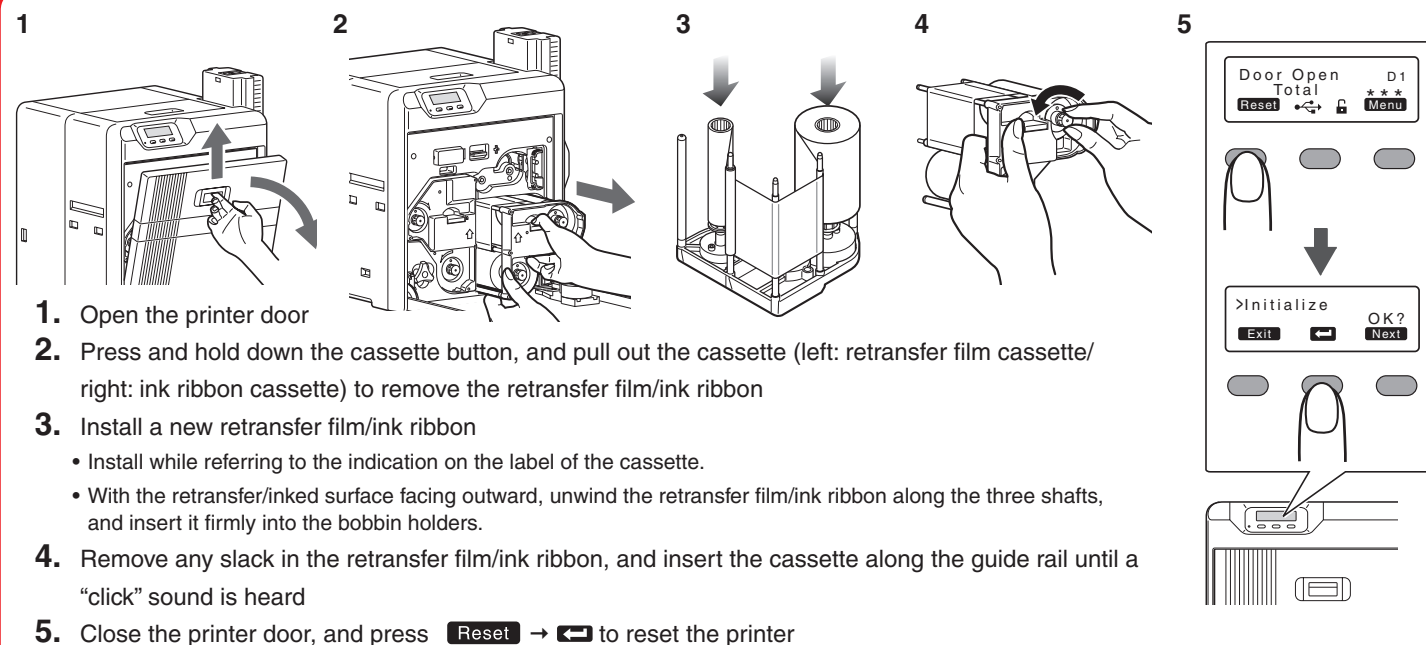
Maintenance of Cleaning Roller



Precautions

- If the security lock function is turned on, turn off the function from the computer to unlock the printer. After closing the door, turn on the function again from the computer.
- Start work after ensuring that the power has been turned off.
- If the printer is used every day, make sure to clean the cleaning roller daily at the end of the operation.
- After washing, allow the cleaning roller to dry completely before installing it to the printer.
- Do not wash the cleaning roller with anything other than water (e.g., alcohol).
- Replace the cleaning unit with a new one after using it for about one year. For details on its replacement, please consult our authorized dealers.

Replacing the Retransfer Film/Ink Ribbon



Precautions

- If the security lock function is turned on, turn off the function from the computer to unlock the printer. After closing the door, turn on the function again from the computer.
- When installing a used ink ribbon, align the yellow side of the unused ribbon with the arrow indicated on the label of the cassette.
- When installing a used retransfer film, align the unused side of the film with the arrow indicated on the label of the cassette.
- Stand the cassette on a flat surface as illustrated in the diagram.
- The cassette is heavy when the retransfer film/ink ribbon is loaded. To prevent the cassette from dropping during handling, make sure to hold it with both hands.
- Do not touch the retransfer/inked face (the side that faces outward when installed) with your hand. Touching it may cause printing errors. Put on the supplied gloves when handling the retransfer film/ink ribbon.
- Do not perform any work on the printer door. Do not place heavy objects or apply load on the printer.
- When installing a new film, make sure that at least three black lines are wound onto the take-up side.



Getting started guide

LST1587-001B

EDISecure® XID 8600 Retransfer Card Printer

Thank you for purchasing this product.

Please read through the "Instruction Manual" in the CD-ROM carefully in advance to ensure proper use of this product. Also, to make sure that the product is used safely, please read through the "Safety Precautions" in the "READ ME FIRST" booklet. Please store the manuals properly after reading so that they can be referred to whenever necessary.

Place this "Getting started guide" near the printer and use it as and when needed.

Accessories

- CD-ROM1
- Getting started guide.....1
- READ ME FIRST (LST1013)1
- Power Cord (2 m)2
- Cleaning Card1
- Card Stacker1
- USB 2.0 Cable (2m).....1
- Gloves1
- Tweezers1

Products sold separately

To purchase these items, consult our authorized dealers.
Use the retransfer film or ink ribbon within half a year after purchase.

- Ink Ribbon (YMCK), 1,000 frames/roll (Model: DIC10216)
- Ink Ribbon (YMCKK), 750 frames/roll (Model: DIC10217)
- Ink Ribbon (YMCK-PO), 750 frames/roll (Model: DIC10218)
- Ink Ribbon (YMCK-UV), 750 frames/roll (Model: DIC10313)
- ART Retransfer Film, 1,000 frames/roll (Model: DIC10319)
- Cleaning Kit (Model: DIK10044)
Set incl. 10 print head cleaning swabs, 10 cleaning tissues for rollers and 10 special cleaning cards
- Magnetic Stripe Encoder Head Cleaning Cards (Model: DIC10311)
Box of 10 cards

CD-ROM Content

- Instruction Manual

Content of Instruction Manual

- Before Use Precautions, disclaimer, etc.
- Operating the Printer.....Procedures for printing cards
- Replacement.....Procedures for replacing consumable items
- Maintenance.....Cleaning procedures
- Troubleshooting..... Actions to take when troubles occur
- Setup..... Installation, connection

Specifications

- Operating environment conditions
Temperature: 15 °C to 30 °C
(When peel-off ink, UV ink is used: 17 °C to 28 °C)
Humidity: 35 % to 70 % No condensation
(When peel-off ink, UV ink is used: 35 % to 60 %)
- Storage environment conditions
<Printer unit>
Temperature : -15 °C to 55 °C
Humidity : 20 % to 80 %
<Printing media (retransfer film or ink ribbon) / card>
Temperature : 5 °C to 25 °C
Humidity : 40 % to 60 %
- Power supplyAC 100 V - 120 V, 50 Hz/60 Hz
AC 220 V - 240 V, 50 Hz/60 Hz
- Power consumption..... 310 W
(maximum power when all options are installed)
- Current consumption.....3.5 A (100 V system)
1.6 A (200 V system)
- Mass..... approx. 14.6 kg
(double-sided printer, excluding optional built-in items)
- Dimensions 343 mm x 411 mm x 322 mm (W x H x D)

* The specifications and appearance of this product may be modified for improvement without prior notice.

Option Checklist

Use the checklist below to identify the options of the printer in use. Tick accordingly.

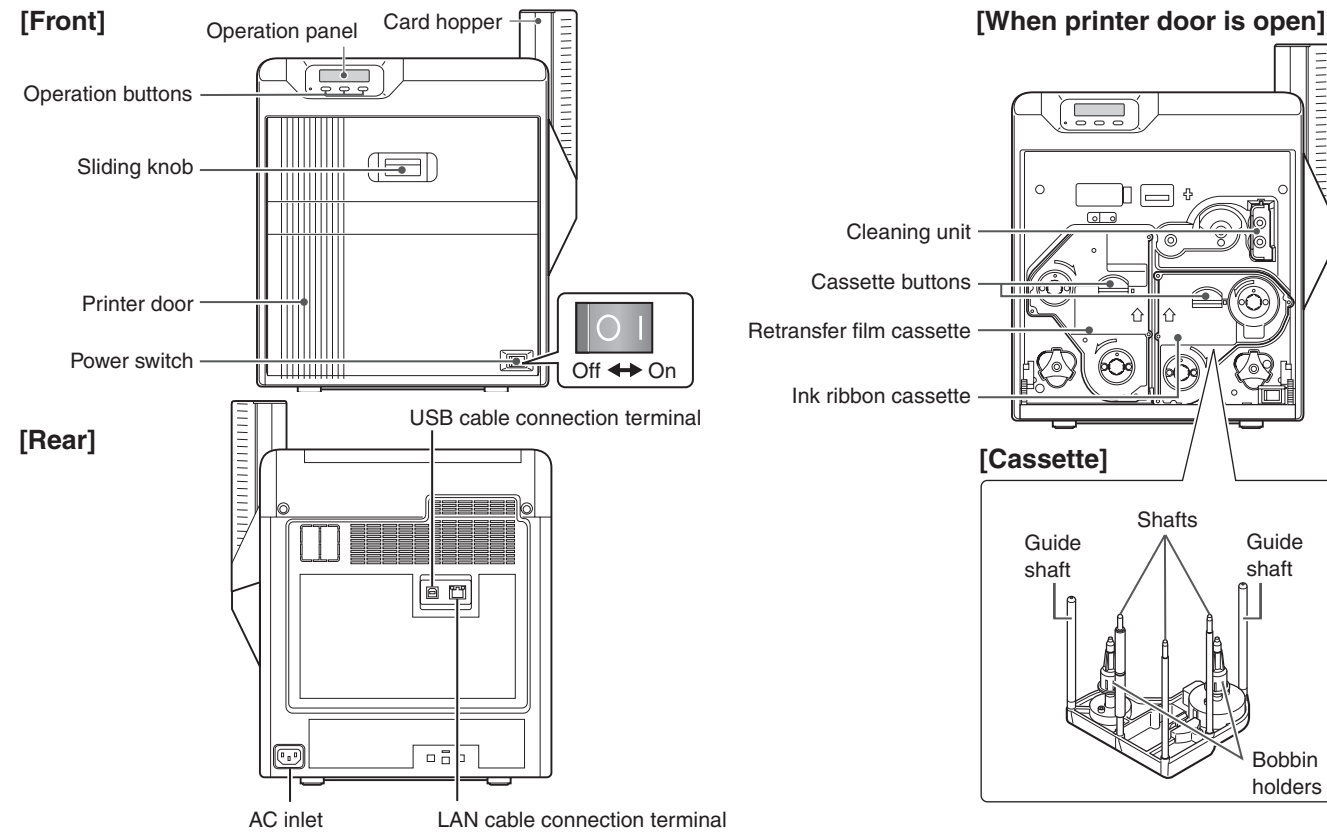
Model name:

Option			
Bend Remedy unit	Magnetic Encoder	Contact IC Encoder	Non-contact IC Encoder

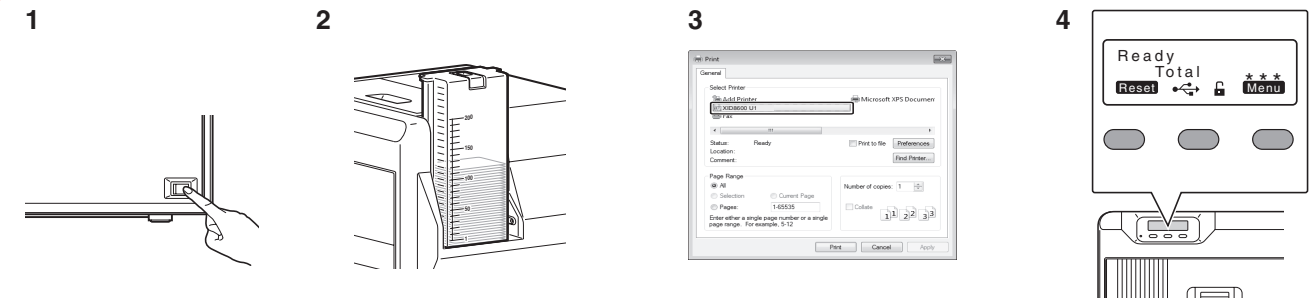
MEMO

Matica Technologies AG
Theresienhoehe 30 D-80339 Munich Germany
Phone : +49 89 5108 588 0

Name of Parts



Printing a Card

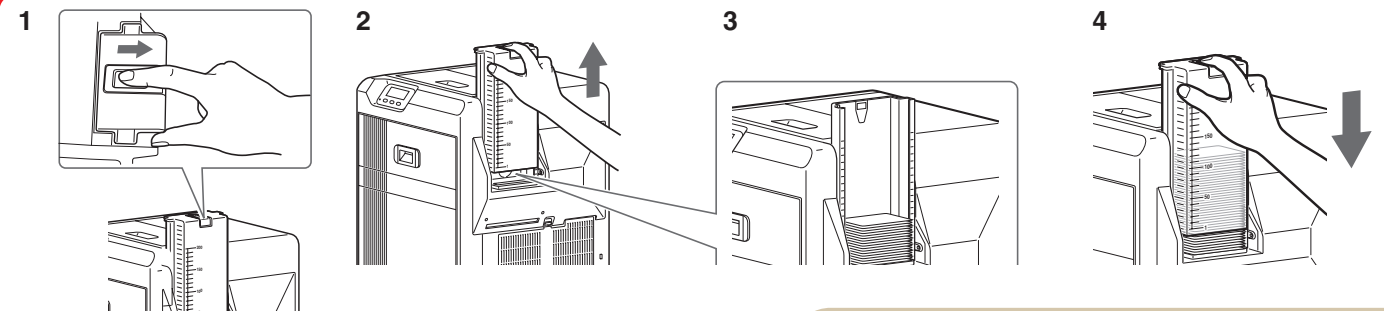


1. Turn on the power
2. Check to ensure that cards are inserted into the card hopper
3. Open the software's print settings screen, and select this printer in [Name]
4. After ensuring that a [Ready] message appears on the LCD panel of the printer, start printing

Precautions

- If you see an [Initializing..] or [Preheating..] message on the LCD panel of the printer, this means the printer is not ready yet. Printing cannot be performed until a [Ready] message appears.
- Printing the card on the side with the magnetic stripe may cause printing errors or damage to the card's functions. If you want to do so, please consult our authorized dealers in advance.
- For printing using application software prepared by the user, refer to the instruction manual of the corresponding software.

Loading Cards

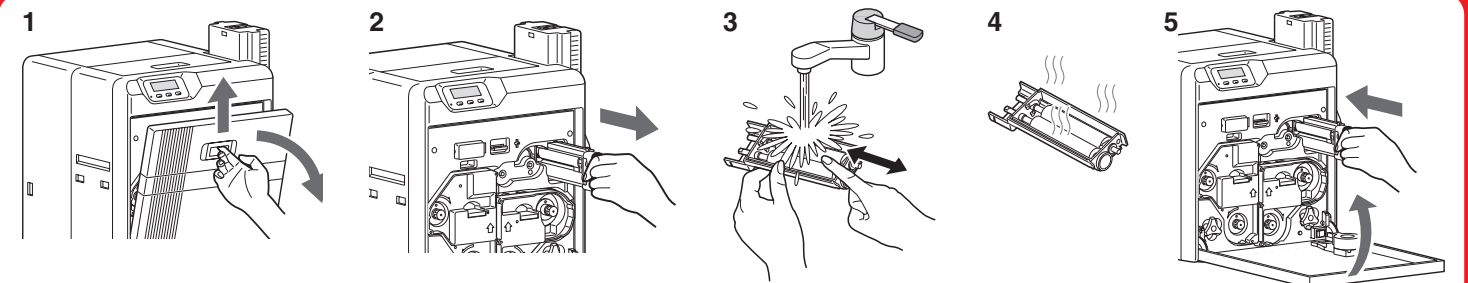


1. Set the card hopper knob to [OPEN]
2. Lift to remove the card hopper cover
3. Align the orientation of the cards, and set them in the printer
4. Install the card hopper cover, and set the card hopper knob to [LOCK]

Precautions

- If the security lock function is turned on, the card hopper will be locked. Turn off the function from the computer. After loading the card, turn on the function again from the computer.
- Do not touch the printing surface of the card. Touching it may cause printing errors. Put on the supplied gloves when handling the cards.
- To prevent card jams from occurring, limit the number of cards stored in the card hopper at any time to about 100 pieces regardless of the card thickness.
- When using new cards, set them after making sure that they are not adhered to each other due to static.
- Align the cards before setting them in the printer. Otherwise, the card hopper cover may not close properly, and this may damage the printer.

Maintenance of Cleaning Roller

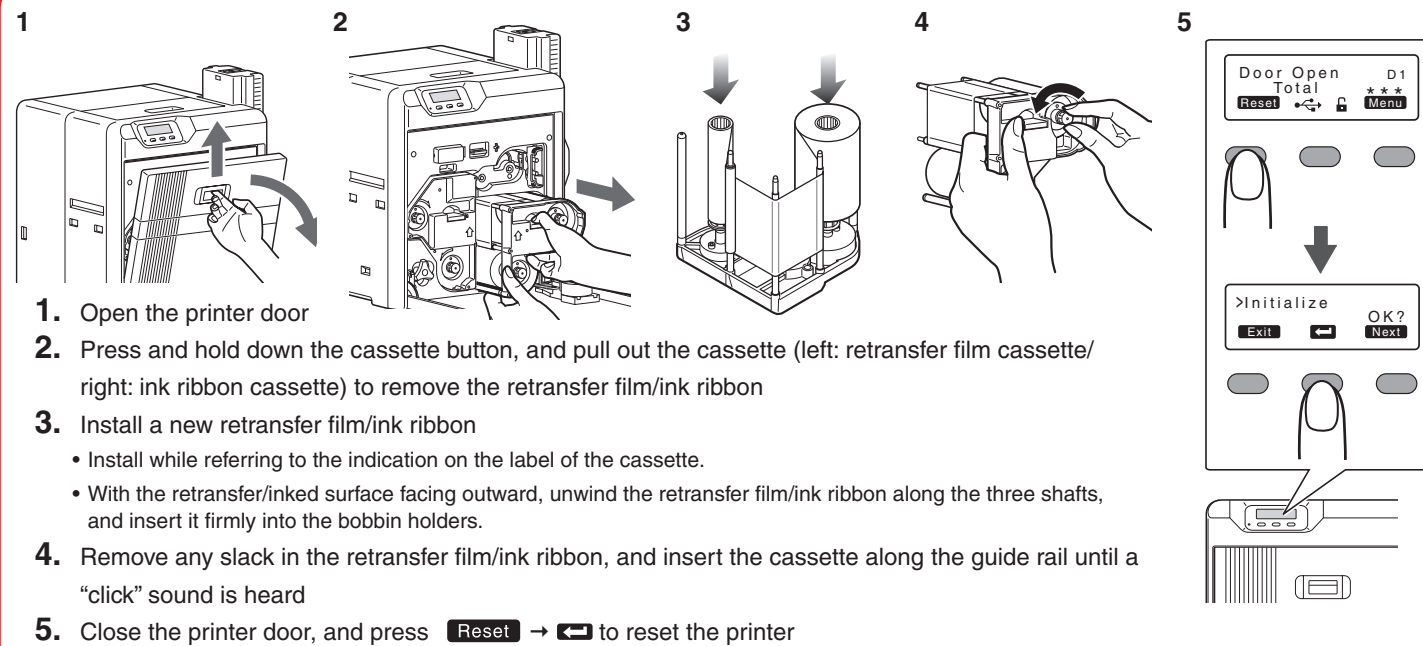


1. Open the printer door
2. Remove the cleaning unit
3. Wash the cleaning roller with water
 - Wash the roller with water, and remove any dirt from the surface of the cleaning roller with your finger.
4. Allow the cleaning roller to air dry
5. Set the cleaning unit, and close the printer door

Precautions

- If the security lock function is turned on, turn off the function from the computer to unlock the printer. After closing the door, turn on the function again from the computer.
- Start work after ensuring that the power has been turned off.
- If the printer is used every day, make sure to clean the cleaning roller daily at the end of the operation.
- After washing, allow the cleaning roller to dry completely before installing it to the printer.
- Do not wash the cleaning roller with anything other than water (e.g., alcohol).
- Replace the cleaning unit with a new one after using it for about one year. For details on its replacement, please consult our authorized dealers.

Replacing the Retransfer Film/Ink Ribbon



1. Open the printer door
2. Press and hold down the cassette button, and pull out the cassette (left: retransfer film cassette/ right: ink ribbon cassette) to remove the retransfer film/ink ribbon
3. Install a new retransfer film/ink ribbon
 - Install while referring to the indication on the label of the cassette.
 - With the retransfer/inked surface facing outward, unwind the retransfer film/ink ribbon along the three shafts, and insert it firmly into the bobbin holders.
4. Remove any slack in the retransfer film/ink ribbon, and insert the cassette along the guide rail until a "click" sound is heard
5. Close the printer door, and press **Reset** → **OK** to reset the printer

Precautions

- If the security lock function is turned on, turn off the function from the computer to unlock the printer. After closing the door, turn on the function again from the computer.
- When installing a used ink ribbon, align the yellow side of the unused ribbon with the arrow indicated on the label of the cassette.
- When installing a used retransfer film, align the unused side of the film with the arrow indicated on the label of the cassette.
- Stand the cassette on a flat surface as illustrated in the diagram.
- The cassette is heavy when the retransfer film/ink ribbon is loaded. To prevent the cassette from dropping during handling, make sure to hold it with both hands.
- Do not touch the retransfer/inked face (the side that faces outward when installed) with your hand. Touching it may cause printing errors. Put on the supplied gloves when handling the retransfer film/ink ribbon.
- Do not perform any work on the printer door. Do not place heavy objects or apply load on the printer.
- When installing a new film, make sure that at least three black lines are wound onto the take-up side.