

Shenzhen Youmi Intelligent Technology Co., Ltd.  
Address: 406-407 JinqiZhigu Building, 4/F, 1 Tangling Road, Nanshan District,  
Shenzhen City, China  
Tel: 86-075583220991; Fax: 86-075583220991  
Email: wangkun@umidigi.com

Date: 2021-05-14

FEDERAL COMMUNICATIONS COMMISSIONS

Authorization and Evaluation Division

7435 Oakland Mills Road

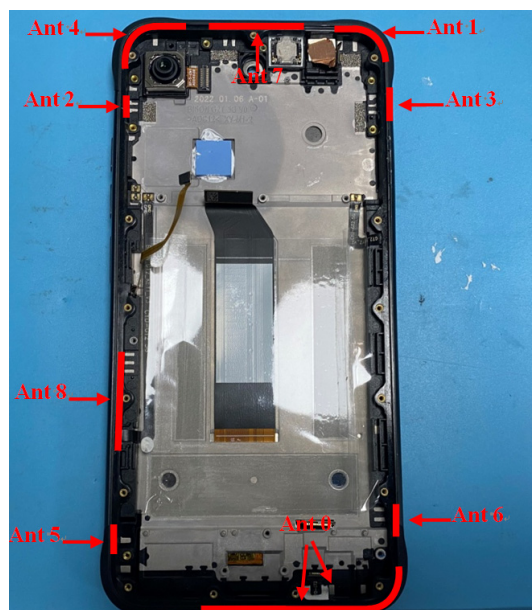
Columbia, MD21046

Dear Sir/Madam,

The Main chip, model: MT6785V, installed in our product Smart phone, model: BISON GT2, BISON GT2 PRO, FCC ID:2ATZ4-BGT2P, this chip supports LTE function, but for marketing purpose, this chip only supports LTE band 2/5/12/13/41(2555-2655MHz), not supports other LTE bands. The other LTE bands were disabled to use by manufacture in the software, the end user has no capability to activate it.

The RF chip, model: MT6631N, installed in our product Smart phone, model: BISON GT2, BISON GT2 PRO, FCC ID:2ATZ4-BGT2P, supports 5G Wi-Fi function, but for marketing purpose, this chip only supports 5G Wi-Fi(5150-5250 MHz; 5725-5850 MHz). The 5G Wi-Fi (5250-5350 MHz, 5470-5725 MHz) was disabled to use by manufacture in the software, the end user has no capability to activate it.

We confirm that Ant 2,Ant 3,Ant 5,Ant 6,Ant 7 and Ant 8 indicated below are not used in the United States.



Signature: Wang Kun  
Wang Kun  
Manager