

4G RCM Internal & External Photographs

Front of Device



External Side View (1)



External Side View (2)

Note: The markings are not representative of the final build. Refer to the Product Label Design document for the intended labelling.



Back of Device



RCM Configuration with accessories

Left: USB Cable

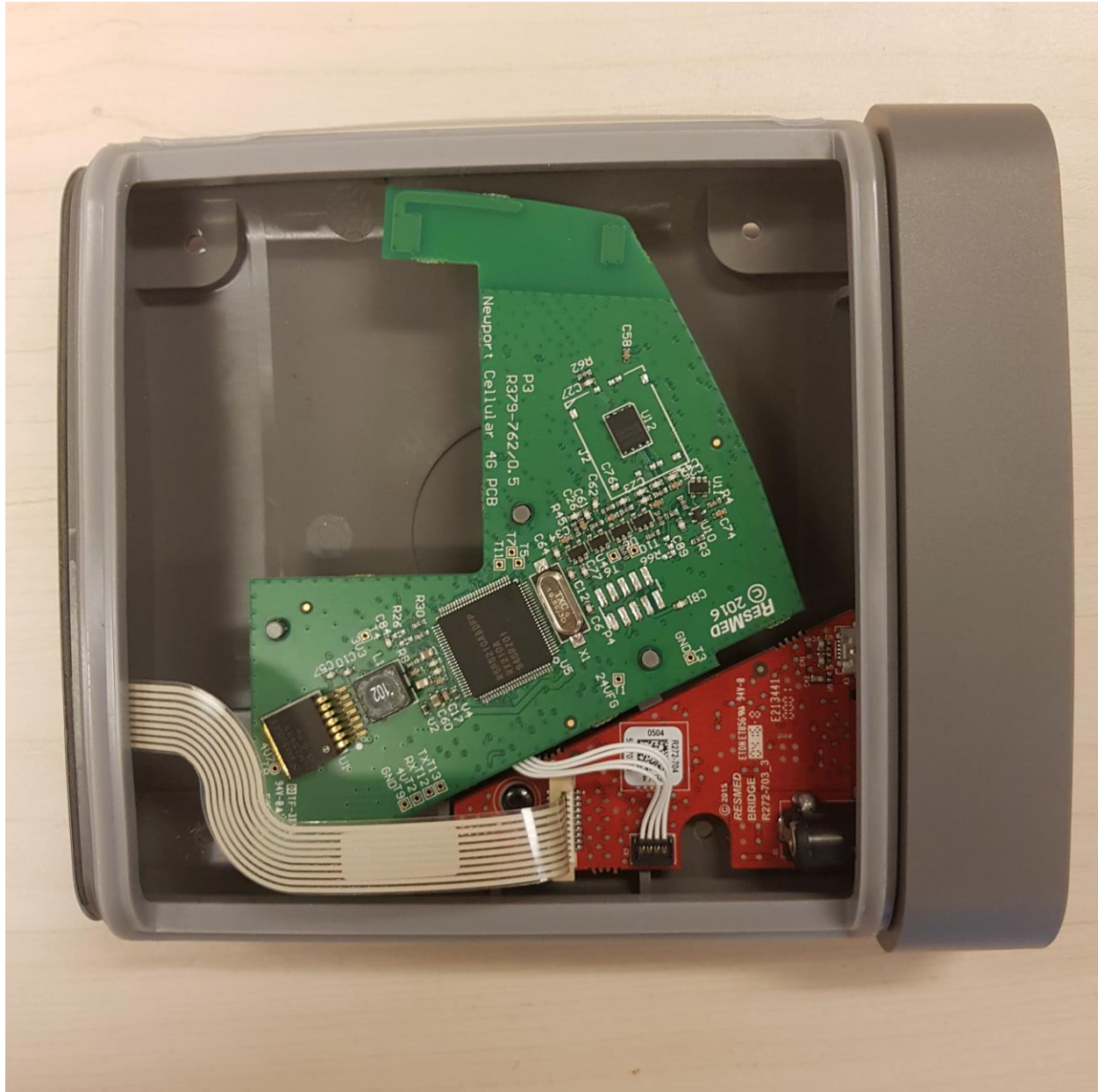
Right: 30W AC Adaptor



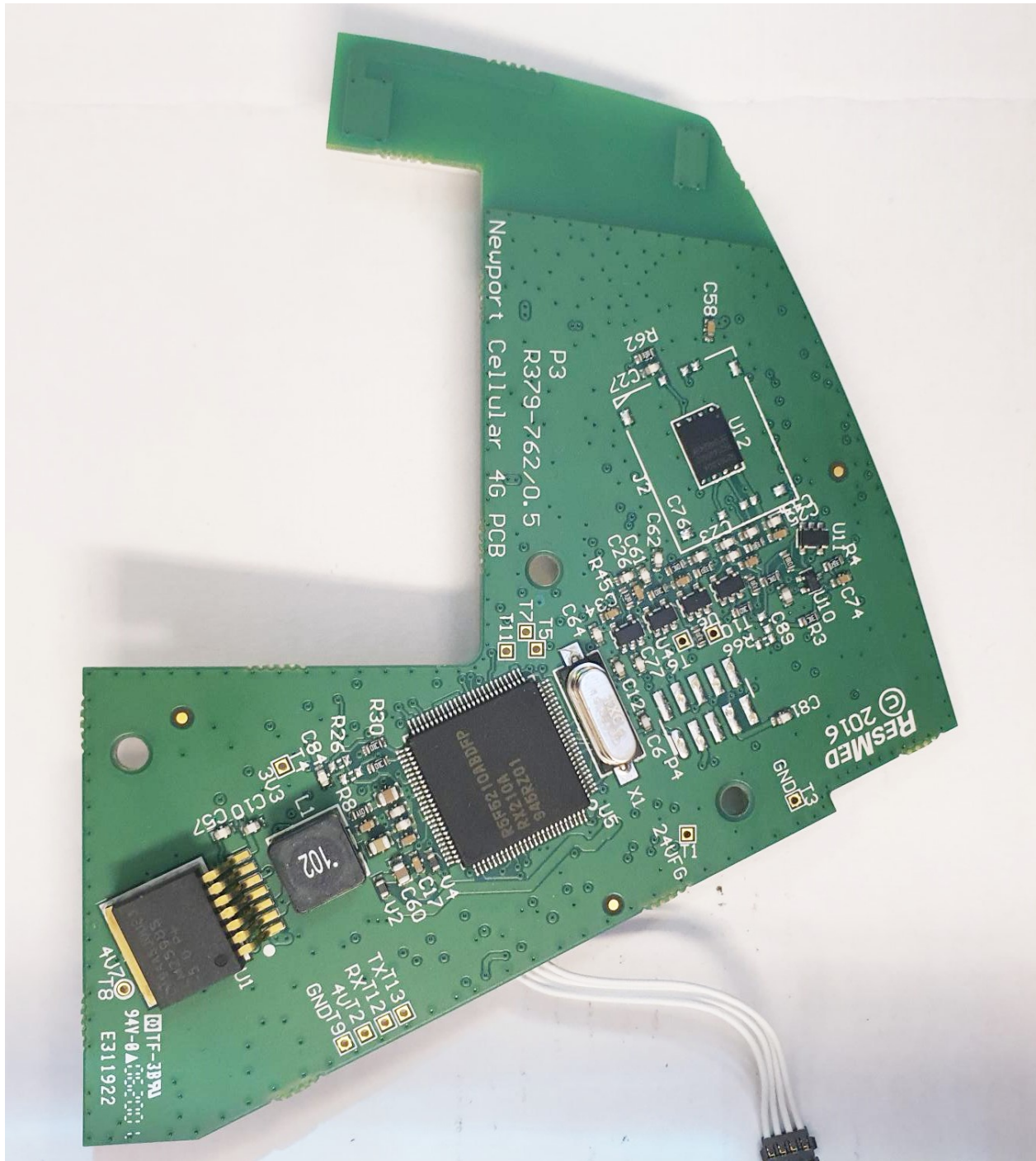
Internal View (Side Panel removed)



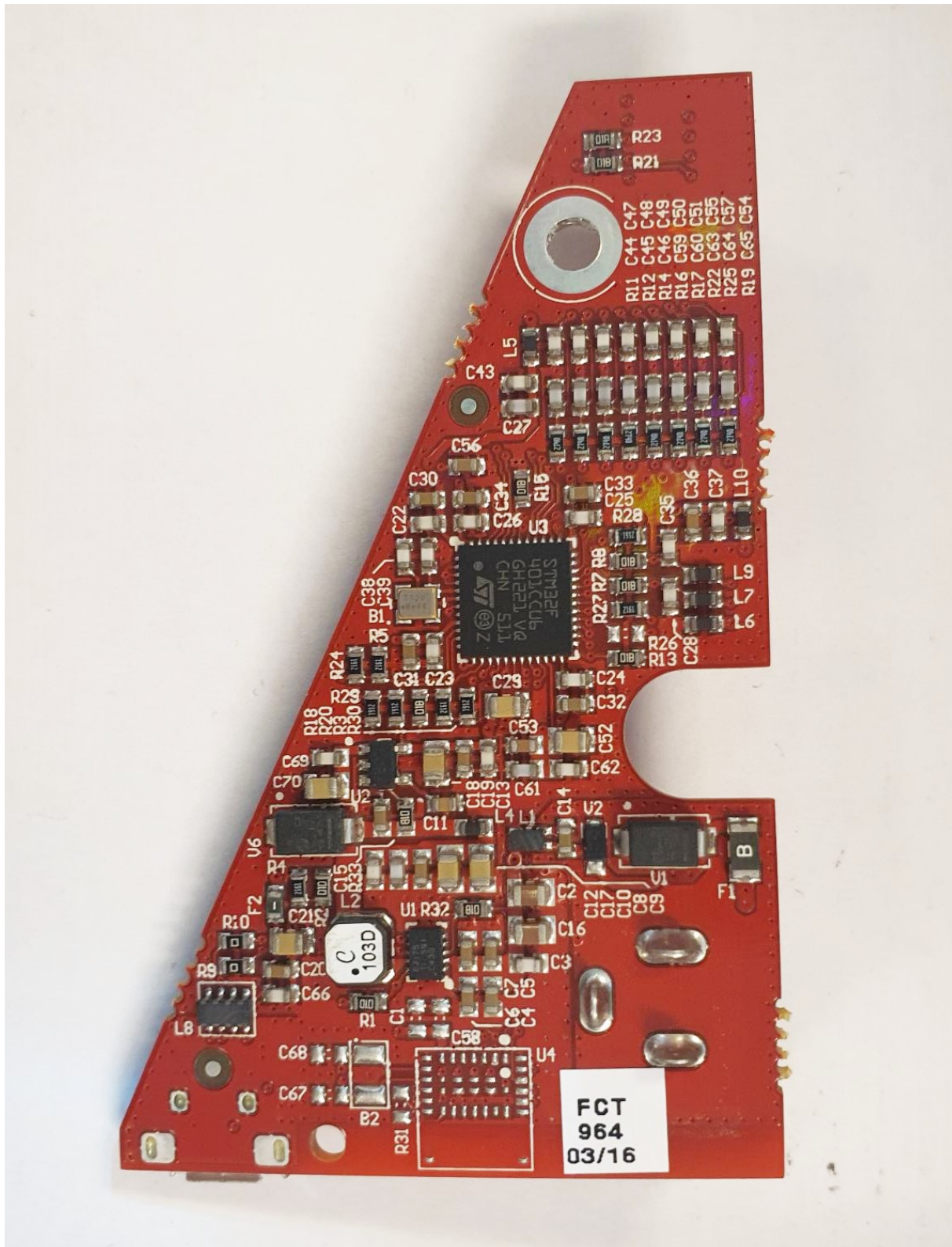
Internal View



Internal View : Cellular PCBA



Internal View : Bridge PCBA

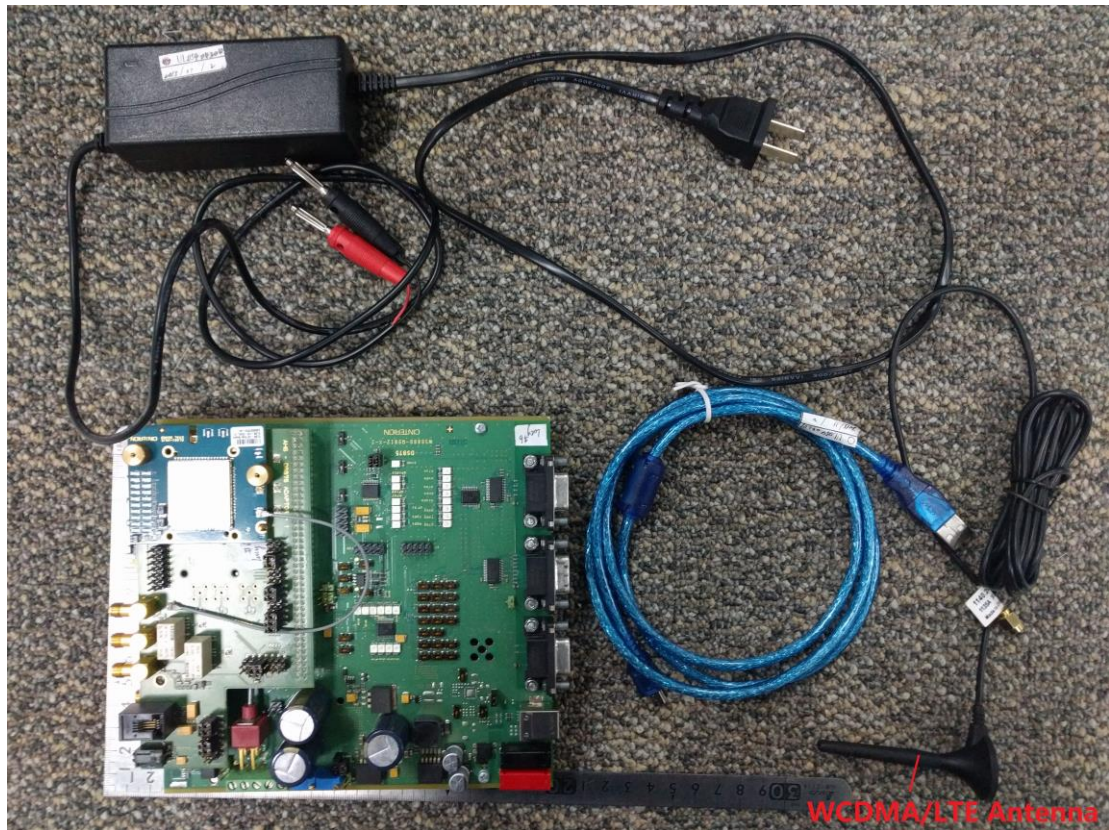


Internal View : Bridge PCBA

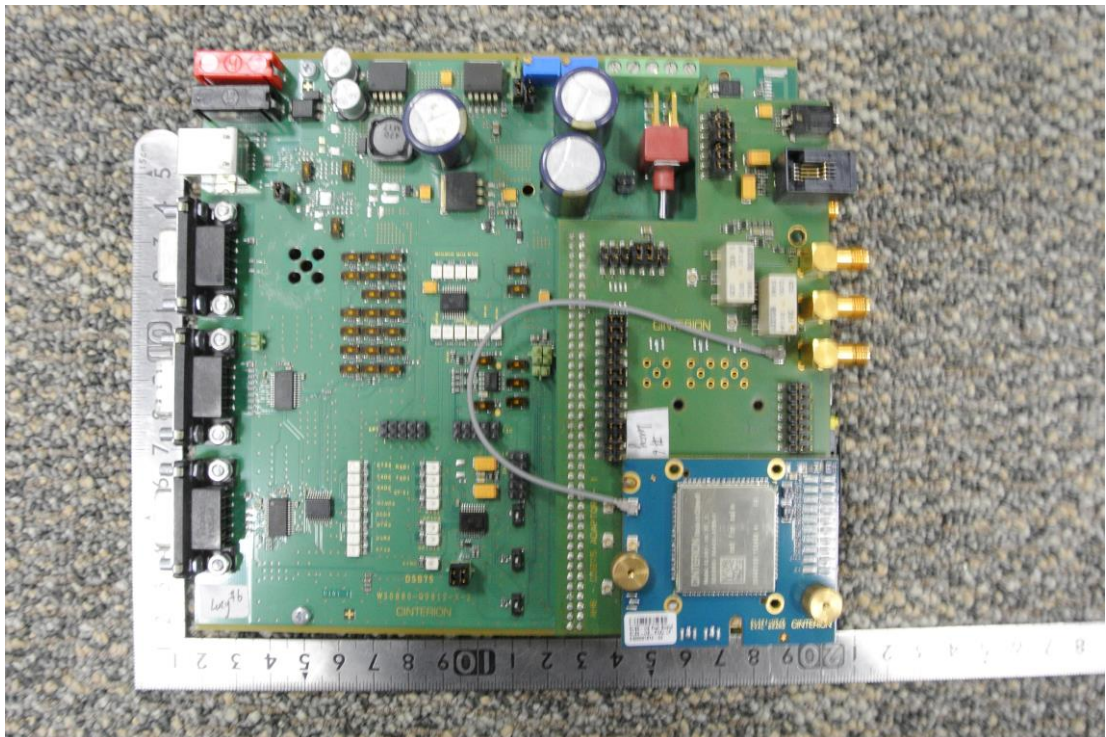


EUT EXTERNAL PHOTOS

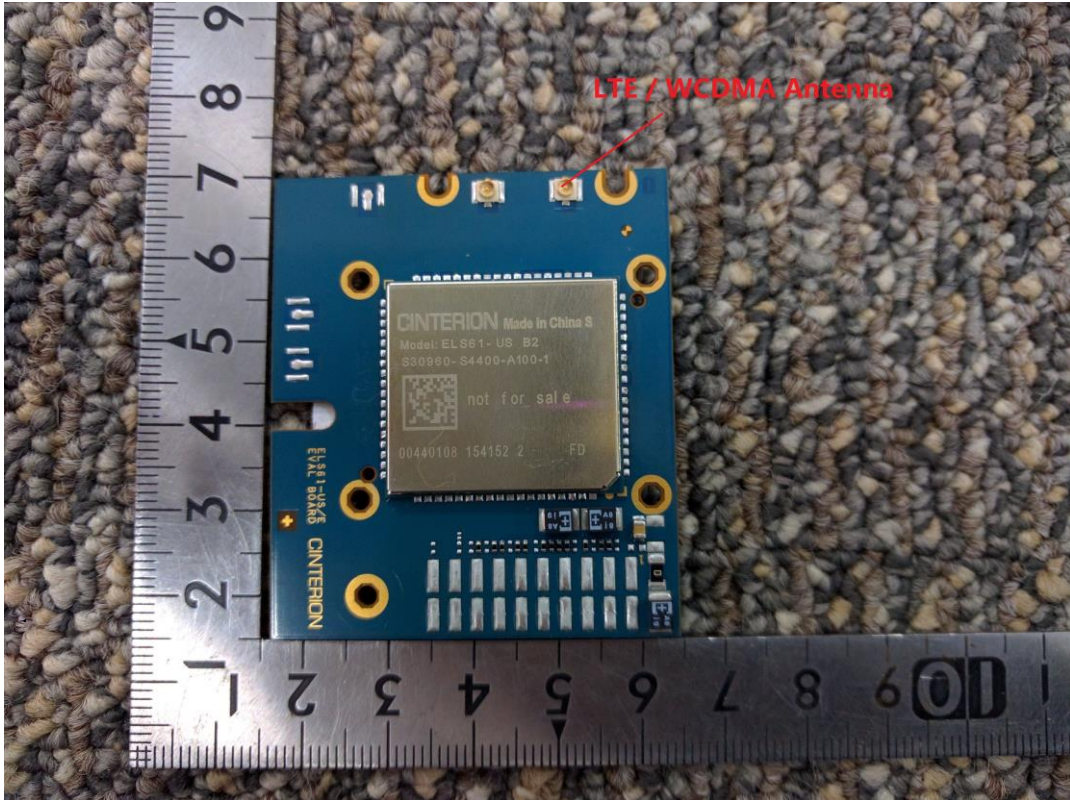
View of EUT-1



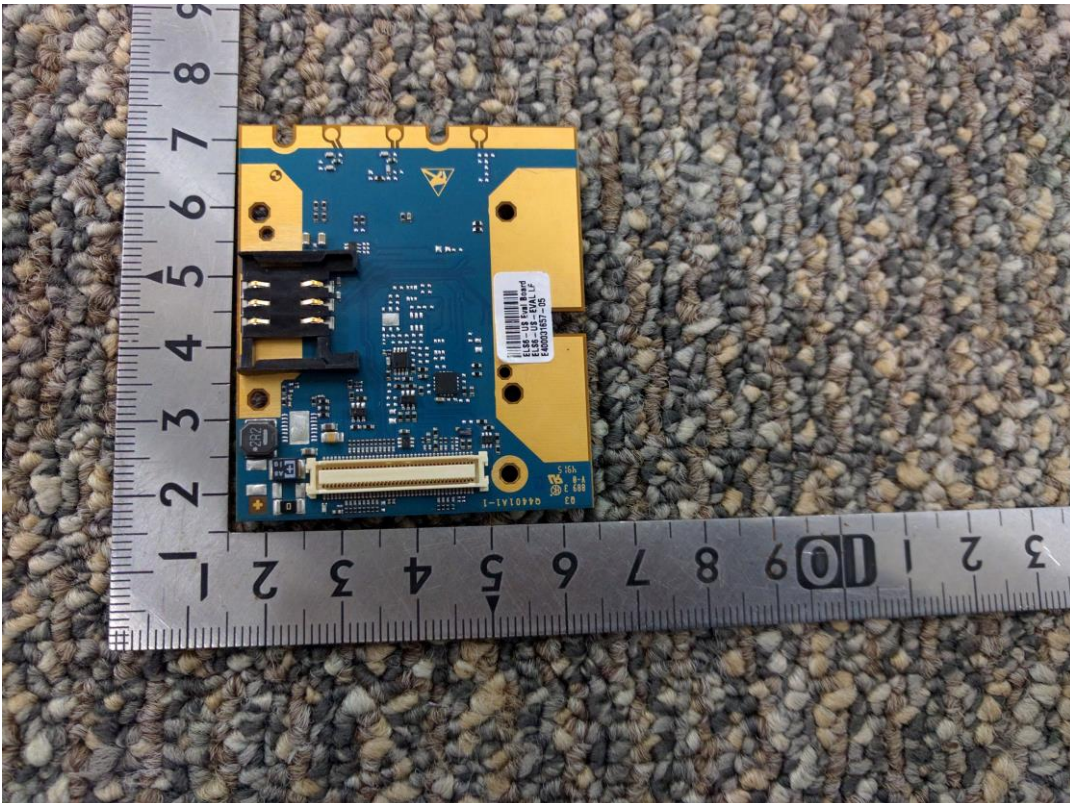
View of EUT-2



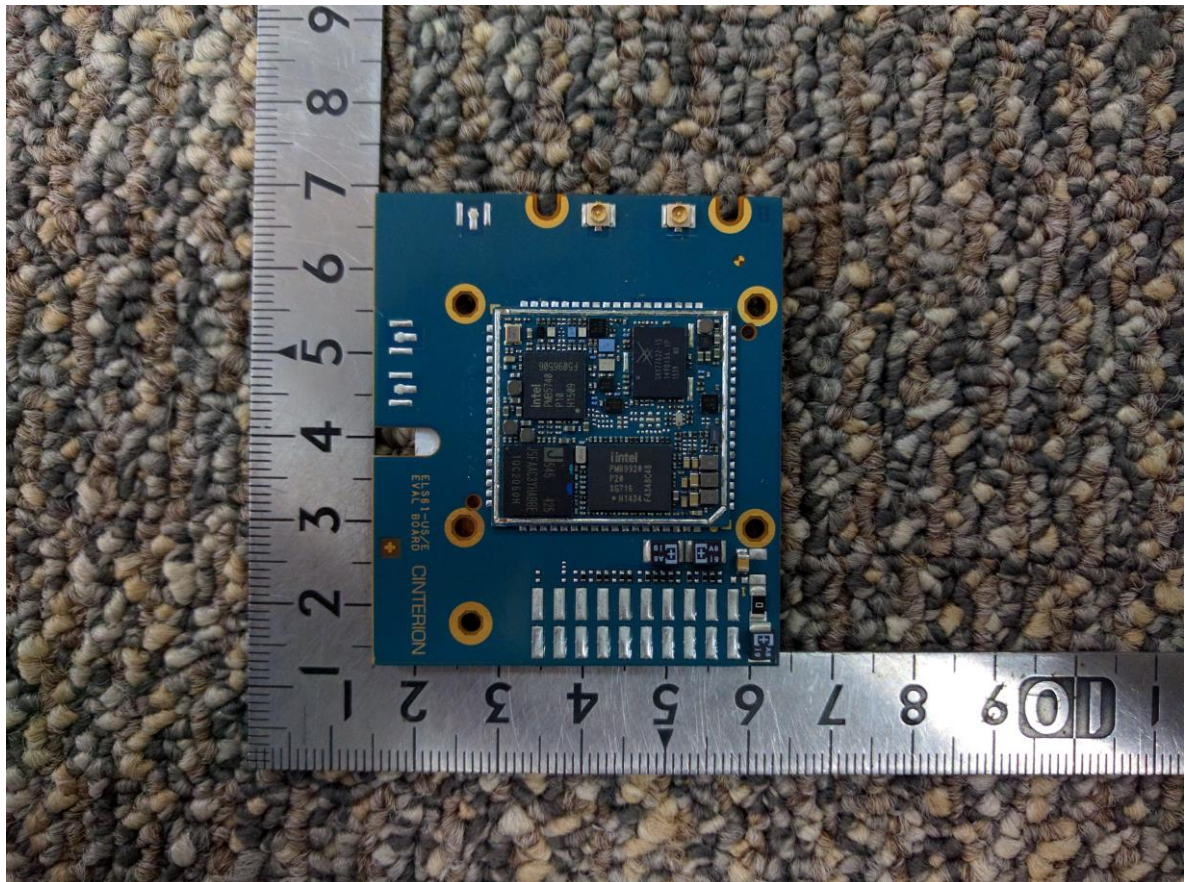
View of EUT-3



View of EUT-4

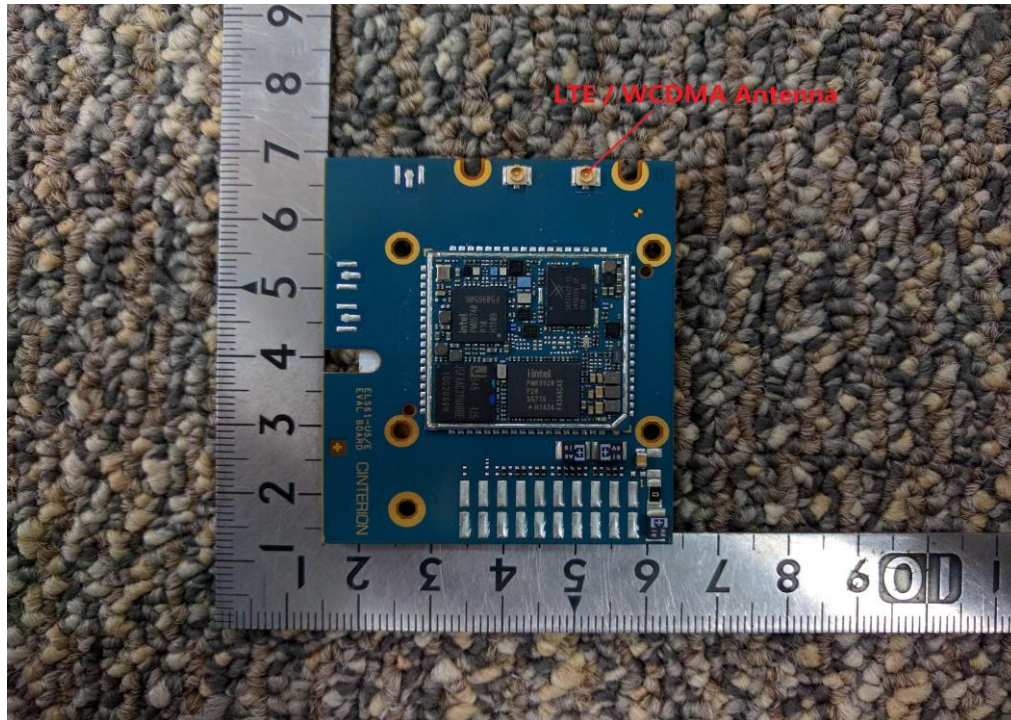


View of EUT-5



EUT INTERNAL PHOTOS

View of EUT-1



View of EUT-2

