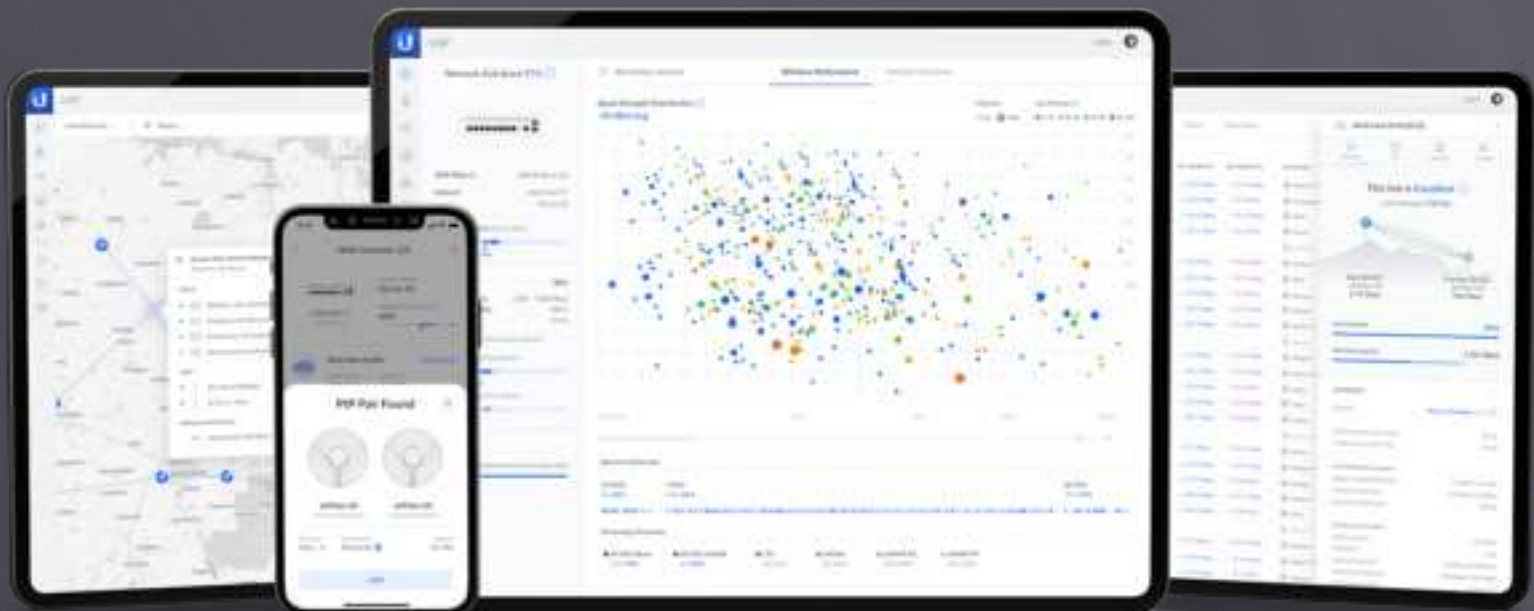


UISP



airFiber 60 XG

4+ km, multi-gigabit, 60 GHz bridge with SFP+ support.

The airFiber 60 XG (AF60 XG) is a 60 GHz point-to-point (PtP) bridge with a built-in, 5 GHz backup radio. The AF60 XG delivers low-interference, low-latency throughput, making it an ideal component for carrier backhaul. It also features integrated GPS and a Bluetooth management radio to simplify setup and configuration.



Mechanical

Dimensions	779 x 664 x 383 mm (30.68 x 26.14 x 15.06")
Weight	Without mount: 8.6 kg (19 lb) With mount: 13 kg (28.7 lb)
Enclosure materials	UV stabilized polycarbonate, steel
Mount material	Galvanized steel
Mount	Precision Alignment Kit (included) Pole compatibility: Ø40-80 mm (Ø1.5-3.15")
Wind loading	422 N at 200 km/h (94.86 lbf at 125 mph)

Hardware

Processor	Quad-Core ARM® Cortex® A72 at 1.6 GHz
Memory	2 GB DDR4
Networking interfaces	(1) 10/100/1000 MbE RJ45 port (1) 1/10G SFP+ port
Button	Factory reset
RF connections	Internal
Max. power consumption	31.2W
Power method	Passive PoE 4-pairs (1, 2+; 3, 6-) (4, 5+; 7, 8-) or 2-pairs (4, 5+; 7, 8-)
Power supply	48VDC, 0.65A Gigabit PoE adapter (included)
Supported voltage range	48VDC ± 10%
Operating temperature	-40 to 55° C (-40 to 131° F)
Operating humidity	5 to 95% noncondensing
Certifications	FCC, IC, CE, terragraph

LEDs

Power	Flashing white: bootup in progress White: not connected to UISP™ console Blue: connected to UISP console
Ethernet	Flashing blue: ethernet activity
GPS	Blue: receiving at least (4) GPS satellite signals
60G	Blue: active connection
5G	Blue: active connection



System

Maximum throughput	5 GHz: 866.6 Mbps 60 GHz: 3.8 Gbps/6 Gbps (with channel bonding enabled)
Maximum range	4 km
Encryption	WPA2-PSK (AES)

Software

OS	airFiber®
Modes	PtP only
Services	UISP, ping watchdog, NTP client, system log
Utilities	Antenna alignment tool, discovery utility, ping, speed test
Management interface	Bluetooth management for easy setup over UISP App WEB UI
Minimum software requirements	Modern Web browser or Android/iOS smartphone

RF

Operating frequency*	57 to 66 GHz <small>* Depends on regulatory region.</small>
GPS	Yes
Channel bandwidth	2160 MHz/4320 MHz (with channel bonding enabled)
Operating channels	58320, 59400, 60480, 61560, 62640, 63720, 64800 MHz* <small>*It depends on the channel bandwidth</small>

Back-Up RF

Operating frequency*	US/CA	U-NII-1	5150 - 5250 MHz
		U-NII-3	5725 - 5850 MHz
	Worldwide		5150 - 5875 MHz
<small>*Depends on regulatory region.</small>			
Channel bandwidth	20/40/80 MHz		



Specifications are subject to change. Ubiquiti products are sold with a limited warranty described at www.ui.com/support/warranty

©2021 Ubiquiti Inc. All rights reserved. Ubiquiti, Ubiquiti Networks, the Ubiquiti U logo, airFiber, and UISP are trademarks or registered trademarks of Ubiquiti Inc. in the United States and in other countries. Android is a trademark of Google LLC. All other trademarks are the property of their respective owners.