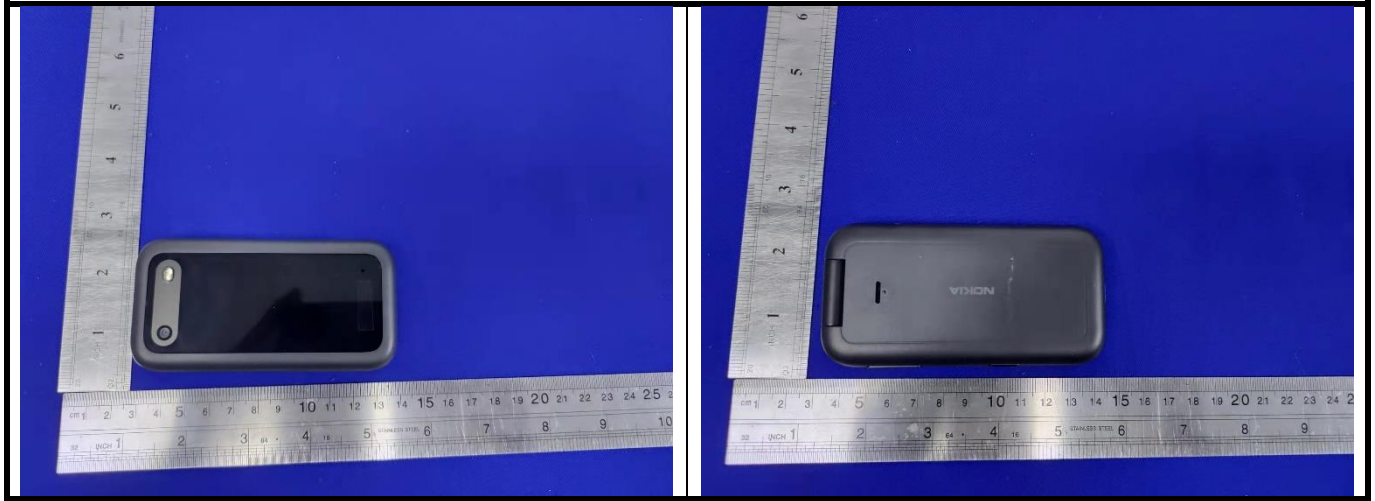
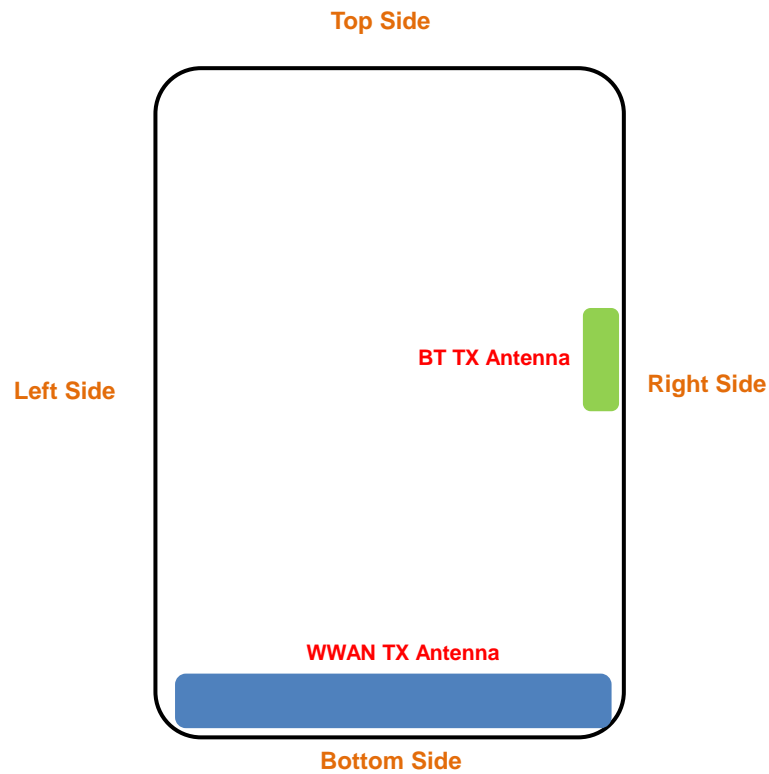


FCC SAR Test Report

<Photographs of EUT>



<Antenna Location>



<EUT Front View>

The separation distance for antenna to edge:

Antenna	To Left Side (mm)	To Right Side (mm)	To Top Side (mm)	To Bottom Side (mm)
WWAN	5	0	93	0
BT	50	0	46	46

FCC SAR Test Report

<Photographs of SAR Setup>



Right Cheek



Left Cheek



Right Tilted



Left Tilted



Front Face of EUT with 1.5 cm Gap



Rear Face of EUT with 1.5 cm Gap