

## 115V Refrigerated Wiring Diagram with Alpha/Numeric Display (Enhanced only)

DSSBF8SP

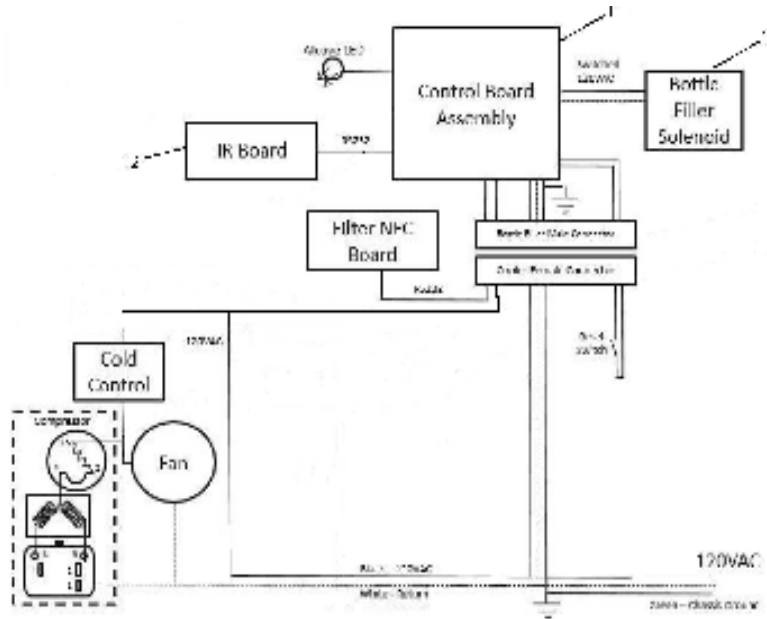


Fig. 1

## 115V Refrigerated Wiring Diagram with Alpha/Numeric Display (Connected)

DSSBF8SP-W1

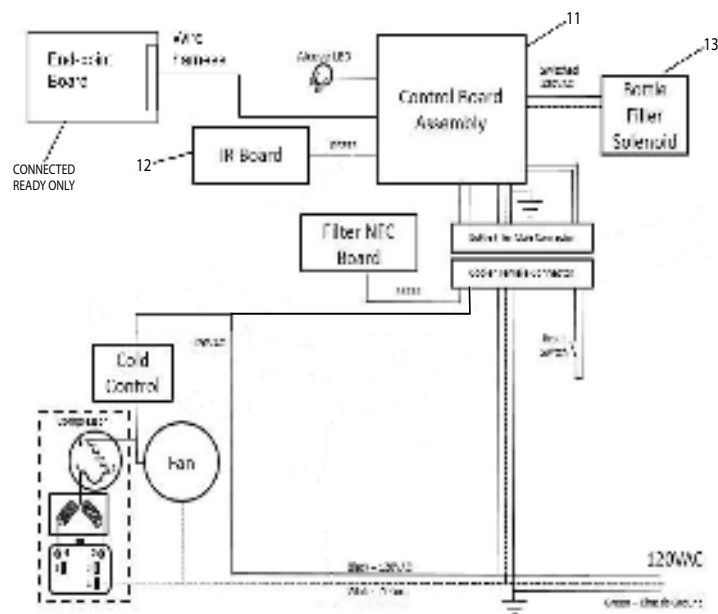


Fig. 2

**⚠ WARNING**

- **INGESTION HAZARD:** This product contains a button cell or coin battery.
- **DEATH** or serious injury can occur if ingested.
- A swallowed button cell or coin battery can cause **Internal Chemical Burns** in as little as **2 hours**.
- **KEEP** new and used batteries **OUT OF REACH** of **CHILDREN**
- **Seek immediate medical attention** if a battery is suspected to be swallowed or inserted inside any part of the body.





Fig. 3

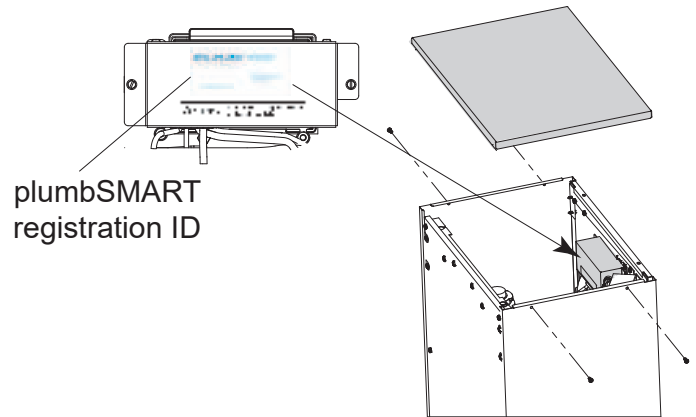


Fig. 4



Scan for trouble shooting and to sign up for auto replenishment of authentic Elkay filters.

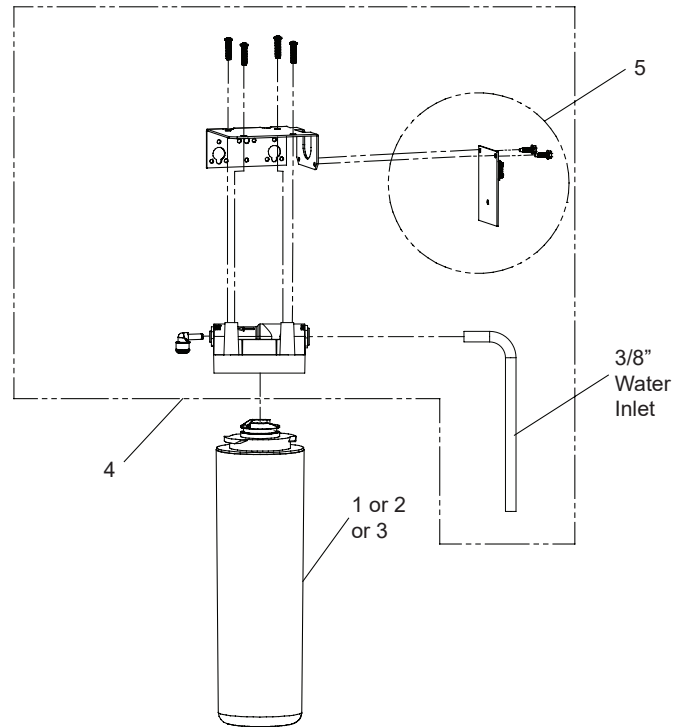


Fig. 5

#### OPERATION OF QUICK CONNECT FITTINGS

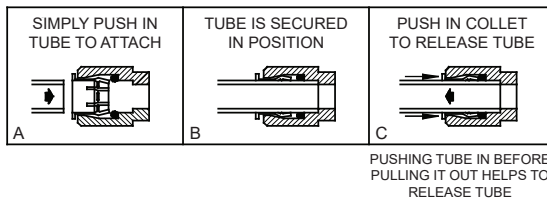


Fig. 6

#### WATERSENTRY® Filter Detail

| WATERSENTRY® FILTER PARTS LIST |            |  |
|--------------------------------|------------|--|
| ITEM NO.                       | PART NO.   | DESCRIPTION  |
| 1                              | 51300C     | Filter 3000 Gal (standard)   |
| 2                              | 51600C     | Filter 6000 Gal (high capacity)  |
| 3                              | 71300C     | Filter 2250 Gal (PFOA/PFAS)  |
| 4                              | 1000005214 | Kit - Filter Head Fittings includes John Guest Fittings & 3/8" Elbow Filter Bracket/Screws |
| 5                              | 1000004409 | Kit - NFC Board/Cover  |

# Programming Instruction

Depress Button for 3 seconds to activate main menu - release

Cycles thru main menu items 2 seconds each for 2 cycles then exits menu unless selected

Cycles thru sub menu items 2 seconds each for 2 cycles then returns to main menu unless selected

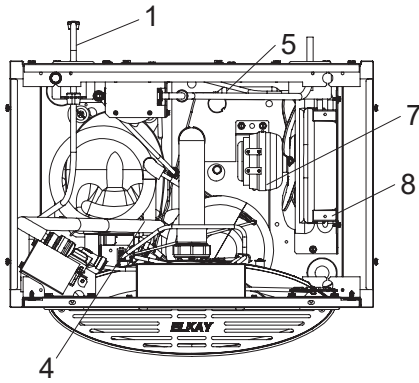
Selections are saved when the menu is exited

| Top level | Action    | Sub Menu 1                               | Action    | Sub Menu/action   | Action | Sub Menu/<br>action | Action | Sub Menu/<br>action | Notes  | End Action                        |
|-----------|-----------|--|-----------|---|--------|---------------------|--------|---------------------|--|-----------------------------------|
| Info      | Momentary | Scrolls through all the settings on unit |           |   |        |                     |        |                     |  | Returns to Main Menu              |
| Info      | Momentary | Flashes error code                       |           |   |        |                     |        |                     |  | Returns to Main Menu              |
| Set time  | Momentary |  |           |   |        |                     |        |                     |  | Drops to next level when selected |
|           |           | Day (Sunday-Saturday                     | Momentary |   |        |                     |        |                     | Use push button to select the day on the display   | Drops to next level when selected |
|           |           | AM/PM                                    | Momentary |   |        |                     |        |                     | Use push button to select AM or PM   | Drops to next level when selected |
|           |           | Hour (12 hour)                           | Momentary |   |        |                     |        |                     | Use push button to select Hour   | Drops to next level when selected |
|           |           | Min 0-69 in 5 minute increments          | Momentary |   |        |                     |        |                     | Use push button to select closest minute   | Returns to Main Menu              |
| Filter    | Momentary |  |           |   |        |                     |        |                     |  | Drops to next level when selected |
|           |           | No                                       | Momentary | Turn off filter status and errors   |        |                     |        |                     | No Filter unit - Error codes related to filter status turned off   | Returns to Main Menu              |
|           |           | Yes                                      | Momentary | Default setting - Turn on filter status and errors  |        |                     |        |                     | Filter status has default ON / Default has read write to filter, LED status display, filter error capability | Returns to Main Menu              |
| Refrig    | Momentary |  |           |   |        |                     |        |                     |  | Drops to next level when selected |
|           |           | No                                       | Momentary | Disables E/S relay sets bottle fill time to 1.5gpm  |        |                     |        |                     | Refrigeration off  | Returns to Main Menu              |
|           |           | Yes                                      | Momentary | Default setting - Enables E/S relay - sets time to 1.1gpm   |        |                     |        |                     | Refrigeration on   | Returns to Main Menu              |
| Range     | Momentary |  |           |   |        |                     |        |                     | The lower the number, the closer to the sensor the bottle needs to be to activate                            | Drops to next level when selected |
|           |           | 1-10                                     | Momentary | Default setting 5 - Adjusts distance from sensor the bottle needs to be before turning before turning on or off the bottle filler |        |                     |        |                     |  | Returns to Main Menu              |
| B-Light   | Momentary |  |           |   |        |                     |        |                     | The settings are for the brightness of the display and night light   | Drops to next level when selected |
|           |           | 25%                                      | Momentary |   |        |                     |        |                     |  | Returns to Main Menu              |
|           |           | 50%                                      | Momentary |   |        |                     |        |                     |  | Returns to Main Menu              |
|           |           | 75%                                      | Momentary | Default Setting   |        |                     |        |                     |  | Returns to Main Menu              |
|           |           | 100%                                     | Momentary |   |        |                     |        |                     |  | Returns to Main Menu              |
| EnerSave  |           | Unavailable                              |           |   |        |                     |        |                     |  |                                   |
|           |           |  |           |   |        |                     |        |                     |  |                                   |
|           |           |  |           |   |        |                     |        |                     |  |                                   |
|           |           |  |           |   |        |                     |        |                     |  |                                   |
|           |           |  |           |   |        |                     |        |                     |  |                                   |
|           |           |  |           |   |        |                     |        |                     |  |                                   |
|           |           |  |           |   |        |                     |        |                     |  |                                   |
|           |           |  |           |   |        |                     |        |                     |  |                                   |
|           |           |  |           |   |        |                     |        |                     |  |                                   |

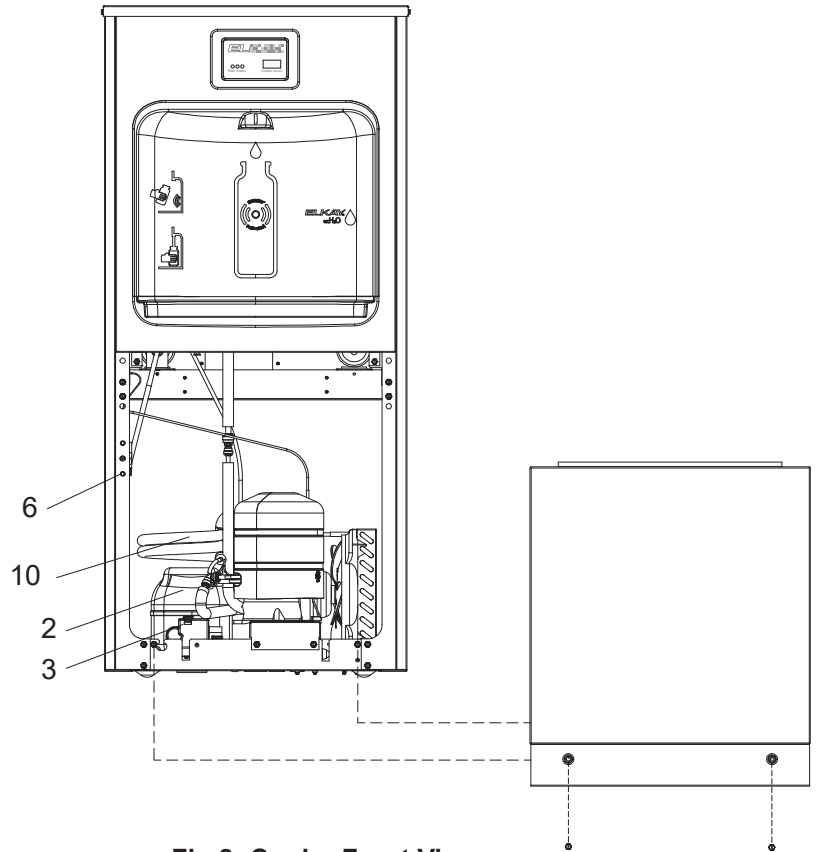
## Enhanced EZH2O Error Codes

| Error Code  | Error Description              | Corrective Action   |
|-------------|--------------------------------|---|
|             | Bottle filler area obstructed  | <ul style="list-style-type: none"> <li>• Remove obstruction.</li> <li>• Clean lens on IR sensor</li> <li>• Unplug unit for at least 30 seconds and restart</li> <li>• If error repeats, replace IR sensor</li> </ul>  |
| E013        | Missing or Incompatible Filter | <ul style="list-style-type: none"> <li>• Check that filter is installed correctly (label facing forward, white tag facing back)</li> <li>• Unplug unit for at least 30 seconds and restart</li> <li>• Replace filter</li> <li>• Replace filter head assembly with repair kit</li> <li>• If error repeats, contact certified service professional</li> </ul> |
| E013 & E014 | Missing NFC Board              | <ul style="list-style-type: none"> <li>• Unplug unit for at least 30 seconds and restart</li> <li>• Verify cable connector is plugged into NFC board on filter head assembly</li> <li>• Replace filter head assembly with repair kit</li> <li>• If error repeats, contact certified service professional</li> </ul>   |

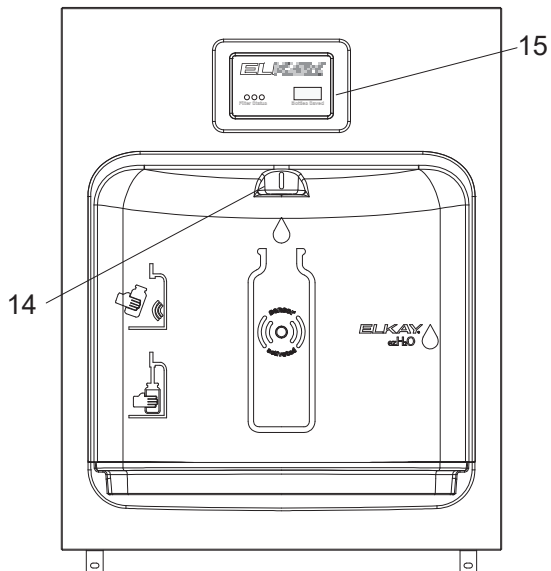
**Note:** Danger! Electric shock hazard. Disconnect power before servicing unit.



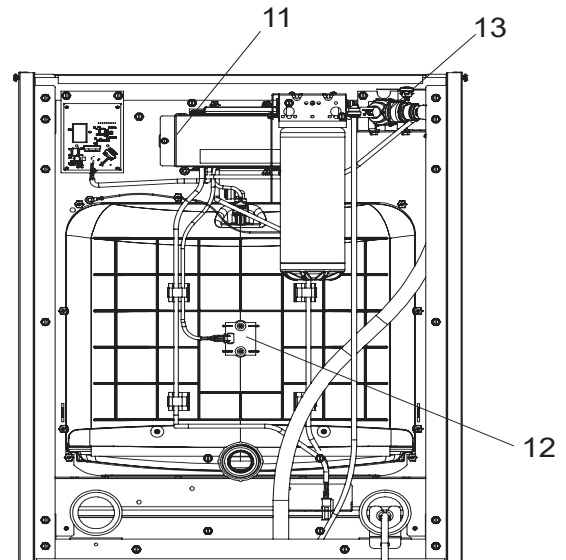
**Fig 7: Cooler Top View**



**Fig 8: Cooler Front View**



**Fig 9: Front View with Aerator**



**Fig 10: Rear View**

| 115V PARTS LIST |            |   |
|-----------------|------------|---|
| ITEM NO.        | PART NO.   | DESCRIPTION                                 |
| 1               | 36287C     | Power Cord                                  |
| 2               | *36322C    | Compressor Serv. Pak EMIS70HHR              |
| 3               | 0000000238 | Kit - Electricals /OL/Relay/Cvr             |
| 4               | 56092C     | Tubing - Poly (Cut To Length)               |
| 5               | 66703C     | Drier                                       |
| 6               | 98773C     | Kit - Cold Control/Screws                   |
| 7               | 98775C     | Kit - Fan Motor Assy/Blade/Motor/Shroud/Nut |
| 8               | 98776C     | Kit - Condenser/Drier                       |
| NS              | 98777C     | Kit - Compr Mtg Hdwe                        |
| 10              | 98778C     | Kit - 66576C Heatx/Drier                    |
| 11              | 1000004544 | Alpha Numeric LED Board (Enhanced Only)     |
|                 | 2000000832 | Alpha Numeric LED Board (Connected Only)    |
| 12              | 1000005219 | Kit - IR Sensor K+                          |
| 13              | 1000004573 | Kit - Solenoid 120V (BF)                    |
| 14              | 98546C     | Kit - Aerator Replacement                   |
| 15              | 1000005077 | Nameplate - Elkay Filtered                  |
| NS              | 98549C     | Kit - Hardware & Waterway (BF)              |
| NS              | 1000004546 | Harness - Bottle Filler                     |
| NS              | 1000004549 | Harness - LED/IR Board                      |
| NS              | 1000004547 | Harness - Cooler                            |
| NS              | 1100000025 | Endpoint Board Service Kit                  |

NS = Not Shown

**\*INCLUDES RELAY & OVERLOAD. IF  
UNDER WARRANTY, REPLACE WITH SAME  
COMPRESSOR USED IN ORIGINAL ASSEMBLY.**  
**NOTE:** All correspondence pertaining to any of the  
above water coolers or orders for repair parts **MUST**  
include Model No. and Serial No. of cooler, name  
and part number of replacement part.

## LIMITED PRODUCT WARRANTY SOFTWARE LICENSE

**FIRST YEAR** - The Manufacturer warrants every cooler, bottle filling station, packaged water cooler, fountain and accessory to be free from defects in materials and workmanship under normal use for one (1) year from date of install or eighteen (18) months from date of shipment from factory, whichever occurs first. The Manufacturer warrants every LK44 Series outdoor tubular fountain and bottle filling station to be free from defects in materials and workmanship under normal use for five (5) years from the date of install or sixty-six (66) months from date of shipment from factory, whichever occurs first. This extended warranty does not apply to freeze resistant assemblies.

**SECOND THROUGH FIFTH YEARS** - The Manufacturer warrants the compressor and hermetically sealed refrigeration system, including cooling coils or tank assembly when part of the hermetically sealed refrigeration system, to be free from defects in material and workmanship under normal use for an additional four (4) years from the end of the one (1) year period described above. Packaged water cooler are not subject to the additional four (4) year warranty when used in chilled water commercial/industrial applications other than for potable water.

**INSTALLATION AND OPERATION** - The foregoing Limited Warranty applies only when the product is installed and operated in accordance with the Manufacturer's written instructions included with each unit. These products are designed to operate on 20 psi to 105 psi supply line pressure. Non-filtered Bi-level units require a minimum of 40 psi supply line pressure to ensure adequate stream height from each bubbler when activated simultaneously. Bi-level filtered models, regardless of supply line pressure, cannot provide adequate stream height from each bubbler when activated simultaneously. The Limited Warranty does not apply to products, which on examination by the Manufacturer or its agent, are found to have been subjected to accident, alteration, abuse, misuse, misapplications, corrosive type atmospheres, or abnormal use.

**OWNER'S OBLIGATIONS** - It is the owner's obligation to pay for any repairs or maintenance not covered by the Limited Warranty, including service calls related to non warranty issues. Any appearance imperfections are to be noted at time of installation, and the installer or the supplier notified without delay. In the case of products located within the United States or Canada, it is the owner's responsibility to allow access to the unit for the authorized service center to repair on site and/or remove unit from wall to repair at the authorized service center's discretion. In the case of products located outside the United States or Canada, the owner is to return any part for which replacement is sought to the closest authorized service center or to the manufacturer's factory repair department.

**MANUFACTURER'S OBLIGATIONS** - When the product is located within the United States or Canada, the Manufacturer's obligation under this Limited Warranty is limited to the labor and parts to repair or replace any part which is expressly covered by this Limited Warranty at one of its authorized service centers or at its factory repair department. The warranty applicable to any replacement unit shall be the remaining warranty period on the replaced unit. The Manufacturer's obligation also includes cost of outbound freight (but not express freight) of the part or parts from an authorized service center or the factory repair department, but only if the Manufacturer determines that the part or parts, and the purported defect or defects, are covered by this Limited Warranty.

When the product is located outside the United States or Canada, the Manufacturer's obligation under this Limited Warranty is limited to providing a replacement part for any part expressly covered by this Limited Warranty which, upon examination by the Manufacturer or its agent, is found to be defective, but does not include any obligation to provide labor or to pay labor costs incurred in connection with the replacement. The Manufacturer's obligations also include cost of outbound freight (but not express freight) of the part or parts from the factory repair department to (but not beyond) the port in the United States from which the part or parts are shipped to the ultimate destination, but only if the Manufacturer determines that the part or parts, and the purported defect or defects, are covered by this Limited Warranty.

**WHAT WARRANTY DOES NOT COVER** - This Limited Warranty does not include payment for any field labor to provide for normal maintenance including adjustments such as water stream height, water temperature or electric eye sensitivity. The water system and regulating valve are not covered by this Limited Warranty if they become inoperative due to liming, sand or similar residue. This Limited Warranty is voided if repairs are made by an unauthorized party or the serial number data plate is removed or defaced. Normal deterioration of finish due to use and exposure is not covered by this Limited Warranty. Corrosion of materials is also not covered by this Limited Warranty. The Manufacturer is not liable for repairs, whether cosmetic or structural, to walls where cooler, bottle filler, fountain and packaged water coolers are built into the wall. If inlet pressure is above 105 psi, a pressure regulator must be installed in the supply line. Any damage caused by reason of connecting this water cooler, bottle filler, fountain or packaged water cooler to supply line pressures lower than 20 psi or higher than 105 psi is not covered by this warranty.

**PERSONS ENTITLED TO BENEFIT OF WARRANTY** - This Limited Warranty is applicable only to (i) purchasers who purchase the product for the resale in the ordinary course of business, and (ii) the first person who purchases the product other than resale.

**SOFTWARE LICENSE PROVISIONS** - To the extent the product includes embedded software, the owner and those using the product are granted a restricted, nonexclusive license to use such embedded software. Title to the embedded software shall at times remain with the embedded software licensor. The owner and those using the product shall not remove or alter notices, legends or trademarks contained in the embedded software, nor shall they translate, reverse engineer, decompile or disassemble the embedded software except to the extent applicable law specifically prohibits this restriction. The embedded software is provided "as is" and any warranty offered herein is by or through the Manufacturer. Further information concerning this license of embedded software is available from the Manufacturer.

THIS LIMITED WARRANTY IS IN LIEU OF ALL OTHER EXPRESS WARRANTIES, EXPRESSED OR IMPLIED, ARISING BY LAW OR OTHERWISE, INCLUDING WITHOUT LIMITATION, THE IMPLIED WARRANTIES OF MERCHANTABILITY AND FITNESS FOR A PARTICULAR PURPOSE. EXCEPT AS EXPRESSLY PROVIDED HEREIN, THE MANUFACTURER MAKES NO WARRANTIES, EXPRESSED OR IMPLIED, ARISING BY LAW OR OTHERWISE, INCLUDING WITHOUT LIMITATION, THE IMPLIED WARRANTIES OF MERCHANTABILITY AND FITNESS FOR A PARTICULAR PURPOSE, TO ANY PERSON. THIS WARRANTY MAY NOT BE ALTERED, VARIED, OR EXTENDED, EXCEPT BY A WRITTEN INSTRUMENT EXECUTED BY THE MANUFACTURER. THE REMEDY OF REPAIR OR, WHERE APPLICABLE, REPLACEMENT AS PROVIDED UNDER THIS LIMITED WARRANTY IS EXCLUSIVE. IN NO EVENT SHALL THE MANUFACTURER BE LIABLE FOR ANY CONSEQUENTIAL OR INCIDENTAL DAMAGES TO ANY PERSON, WHETHER OR NOT OCCASIONED BY NEGLIGENCE OF THE MANUFACTURER, INCLUDING WITHOUT LIMITATION DAMAGES FOR LOSS OF USE, COSTS OR SUBSTITUTION, PROPERTY DAMAGE, OR OTHER MONETARY LOSS.

This Limited Warranty gives specific legal rights and in some states of the United States there may be other rights which vary from state to state.

DATE OF INSTALLATION \_\_\_\_\_

SERIAL NUMBER \_\_\_\_\_  
(To Be Filled in By Installer)

Form to be left with the owner by the installer.

**FCC COMPLIANCE STATEMENT**

**CAUTION:** Changes or modifications not expressly approved could void your authority to use this equipment

This device complies with Part 15 of the FCC Rules. Operation to the following two conditions: (1) This device may not cause harmful interference, and (2) this device must accept any interference received, including interference that may cause undesired operation

Note: This equipment has been tested and found to comply with the limits for a Class B digital device, pursuant to part 15 of the FCC Rules. These limits are designed to provide reasonable protection against harmful interference in a residential installation. This equipment generates, uses and can radiate radio frequency energy and, if not installed and used in accordance with the instructions, may cause harmful interference to radio communications. However, there is no guarantee that interference will not occur in a particular installation. If this equipment does cause harmful interference to radio or television reception, which can be determined by turning the equipment off and on, the user is encouraged to try to correct the interference by one or more of the following measures:

- Reorient or relocate the receiving antenna.
- Increase the separation between the equipment and receiver.
- Connect the equipment into an outlet on a circuit different from that to which the receiver is connected.
- Consult the dealer or an experienced radio/TV technician for help.

The device shall be used in such a manner that the potential for human contact normal operation is minimized. This equipment complies with FCC radiation exposure limits set forth for an uncontrolled environment. This equipment should be installed and operated with a minimum distance of 20cm between the radiator and your body. This device and its antenna(s) must not be co-located or operating in conjunction with any other antenna or transmitter.

**INDUSTRY CANADA STATEMENT**

This device complies with Industry Canada license-exempt RSS standard(s). Operation is subject to the following two conditions: (1) this device may not cause interference, and (2) this device must accept any interference, including interference that may cause undesired operation of the device.

Le présent appareil est conforme aux CNR d'Industrie Canada applicables aux appareils radio exempts de licence. L'exploitation est autorisée aux deux conditions suivantes : (1) l'appareil ne doit pas produire de brouillage, et (2) l'utilisateur de l'appareil doit accepter tout brouillage radioélectrique subi, même si le brouillage est susceptible d'en compromettre le fonctionnement.

The device shall be used in such a manner that the potential for human contact normal operation is minimized. This equipment complies with RSS-102 radiation exposure limits. This equipment should be installed and operated with a minimum distance of 20 cm between the radiator and your body. This device and its antenna(s) must not be co-located or operating in conjunction with any other antenna or transmitter.

Le dispositif doit être utilisé de manière à minimiser le potentiel de fonctionnement normal par contact humain. Cet équipement est conforme aux limites d'exposition au rayonnement RSS-102. Cet équipement doit être installé et utilisé avec une distance minimale de 20 cm entre le radiateur et votre corps. Cet appareil et son (ses) antenne (s) ne doivent pas être co-localisés ou utilisés conjointement avec une autre antenne ou un autre émetteur.

PRINTED IN U.S.A.

**FOR PARTS, CONTACT YOUR LOCAL DISTRIBUTOR OR CALL 1.800.834.4816**

**REPAIR SERVICE INFORMATION TOLL FREE NUMBER 1.800.260.6640**

**ELKAY MANUFACTURING COMPANY • 1333 BUTTERFIELD ROAD • DOWNERS GROVE, IL 60515 • 630.574.8484 • [www.elkay.com](http://www.elkay.com)**