

封面

封底

Table of Contents	
INTRODUCTION.....	1
PACKAGE CONTENTS.....	1
PRODUCT OVERVIEW.....	2
INSTALLING YOUR DEVICE.....	3
CONNECT DEVICES TO THE TUYA SMART APP.....	5
CONNECT TO THE TUYA APP.....	6
Bluetooth Connection (Recommend).....	6
NOTIFICATION SETTINGS.....	7
APP OPERATION.....	7
Arm.....	8
Disarm.....	8
Home Arm.....	9
TESTING THE DEVICE.....	13
TROUBLESHOOTING.....	13
USING THE WATER LEAK DETECTOR.....	14
SETTING UP THE GATEWAY.....	17
Flat Table Placement Wall Mount.....	17
GATEWAY KEY OPERATION.....	18
Gateway charging or power off.....	19
ADD OR DELETE WATER LEAK DETECTORS.....	19
Low Battery.....	20
SPECIFICATION.....	21

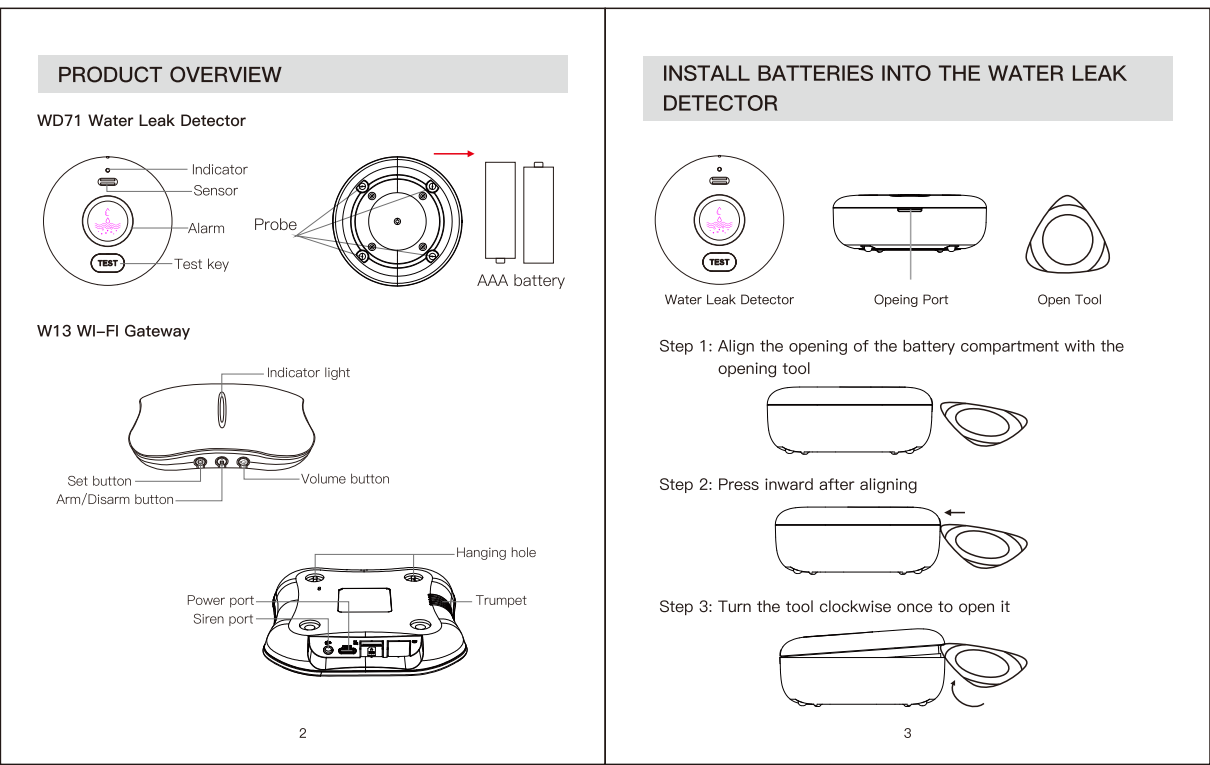
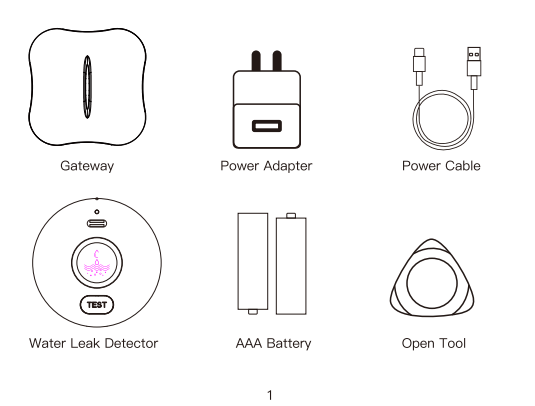
INTRODUCTION

The Tuya Smart App may be used to:

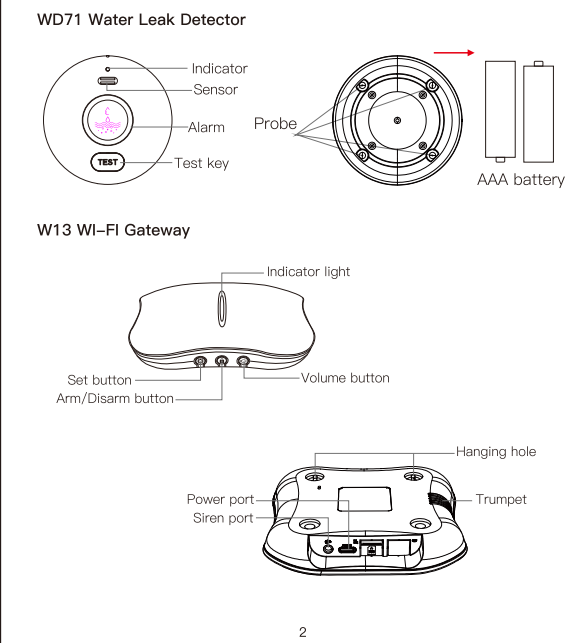
- Monitor and control the W13 Wi-Fi Gateway.
- Connect the WD71 Water Leak Detector to the Gateway.

NOTE: The water detectors are paired with the gateway in advance. To begin setup, place batteries in the water leak detector and connect the gateway to a 2.4G Wi-Fi network.

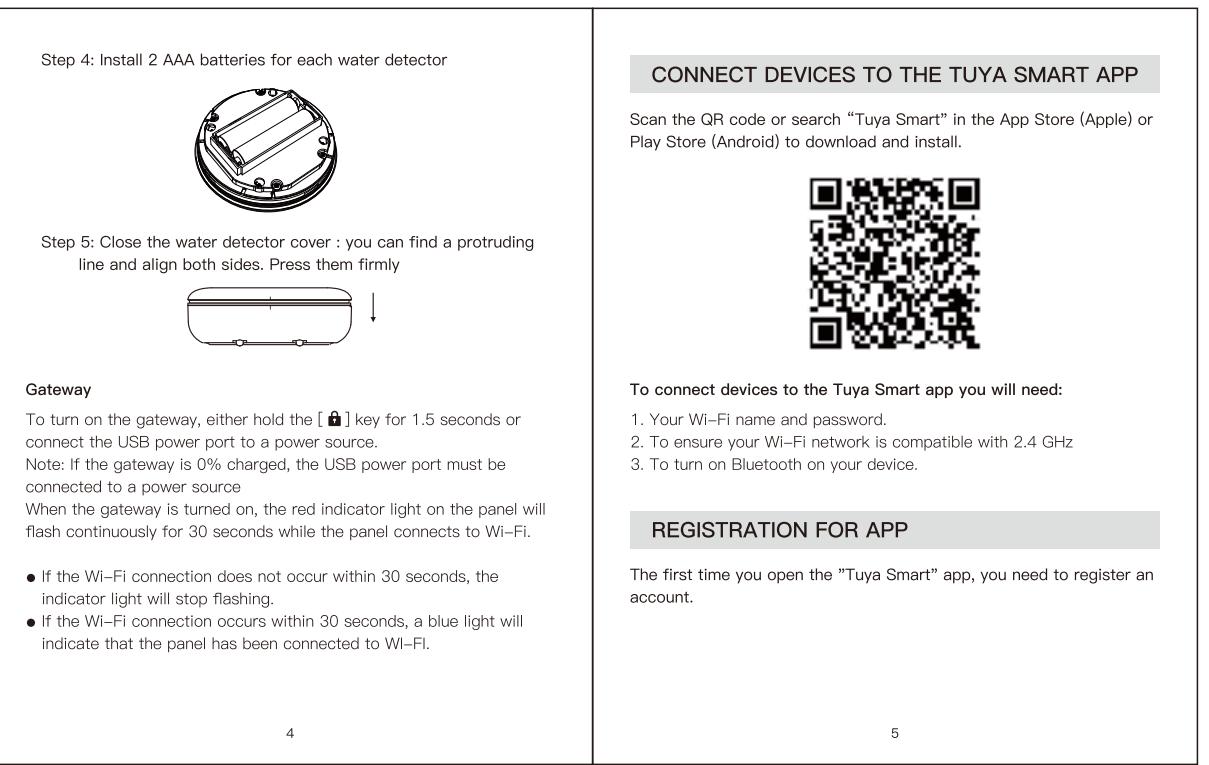
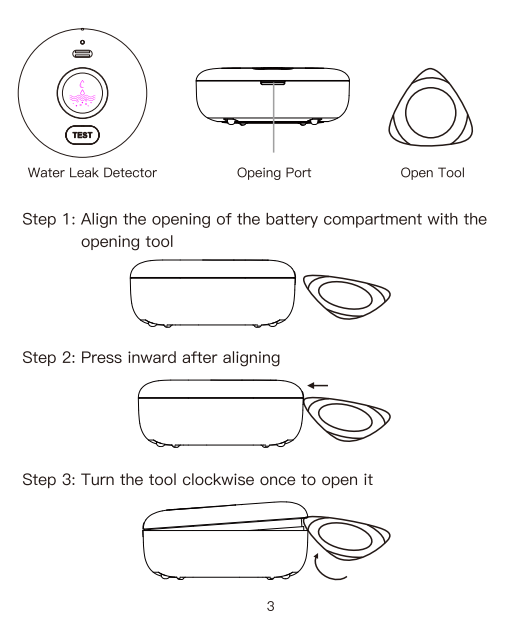
PACKAGE CONTENTS



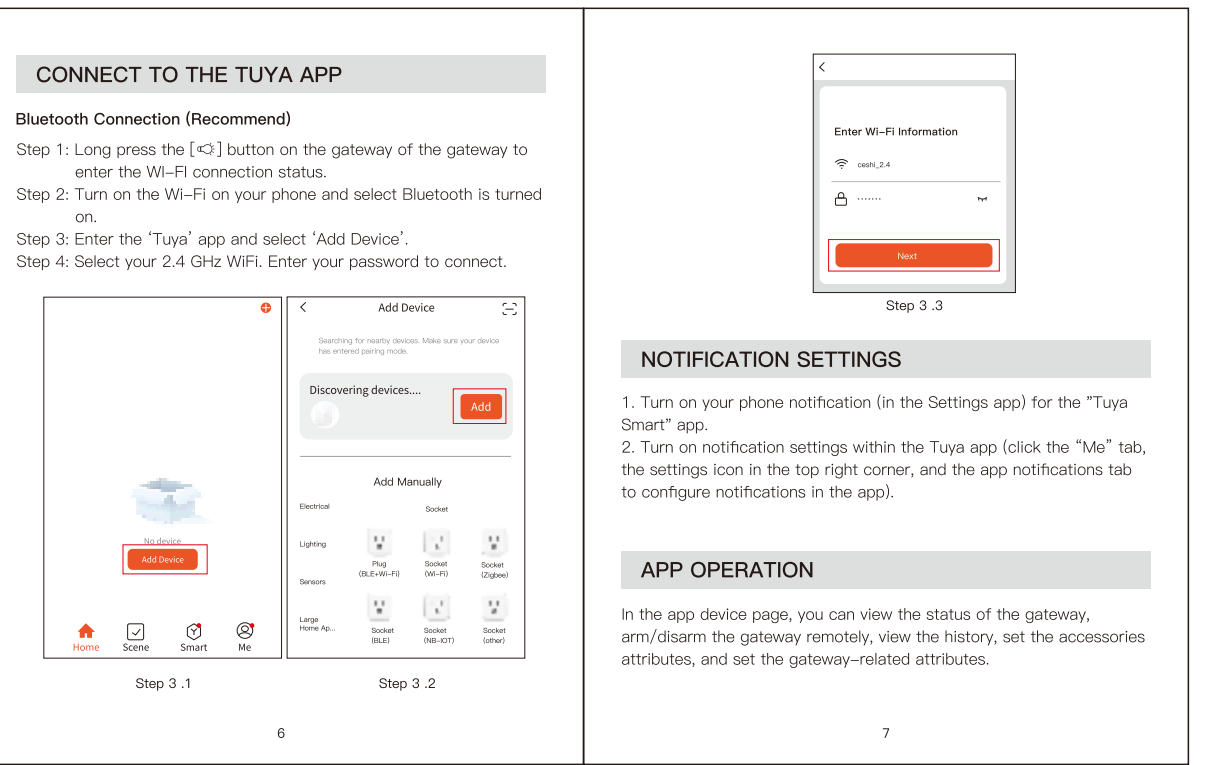
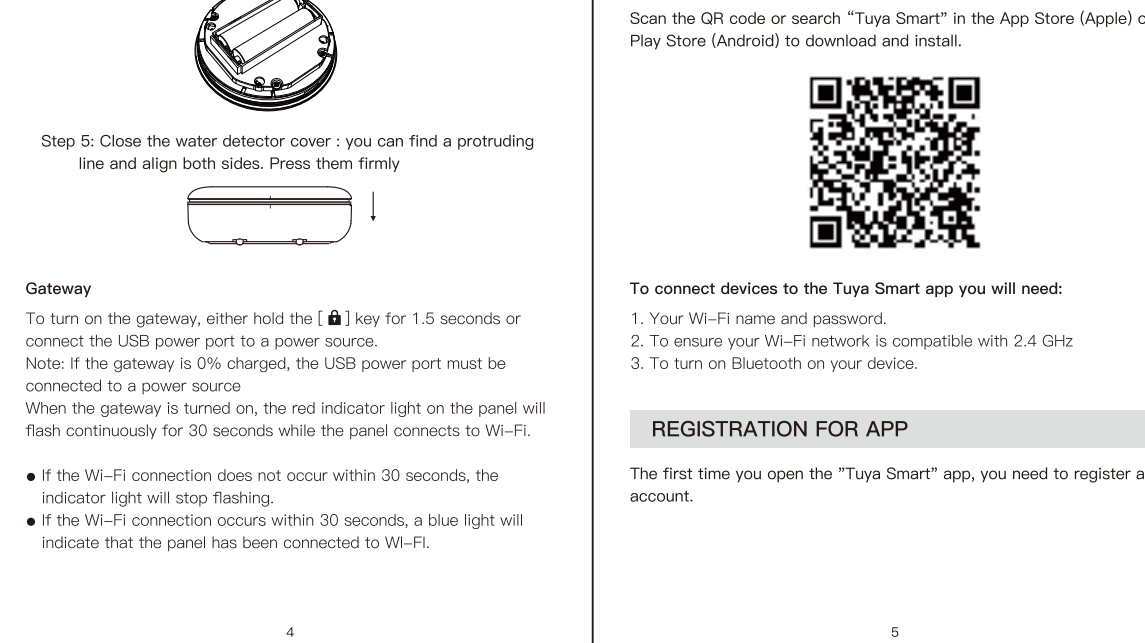
PRODUCT OVERVIEW



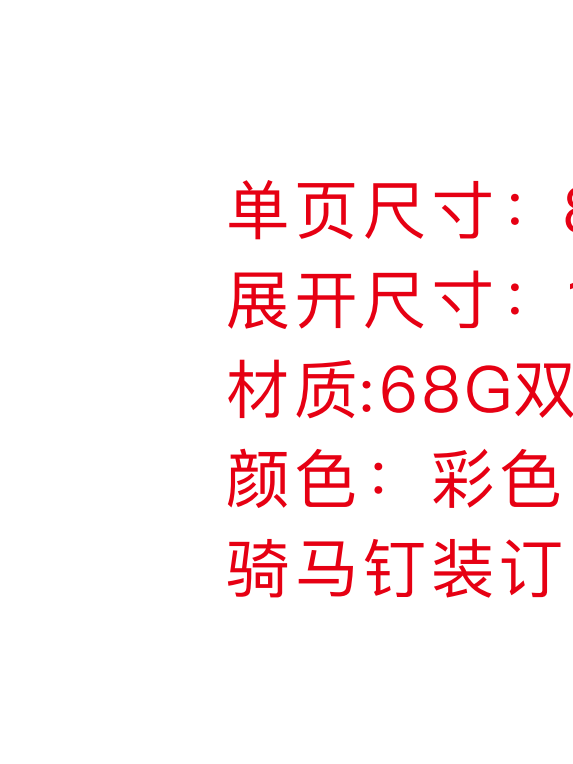
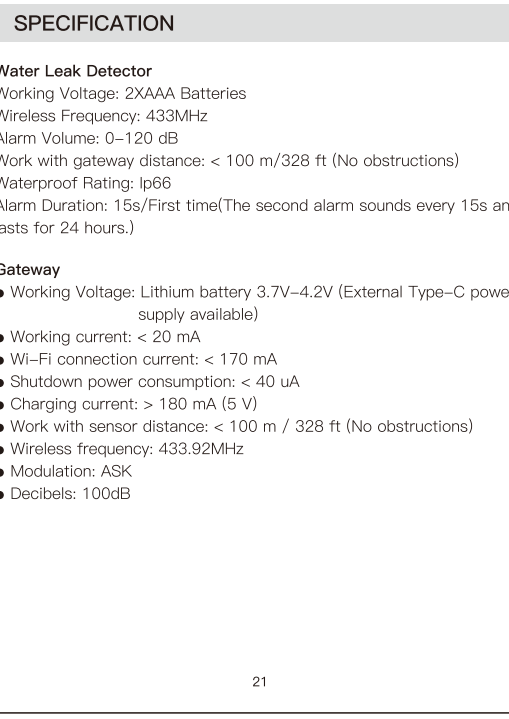
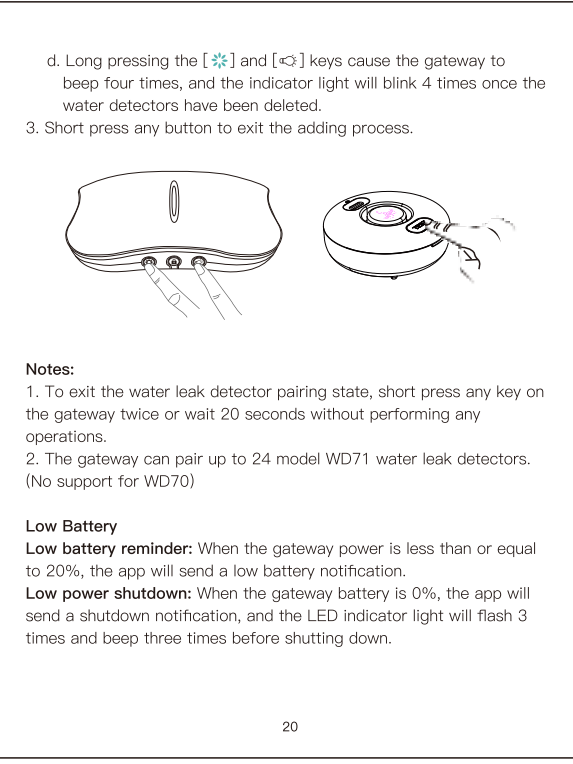
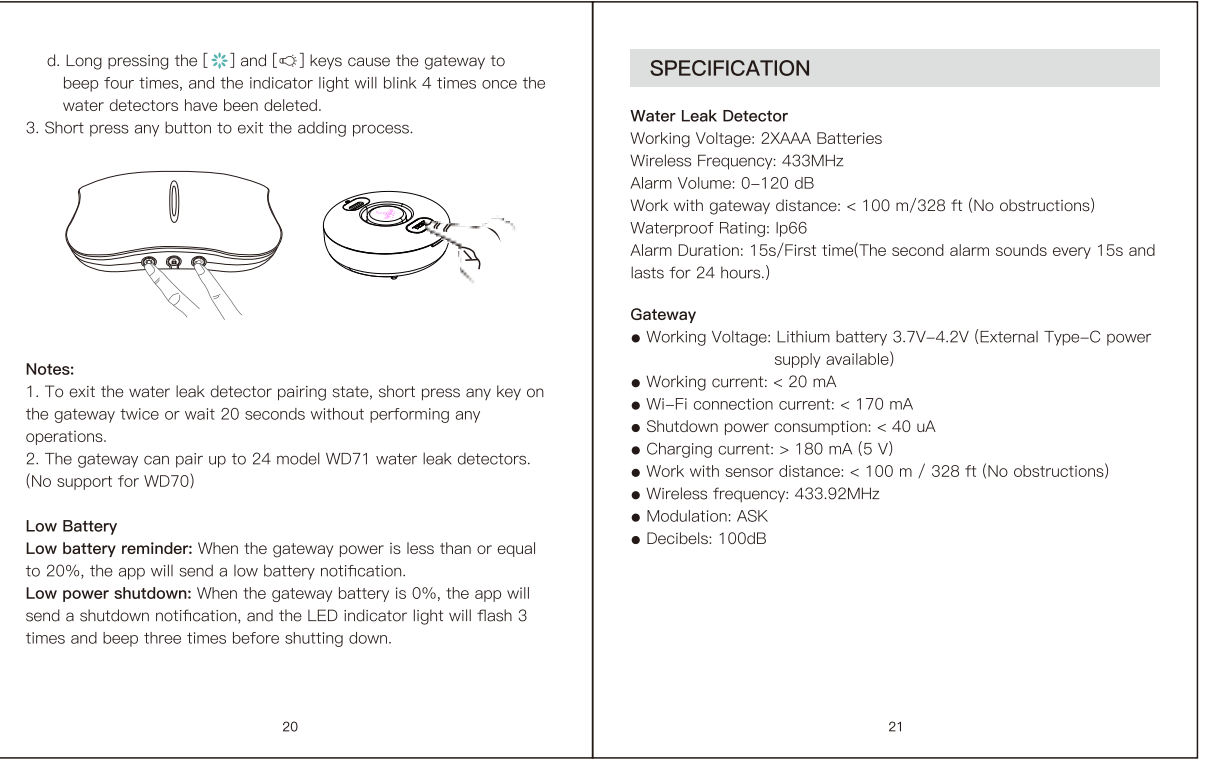
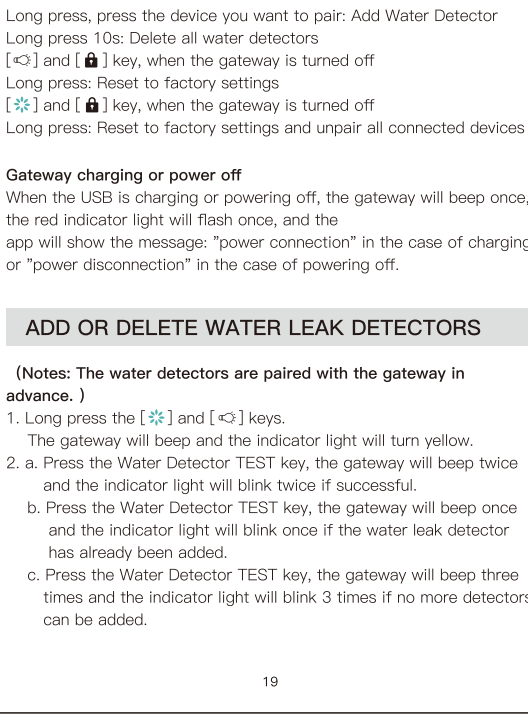
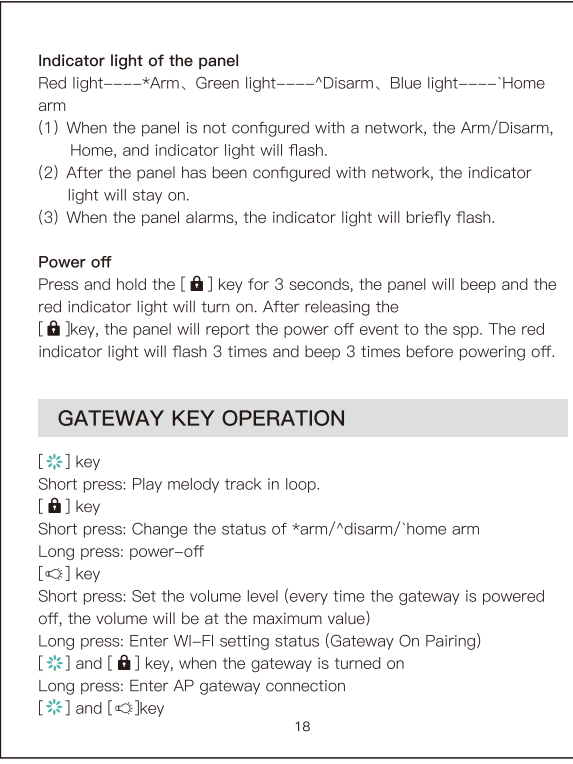
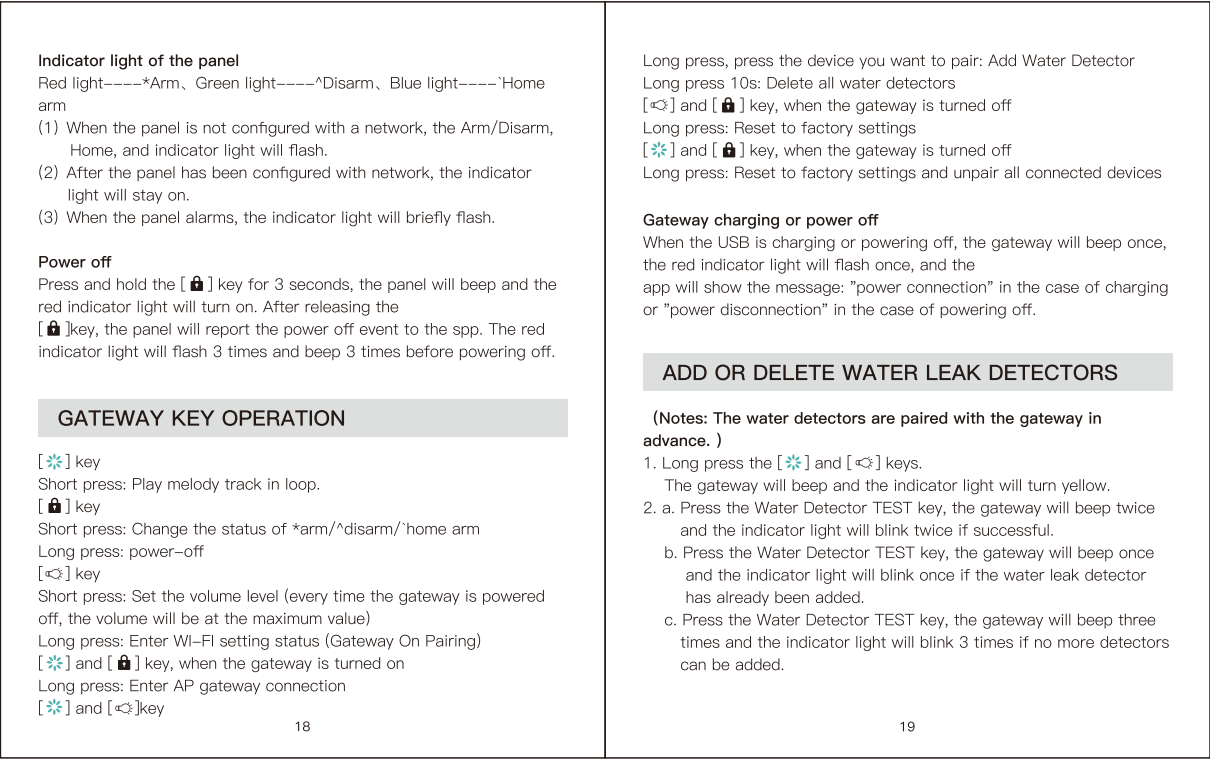
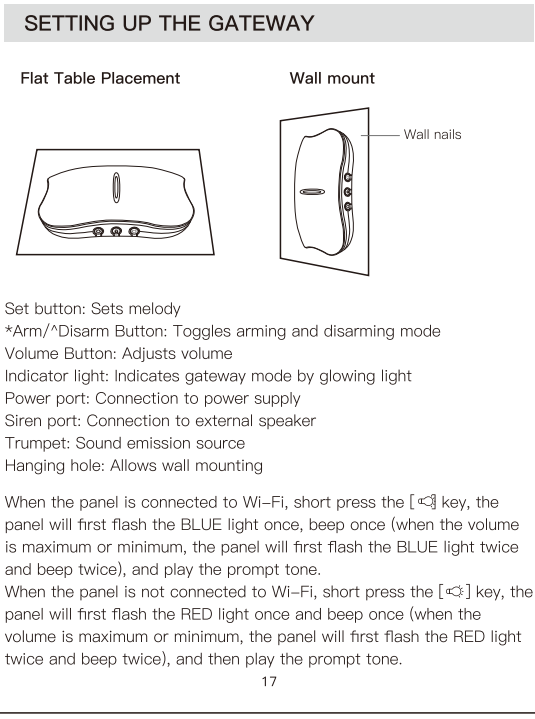
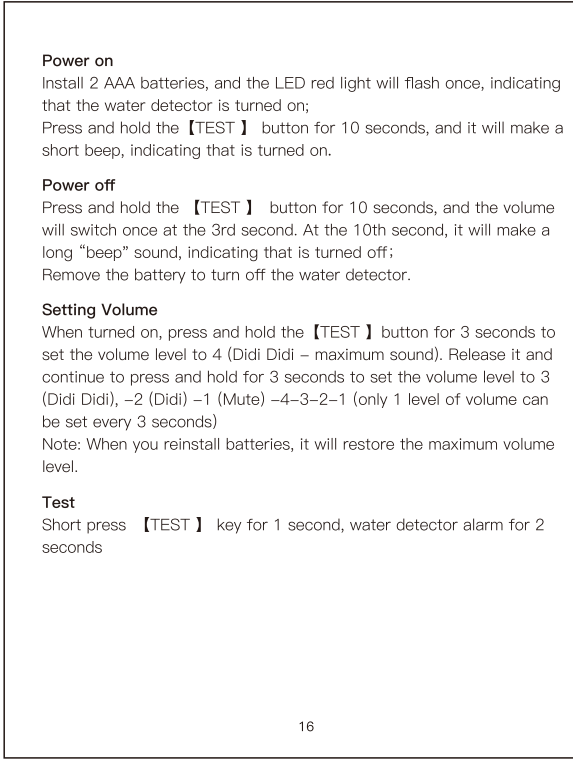
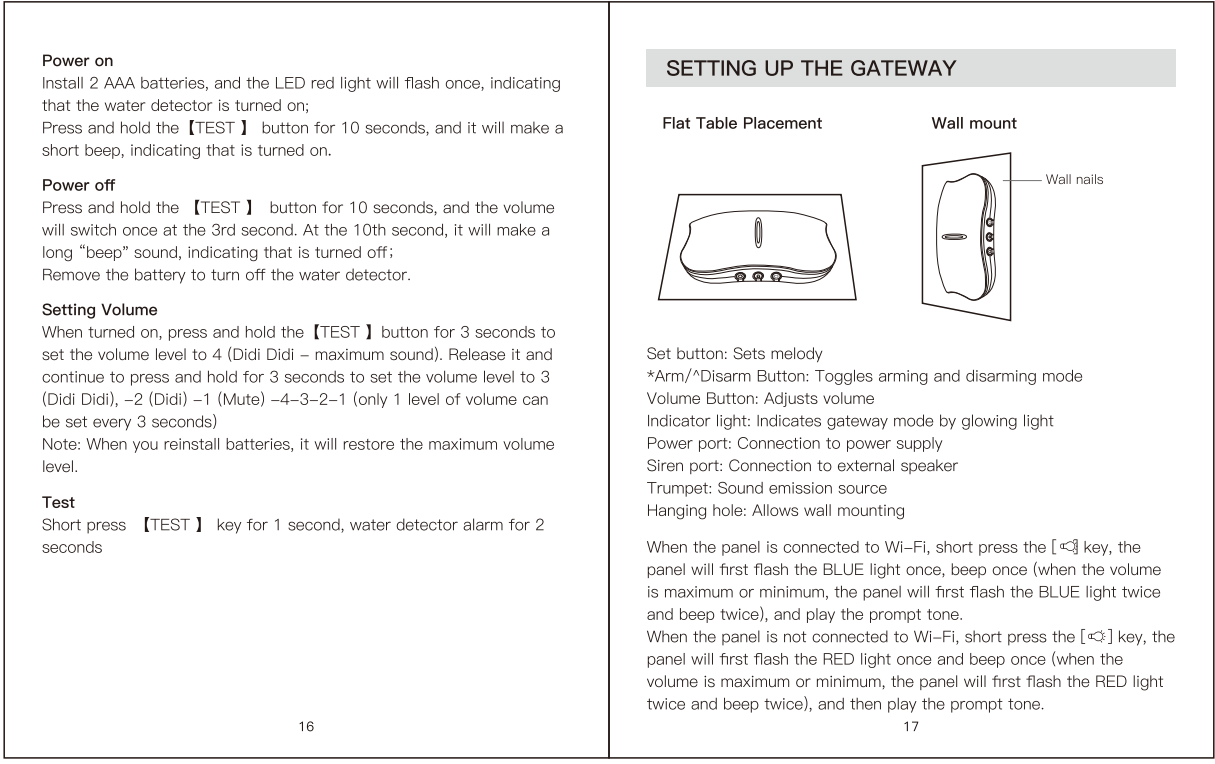
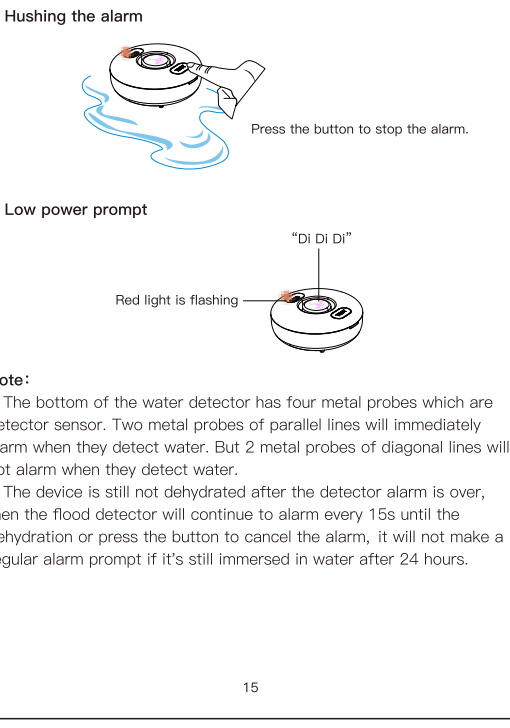
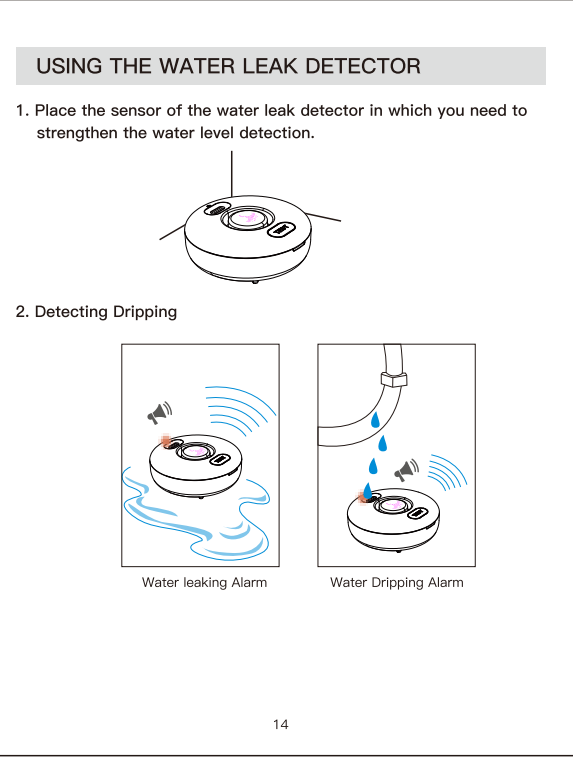
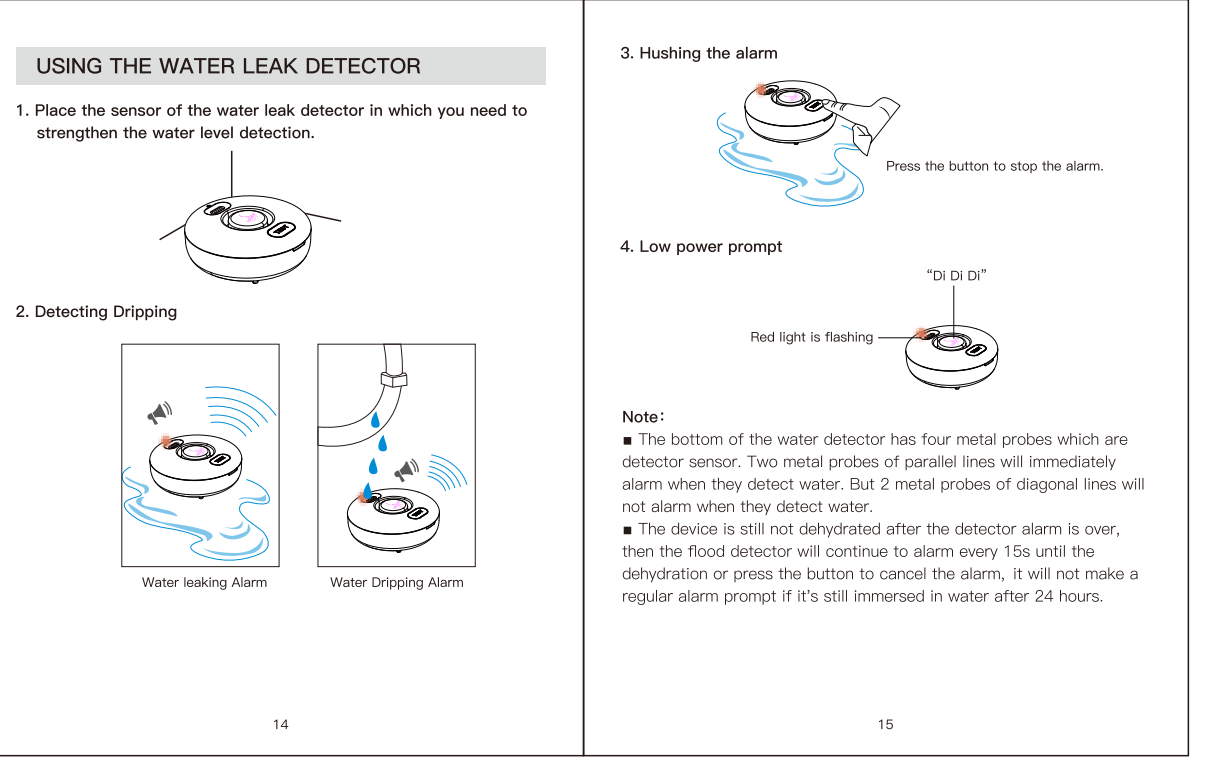
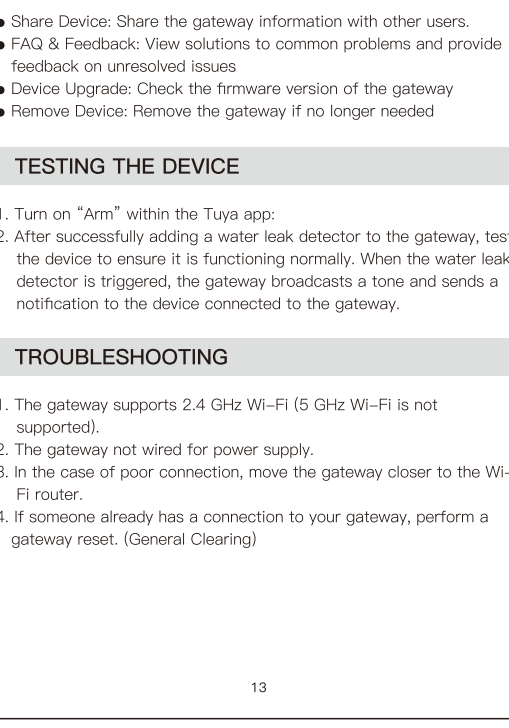
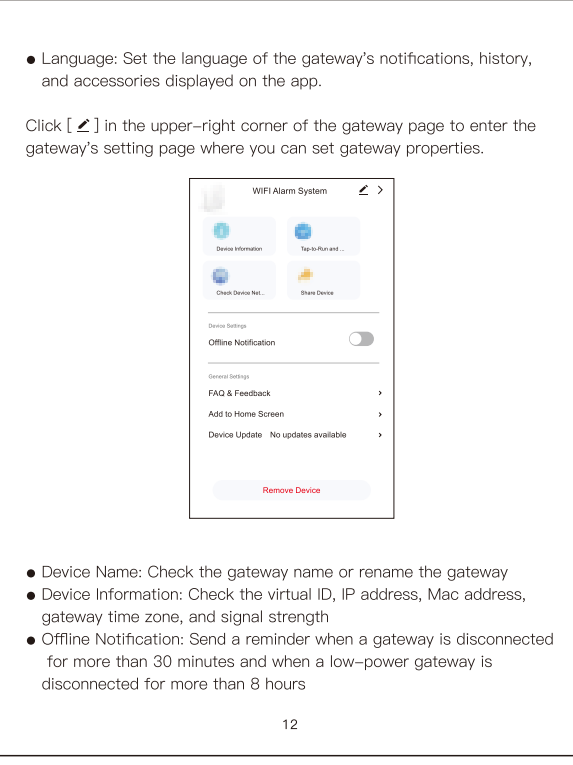
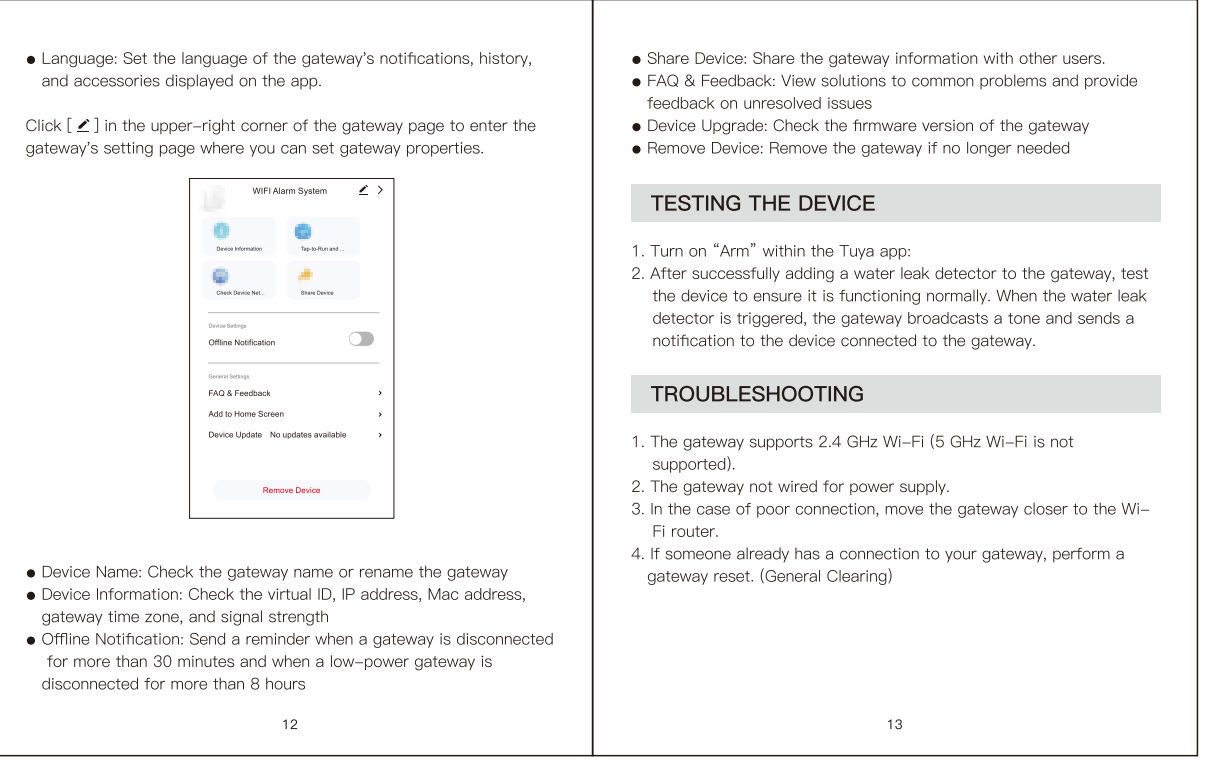
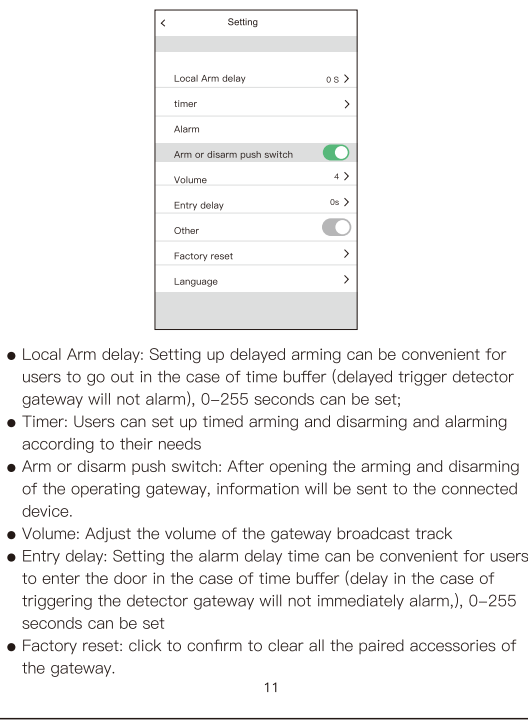
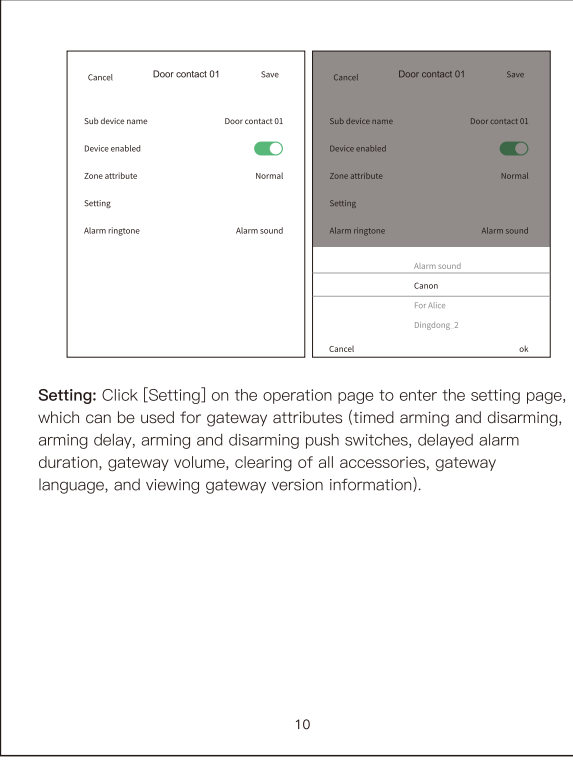
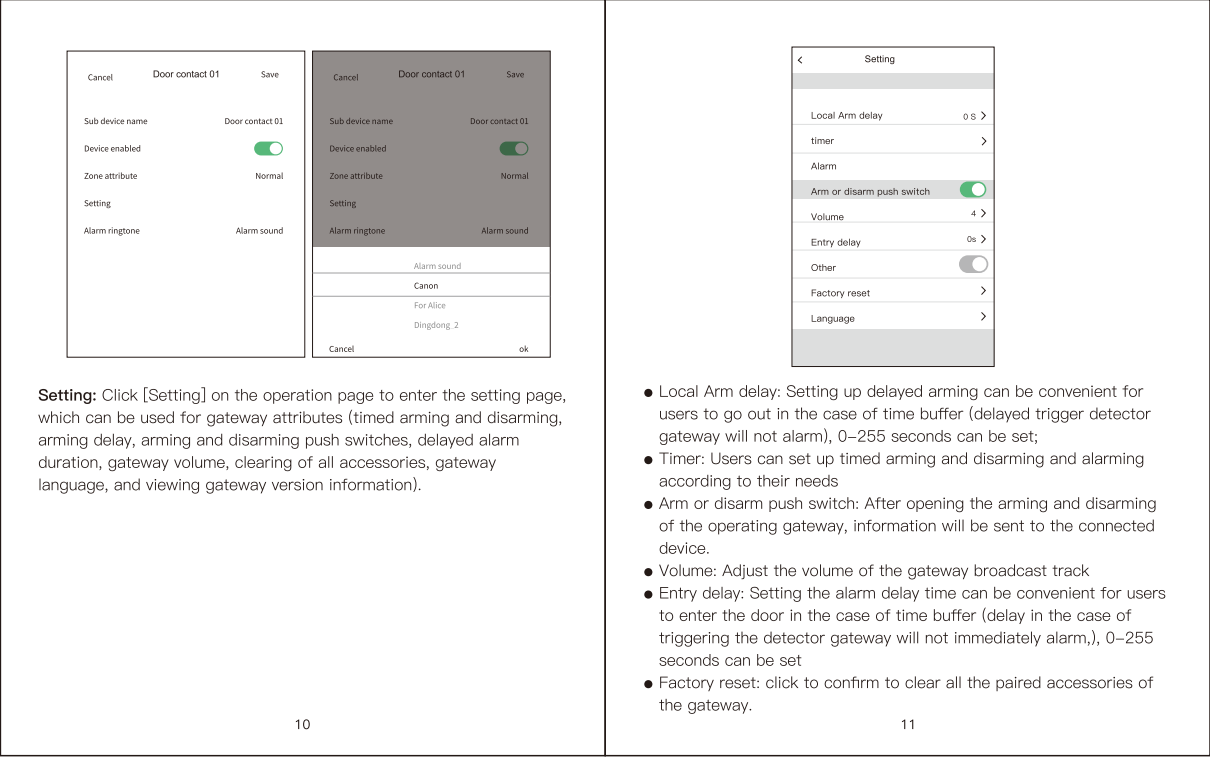
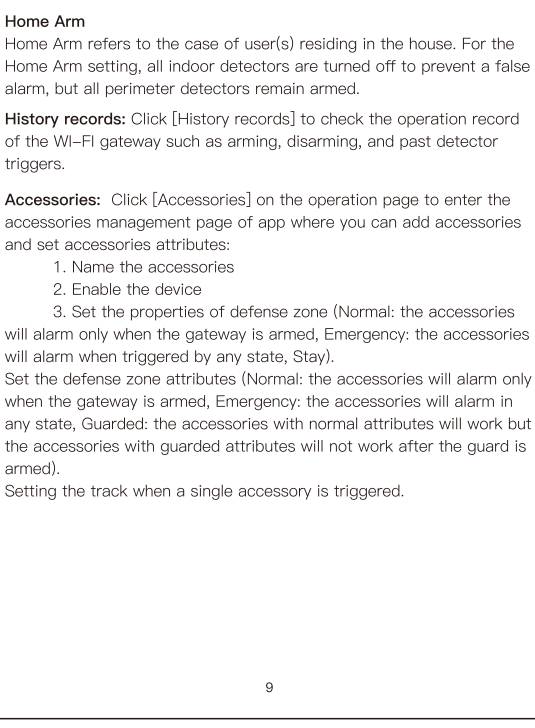
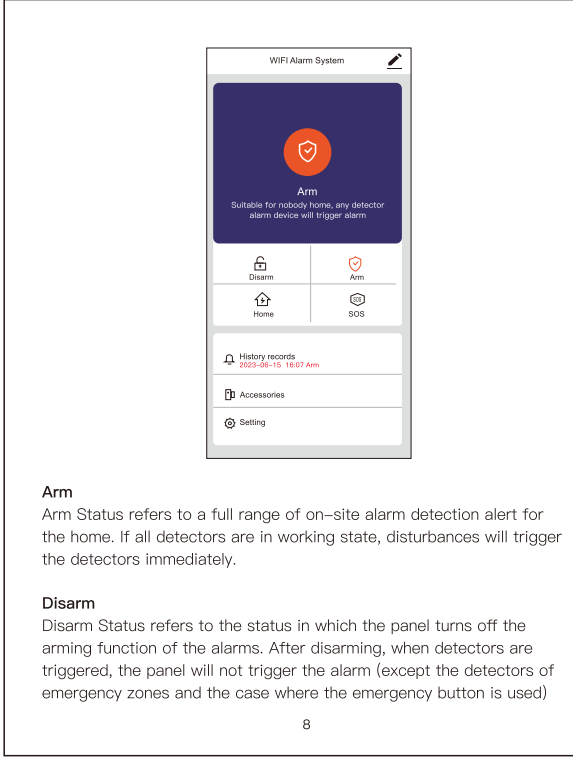
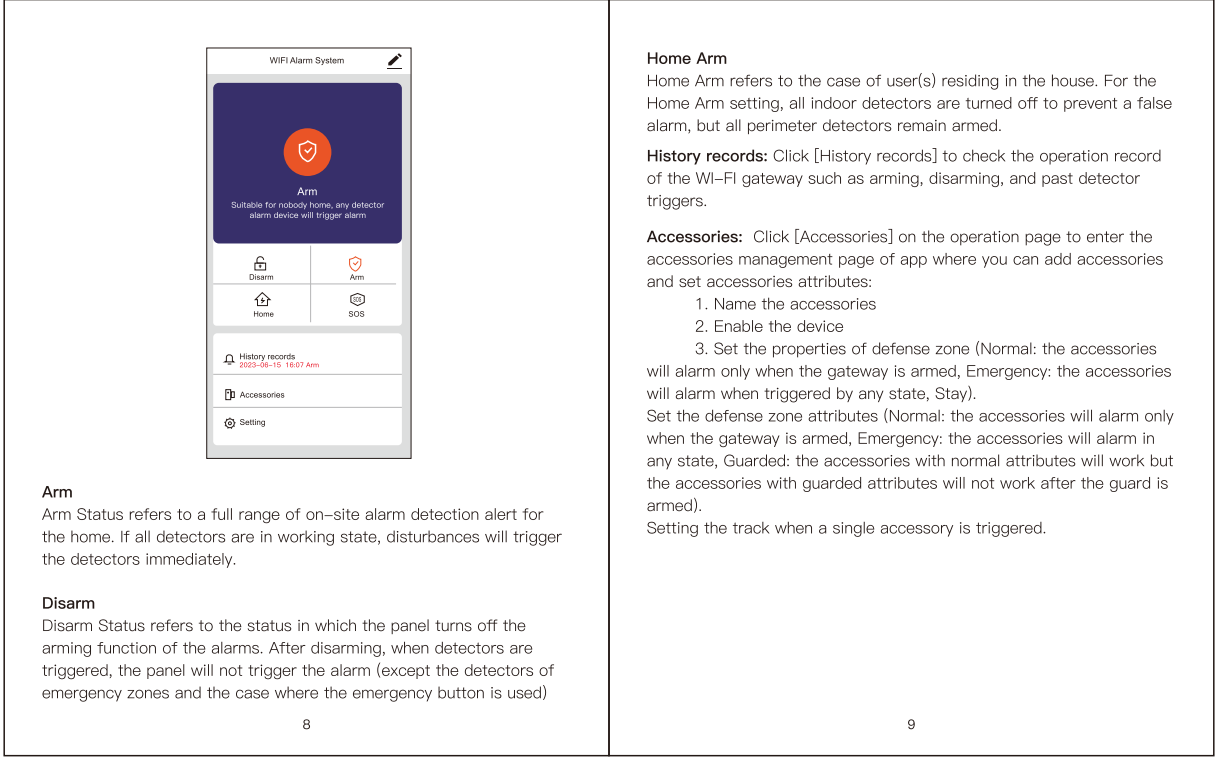
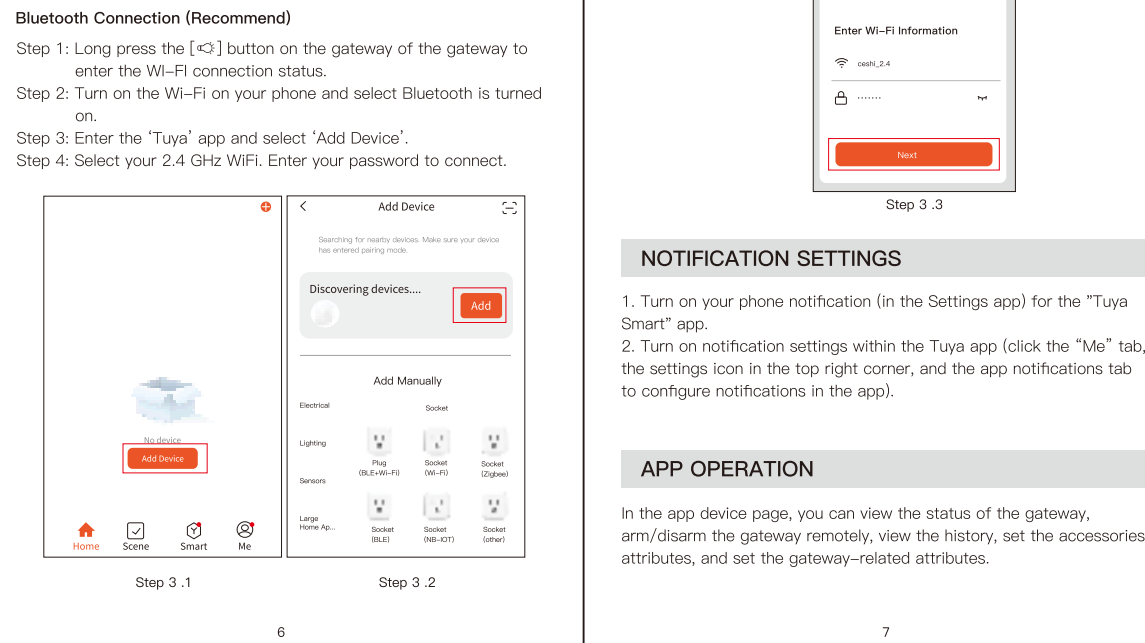
INSTALL BATTERIES INTO THE WATER LEAK DETECTOR



CONNECT DEVICES TO THE TUYA SMART APP



CONNECT TO THE TUYA APP



单页尺寸: 80x100mm
展开尺寸: 160x100mm
材质:68G双胶
颜色: 彩色
骑马钉装订

FCC Statement

This equipment has been tested and found to comply with the limits for a Class B digital device, pursuant to part 15 of the FCC rules. These limits are designed to provide reasonable protection against harmful interference in a residential installation. This equipment generates, uses and can radiate radio frequency energy and, if not installed and used in accordance with the instructions, may cause harmful interference to radio communications. However, there is no guarantee that interference will not occur in a particular installation. If this equipment does cause harmful interference to radio or television reception, which can be determined by turning the equipment off and on, the user is encouraged to try to correct the interference by one or more of the following measures:

- Reorient or relocate the receiving antenna.
- Increase the separation between the equipment and receiver.
- Connect the equipment into an outlet on a circuit different from that to which the receiver is connected.
- Consult the dealer or an experienced radio/TV technician for help.

To assure continued compliance, any changes or modifications not expressly approved by the party.

Responsible for compliance could void the user's authority to operate this equipment. (Example- use only shielded interface cables when connecting to computer or peripheral devices).

This equipment complies with Part 15 of the FCC Rules. Operation is subject to the following two conditions:

- (1) This device may not cause harmful interference, and
- (2) This device must accept any interference received, including interference that may cause undesired operation.

FCC Radiation Exposure Statement:

The equipment complies with FCC Radiation exposure limits set forth for uncontrolled environment. This equipment should be installed and operated with **minimum distance 20cm** between the radiator and your body.