

## **SAR Test Setup Photographs**

- Head SAR Test Photo
- Body SAR Test Photo
- Phablet SAR Test Photo

## ■ Test Setup Photo (Liquid depth)



Note: The liquid depth is maintained at a minimum depth of 15 cm to minimize reflections from the upper surface.

## ■ Test Setup Photo (Head SAR Test Photo)



## ■ Test Setup Photo

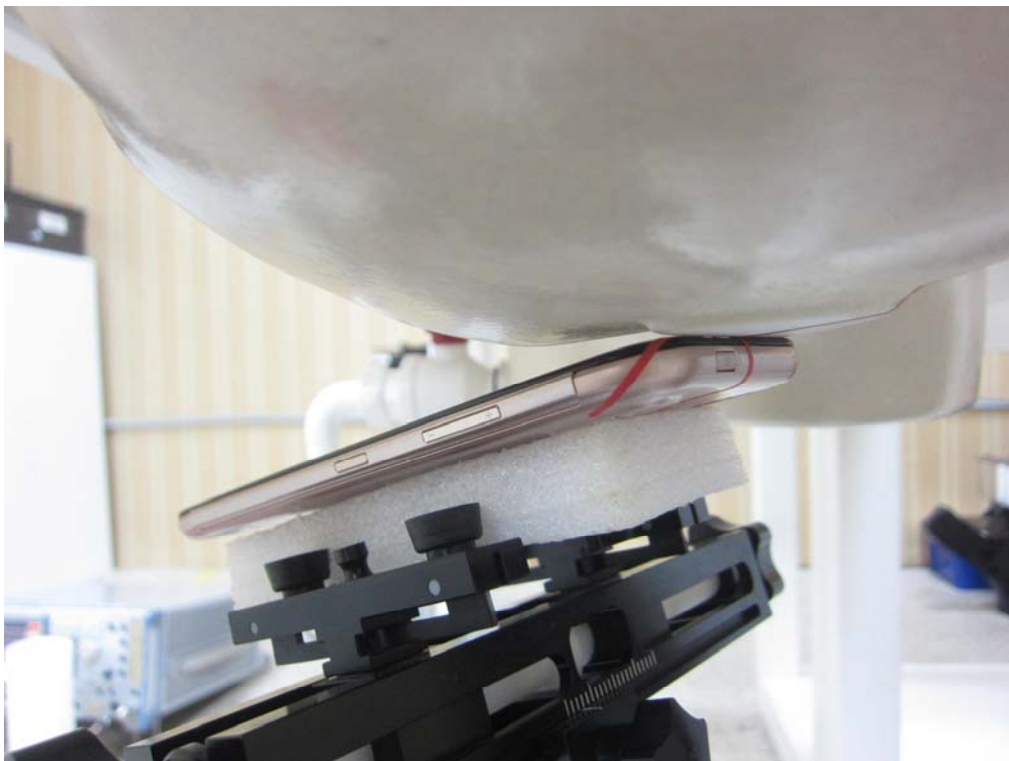
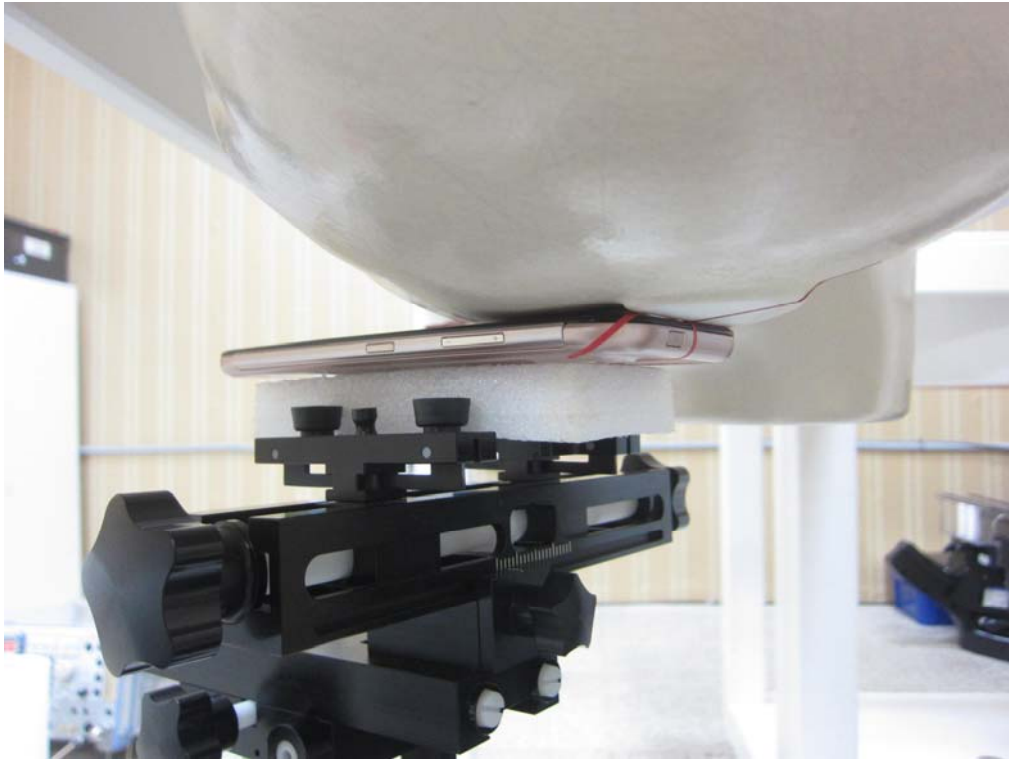


## ■ Test Setup Photo (Head SAR Test Photo)





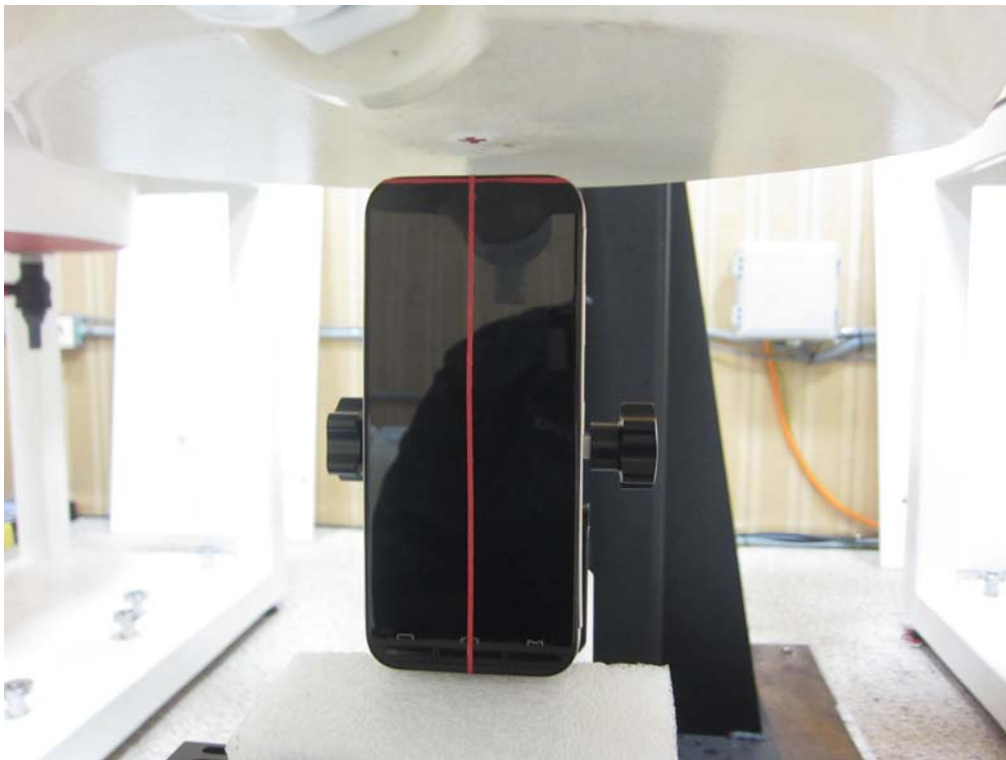
## ■ Test Setup Photo



■ Test Setup Photo (Body SAR Test Photo)

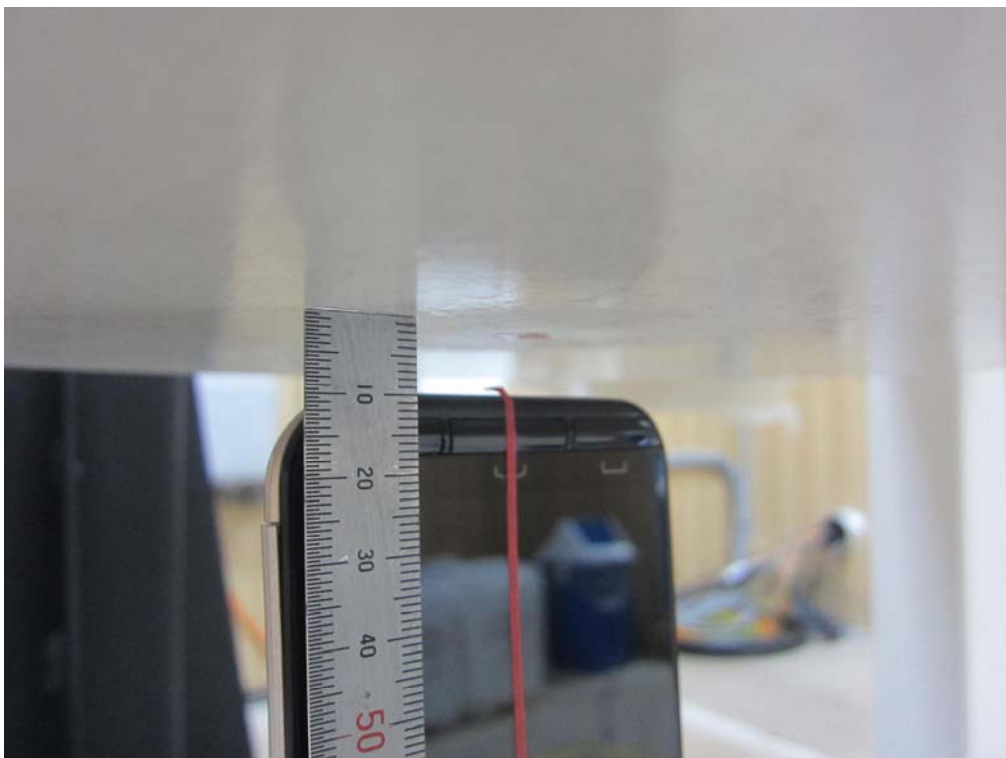
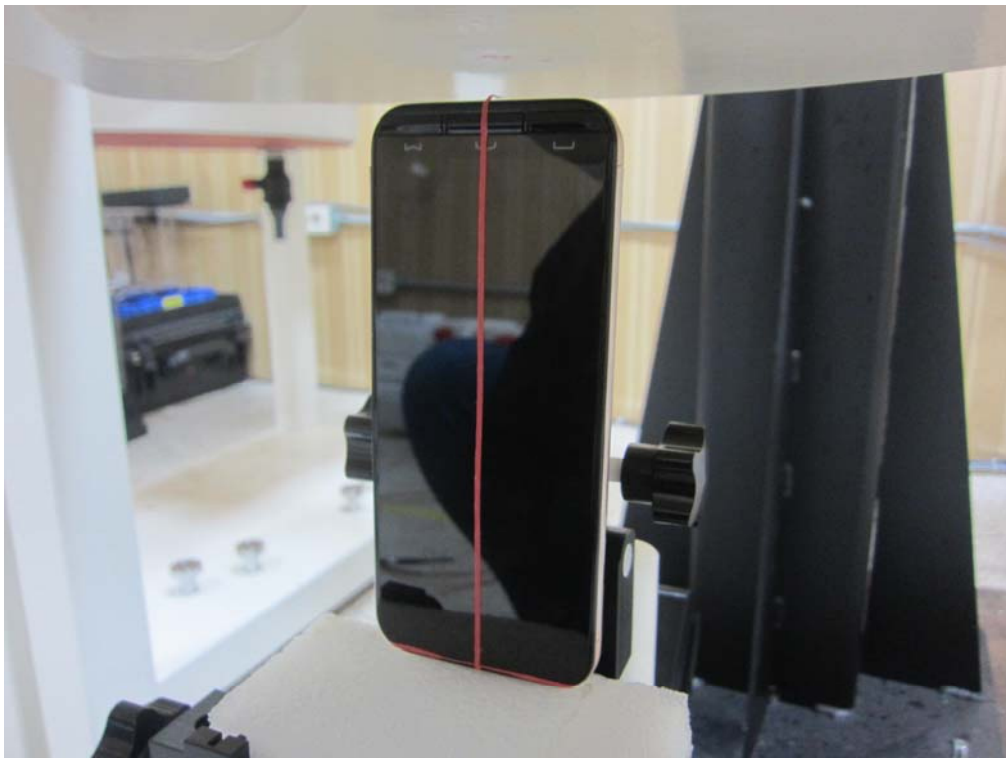


■ Test Setup Photo (Top\_10 mm)





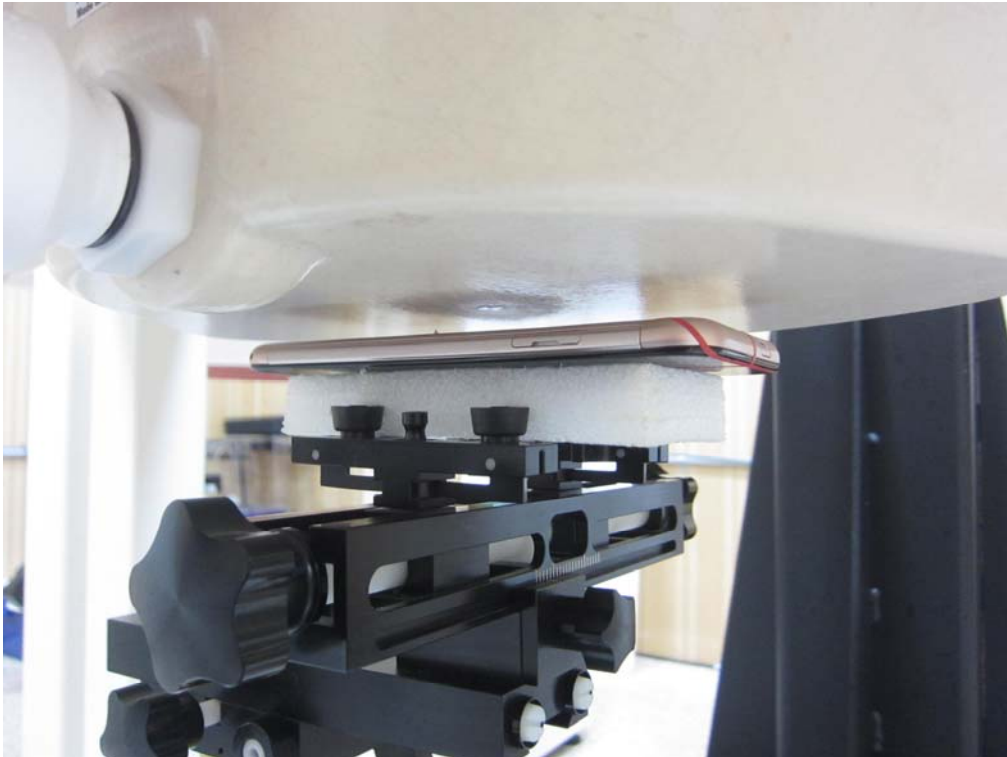
■ Test Setup Photo (Bottom\_10 mm)



■ Test Setup Photo (Front\_10 mm)



■ Test Setup Photo (Rear\_10 mm)



■ Test Setup Photo (Left\_10 mm)



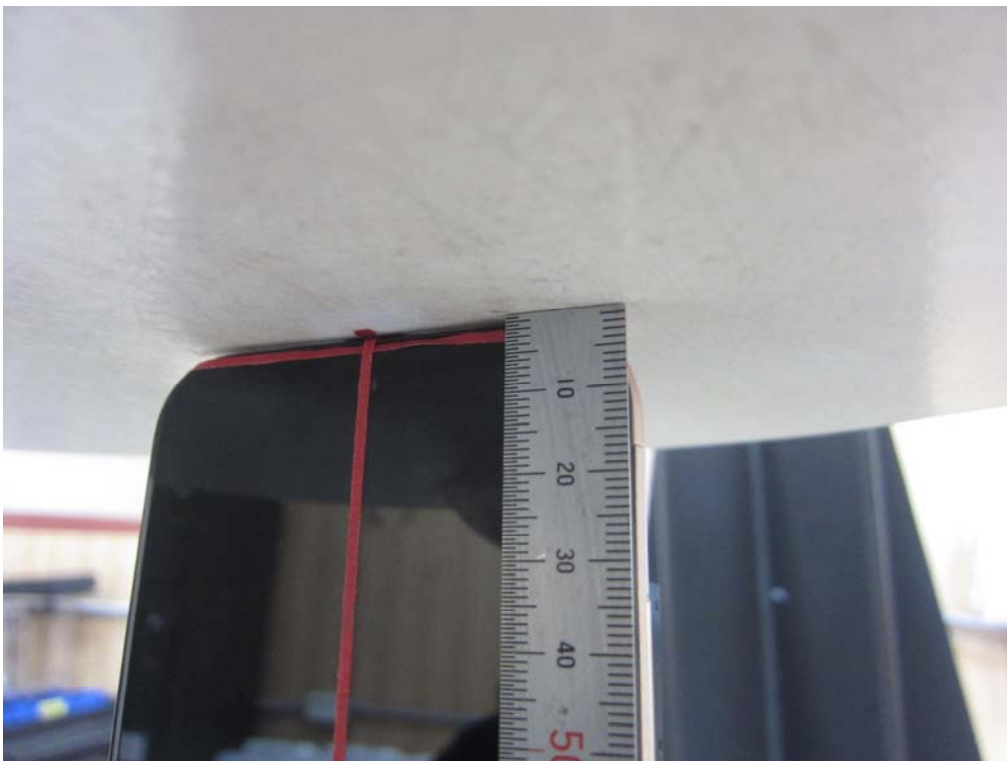


■ Test Setup Photo (Phablet SAR Test Photo)

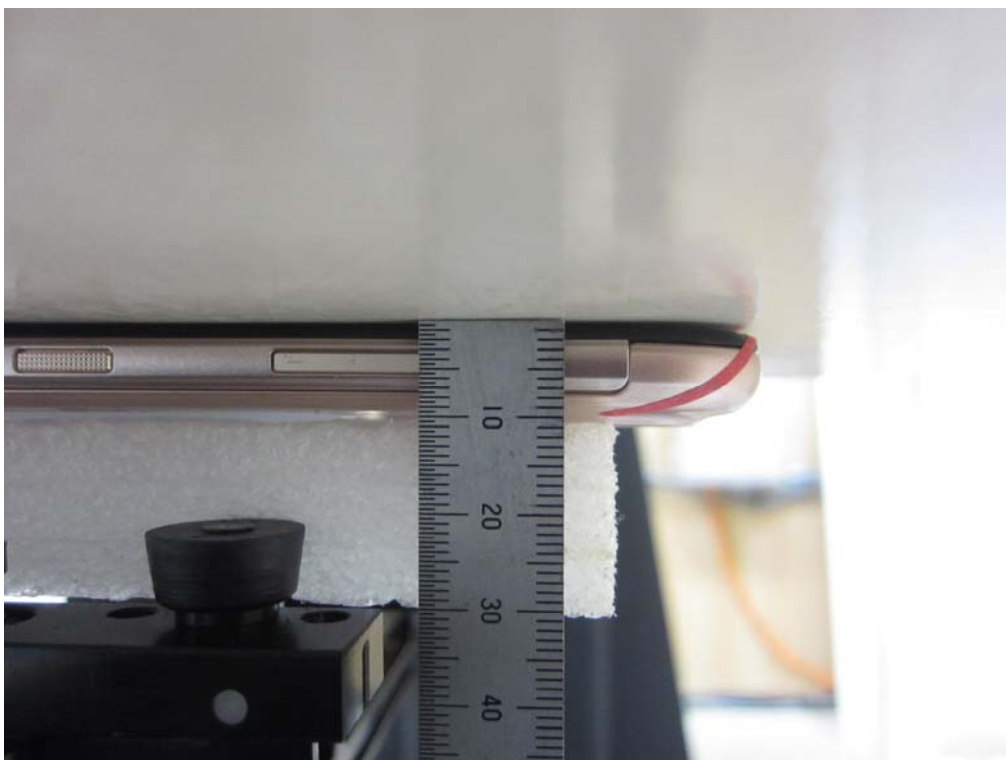




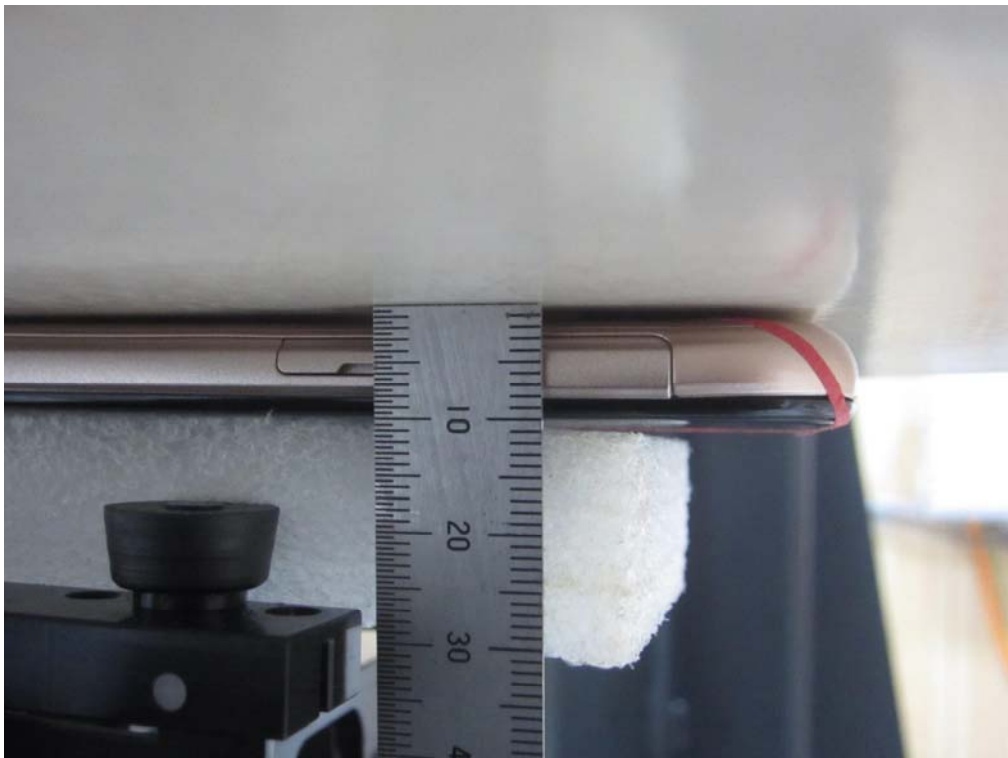
■ Test Setup Photo (Top\_0 mm)



■ Test Setup Photo (Front\_0 mm)



■ Test Setup Photo (Rear\_0 mm)



■ Test Setup Photo (Left\_0 mm)

