

Peak SAR Location

Body SAR



File : c:/idx3/SYSTEM/SARMEAS3/data/Normal/01122707_ZOOM.VLT
Start : 27-Dec-101 04:29:53 pm End : 27-Dec-101 04:38:39 pm

Radio Type : HYUNDAI
Model Number : HWP-230
Serial Number : 1
Frequency : 1851.25 MHz
Peak Trans. Pwr : 0.320 W
Start Trans. Pwr : 0.320 W
Antenna Type : Helical
Antenna Posn. : Internal
Phantom Type : Flat
Phantom Posn. : E Field
Scan Type : ZOOM/SAR
Probe Name : PCTEST
Field Type : E Field
Orientation : 0 Degrees

Mixture Type = Muscle
Mixture Dielectric Constant = 54.200
Mixture Conductivity = 1.450

Comment :
HYUNDAI WLL TELEPHONE - PCS MODE
CH 0025 Conducted 25.0 dBm
HYUNDAI WLL TELEPHONE

Robot : PCTEST

Probe Offset = 0.20 cm
Sensor Factor = 0.0108
Conversion Factor = 0.496

PCTEST Amplifier Channel Settings : 0.309 0.361 0.421

Max Location : X = 4.500, Y = -3.500, Z = 0.000 (cm) Value = 36.789

Measured Values (volts) =
3.457E-002 2.339E-002 1.633E-002 1.279E-002 1.035E-002 7.838E-003
5.738E-003 4.615E-003 3.540E-003 3.138E-003 2.595E-003 2.432E-003
2.222E-003 1.909E-003 2.161E-003 1.894E-003 1.774E-003 1.941E-003
2.179E-003 2.195E-003 2.390E-003

Calc. Voltage @ Surface (Vs) = 0.0467

Voltage @ 1.00 cm (Vt) = 0.0123

Ave. Voltage (Vs+Vt)/2 = 0.0295

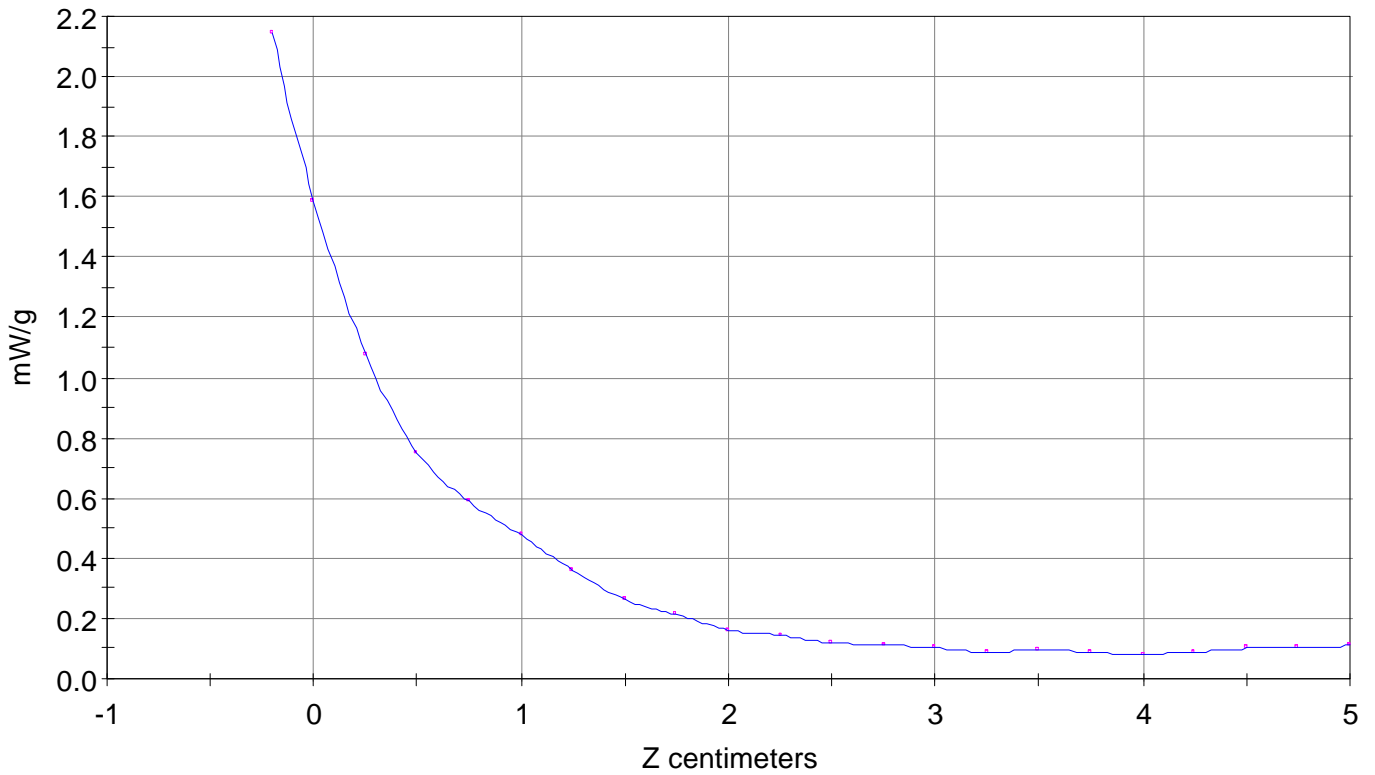
Ave. SAR over 1 g (mW/g) = 1.3542

SAR Scan

File : 01122707_ZOOM

Start : 27-Dec-101 04:29:53 pm End : 27-Dec-101 04:38:39 pm

HYUNDAI/HWP-230/1;1851.25MHz;W;Helical/Internal;
Flat/E Field;ZOOM/SAR;PCTEST/E Field/0 DegreesMuscle/54.200/1.450

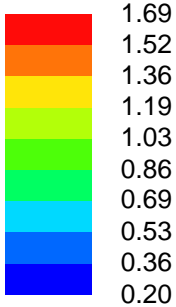
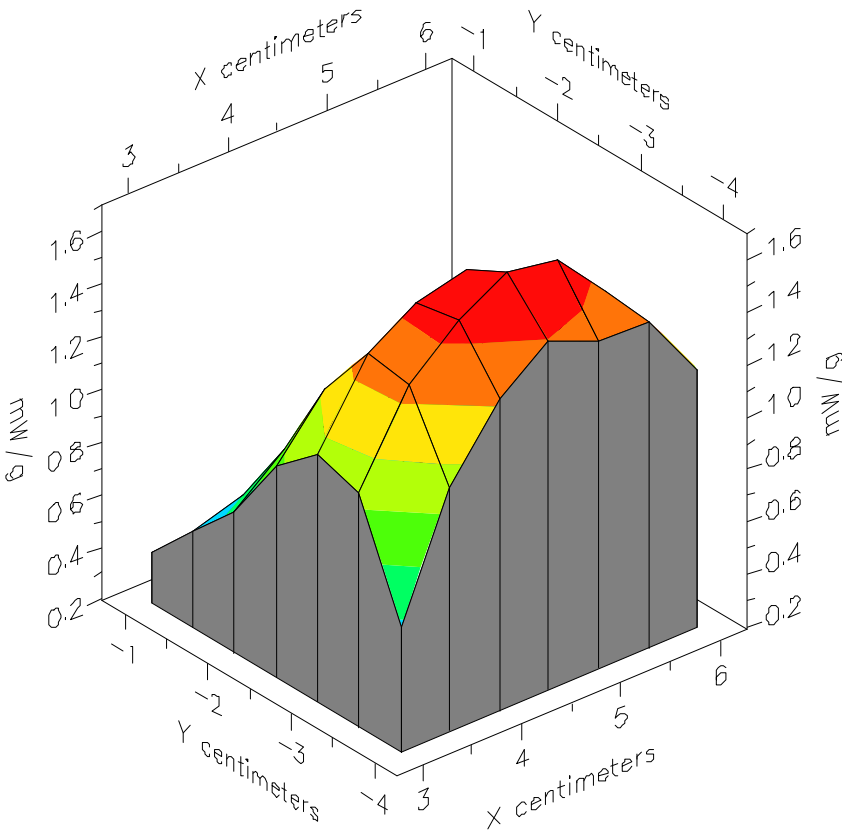


File : 01122707_ZOOM

Start : 27-Dec-101 04:29:53 pm End : 27-Dec-101 04:38:39 pm

HYUNDAI/HWP-230/1;1851.25MHz;W;Helical/Internal;

Flat/E Field;ZOOM/SAR;PCTEST/E Field/0 DegreesMuscle/54.200/1.450

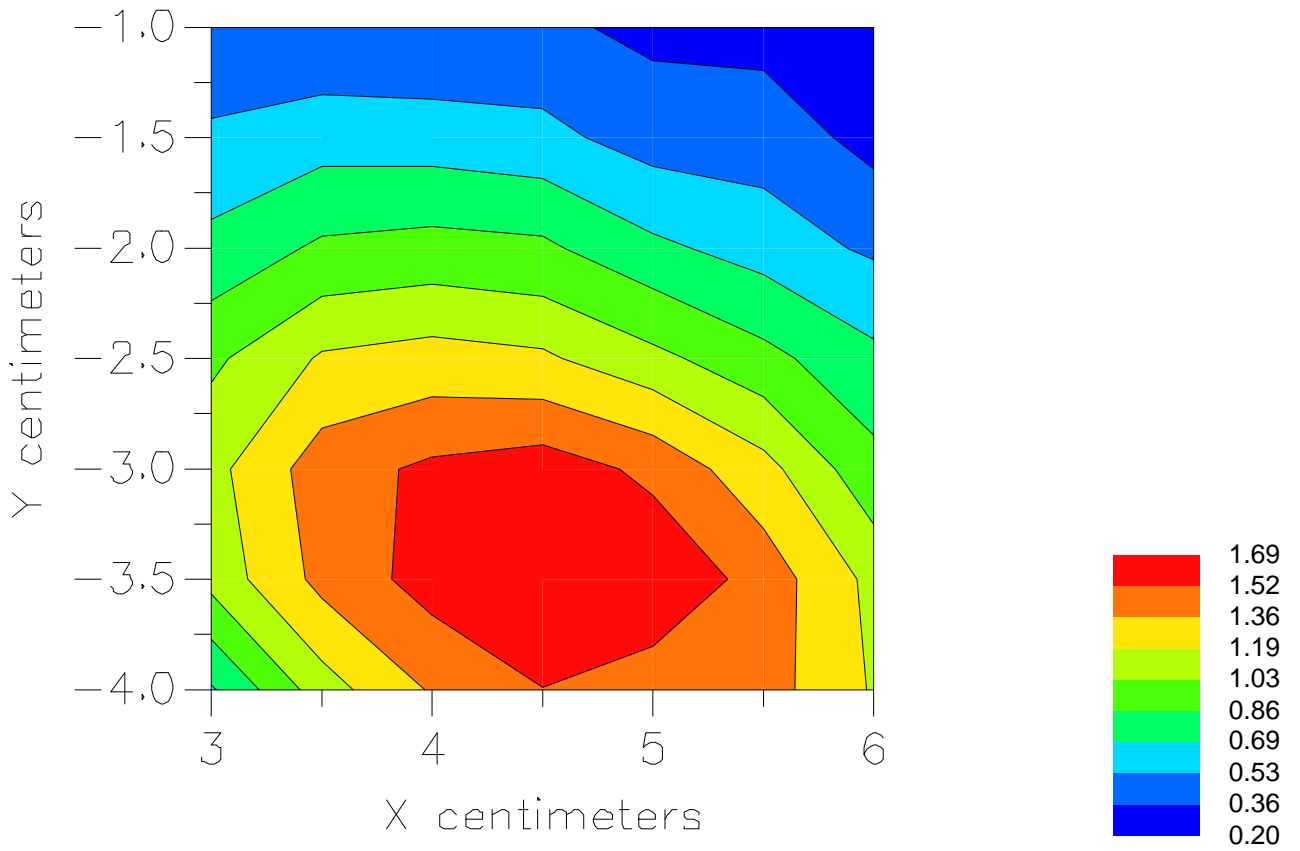


File : 01122707_ZOOM

Start : 27-Dec-101 04:29:53 pm End : 27-Dec-101 04:38:39 pm

HYUNDAI/HWP-230/1;1851.25MHz;W;Helical/Internal;

Flat/E Field;ZOOM/SAR;PCTEST/E Field/0 DegreesMuscle/54.200/1.450



File : c:/idx3/SYSTEM/SARMEAS3/data/Normal/01122706_ZOOM.VLT
Start : 27-Dec-101 04:16:57 pm End : 27-Dec-101 04:26:39 pm

Radio Type : HYUNDAI
Model Number : HWP-230
Serial Number : 1
Frequency : 1880.00 MHz
Peak Trans. Pwr : 0.320 W
Start Trans. Pwr : 0.320 W
Antenna Type : Helical
Antenna Posn. : Internal
Phantom Type : Flat
Phantom Posn. : E Field
Scan Type : ZOOM/SAR
Probe Name : PCTEST
Field Type : E Field
Orientation : 0 Degrees

Mixture Type = Muscle
Mixture Dielectric Constant = 54.200
Mixture Conductivity = 1.450

Comment :
HYUNDAI WLL TELEPHONE - PCS MODE
CH 0600 Conducted 25.0 dBm
HYUNDAI WLL TELEPHONE

Robot : PCTEST

Probe Offset = 0.20 cm
Sensor Factor = 0.0108
Conversion Factor = 0.496

PCTEST Amplifier Channel Settings : 0.309 0.361 0.421

Max Location : X = 5.000, Y = -3.500, Z = 0.000 (cm) Value = 34.715

Measured Values (volts) =
3.380E-002 2.272E-002 1.649E-002 1.253E-002 9.080E-003 7.452E-003
5.694E-003 4.491E-003 3.570E-003 2.909E-003 3.067E-003 2.626E-003
2.466E-003 2.536E-003 2.408E-003 2.506E-003 2.568E-003 2.529E-003
2.653E-003 2.569E-003 2.746E-003

Calc. Voltage @ Surface (Vs) = 0.0451

Voltage @ 1.00 cm (Vt) = 0.0118

Ave. Voltage (Vs+Vt)/2 = 0.0285

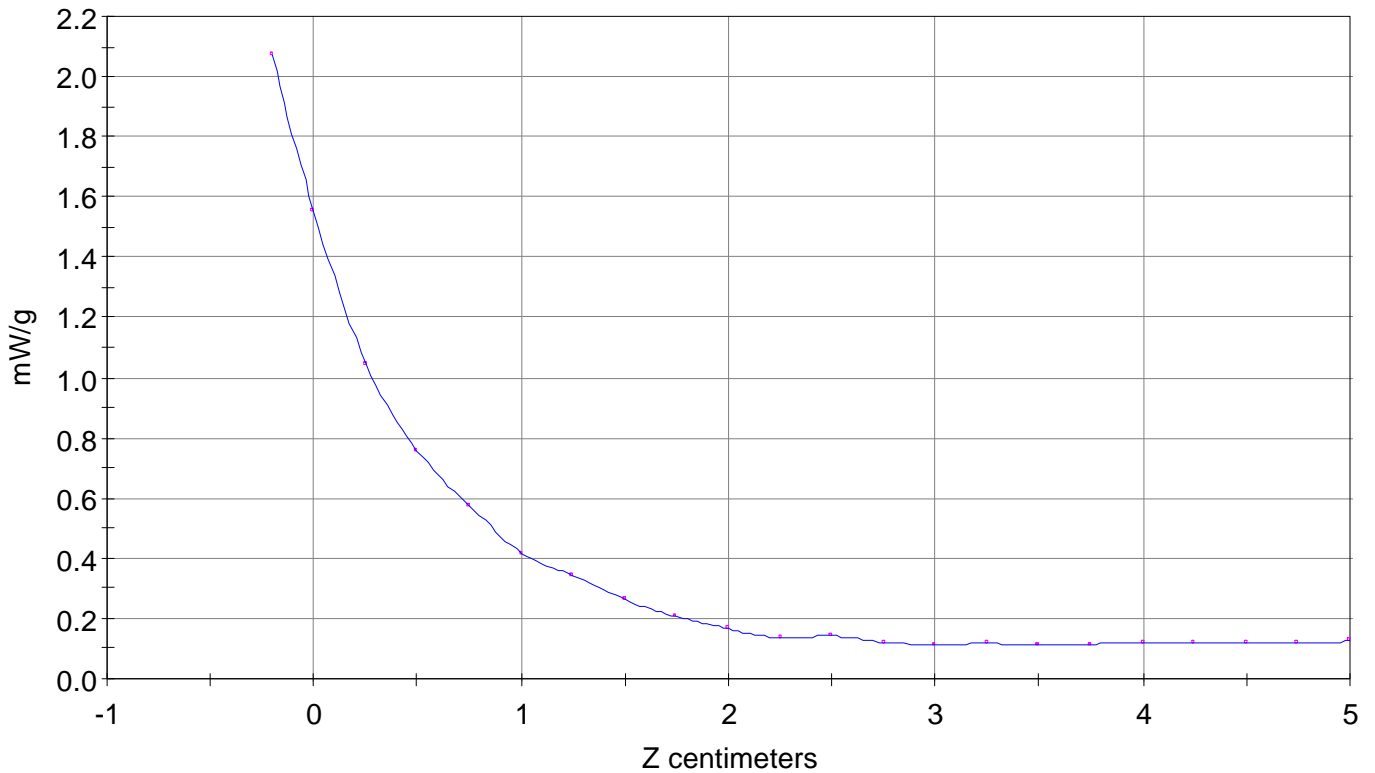
Ave. SAR over 1 g (mW/g) = 1.3067

SAR Scan

File : 01122706_ZOOM

Start : 27-Dec-101 04:16:57 pm End : 27-Dec-101 04:26:39 pm

HYUNDAI/HWP-230/1;1880.00MHz;W;Helical/Internal;
Flat/E Field;ZOOM/SAR;PCTEST/E Field/0 DegreesMuscle/54.200/1.450

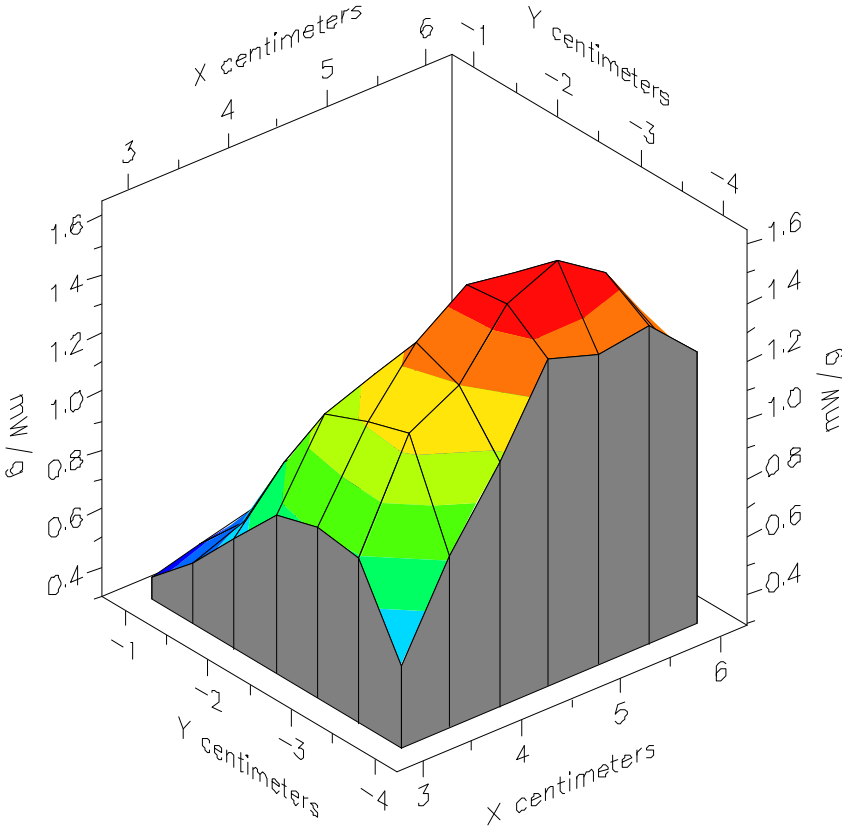


File : 01122706_ZOOM

Start : 27-Dec-101 04:16:57 pm End : 27-Dec-101 04:26:39 pm

HYUNDAI/HWP-230/1;1880.00MHz;W;Helical/Internal;

Flat/E Field;ZOOM/SAR;PCTEST/E Field/0 DegreesMuscle/54.200/1.450

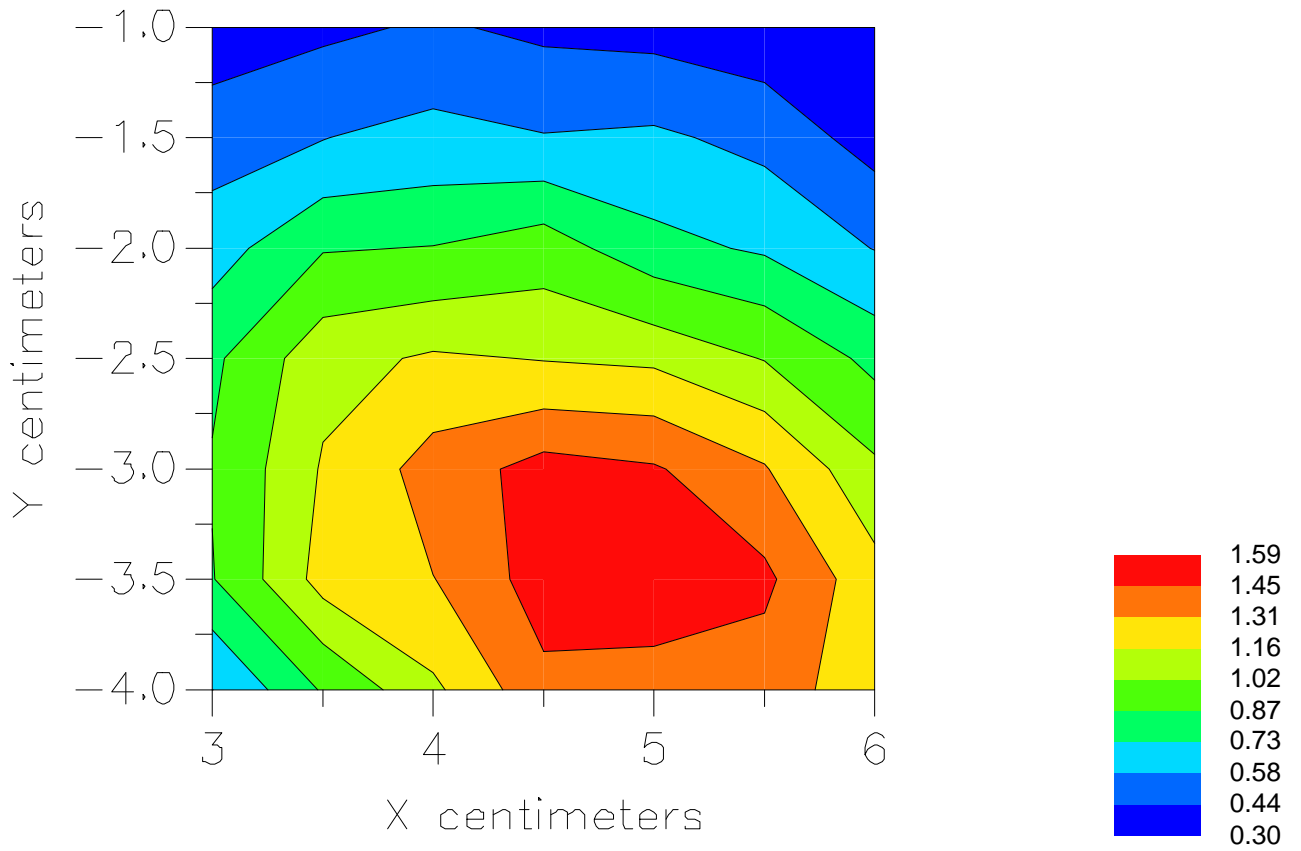


File : 01122706_ZOOM

Start : 27-Dec-101 04:16:57 pm End : 27-Dec-101 04:26:39 pm

HYUNDAI/HWP-230/1;1880.00MHz;W;Helical/Internal;

Flat/E Field;ZOOM/SAR;PCTEST/E Field/0 DegreesMuscle/54.200/1.450



File : c:/idx3/SYSTEM/SARMEAS3/data/Normal/01122708_ZOOM.VLT
Start : 27-Dec-101 04:43:03 pm End : 27-Dec-101 04:49:39 pm

Radio Type : HYUNDAI
Model Number : HWP-230
Serial Number : 1
Frequency : 1908.75 MHz
Peak Trans. Pwr : 0.320 W
Start Trans. Pwr: 0.320 W
Antenna Type : Helical
Antenna Posn. : Internal
Phantom Type : Flat
Phantom Posn. : E Field
Scan Type : ZOOM/SAR
Probe Name : PCTEST
Field Type : E Field
Orientation : 0 Degrees

Mixture Type = Muscle
Mixture Dielectric Constant = 54.200
Mixture Conductivity = 1.450

Comment :
HYUNDAI WLL TELEPHONE - PCS MODE
CH 1175 Conducted 25.0 dBm
HYUNDAI WLL TELEPHONE

Robot : PCTEST

Probe Offset = 0.20 cm
Sensor Factor = 0.0108
Conversion Factor = 0.496

PCTEST Amplifier Channel Settings : 0.309 0.361 0.421

Max Location : X = 4.500, Y = -3.500, Z = 0.000 (cm) Value = 34.379

Measured Values (volts) =
3.238E-002 2.212E-002 1.496E-002 1.143E-002 9.172E-003 6.945E-003
5.248E-003 3.860E-003 3.442E-003 2.642E-003 2.450E-003 2.167E-003
1.925E-003 1.963E-003 1.670E-003 1.857E-003 1.889E-003 1.855E-003
2.064E-003 2.024E-003 2.414E-003

Calc. Voltage @ Surface (Vs) = 0.0441

Voltage @ 1.00 cm (Vt) = 0.0110

Ave. Voltage (Vs+Vt)/2 = 0.0275

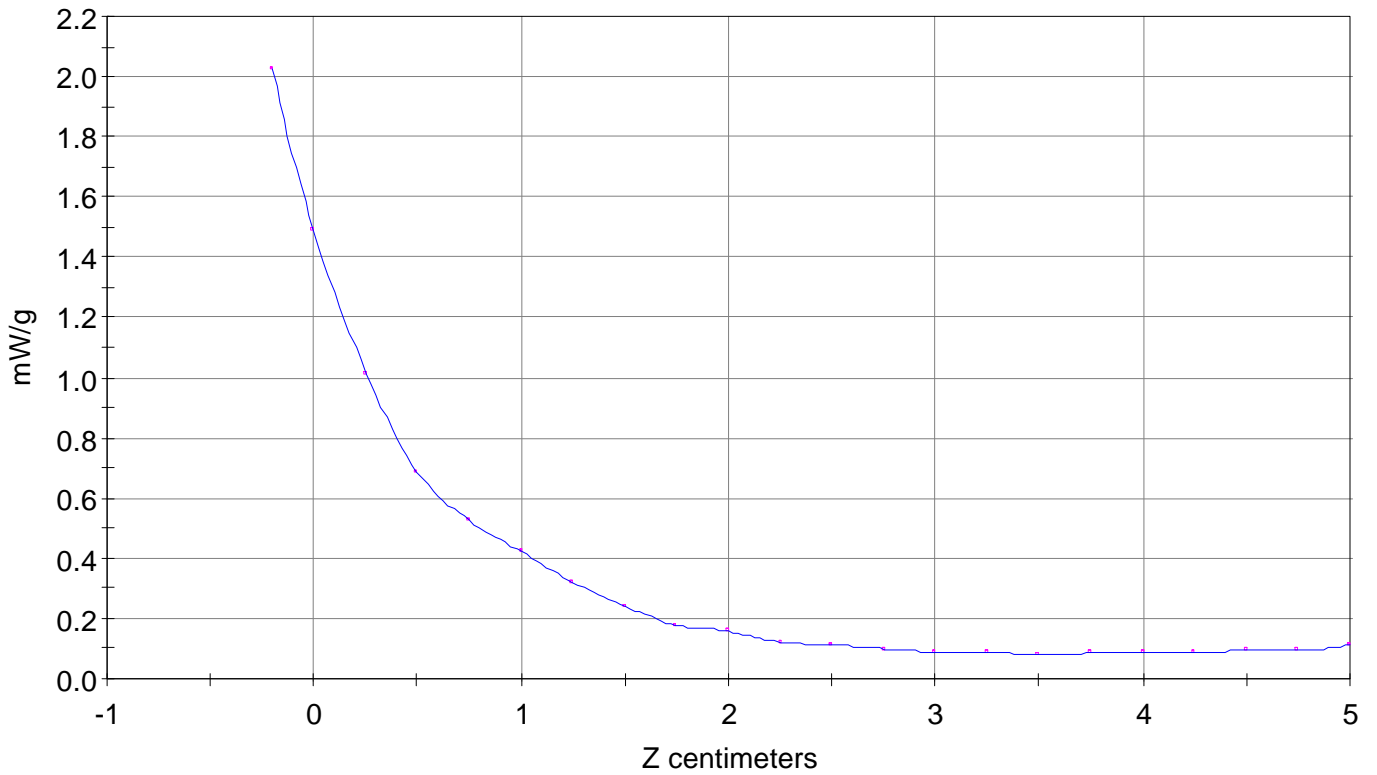
Ave. SAR over 1 g (mW/g) = 1.2648

SAR Scan

File : 01122708_ZOOM

Start : 27-Dec-101 04:43:03 pm End : 27-Dec-101 04:49:39 pm

HYUNDAI/HWP-230/1;1908.75MHz;W;Helical/Internal;
Flat/E Field;ZOOM/SAR;PCTEST/E Field/0 DegreesMuscle/54.200/1.450

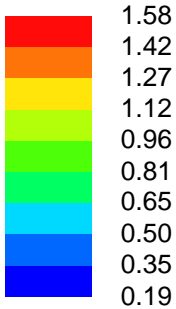
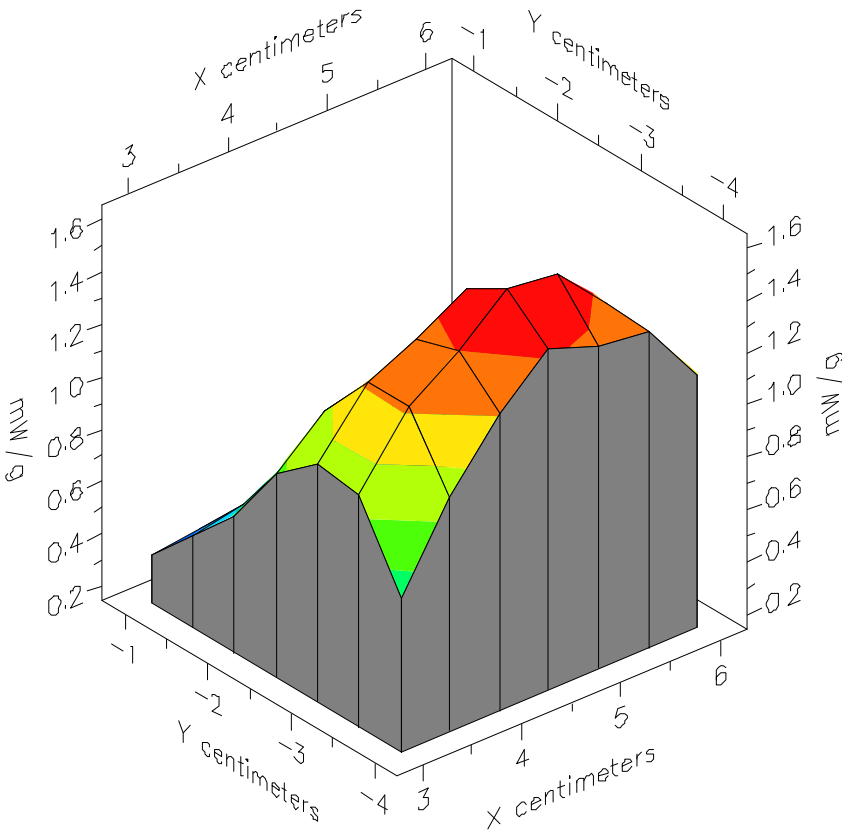


File : 01122708_ZOOM

Start : 27-Dec-101 04:43:03 pm End : 27-Dec-101 04:49:39 pm

HYUNDAI/HWP-230/1;1908.75MHz;W;Helical/Internal;

Flat/E Field;ZOOM/SAR;PCTEST/E Field/0 DegreesMuscle/54.200/1.450



File : 01122708_ZOOM

Start : 27-Dec-101 04:43:03 pm End : 27-Dec-101 04:49:39 pm

HYUNDAI/HWP-230/1;1908.75MHz;W;Helical/Internal;

Flat/E Field;ZOOM/SAR;PCTEST/E Field/0 DegreesMuscle/54.200/1.450

