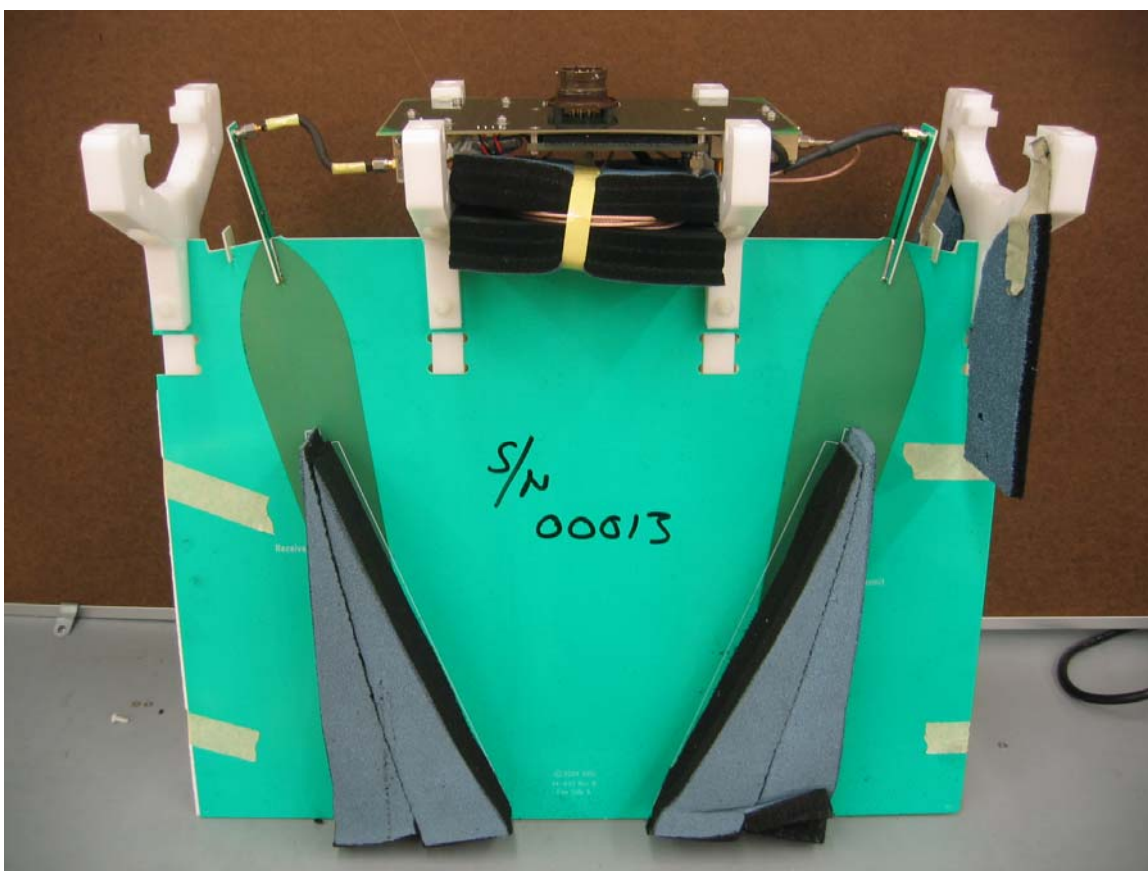
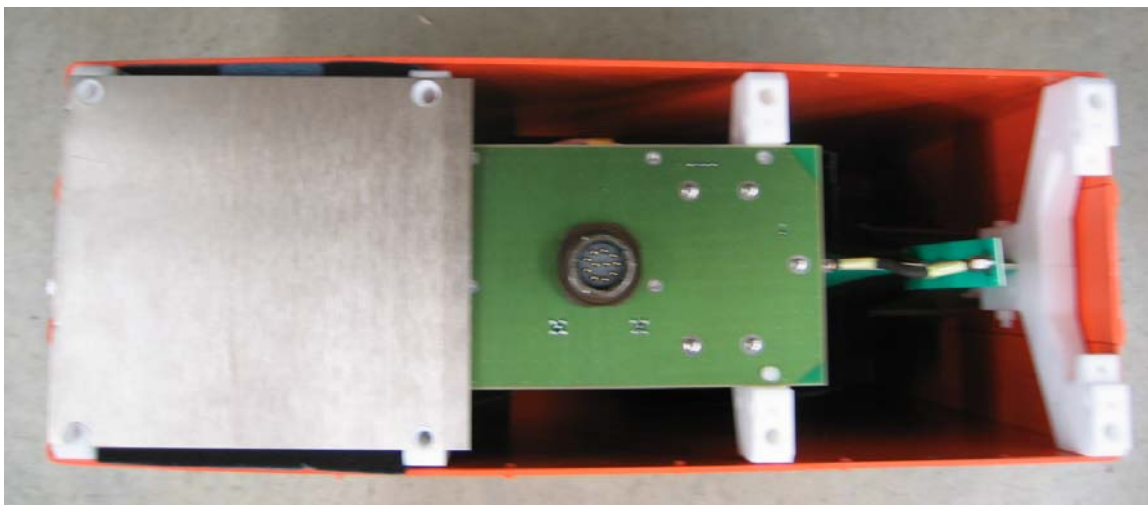


QF74105 ANTENNA INTERNAL PHOTOS



REMOVED FROM CASE
FAN PCB PARTLY VISIBLE

QF74105 ANTENNA INTERNAL PHOTOS

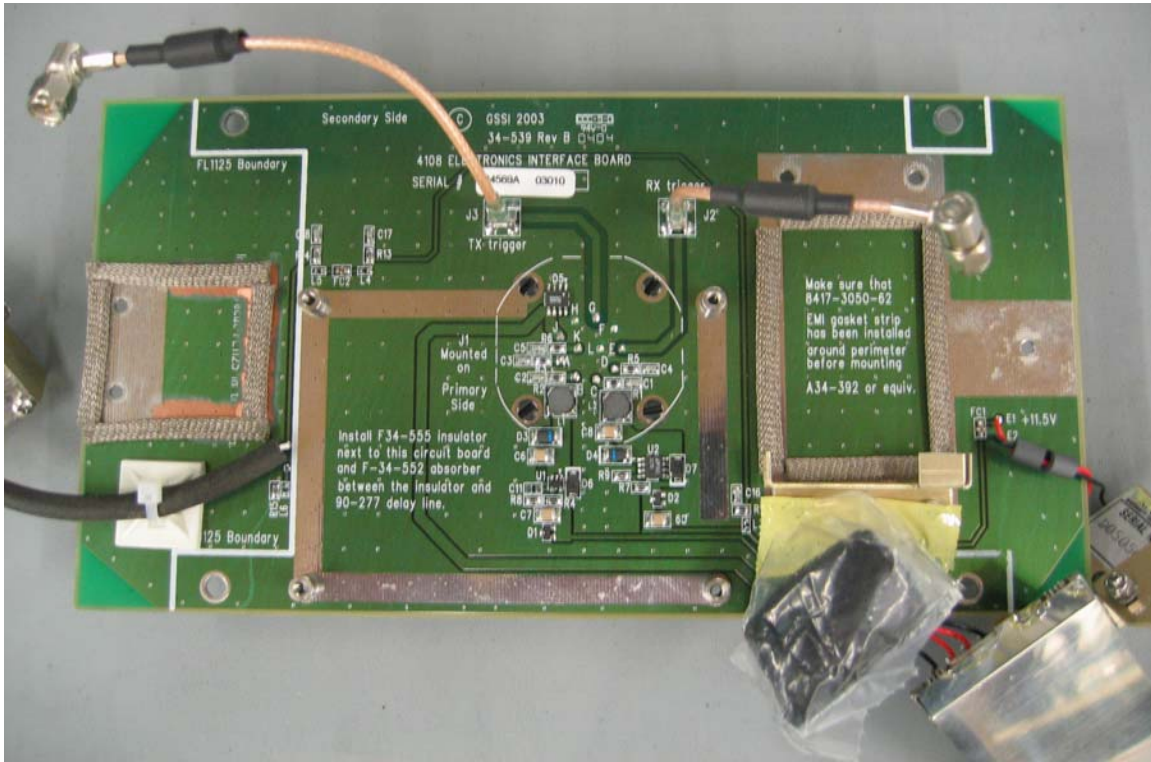


PC BOARDS SHOWN ABOVE:

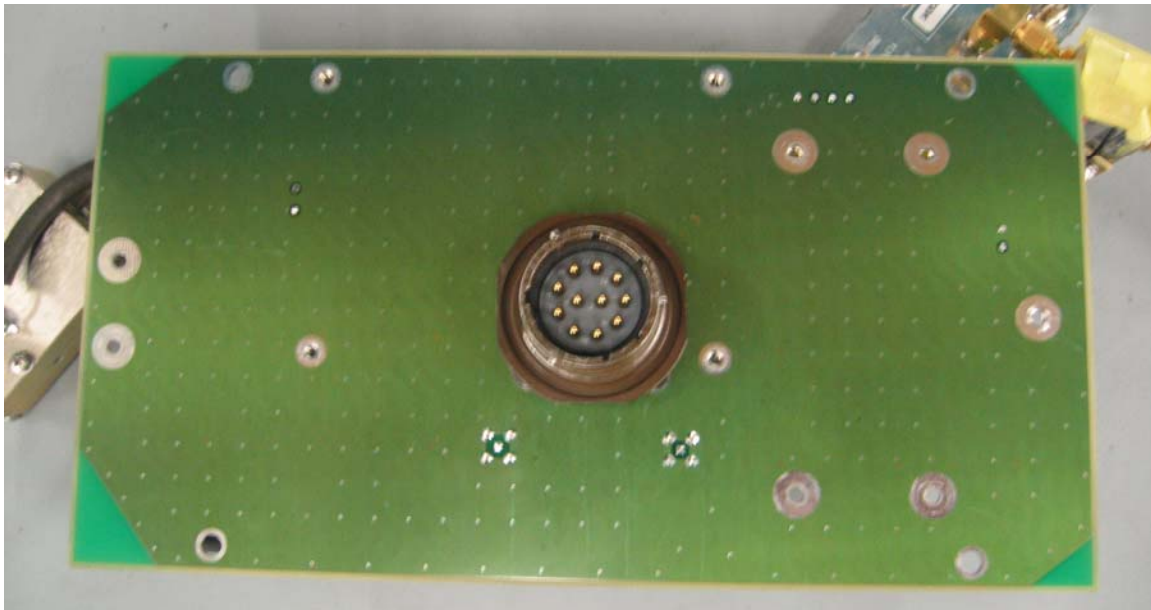
1. ELECTRONICS INTERFACE BOARD (MAIN BOARD ON BOTTOM)
2. DELAY LINE PCB (CENTER)
3. MONOCYCLE GENERATOR (MOUNTED ON LEFT SIDE)
4. RF AMPLIFIER (MOUNTED ON RIGHT SIDE)
5. RECEIVER SAMPLER (SECOND MODULE MOUNTED FROM RIGHT)

QF74105 ANTENNA INTERNAL PHOTOS

1. ELECTRONICS INTERFACE BOARD



Back



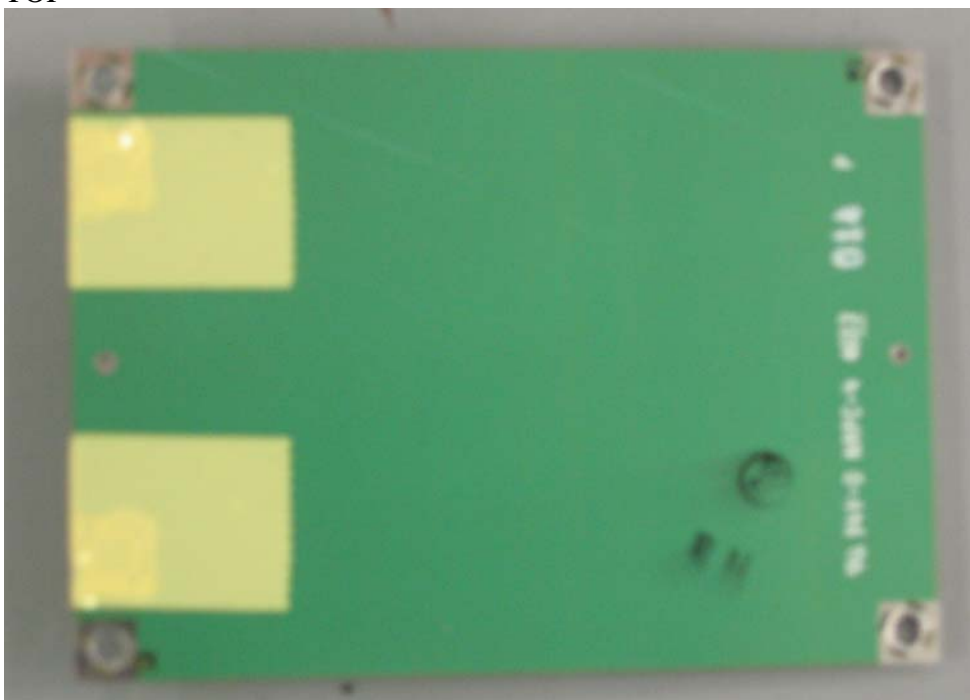
Top

QF74105 ANTENNA INTERNAL PHOTOS

2. DELAY LINE PC BOARD



TOP



BACK

QF74105 ANTENNA INTERNAL PHOTOS

3. MONOCYCLE GENERATOR



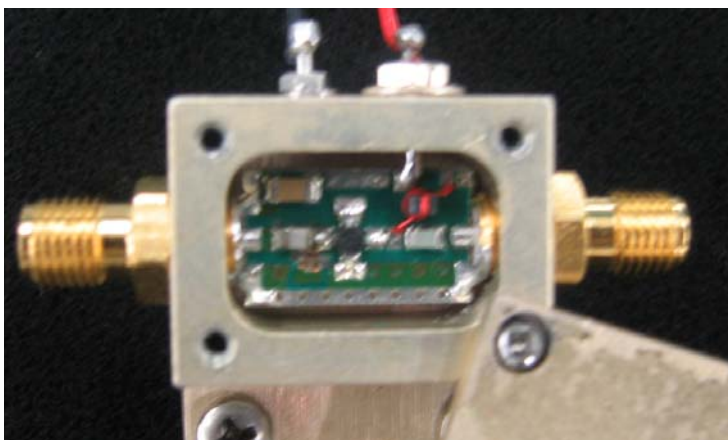
Back



Top

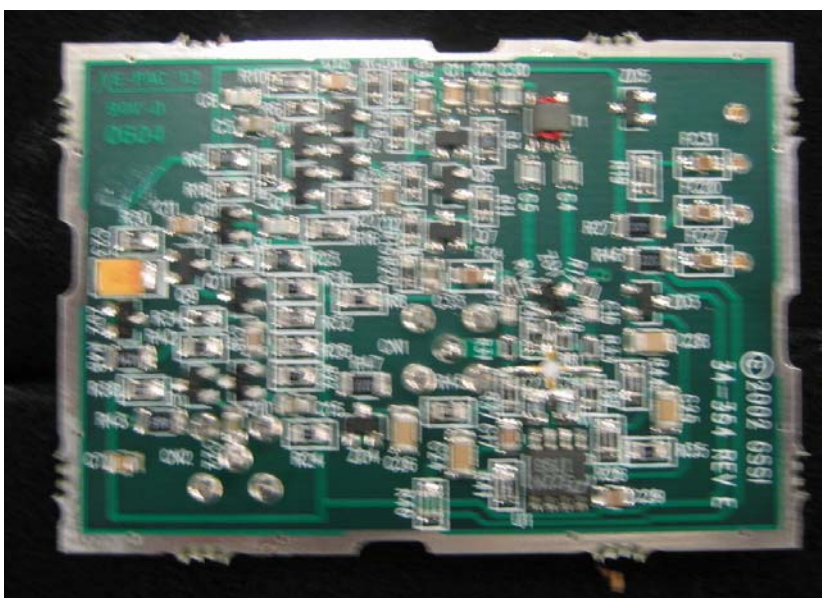
4. RF AMPLIFIER

QF74105 ANTENNA INTERNAL PHOTOS



TOP

5. RECEIVER SAMPLER



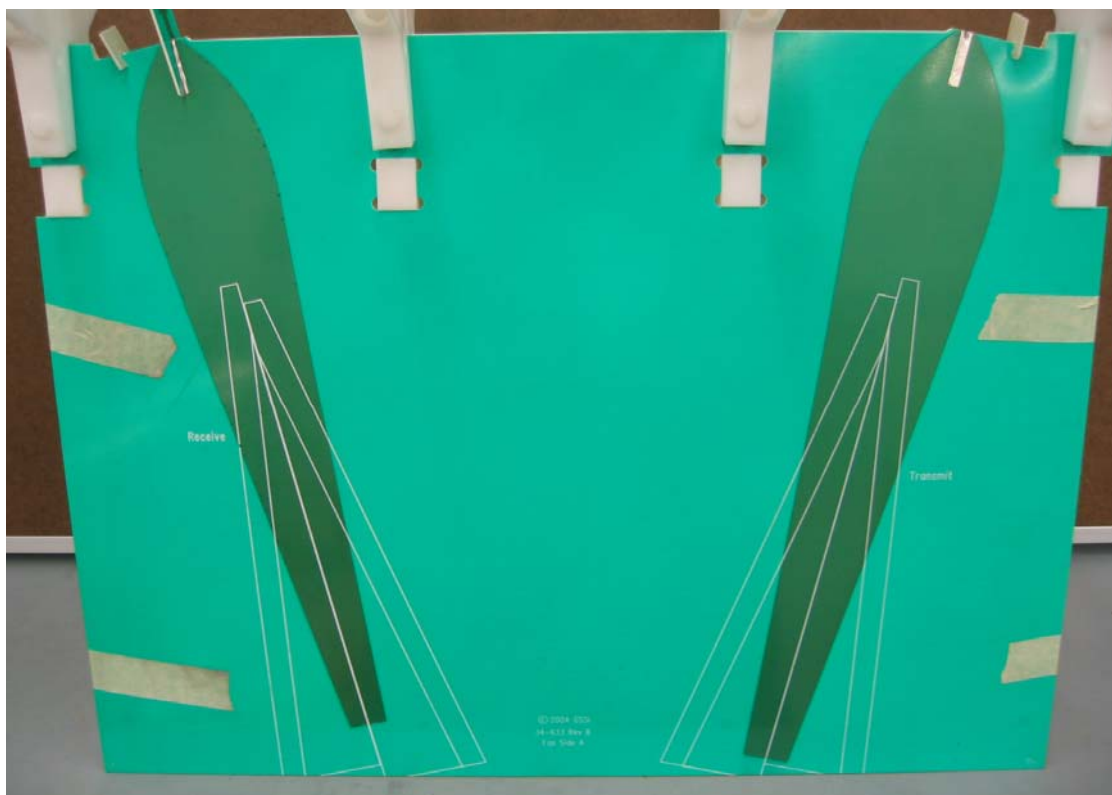
TOP

QF74105 ANTENNA INTERNAL PHOTOS



BOTTOM

6. FAN PC BOARD



QF74105 ANTENNA INTERNAL PHOTOS

7. BACK SIDE OF FAN BOARD

