

1. Antenna Description:

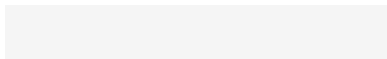
Antenna type	External antenna
Model	F7MINI SE
Frequency range	2400-2500MHz
Manufacturer	SHANTOU CITY UDIRC TECHNOLOGY COMPANY LIMITED
ANT Peak Gain	2.05 dBi

2. Antenna Photo:

Length: 30.37mm
Width: 2.92mm



Width: 4.81mm



3. Test Equipment & Conditions

3.1 Test instrument

VSWR is tested using Agilent E5071B connected to a hand mechanism, and the status is free space.

3.2 Test environment and methods

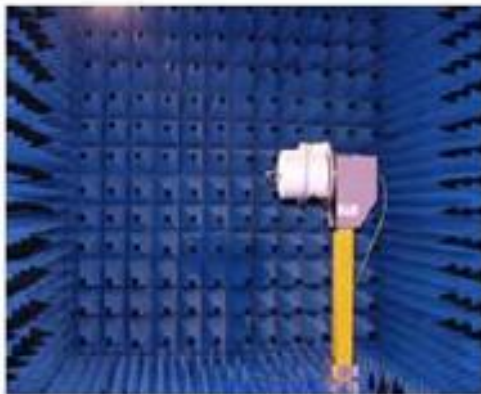
Dark room specifications: ETS-743

TD-SCDMA test equipment: StarPoint SP6010/Agilent 8960

LTE-TDD/FDD-SCDMA test equipment: StarPoint SP8011/CMW500

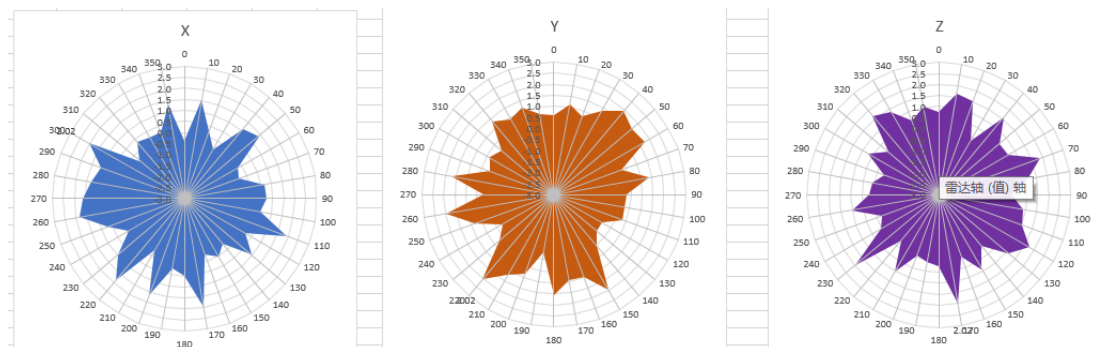
WCDMA/GSM/CDMA test equipment: Agilent 8960

Passive efficiency testing equipment: Agilent Technologies E5071B

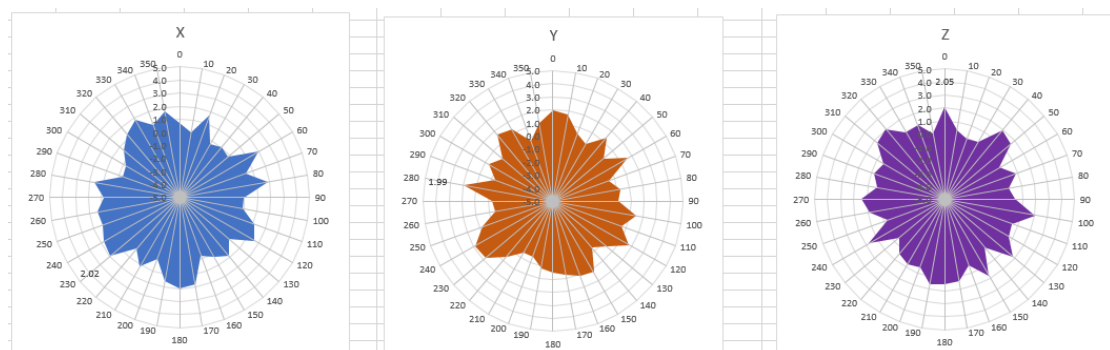


4 . Antenna Radiation Pattern

5745MHz



5785MHz



5825MHz

